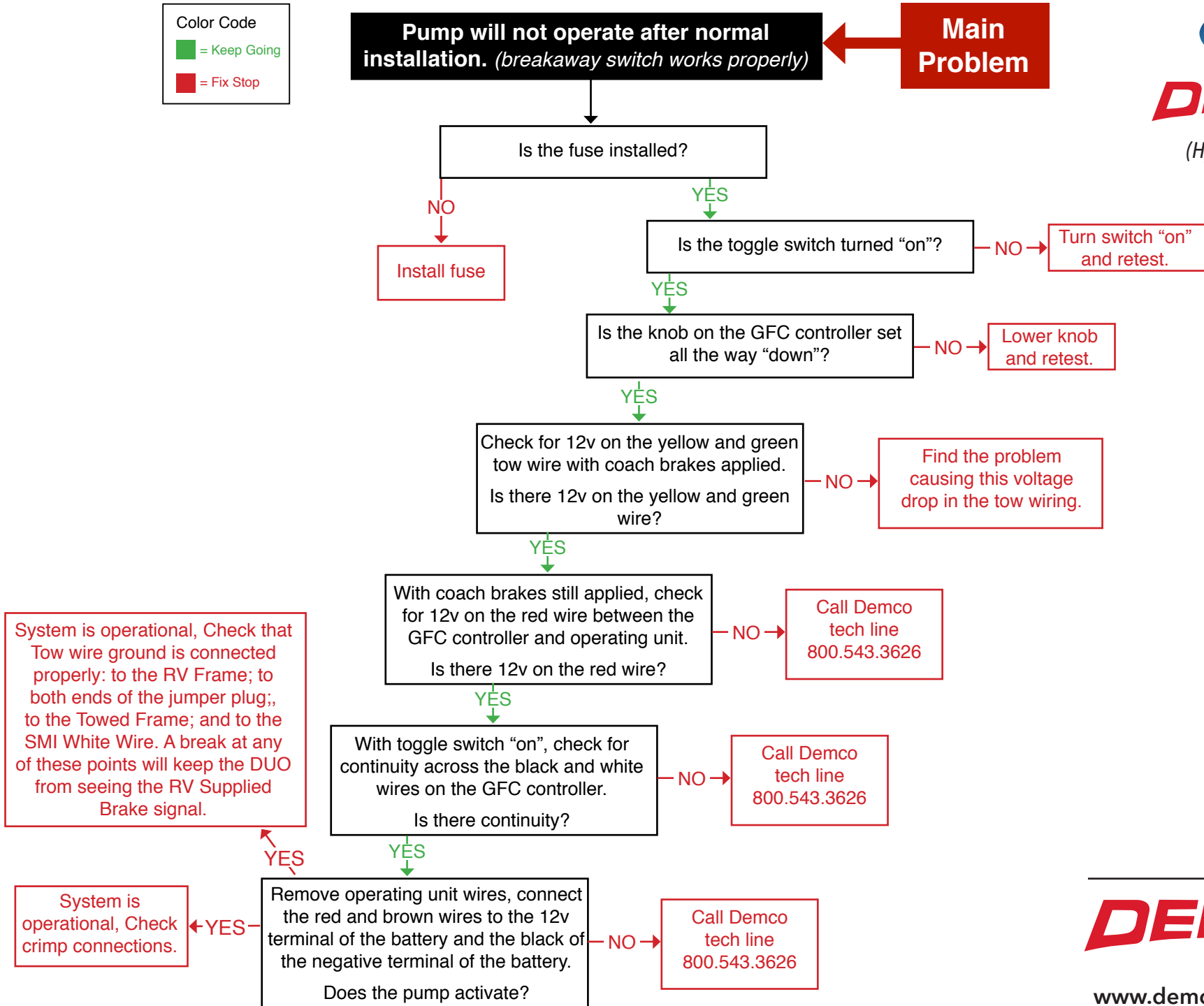
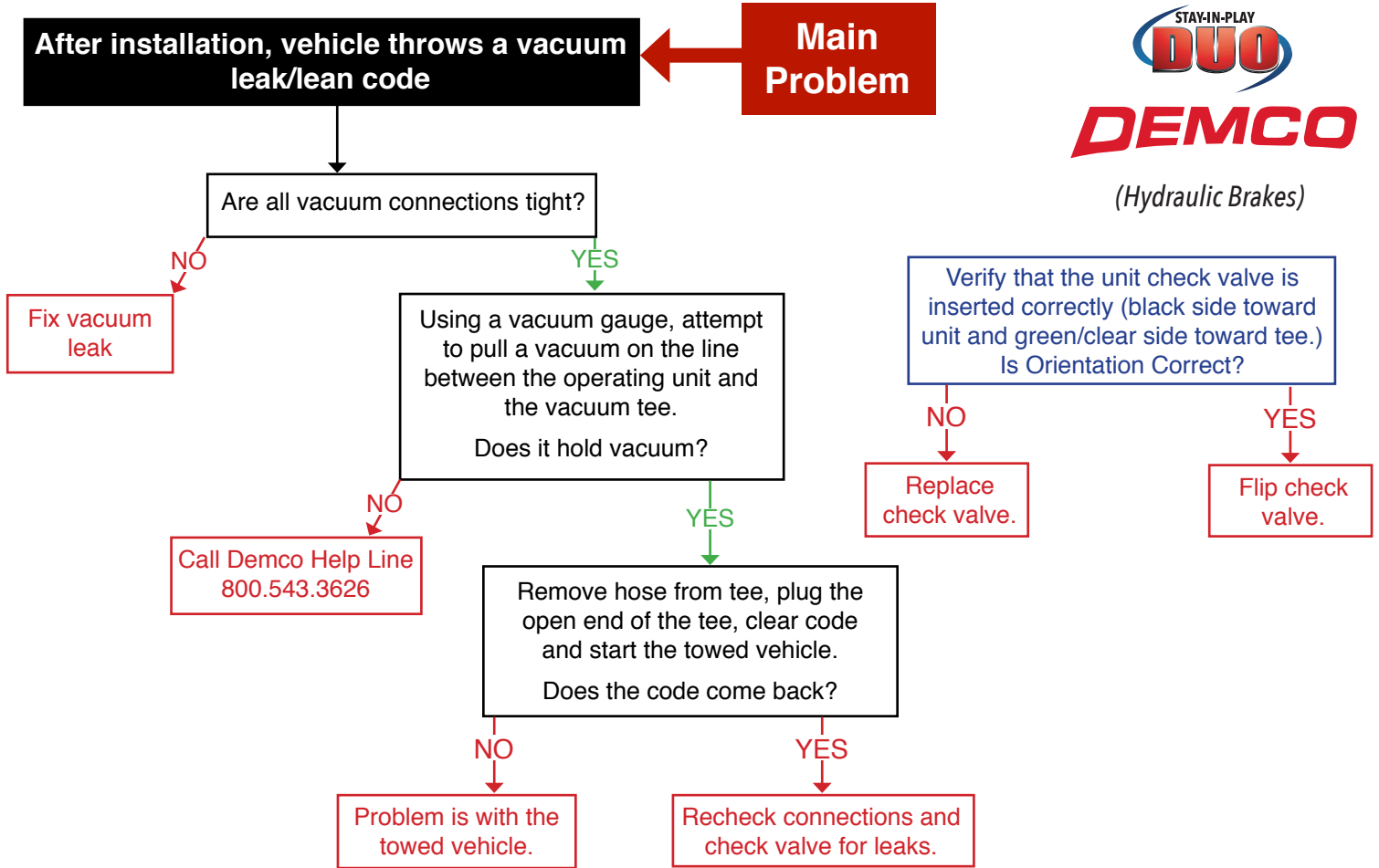


Color Code  
■ = Keep Going  
■ = Fix Stop

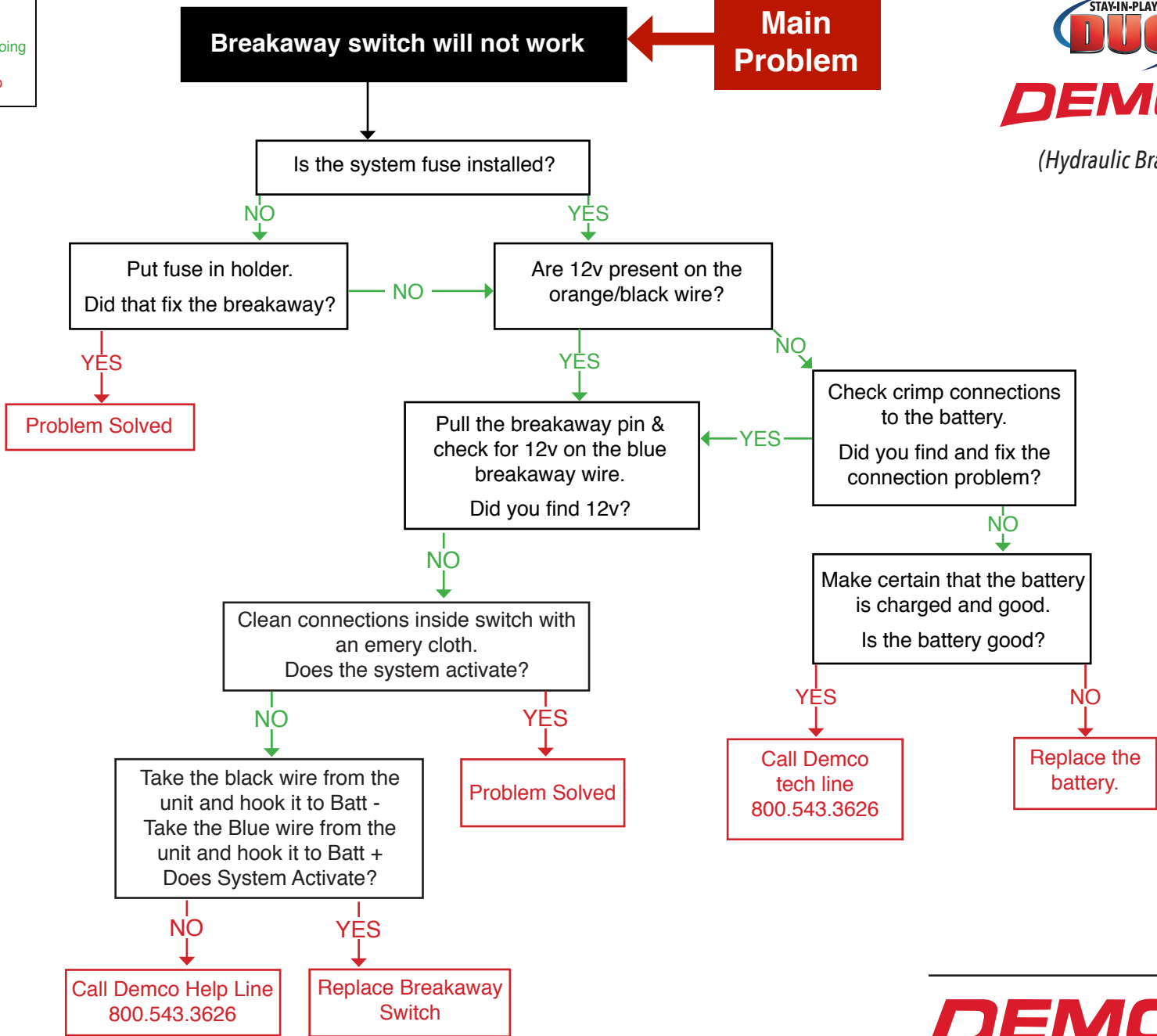


Color Code  
 ■ = Keep Going  
 ■ = Fix Stop

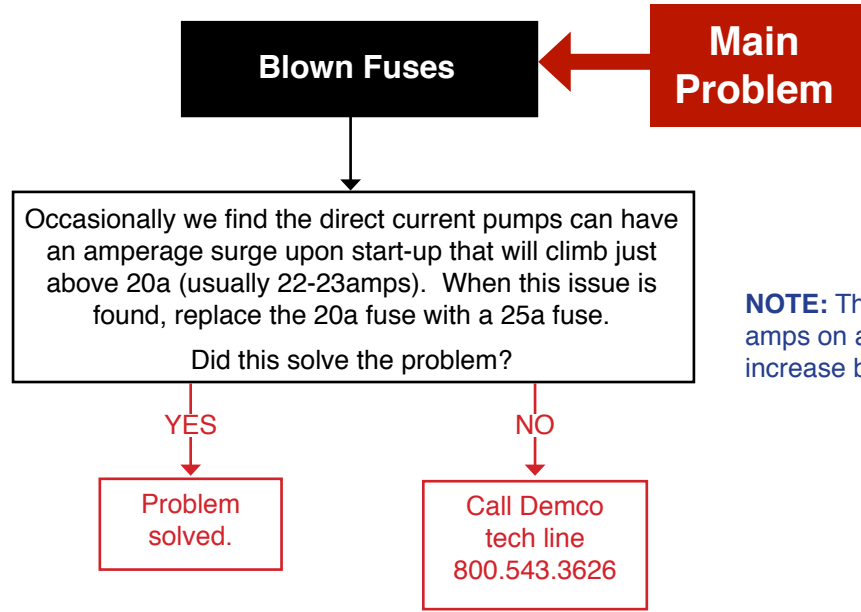


Color Code  
 ■ = Keep Going  
 ■ = Fix Stop

**Main Problem**



Color Code  
■ = Keep Going  
■ = Fix Stop



*(Hydraulic Brakes)*

**NOTE:** The compressors run draw drops to 8-10 amps on average. Also, low battery voltage can increase both startup and run amp draw.

Color Code

■ = Keep Going

■ = Fix Stop

**NOTE:** The brake/turn signal wires receive both the constant 12v from the RV brakes and a pulsing 12v when the RV turn signals are active. While in tow, when the RV brakes are applied and the RV's left turn signal is on at the same time, the GFC (G-Force Controller) will see the constant voltage from the right brake light and activate normally. However, if the GFC sees the 12v pulsing signal and subsequently begins to pulse on and off with the turn signal, reset GFC according to the initial set-up instructions found in step 12 of the installation manual.

Remember, the DUO should never activate with the brake signal while sitting stationary on level ground.

Did this solve the problem?

