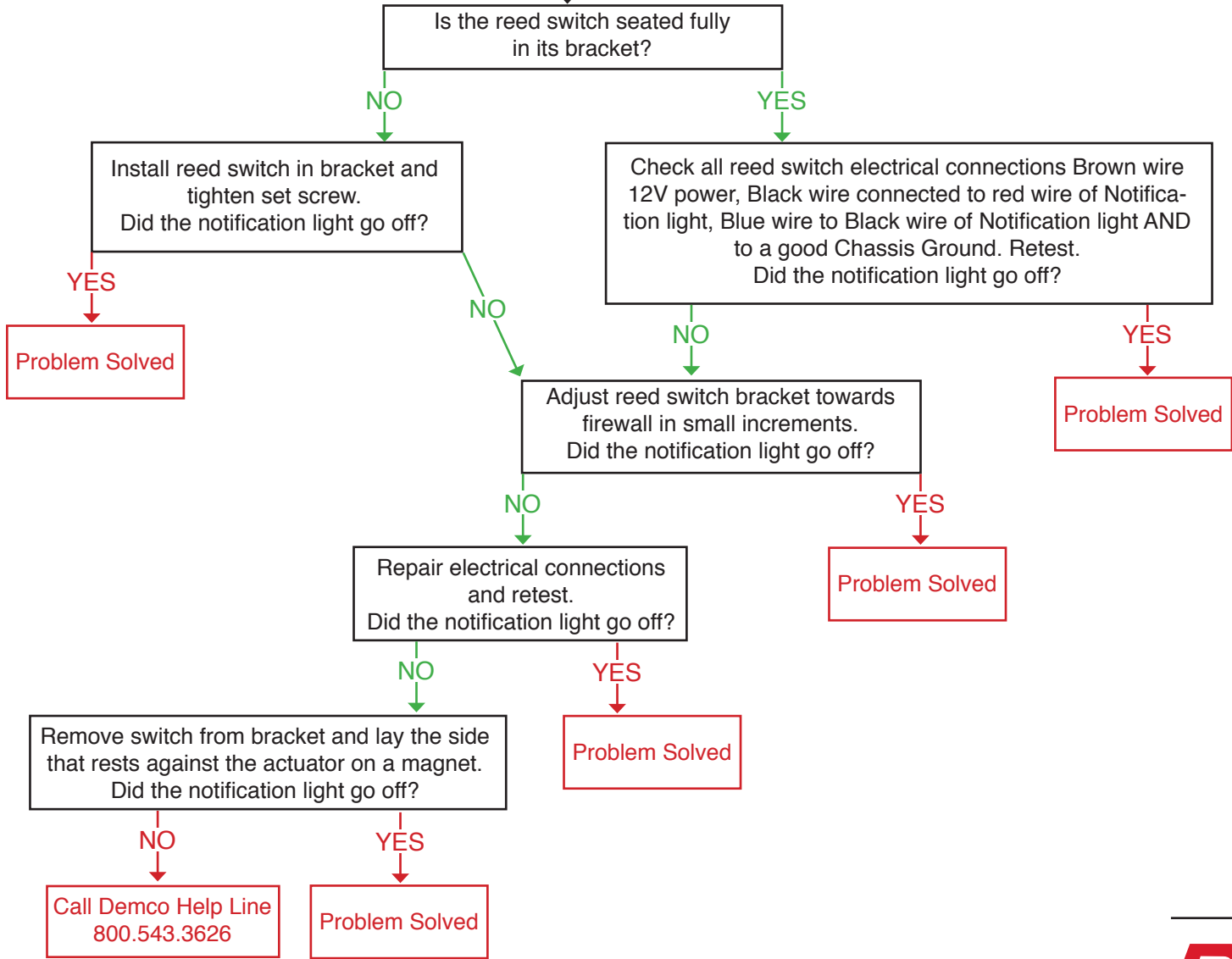


Color Code
■ = Keep Going
■ = Fix Stop

The Coach Notification Light stays on after install.

Main Problem



DEMCO

800.543.3626
 www.demco-products.com

Color Code
■ = Keep Going
■ = Fix Stop

The AFO Air cylinder doesn't actuate when coach brakes are applied.

Main Problem



Confirm the cable to the cylinder is not broken or does not have too much slack by pulling the cylinder towards the seat. Cylinder should move back no more than 1/4" before cable tension is present.

VACUUM BRAKE BOOSTER PROCEDURE
 Apply coach brakes check for air coming out of the exhaust port on the AFO operating unit. Is air present?

NO

YES

Remove airline from fitting at back of coach. Is air present when coach brakes are applied?

Remove air line from the push lock fitting on the end of the air cylinder. Is air present when coach brake is applied?

NO

YES

NO

YES

Carefully removed airline between AFO tank and relay valve. Is there any air present?

Check filter at back side of towed connector for restriction. Is the filter restricted?

Call Demco Help Line
800.543.3626

NO

YES

NO

YES

Call Demco Help Line
800.543.3626

Replace filter.

Check for damaged airline between towed connector and AFO operating unit. Replace airline.

Check for damage or kink(s) in airline between the AFO relay valve and rear coach connection. Any damage found?

Check for damaged or kinked airline between towed connector and AFO operating unit. Replace airline.

NO

Call Demco Help Line
800.543.3626

Color Code
■ = Keep Going
■ = Fix Stop

The AFO Air cylinder doesn't actuate when coach brakes are applied.

Main Problem



Confirm the cable to the cylinder is not broken or does not have too much slack by pulling the cylinder towards the seat. Cylinder should move back no more than 1/4" before cable tension is present.

HYDRO BOOST SET UP
 Remove Air IN airline. Is air present when coach brakes are applied?

NO

YES

Remove air line from fitting at back of coach. Is air present when coach brake is applied?

Remove air line from the push lock fitting on the end of the air cylinder. Is air present when coach brake is applied?

NO

YES

NO

YES

Carefully removed airline between AFO tank and relay valve. Is there any air present?

Check filter at back side of towed connector for restriction. Is the filter restricted?

Check for damaged airline between AFO operating unit and air cylinder. Replace airline and retest.

Call Demco Help Line
800.543.3626

NO

YES

NO

YES

Call Demco Help Line
800.543.3626

Replace filter.

Check for damage or kink(s) in airline between AFO relay valve and rear coach connection. Any damage found?

Check for damaged or kinked airline between towed connector and AFO operating unit. Replace airline.

NO

Call Demco Help Line
800.543.3626

DEMCO

800.543.3626
 www.demco-products.com

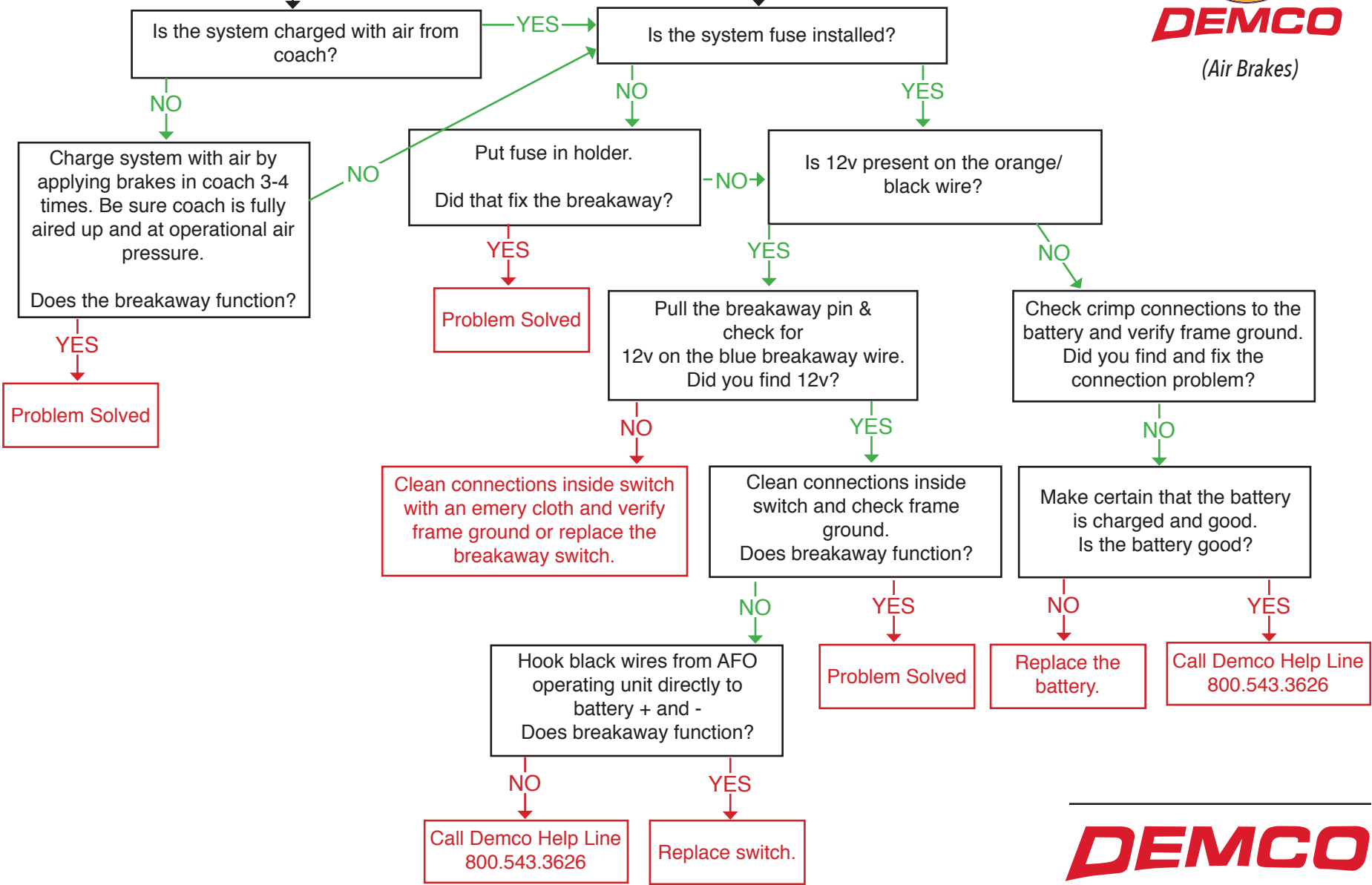
Color Code
■ = Keep Going
■ = Fix Stop

Breakaway switch will not work

Main Problem



DEMCO
(Air Brakes)



DEMCO

800.543.3626
www.demco-products.com

Color Code
 ■ = Keep Going
 ■ = Fix Stop

After installation, vehicle throws a vacuum leak/lean code

Main Problem

Are all vacuum connections tight?

NO
 Fix vacuum leak

YES
 Using a vacuum gauge, attempt to pull a vacuum on the line between the operating unit and the vacuum tee.
 Does it hold vacuum?

NO
 Locate the unit side check valve by following the vacuum line from the tee connection to the operating unit. Verify that the unit check valve is installed and is inserted correctly (black side toward unit and green/clear side toward tee).
 Is check valve installed and inserted correctly?

YES
 Remove hose from tee, plug the open end of the tee, clear code and start the towed vehicle.
 Does the code come back?

NO
 Install a check valve or flip the check valve

YES
 Call Demco Help Line 800.543.3626

NO
 Problem is with the towed vehicle.



Color Code
■ = Keep Going
■ = Fix Stop

After installing AFO the brakes in towed activate when Emergency brake of coach is released

Main Problem



Chock the wheels of the coach, disconnect the metered signal, and check for metered signal with Emergency brake released. Is the line connection a metered signal or a constant signal?

METERED

Call Demco Help Line
800.543.3626

CONSTANT

The connection made is not a metered signal, Repair and move to a metered signal. Retest

DEMCO

800.543.3626
www.demco-products.com