

Demco manufacturing
Dethmers Manufacturing Company

DOING OUR BEST TO PROVIDE YOU THE BEST

“QUICK TACH”

SIDE MOUNT TANKS & UNDERCARRIAGES

FOR STANDARD TWO WHEEL DRIVE TRACTORS

ASSEMBLY
CALIBRATION
OPERATION
REPLACEMENT PARTS

READ complete
manual **CAREFULLY**
BEFORE attempting
operation.



DEMCO • Dethmers Mfg. Co. • 4010 320th St. • P.O. Box 189 • Boyden, IA 51234
PH: (712) 725-2311 or (712) 725-2302 • Toll Free: 1-800-543-3626 • FAX: 1-800-845-6420
www.demco-products.com

Thank you for purchasing a Demco iQuick Tachî side mounts. We feel you have made a wise choice and hope you are completely satisfied with your iQuick Tachî side mounts. If you have any questions regarding the applications of certain solutions or chemicals, contact your chemical supplier and follow chemical manufacturer recommendations as well as all licensing and use restrictions or regulations.



WARNING: TO AVOID PERSONAL INJURY OR PROPERTY DAMAGE, OBSERVE FOLLOWING INSTRUCTIONS:

Chemicals are dangerous. Know exactly what you're going to do and what is going to happen before attempting to work with these products. Improper selection or use can injure people, animals, plants and soil.

Always wear protective clothing such as coveralls, goggles and gloves when working with chemicals or sprayer.

Be sure to dispose of all unused chemicals or solutions in a proper and ecologically sound manner.

GENERAL INFORMATION

1. Unless otherwise specified, high-strength (grade5) (3 radial-line head markings) hex head bolts are used throughout assembly of this sprayer.
2. Whenever terms "**LEFT**" and "**RIGHT**" are used in this manual it means from a position behind tractor and facing forward.
3. When placing a parts order, refer to this manual for proper part numbers and place order by **PART NO. and DESCRIPTION.**

Table of Contents

General information	2
Bolt Torque	3
Carrier Brackets Parts List and Breakdown	4
iQuick-Tachî Sidemount Tanks Parts List and Breakdown	5-6
Carrier and Undercarriage Assembly Instructions	7
Saddle Tanks Assembly Instructions	8
Optional Jack, Wheels, and Step Assembly Instructions	9
Equipment Checklist	10

BOLT TORQUE

Checking Bolt Torque

Table shown below gives correct torque values for various bolts and capscrews. Tighten all bolts to torques specified in chart unless otherwise noted. Check tightness of bolts periodically, using bolt chart as a guide. Replace hardware with same grade bolt.

NOTE: Unless otherwise specified, high-strength Grade 5 hex head bolts are used throughout assembly of this piece of equipment.



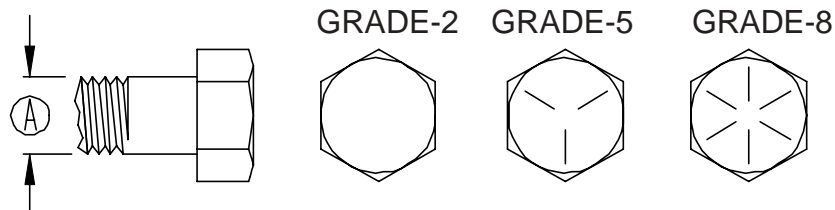
Torque Specifications

Bolt Torque *

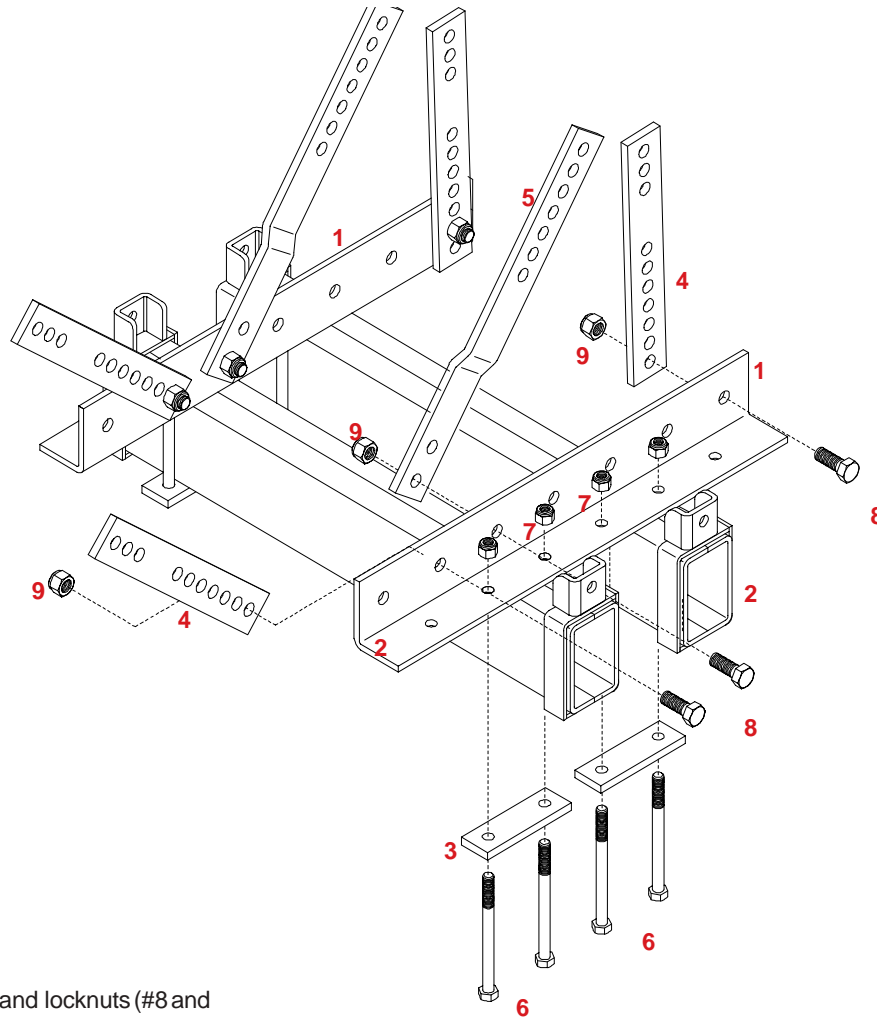
"A"	GRADE 2		GRADE 5		GRADE 8	
	lb-ft	(N.m)	lb-ft	(N.m)	lb-ft	(N.m)
1/4"	6	(8)	9	(12)	12	(16)
5/16"	10	(13)	18	(25)	25	(35)
3/8"	20	(27)	30	(40)	45	(60)
7/16"	30	(40)	50	(70)	80	(110)
1/2"	45	(60)	75	(100)	115	(155)
9/16"	70	(95)	115	(155)	165	(220)
5/8"	95	(130)	150	(200)	225	(300)
3/4"	165	(225)	290	(390)	400	(540)
7/8"	170	(230)	420	(570)	650	(880)
1"	225	(300)	630	(850)	970	(1310)

Torque figures indicated above are valid for non-greased or non-oiled threads and heads unless otherwise specified. Therefore, do not grease or oil bolts or capscrews unless otherwise specified in this manual. When using locking elements, increase torque values by 5%.

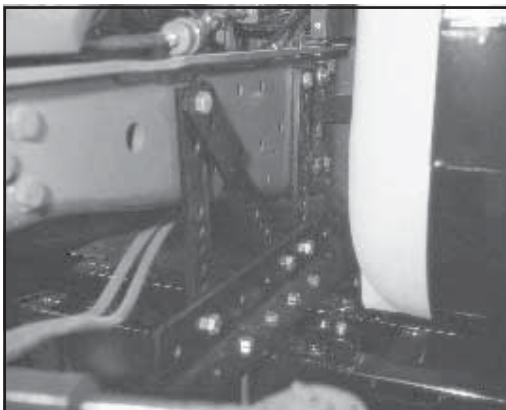
* Torque value for bolts and capscrews are identified by their head markings.



CARRIER BRACKETS PARTS BREAKDOWN



NOTE: 3/4" x 2" grade 5 bolts and locknuts (#8 and #9) used to attach hanger brackets to the horizontal angle come with the mainframe bolt bag.



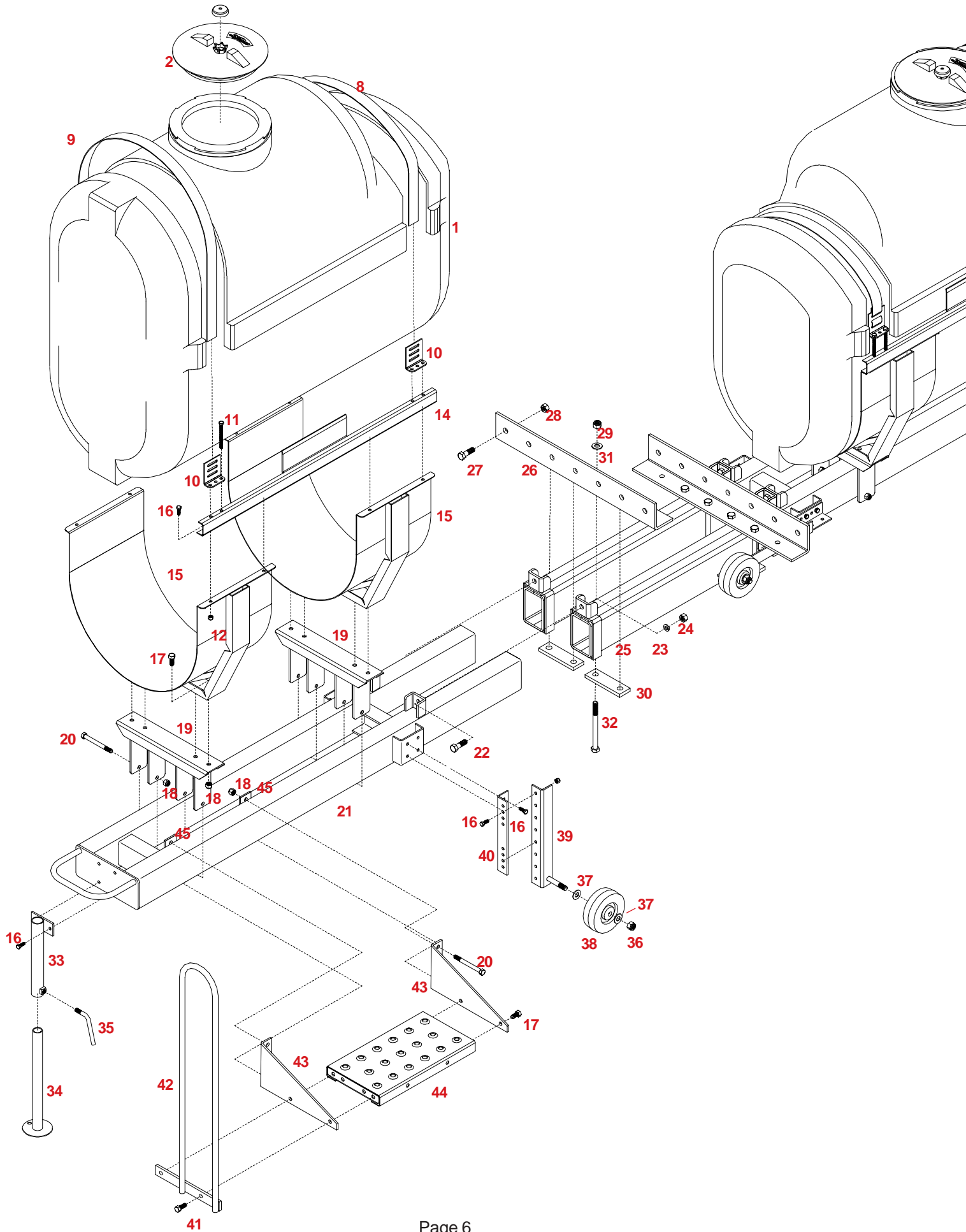
CARRIER BRACKETS PARTS LIST

REF. NO.	PART NO.	QTY.	DESCRIPTION
1.	01761-35	2	Mounting Angles
2.	01755-35	2	Undercarriage Tubes
3.	05106-35	4	Undercarriage Back-Up Plate
4.	01759-35	4	16" Long Hanger Bracket
5.	00586-35	8	22" Long Offset Sway Brace
6.	03729	8	5/8"-11 UNC x 8" Hex Head Bolt (Gr 5)
7.	03730	8	5/8"-11 UNC Stover Locknut (Gr.B)
8.	01235	6	3/4"-10 UNC x 2" Hex Head Bolt (Gr 5)
9.	02961	6	3/4"-10 UNC Nylon Insert Locknut
-	00965	6	5/8"-18UNF x 2" Bolt (gr. 5)
-	00073	6	5/8"-18UNF Hex Nut
-	00248	6	5/8" Lockwasher
-	01338	6	1/2"-11UNC x 4-1/2" Bolt (gr. 5)
-	02178	6	1/2"-11UNC Nylon Insert Locknut

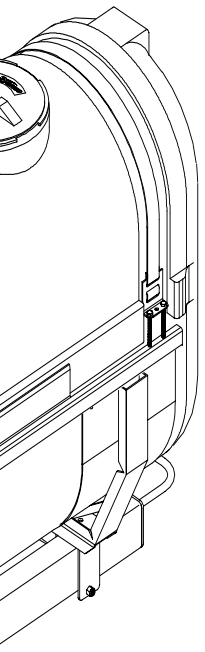
Please order replacement parts by **PART NO.** and **DESCRIPTION.**

Each tractor style will possibly require the brackets to be mounted differently.

"QUICK TACH" SIDE MOUNT TANK PARTS BREAKDOWN

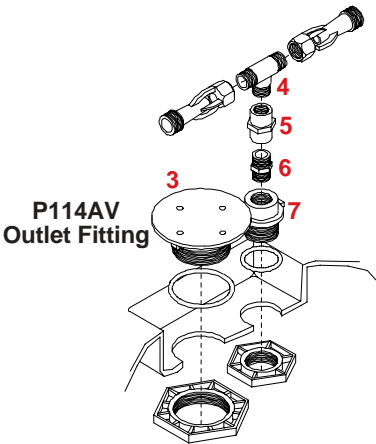


"QUICK TACH" SIDE MOUNT TANK PARTS LIST



REF. NO.	PART NO.	QTY.	DESCRIPTION
1.	PA250 24C	2	250 gallon Tank (includes lid, agitation and outlet fittings)
-	PA200 24C	2	200 gallon Tank (includes lid, agitation and outlet fittings)
2.	09319	2	8" diameter lid w/external threads
-	D3371PSA	2	Double Jet Agitation for poly tank
-	P114AV	2	1-1/4" Tank Anti-Vortex Outlet Fitting
-	D3371PSA	-	Tank Agitation Assembly (Includes two 5044 1)
4.	R1212	1	Agitation Tee Fitting
5.	FC1200	1	1/2" FPT Coupling
6.	BM1200	1	1/2" MPT Close Nipple (GFP)
7.	PO12DA	1	Agitation Center Portion
-	5044 1	-	Double Jet Agitation Wand Assembly (included w/D3371PSA)
8.	05367	2	1-3/4" Short Polyester Tank Band (56")
9.	05367	2	1-3/4" Long Polyester Tank Band (74")
10.	05785-95	8	Small Strap Anchor
11.	01885	16	3/8"-16 UNC x 5" Full Thread Bolt
12.	00061	20	3/8"-16 UNC Hex Nut
13.	00060	20	3/8" Spring Lockwasher
14.	10867-35	4	50-1/2" Long Spreader Bar for 250 gallon tank
-	10866-35	4	44" Long Spreader Bar for 200 gallon tank
15.	01678-35	4	24" Saddle
16.	00907	16	3/8"-16 UNC x 1" Hex Head Bolt (gr. 5)
17.	04795	8	1/2"-13 UNC x 1" Hex Head Bolt (gr. 5)
18.	02178	16	1/2"-13 UNC Nylon Insert Locknut
19.	01758-35	4	Saddle Mount
20.	01338	8	1/2"-13 UNC x 4-1/2" Hex Head Bolt (gr. 5)
21.	01754-35	2	Side Mount Frame
22.	00965	4	5/8"-18 UNF x 2" Hex Head Bolt (gr. 5)
23.	00248	4	5/8" Lockwasher
24.	00073	4	5/8"-18 UNF Hex Nut
25.	01755-35	2	36" Long Undercarriage Tubes
26.	01761-35	2	Frame Mount Horizontal Angle
27.	01235	6	3/4"-10UNC x 2" Hex Head Bolt (gr. 5)
28.	02961	6	3/4"-10UNC Nylon Insert Locknut
29.	03730	8	5/8"-11 UNC Stover Locknut (Gr B)
30.	05106-35	4	Undercarriage Back-Up Plate
31.	00477	8	5/8" Flatwasher
32.	03729	8	5/8"-11UNC x 8" Hex Head Bolt (gr.5)
QTWL		1	Optional Wheels and Jackstand (includes items 20-47 below)
12.	00061	20	3/8"-16 UNC Hex Nut
13.	00060	20	3/8" Spring Lockwasher
16.	00907	20	3/8"-16 UNC x 1 Hex Head Bolt (gr. 5)
33.	01757-35	2	Top Jackstand Tube
34.	01756-35	2	Bottom Jackstand Tube
35.	00161-95	2	Lock Handle
36.	02587	4	5/8"-11 UNC Nylon Insert Locknut
37.	00496	8	5/8" x 16 gauge Machine Washer
38.	04445	4	6" x 2" Soft Tread Rubber Wheel
39.	01764-35	2	Right Lower Axle Bracket (shown)
-	01770-35	2	Left Lower Axle Bracket (not shown)
40.	01763-35	4	Upper Wheel Bracket
QTST		1	Optional Step Platform (includes items 24-52 below)
17.	04795	2	1/2"-13 UNC x 1" Hex Head Bolt (gr. 5)
18.	02178	8	1/2"-13 UNC Nylon Insert Locknut
20.	01338	4	1/2"-13 UNC x 4-1/2" Hex Head Bolt (gr. 5)
41.	00967	2	1/2"-13 UNC x 1-1/4" Hex Head Bolt (gr. 5)
42.	01767-35	1	Handrail
43.	01765-35	2	Platform Mounting Bracket
44.	01768-35	1	Step Platform
45.	01766-35	4	Back-Up Plate

**D3371PSA
Tank Agitation Assembly**



Please order replacement parts by **PART NUMBER** and **DESCRIPTION**.

MOUNTING THE CARRIER & UNDERCARRIAGE

1. Park the tractor on a firm, level area, preferably a wide concrete pad. Determine approximate tank positioning for your tractor, keeping in mind such factors as clearance to front and rear of tanks on both sides, especially near wheels. Keep in mind the necessity of having the mounting brackets level on both sides, and clear areas on both sides of the frame to install the mounting brackets. It is desirable to mount the tanks as high as possible to give best ground clearance.

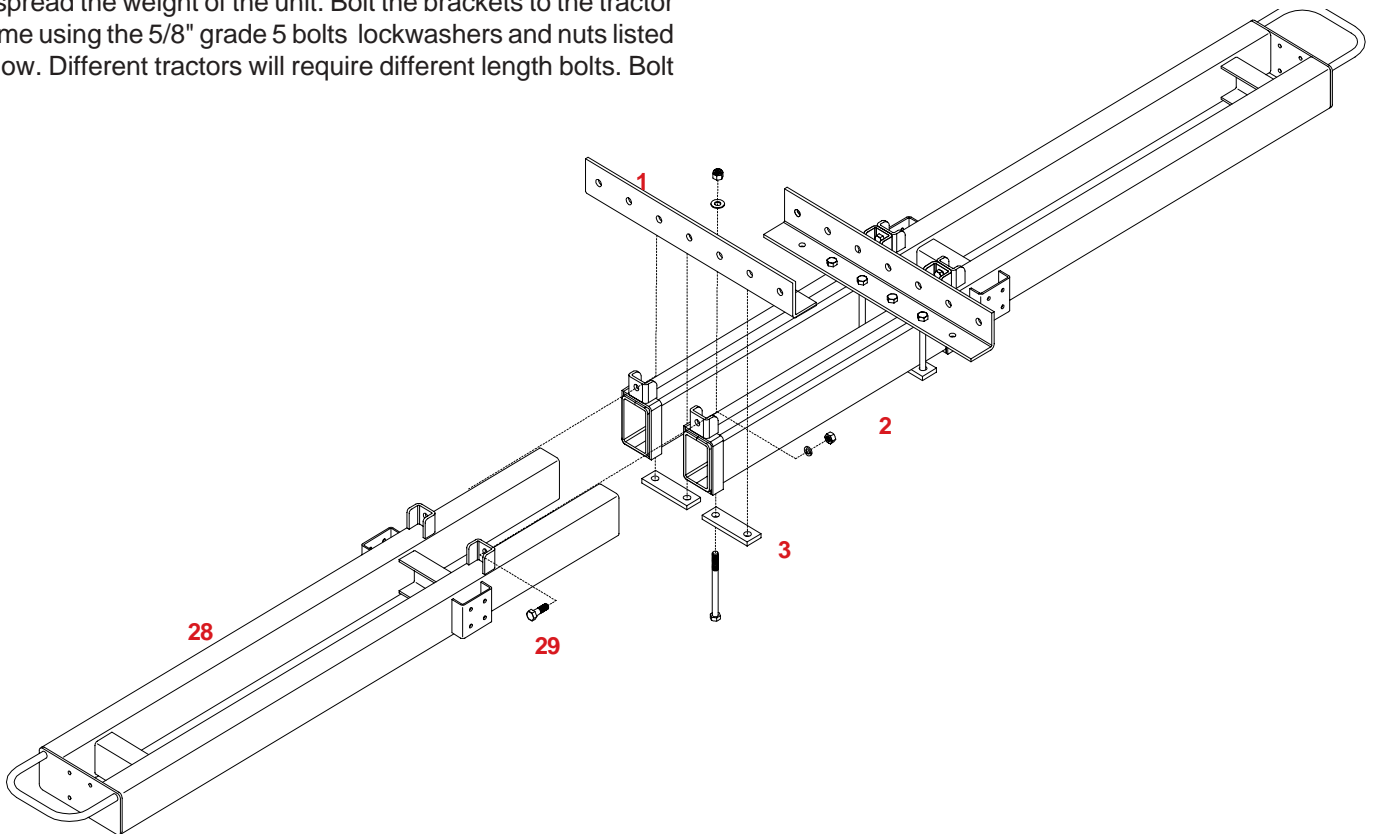
2. It is preferable to use existing holes in the tractor frame when fastening the mounting brackets to the frame. If any holes are to be drilled, check with your tractor dealer for permissible locations and sizes. The horizontal angle (#1) must be hung from the frame by using the two hanger braces (#4 or #5). Use the sway brace (#6) to prevent the unit from swaying back and forth under the tractor. Make sure the horizontal angle is horizontal to the ground and as high as possible, with clearance for the undercarriage tubes under the tractor. Use as many different holes in the frame as possible to spread the weight of the unit. Bolt the brackets to the tractor frame using the 5/8" grade 5 bolts lockwashers and nuts listed below. Different tractors will require different length bolts. Bolt

the bottom of the sway brace and hanger brackets to the horizontal angle with 3/4" x 2" grade 5 bolts, and locknuts.

3. Slide the two undercarriage tubes (#2) under the tractor, with the welded-on tabs pointing up. Fasten the undercarriage tubes to the bottom of the horizontal angle (#1) using two 5/8" x 8" bolts, back-up plate (#3), two flatwashers and locknuts (for each undercarriage tube) and attach both undercarriage tubes using the center four holes in the bottom of the horizontal angle (#1).

DO NOT TIGHTEN NUTS ON THE BOLTS.

4. Slide both main frames (#28) into undercarriage tubes (#2) as shown. Bolt each main frame to its carrier tube using a 5/8"-18 UNF x 2" grade 5 bolt (#29), lockwasher and nut through the two welded-on tabs. Now tighten the nuts on the bolts holding the carrier tubes (#2) to the horizontal angle (#1).

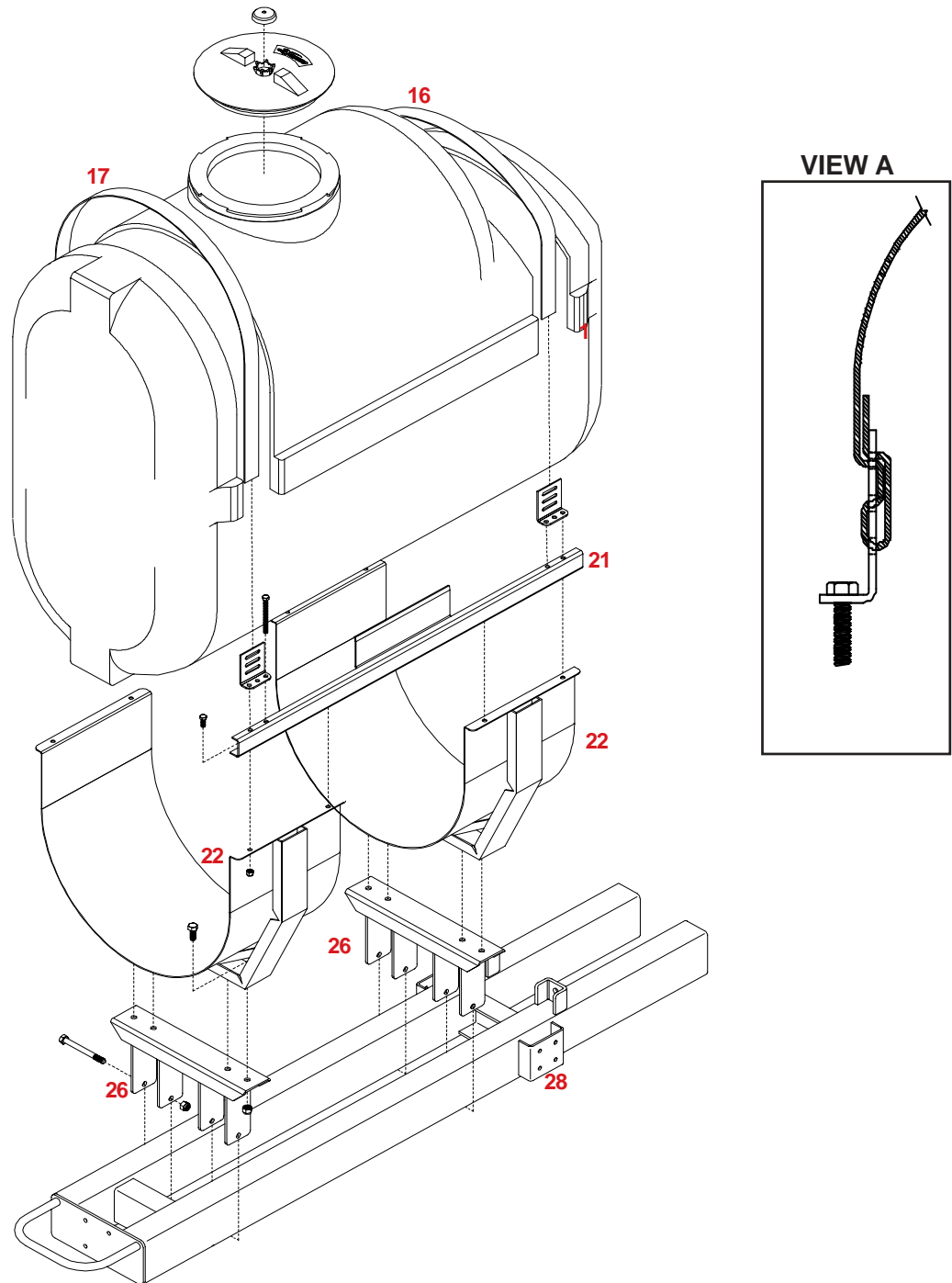


To remove or reinstall the "Quick Tach" Side Mounts

Remove the two 5/8" x 2" bolts (#29) through the angles on the mounting frames. Then pull the main frame out of the undercarriage tubes. If the jack and wheel option is used, put them in the vertical position and pull the main frame out and roll the unit away.

The tanks must be completely empty before they can be removed.

MOUNTING THE SADDLES AND TANKS



1. Place two saddle mounts (#26) on each of the main frames (#28) as shown. Bolt the saddle (#22) to the saddle mounts using 1/2" x 1" bolts and locknuts.

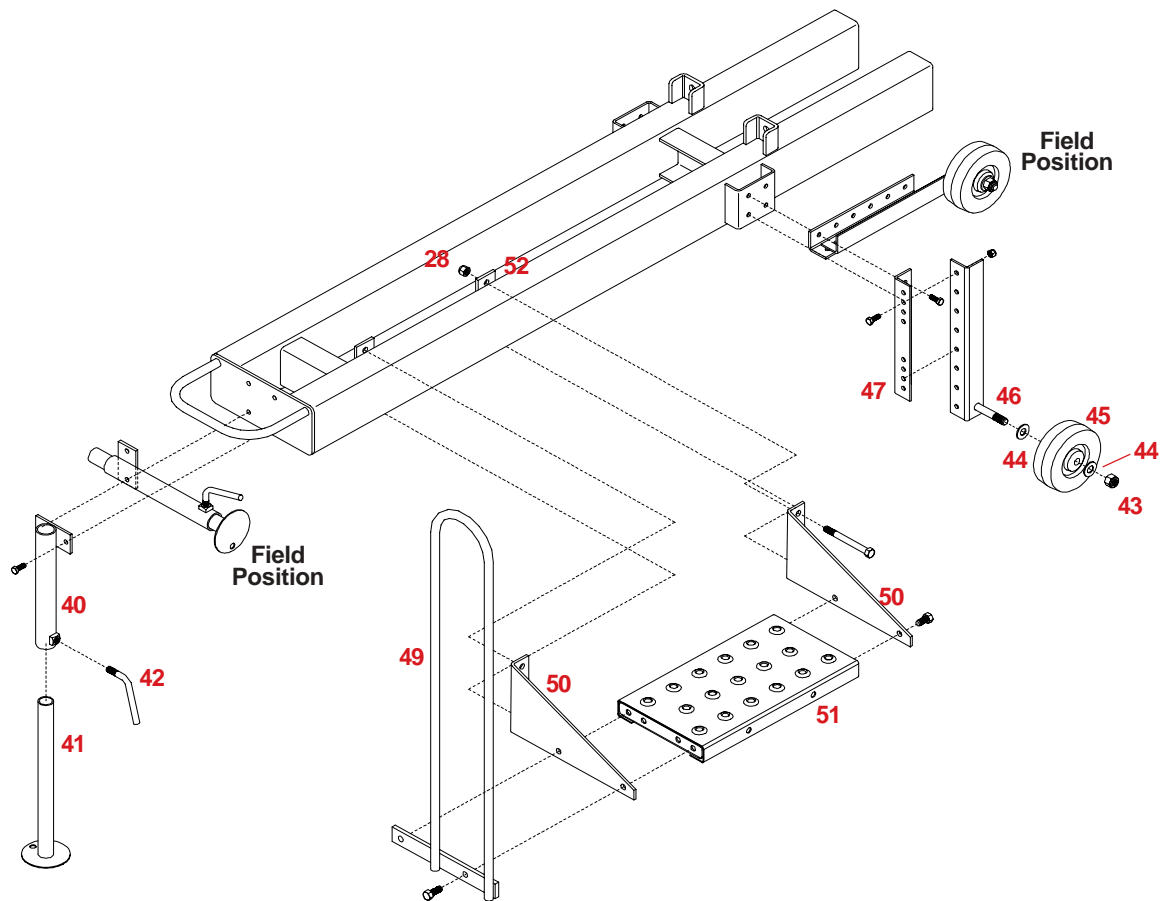
NOTE: The two outside saddle mounts may be placed nearer the center of the main frame for smaller tanks.

2. Bolt the tank spreader bar (#21) to the top of the saddles as shown using 3/8" x 1" bolts and locknuts. Set the tanks (#1) in the saddles as shown. Weave straps through anchors as shown in View A. Secure the tanks with saddle bands (#16 & #17) using 3/8" x 5" full thread bolts and nuts. Tighten the bolts sufficiently to securely hold the tank in place.

3. Slide the tank/saddle assembly in or out to establish final position on each side, taking care to see that each is positioned an equal distance from the ends of the main frames. Bolt the saddle carriers (#26) to the main frame (#28) using 1/2" x 4-1/2" bolts and locknuts.

NOTE: Make sure that the tanks are not too close to any exhaust manifolds or exhaust pipes. Failure to do so could result in tank damage and possible chemical spillage.

INSTALLING THE OPTIONAL JACK AND WHEELS (QTWL) MOUNTING THE OPTIONAL STEP PLATFORM (QTST)



MOUNTING THE JACK & WHEELS

1. Bolt the top half of the jack (#40) to the front set of holes in the end plate of the main frame (#28) using 3/8" x 1" bolts and locknuts. Slide the bottom half of the jack (#41) into the top half and secure with 1/2" lock handle (#42). When jack is needed, remove the top bolt, turn the jack to a vertical position, place bolt in rear hole and secure with the lockwasher and nut. Loosen locking handle until bottom part of the jack rests on ground and tighten locking handle again.

2. Place a 5/8" machine washer (#44) over the welded-in bolt located on the bottom of the axle bracket (#46). Slide one wheel (#45) onto the axle, place another 5/8" machine washer over the axle and secure with a 5/8" locknut (#43). Do not over tighten. Wheel must spin freely.

NOTE: Axle brackets (#46) are shipped with two *lefts* and two *rights*. A *right* axle bracket is shown in the illustration above.

3. Bolt the upper wheel bracket (#47) to the mount welded on the side of the main frame (#28) as shown using 3/8" x 1" bolts.

NOTE: For initial adjustment, bolt upper wheel bracket (#47)

to the mount in a vertical position. Bolt the axle bracket (#46) to the upper wheel bracket as shown using 3/8" x 1" bolts so that the wheel is an inch or two above the ground.

NOTE: When wheels are needed, remove the bolt, turn the bracket to a vertical position, replace the bolt and tighten.

MOUNTING THE STEP PLATFORM

1. Bolt the platform (#51) to the right side platform bracket (#50) using 1/2" x 1" bolts and locknuts.

2. Bolt the hand rail (#49) and the left side platform bracket (#50) to the left side of the platform using 1/2" x 1-1/4" bolts and locknuts.

3. Mount the assembled platform to the retaining plates (#52) using 1/2" x 4-1/2" bolts and locknuts. The platform may be placed in the front or rear of the main frame.

EQUIPMENT CHECKLIST:

Downtime caused by field breakdowns is costly and time consuming. Many breakdowns can be eliminated by periodic equipment maintenance. By spending time reviewing this checklist before seasonal spraying application time and following proper after-season care, you can save time and money later.



WARNING: To Prevent Serious Injury Or Death

- Keep hands, feet, and loose clothing away from rotating parts.
- Wear protective clothing recommended by your chemical and fertilizer manufacturer when working with chemicals.

Check Before Going To The Field :

- 1. HOSES**
Check all hoses for worn or soft spots. Be sure all hose clamps are tightened and hoses are not kinked or pinched. Check for leakage in any lines.
- 2. TANK**
Inspect fitting and grommets to insure they are in good condition.
- 3. CONTROLS**
Check for leakage, plugging, or wear on all valves, fittings, etc. Clean off any build up of foreign material.
- 4. PUMP**
Check to be sure pump turns freely.
- 5. FRAME**
Be sure all bolts are tightened.
- 6. REPLACEMENT PARTS**
Replace all worn or damaged parts.

After Season Care:

NOTE: It is important to wear proper safety equipment when cleaning the sprayer. See your chemical or fertilizer package for this information.

1. After spraying chemicals, run water mixed with cleaners through tank, pump and all hose hookups. If wettable powder dries out in the system, it is very difficult to put back into suspension and can cause malfunction, damage or injury.
2. When cleaned, tank should have all openings closed or covered to keep dirt from entering.
3. Pump should be flushed with soluble oil and pump ports plugged to keep out moisture and air.
4. Disassemble tips and rinse with water or cleaning solution. (Appropriate for chemical sprayed). Never use wire or hard object that could distort opening.
5. Dispose of all unused chemicals or solutions in a proper and ecologically sound manner.
6. Water rinse and dry tips before storing.

NOTE: DETHMERS MANUFACTURING COMPANY does not and will not make any recommendations concerning application of various chemicals or solutions. These recommendations relate to either amount or procedure of materials applied. If you have any questions regarding application of certain chemicals or solutions, contact your chemical supplier and follow chemical manufacturer recommendations.



DETHMERS MFG. COMPANY

P.O. BOX 189

4010 320th St., BOYDEN, IA. 51234

PH: (712) 725-2311 or (712) 725-2302

FAX: (712) 725-2380

TOLL FREE: 1-800-54DEMCO (1-800-543-3626)

www.demco-products.com