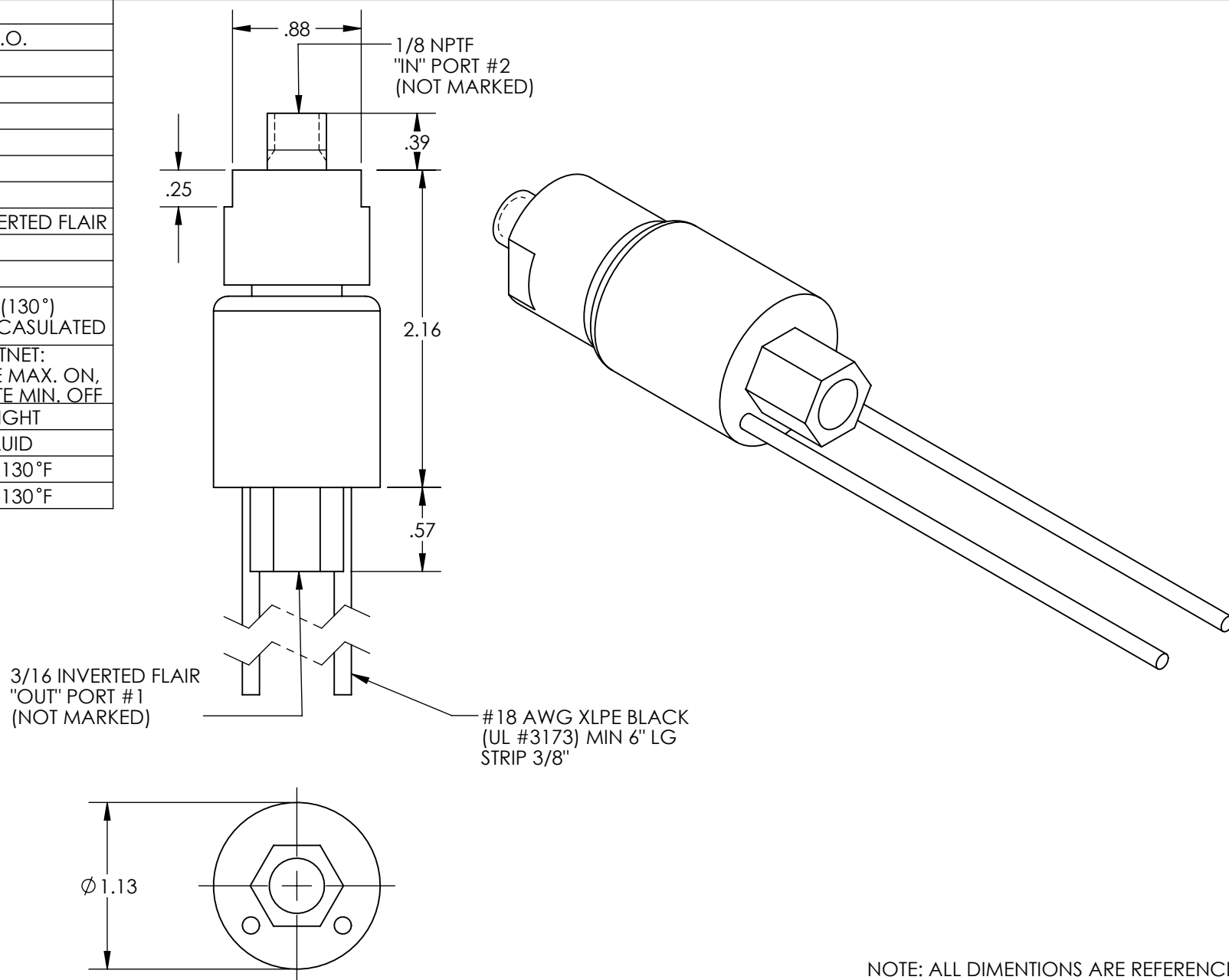


| VALVE DATA | |
|---------------|--|
| DESCRIPTION | 2-WAY N.O. |
| ORIFICE | 1/32 |
| VOLTAGE | 12 VDC |
| WATTAGE | 8 |
| PRESSURE | 800 PSI |
| SEAL, PLGR | EPR |
| O-RING BODY | EPR |
| PORT #1 | 3/16 INVERTED FLAIR |
| PORT #2 | 1/8 NPTF |
| BODY MAT | BRASS |
| COIL | CLASS-B (130°) EPOXY ECASULATED |
| DUTY CYCLE | INTERMITTNET: 5 MINUTE MAX. ON, 10 MINUTE MIN. OFF |
| LEAKAGE | BUBBLE TIGHT |
| MEDIA | BRAKE FLUID |
| MEDIA TEMP. | -30 °F TO 130 °F |
| AMBIENT TEMP. | -30 °F TO 130 °F |



NOTE: ALL DIMENTIONS ARE REFERENCE

| | | | | | |
|--|---|---|---|---|--------------------------|
| 4010 320TH ST. PO BOX 189 BOYDEN, IOWA 51234 THE DRAWING AND ALL INFORMATION THERE ON ARE THE PROPERTY OF DEMCO | THIRD ANGLE PROJECTION | DRAWN BY billvp APPOV. BY TL SAVED BY JCN | DATE 04/07/05 DATE 4/23/12 DATE 04/23/12 | DESCRIPTION INLINE, NON BYPASS SOLENOID DRAWING. NO. 11993 SCALE: 1:1 | REV — SHEET 1 OF 1 |
| | UNLESS OTHERWISE SPECIFIED ALL DIMENSIONS ARE IN INCHES | WEIGHT 0.60915537 VOLUME 2.14491328693 | TOLERANCES .X = ±.060 .XX = ±.030 .XXX = ±.010 MIN. MACHINE SURFACE 250 BREAK ALL SHARP EDGES BEND AND DRAFT $\angle \pm 1^\circ$ | | |