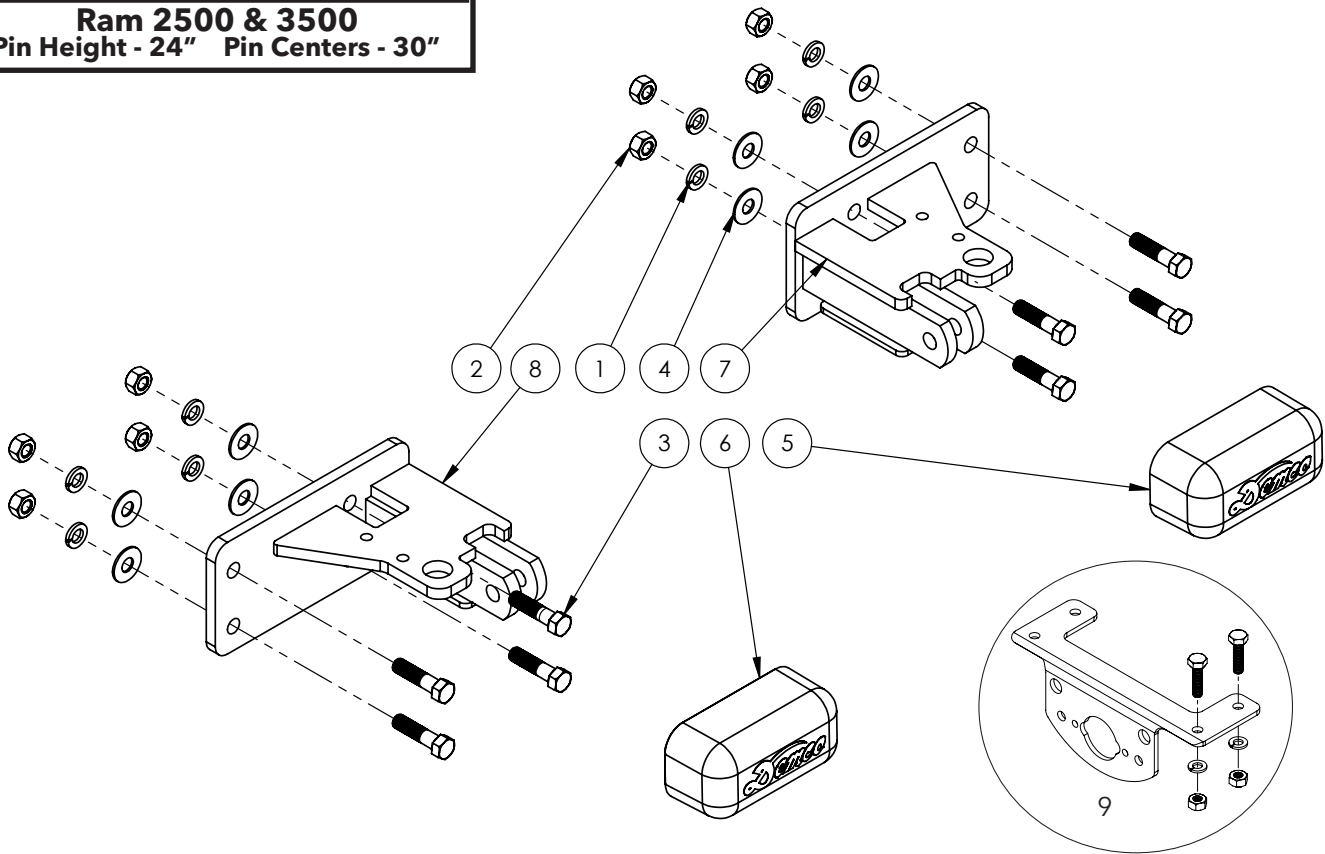


BASEPLATE 9518134

Dodge Ram 1500, 2500 & 3500 & Dodge Ram Mega Cab & Diesel Ram

<p>Ram 1500 Pin Height - 24" Pin Centers - 26"</p>
<p>Ram 2500 & 3500 Pin Height - 24" Pin Centers - 30"</p>



ITEM	PART #	QTY	DESCRIPTION
1	00078	8	WASHER, SPRING LOCK, .438
2	00079	8	NUT, .434NC HEX
3	00203	8	BOLT, .438NC X 1.75 HEX GR.5
4	00205	8	FLATWASHER .438
5	12979	1	BASEPLATE PULL EAR COVER "A"
6	12980	1	BASEPLATE PULL EAR COVER "B"
7	13134-72	1	BASEPLATE PULL POD LEFT
8	13135-72	1	BASEPLATE PULL POD RIGHT
9	5937	1	PLUG MOUNT KIT
10	12329	-	LOCTITE (NOT SHOWN)

Please order replacement parts by PART NO. and DESCRIPTION.

Introduction

WARNING: FAILURE TO FOLLOW THESE INSTRUCTIONS CAN RESULT IN LOSS OF TOWING VEHICLE CONTROL, SEPARATION OF THE TOW BAR FROM THE TOWING VEHICLE, SEPARATION OF THE TOWED VEHICLE FROM THE TOW BAR, CAUSING SEVERE PERSONAL INJURY, DEATH, OR PROPERTY DAMAGE.

WARRANTY POLICY, OPERATOR MANUALS & REGISTRATION

Go online to www.demco-products.com to review Demco warranty policies, operator manuals and register your Demco product.

CAUTION

Safety is of utmost importance at all times. There are several items that must be checked each time before using and while using a tow bar.

Before allowing anyone to hook up or operate a tow bar, be sure they have read and understand the proper operating procedure.

DO NOT use worn or damaged cables and/or pins.

Be sure the **SAFETY CABLES** are hooked, chassis to chassis, to both the towing and towed vehicles using the crisscross method.

Check clearance between vehicles in a turning situation.

Check base plate mounting bolts for tightness and frame for metal fatigue.

Do not load the towed vehicle with anything as you may exceed the towing capacity of the tow bar.

Keep fingers away from pivot points to prevent personal injury.

Be sure the steering components of the towed vehicle are properly aligned.


Demco baseplates are designed for use on factory vehicle suspension setups. Demco baseplates are not recommended for use on modified suspensions lowered or raised. Towing vehicle must be larger and at least 500 lbs. heavier than the towed vehicle and tow bar combined.

NOTE: This unit can be backed up in moderate increments. Any severe backwards cornering could result in damage to the Tow Bar and/or towed vehicle chassis.

For automatic transmissions: Consult your vehicle owners manual for towing suitability with the drive shaft connected. Otherwise, the towed vehicle will have to be equipped with a transmission pump or drive shaft disconnect.

Check to make sure that all lights are in proper working order.

The information on towability of vehicles is reprinted with permission of MotorHome® Magazine, and is believed to be reliable. However, Demco does not warrant the information to be correct. Always consult your towed vehicle owner's manual and follow towing instructions. Each year, MotorHome® Magazine, compiles a list of vehicles that can be towed four-down behind a motorhome with no modifications required.

 **Caution: MotorHome® Magazine** left out any vehicles that have towing speed limits slower than 55 m.p.h., or distance limits of less than 200 miles. At a minimum, these vehicles require significant modification, such as the use of an aftermarket product, to make them towable. The availability of a **Demco Tow Bar Base Plate does not** imply that these vehicles can be modified or that there is an aftermarket product available. Refer to your vehicle owner's manual or consult your dealer to determine whether your vehicle can be modified to make it towable. Failure to observe this precaution could result in property damage or personal injury.

IMPORTANT INSTALLATION ITEMS

DEMCO products and accessories are intended to be installed by professional installers with experience, proper equipment and the ability to do modification work. Installers with these qualifications can be found in RV and Automotive Service Centers.

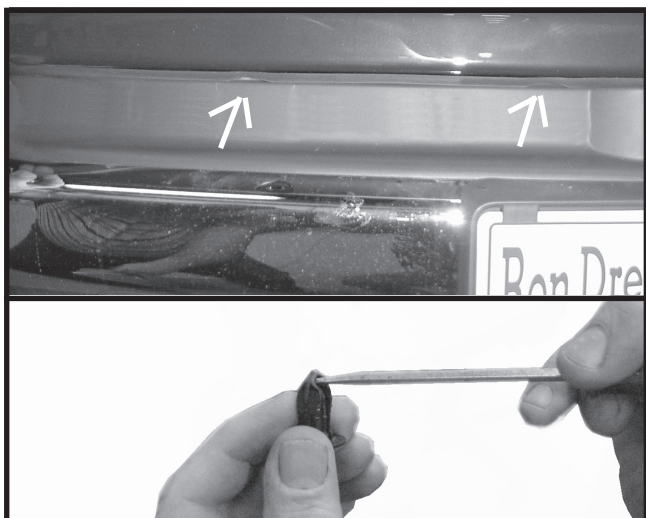
If the car to be towed has been in an accident, the chassis may be damaged in an area where the Base Plate attaches. It may no longer be suitable for towing. Extreme caution and careful examination are required in such a situation. It is also likely, even from a minor accident, that the hole alignment will be more difficult due to hole alignment problems.

Many DEMCO Base Plates are designed to use existing holes and hardware to mount the Base Plate to the towed vehicle. Even though the bolt is there, however, do not assume it is adequate for mounting the Base Plate. Manufacturers make many changes in hardware both within and between model years. Be sure the bolt is long enough to protrude past the nut a distance no less than 1/2 the diameter of the bolt, after the Base Plate is mounted. The threads should be in good condition. **We require that "LOCTITE® Blue" be used on all bolts.** If a new bolt is required, be sure it is SAE Grade 5 or Metric 8.8.

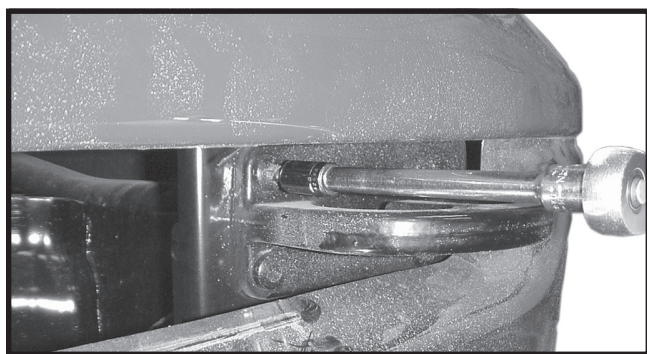
NOTE: The dimensional variations between otherwise identical vehicles can be considerable. Some minor modifications may have to be made to ensure a proper fit.

BOLT TORQUE SPECIFICATIONS STANDARD BOLTS: METRIC BOLTS:

Size	Grade	Torque	Size	Grade	Torque
5/16"	5	18 ft/lbs	8mm	8	23 ft/lbs
3/8"	5	30 ft/lbs	10mm	8	45 ft/lbs
7/16"	5	50 ft/lbs	12mm	8	78 ft/lbs
1/2"	5	75 ft/lbs	14mm	8	125 ft/lbs



1. Open hood for ease of assembly. Remove bumper filler panel, by removing four plastic push fasteners from underneath front side of filler panel. If the phillips head plastic screw won't turn out, push plastic stem down from backside with small blade screwdriver, then pull out fastener.



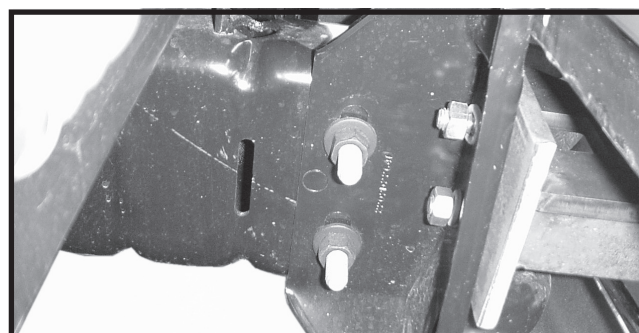
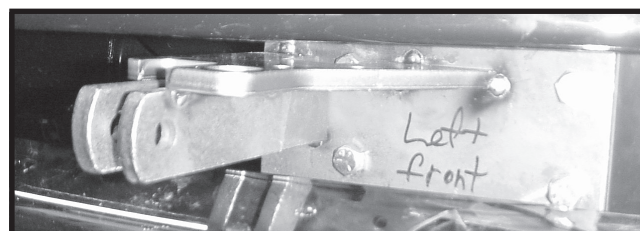
2. Remove tow hooks if equipped, if not equipped with tow hooks remove right and left filler panels, or solid filler panel.
 - a. For diesel Pickups remove 3 nuts on one side of bumper and pull away from frame. To fit pull pod between intercooler and bumper on each side. Bumper can also be completely remove if desired.



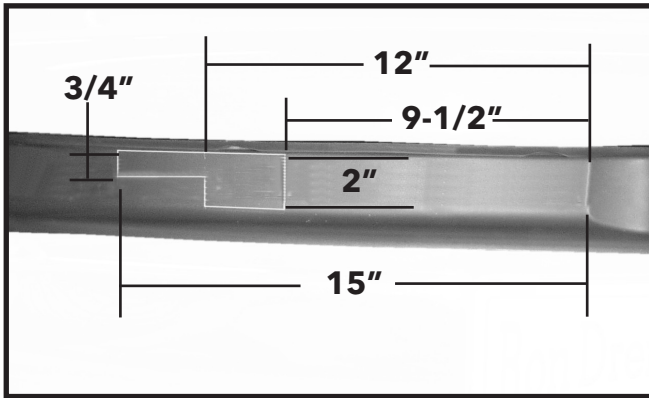
3. Install left and right pull pods by putting in from the back of bumper through filler panel/ tow hook opening and slide over to mounting holes.



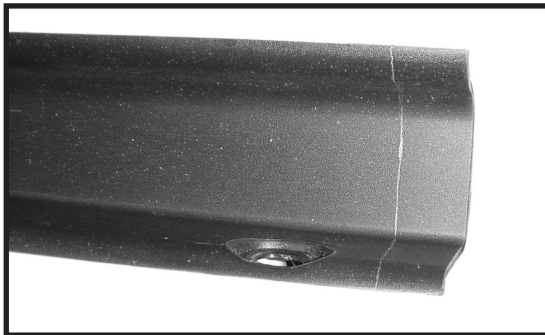
4. On some 1500's three holes may need to be drilled on each side. Bolt pods on with outside top bolts, mark other three holes and drill.



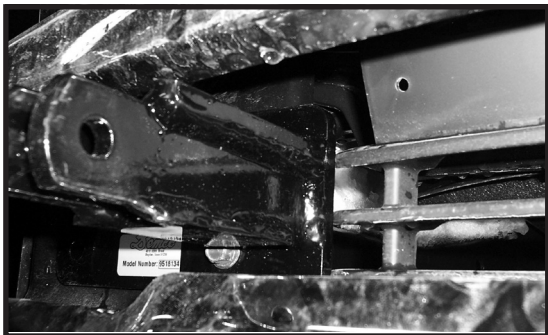
5. Put four 7/16" x 1-1/4" bolts in from the front and 7/16" Flatwasher, 7/16" lock washers and 7/16" nuts on back of bumper flange. **NOTE:** Check front page for correct right and left pull pod positions (chain anchor hole towards outside). **Use *LOCTITE* on all bolts.** Adjust pods and tighten bolts according to bolt chart on front page.



6. Mark panel by measuring 9-1/2" and 12" from edge of center panel hump and making two 2" vertical line from inner top panel edge. Then measure from hump 15" and mark a 3/4" vertical line down from top panel edge. You should have an outline marked on both sides of hump as shown in picture. Carefully cut out panel so pull ears may pass through and reinstall panel.



7. Vehicles that are equipped with tow hooks, cut one inch off end of fascia.



8. **2010 and newer** - top three horizontal bars may be trimmed for clearance of the pull pod.



9. Plug mount (item #9) may be installed if desired for wiring installation. Location of mount to be determined by the installer.

NOTE: Excess material may be trimmed from bracket.

DEMCO

4010 320th St., Boyden, IA. 51234

Phone: (712) 725-2311

Fax: (712) 725-2380

Toll Free: 1-800-54DEMCO (1-800-543-3626)

Demco warranty policies, operator manuals, and product registration can be found online:

www.demco-products.com