



**PARTS MANUAL**

**DEMCO GRAIN CART**

**WITH**

**LANDFLEX TRACKS™**

**AND**

**EARTHFORM™ SUSPENSION**

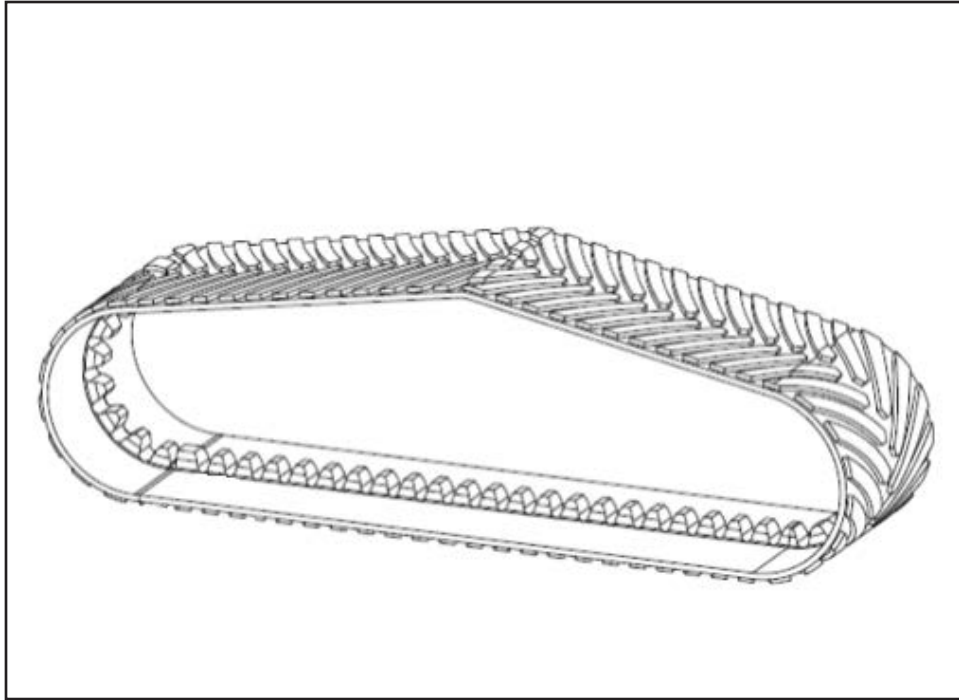
**23 October 2025**

## PARTS

| <u>SECTION</u> | <u>TOPIC</u>                               | <u>PAGE</u> |
|----------------|--|-------------|
| 1.1            | BELT                                       | 3           |
| 1.2            | IDLER WHEELS                               | 4           |
| 1.3            | MID CARRIAGE ASSEMBLY                      | 5           |
| 1.4            | MID / LOWER CARRIAGE ASSEMBLY              | 6           |
| 1.5            | SUSPENSION HYDRAULICS                      | 7           |
| 1.6            | BELT TENSION HYDRAULICS                    | 8           |
| 2.1            | BELT SUPPORT ASSEMBLY                      | 9           |
| 2.2            | BELT SUPPORT WHEEL HUB                     | 10          |
| 2.3            | FRONT IDLER ARM, SHAFT, BUSHINGS AND SEALS | 11          |
| 2.4            | IDLER HUB ASSEMBLY                         | 12          |
| 3.1            | REAR IDER ARM W/ TENSION ARM ASSEMBLY      | 13          |
| 3.2            | REAR IDER ARM W/ ALIGNMENT ARM             | 14          |
| 3.3            | REAR IDER ARM BUSHINGS AND SEALS           | 15          |
| 4.1            | LOWER UNDERCARRIAGE                        | 16          |
| 4.2            | BOGIE AXLES TO WALKING BEAM                | 17          |
| 4.3            | BOGIE ROLL AXLE ASSEMBLY                   | 18          |
| 5.0            | SERVICE TOOLS – BEARINGS & SEALS           | 19          |
| 5.1            | SERVICE TOOLS – CHARGE KIT                 | 20          |
| 5.2            | SERVICE TOOLS – NITROGEN CHARGE PORT       | 21          |

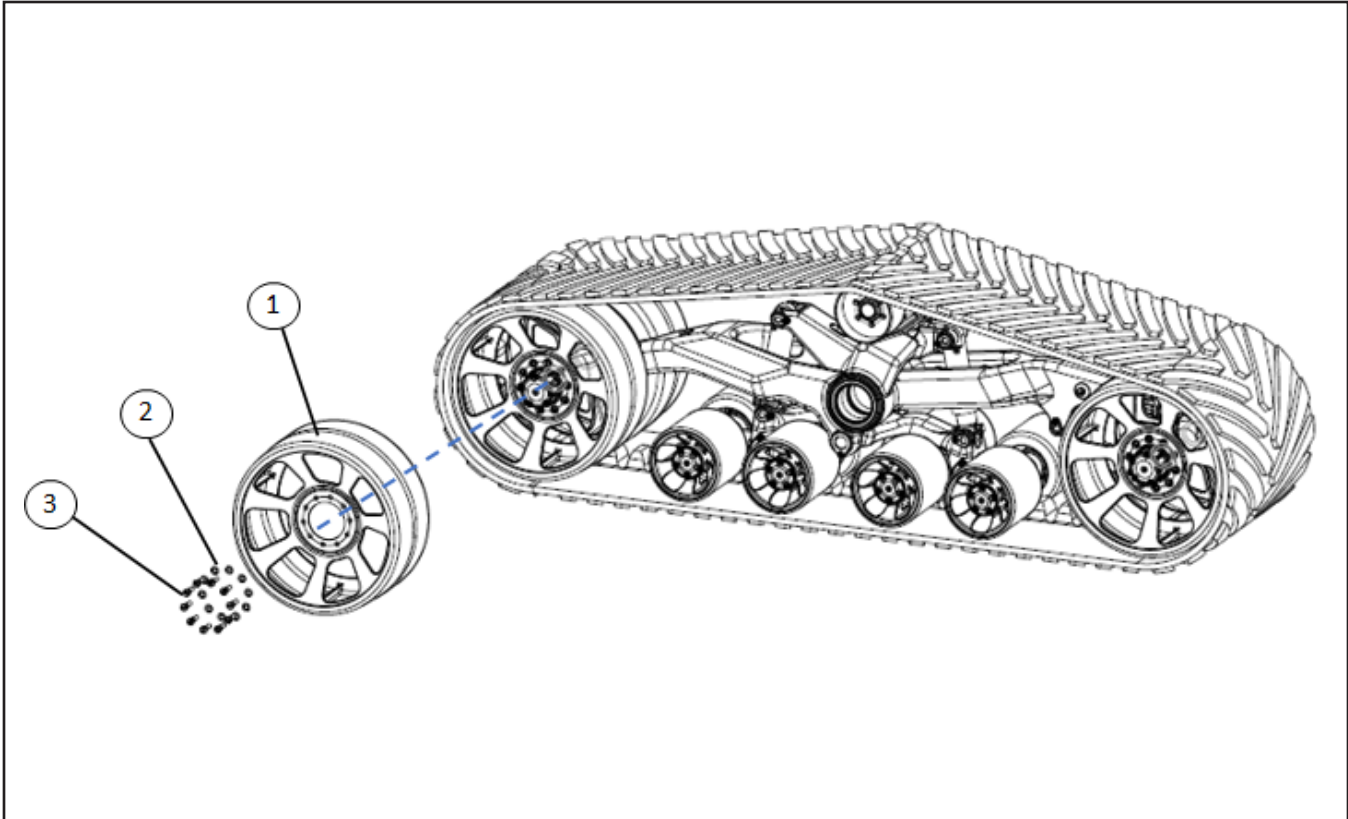
## 1.1 BELT

---



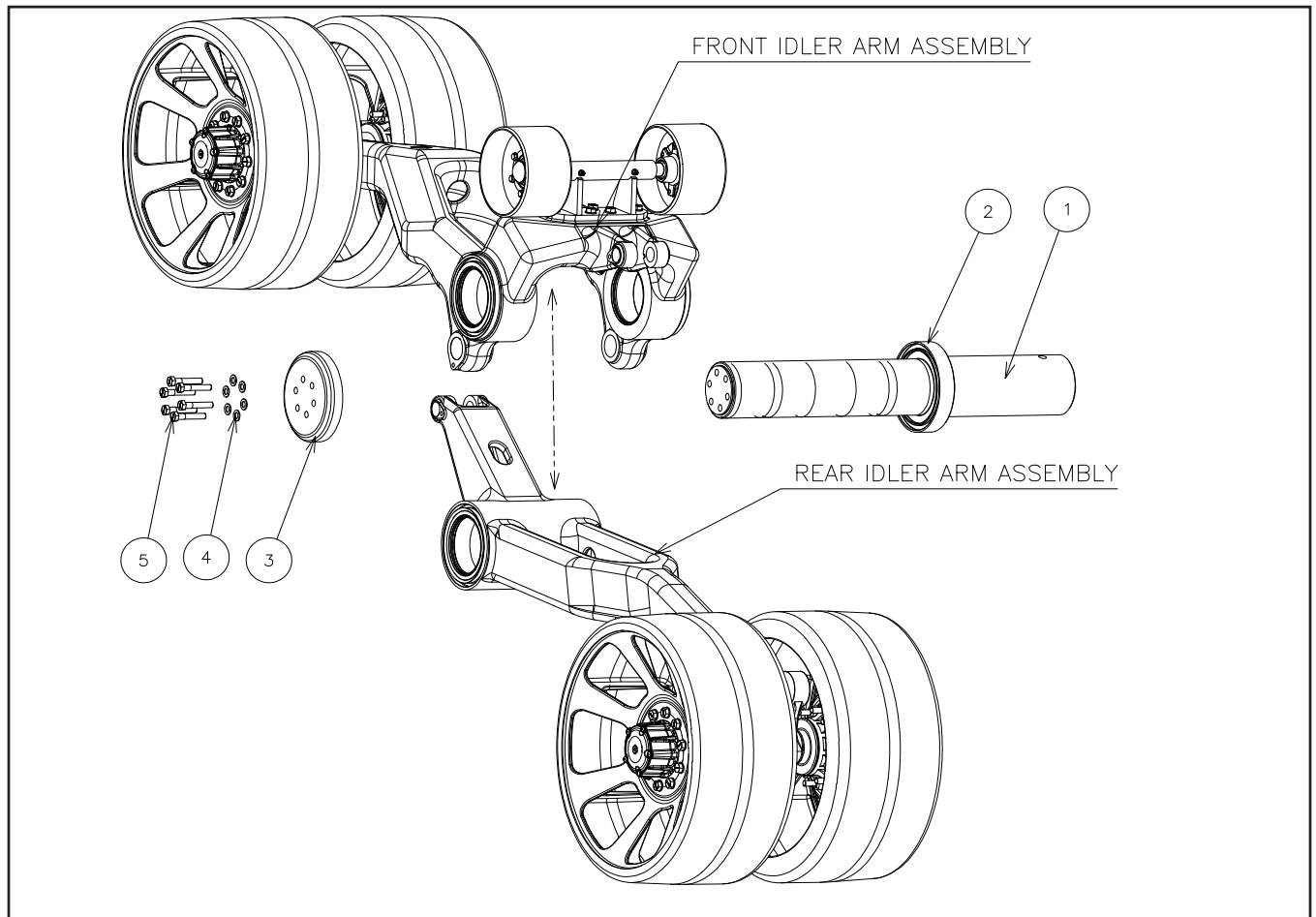
| REF. NO. | PART NO. | DESCRIPTION                   | QTY PER MODULE |
|----------|----------|-------------------------------|----------------|
| 1        | A0989    | BELT, 372" x 42", GRAIN CART" | 1              |

## 1.2 IDLER WHEELS



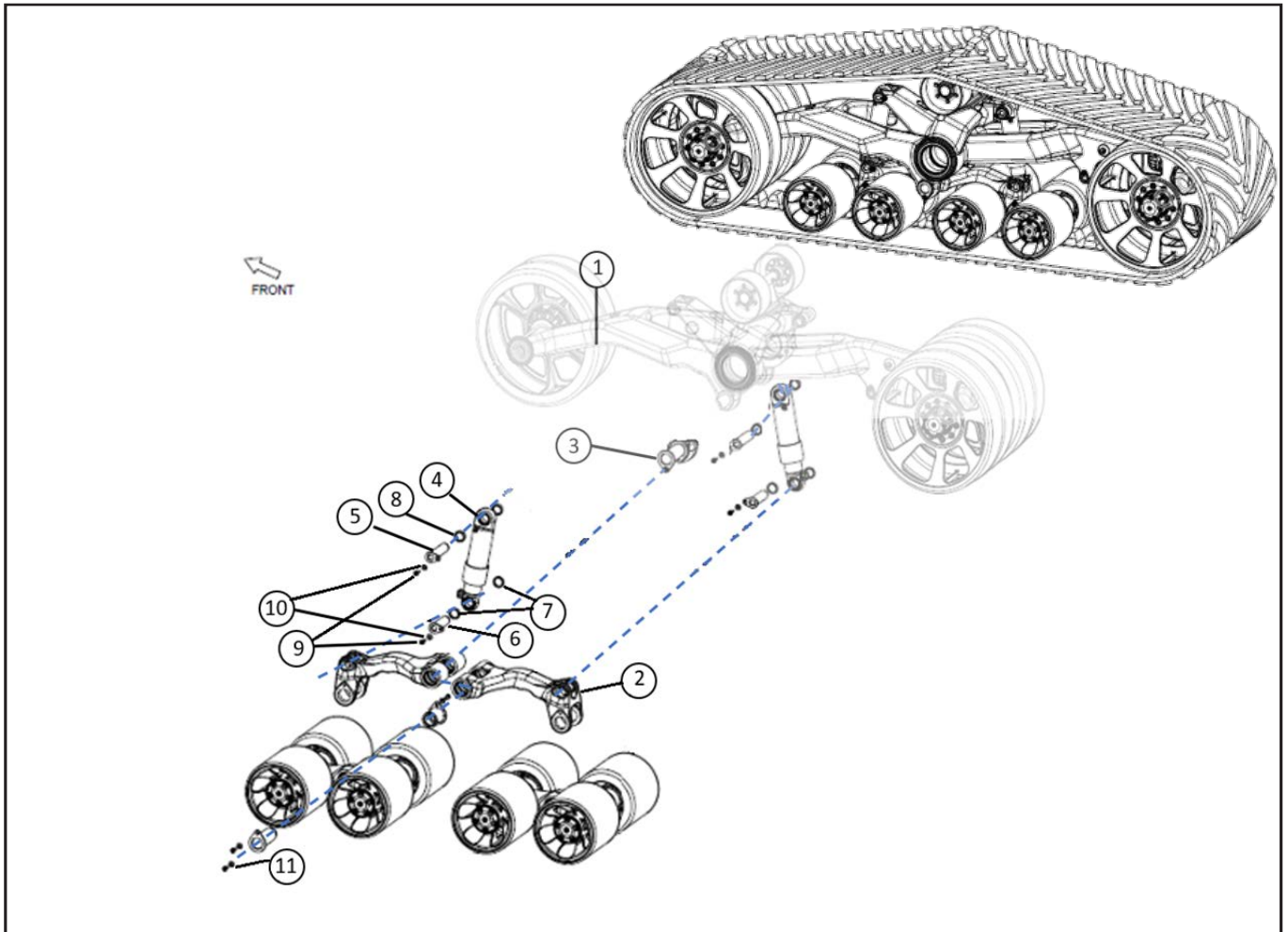
| REF. NO. | PART NO. | DESCRIPTION                     | QTY PER MODULE |
|----------|----------|---------------------------------|----------------|
| 1        | A0987    | Wheel, Idler, 36" Dia, 42" Belt | 4              |
| 2        | A0239    | Washer, M20 Hardened            | 40             |
| 3        | A0550    | Bolt, M20-2.5 X 70 GR 10.9      | 40             |

# 1.3 MID CARRIAGE ASSEMBLY



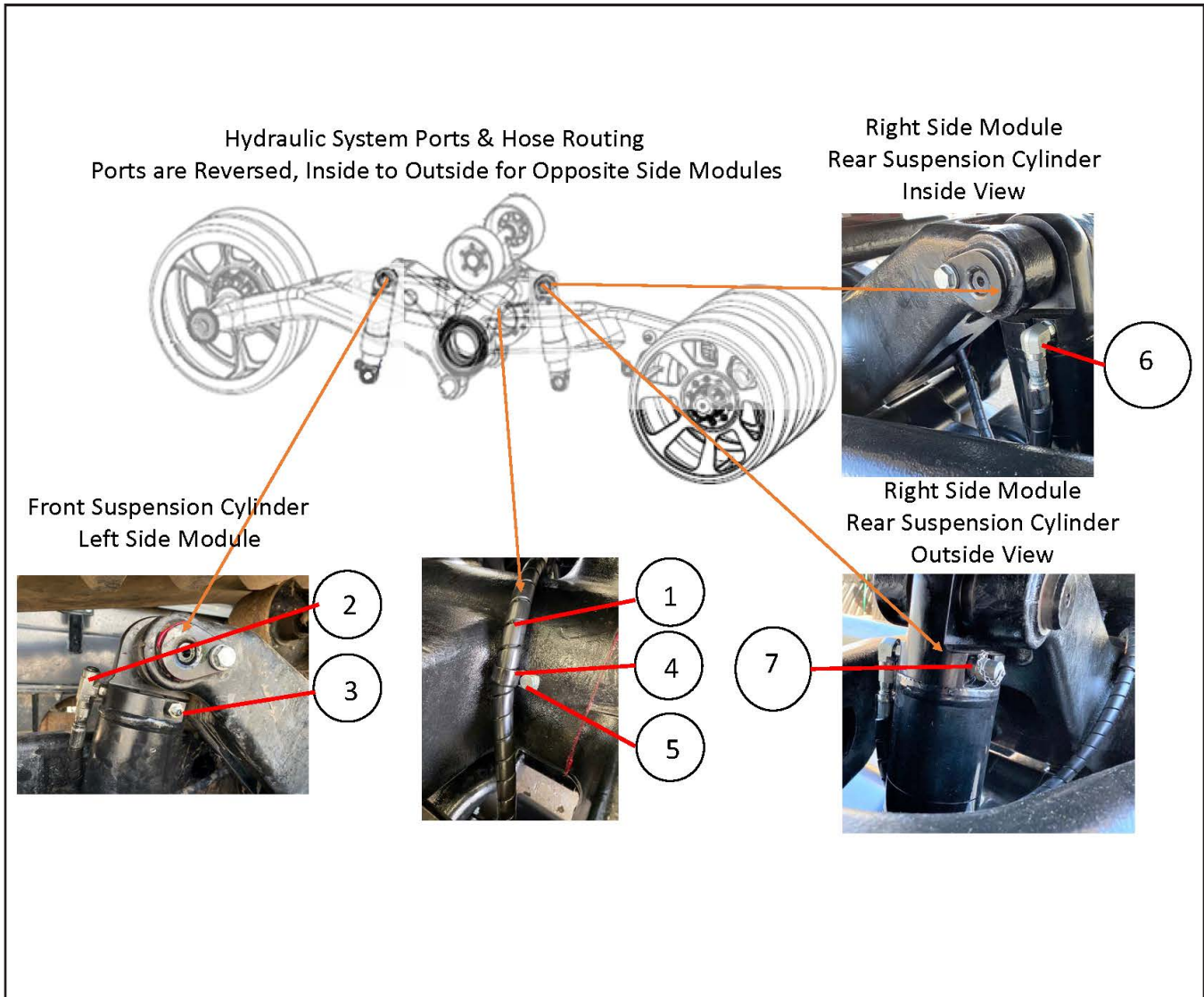
| REF. NO. | PART NO. | DESCRIPTION                            | QTY PER MODULE |
|----------|----------|--|----------------|
| 1        | A2138    | Pin, Oscillation Pivot                 | 1              |
| 2        | A2140    | Ring, Thrust                           | 1              |
| 3        | A2141    | Retainer, Front Idler Arm              | 1              |
| 4        | A0239    | Washer, M20 Hardened                   | 6              |
| 5        | A2142    | Bolt, M20-2.5x100 GR 10.9, Full Thread | 6              |

## 1.4 MID / LOWER CARRIAGE ASSEMBLY



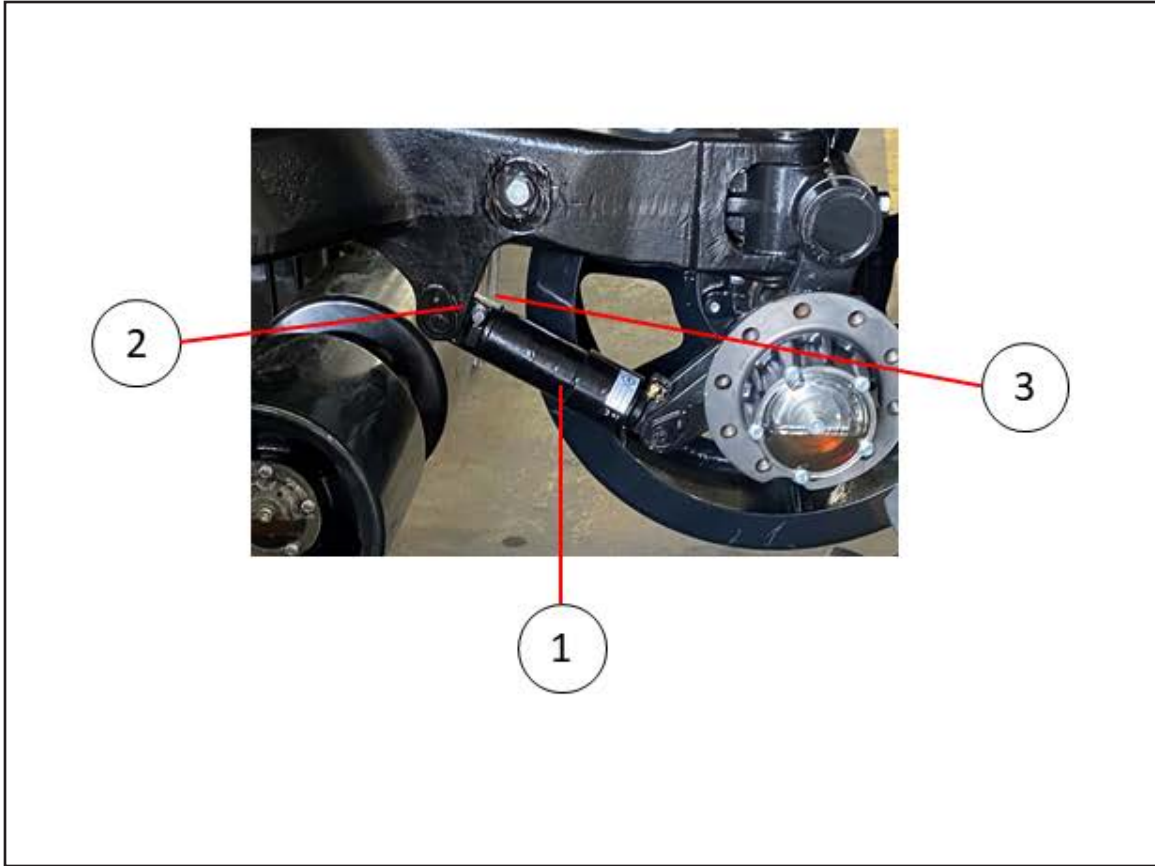
| REF. NO. | PART NO. | DESCRIPTION                                     | QTY PER MODULE |
|----------|----------|---|----------------|
| 1        |          | MID CARRIAGE ASSEMBLY                           | 1              |
| 2        | A0999    | ARM, HD TRAIL                                   | 2              |
| 3        | A0909    | PIN, TRAIL ARM CONNECTION                       | 1              |
| 4        | A0950    | CYLINDER, HD SUSPENSION                         | 2              |
| 5        | A0959    | PIN, SUSPENSION CYLINDER, UPPER, 50 mm X 205 mm | 2              |
| 6        | A0960    | PIN, SUSPENSION CYLINDER, LOWER, 50mm X 167 mm  | 2              |
| 7        | A0962    | SPACER, SUSPENSION CYLINDER, LOWER              | 4              |
| 8        | A0963    | SPACER, SUSPENSION CYLINDER, UPPER              | 4              |
| 9        | A0799    | BOLT, M14-2 X 35 GR 10.9                        | 5              |
| 10       | A0053    | WASHER, M14, SPECIAL LOCK                       | 5              |
| 11       | A1010    | BOLT, M24-3 X 70MM GRADE 10.9 PLATED            | 1              |

# 1.5 SUSPENSION HYDRAULICS



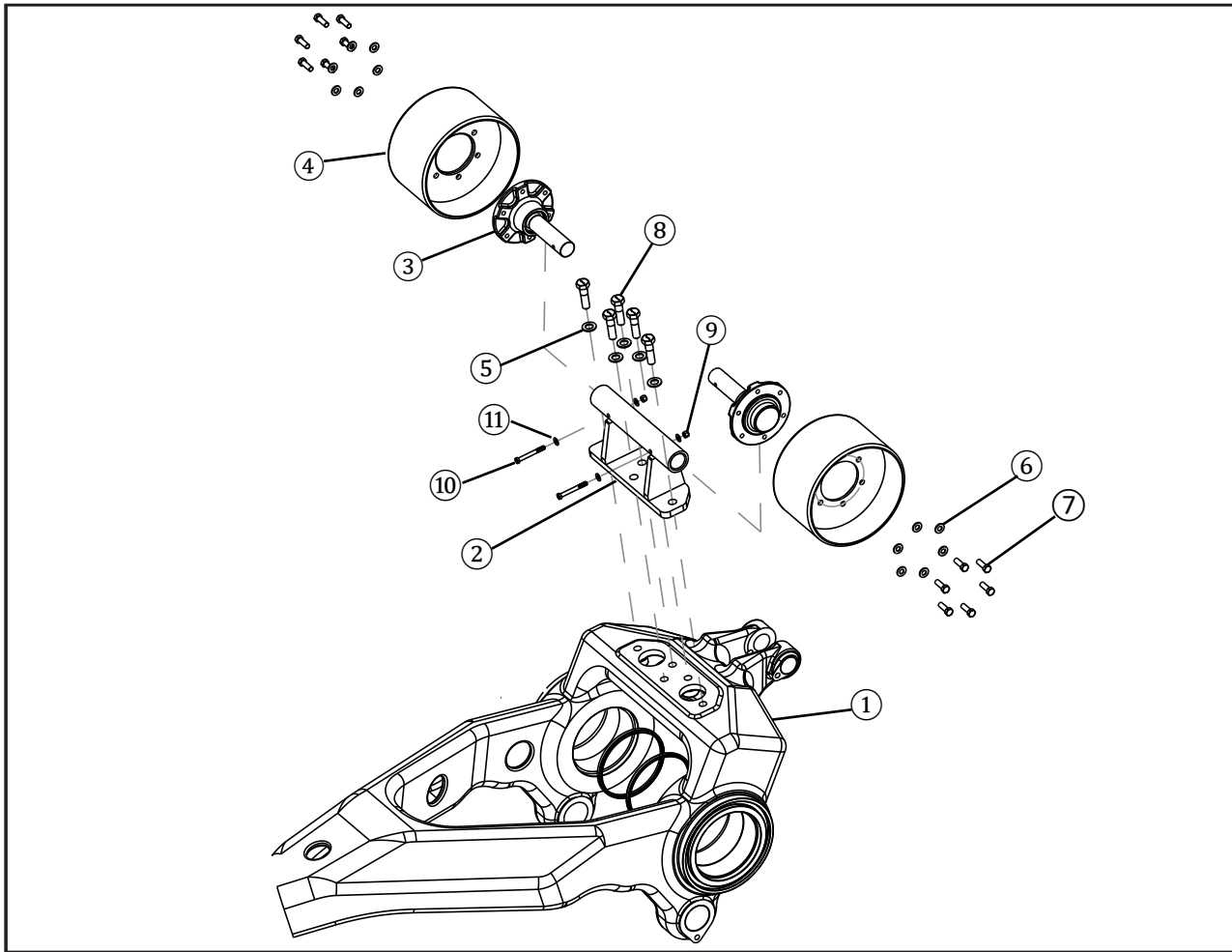
| REF. NO. | PART NO. | DESCRIPTION                                    | QTY PER MODULE |
|----------|----------|--|----------------|
| 1        | A0743    | Hose, Suspension                               | 1              |
| 2        | A0682    | Fitting, FORB-FORB-MAORB SAE -6, Tee           | 1              |
| 3        | A0146    | Valve, Cylinder Bleeder                        | 1              |
| 4        | A2147    | P-Clip, 1" Vinyl Coated Steel Clamp 13/32 Hole | 1              |
| 5        | A2148    | Bolt, M10-1.5x20 GR 10.9, Hex, Zinc Plated     | 1              |
| 6        | A2149    | Fitting, 06-06-NWO 90 Degree                   | 1              |
| 7        | A0845    | Port, Charge                                   | 1              |

## 1.6 BELT TENSION HYDRAULICS



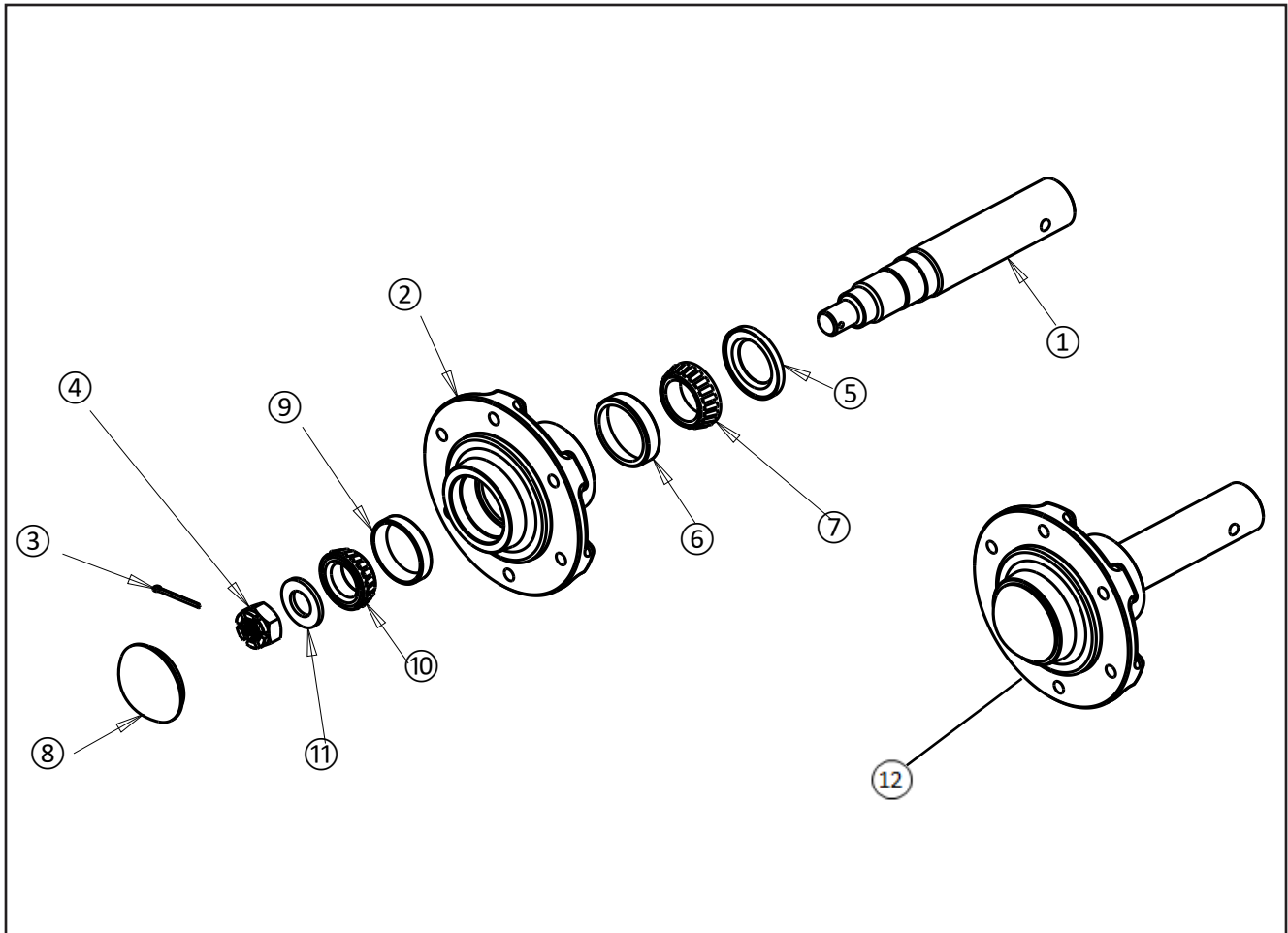
| REF. NO. | PART NO. | DESCRIPTION                                   | QTY PER ASSEMBLY |
|----------|----------|---|------------------|
| 1        | A0551B   | Cylinder, MB Hydraulic Integrated Accumulator | 1                |
| 2        | A0845    | PORT, CHARGE                                  | 1                |
| 3        | A0146    | VALVE,CYLINDER BLEEDER                        | 1                |

## 2.1 BELT SUPPORT ASSEMBLY



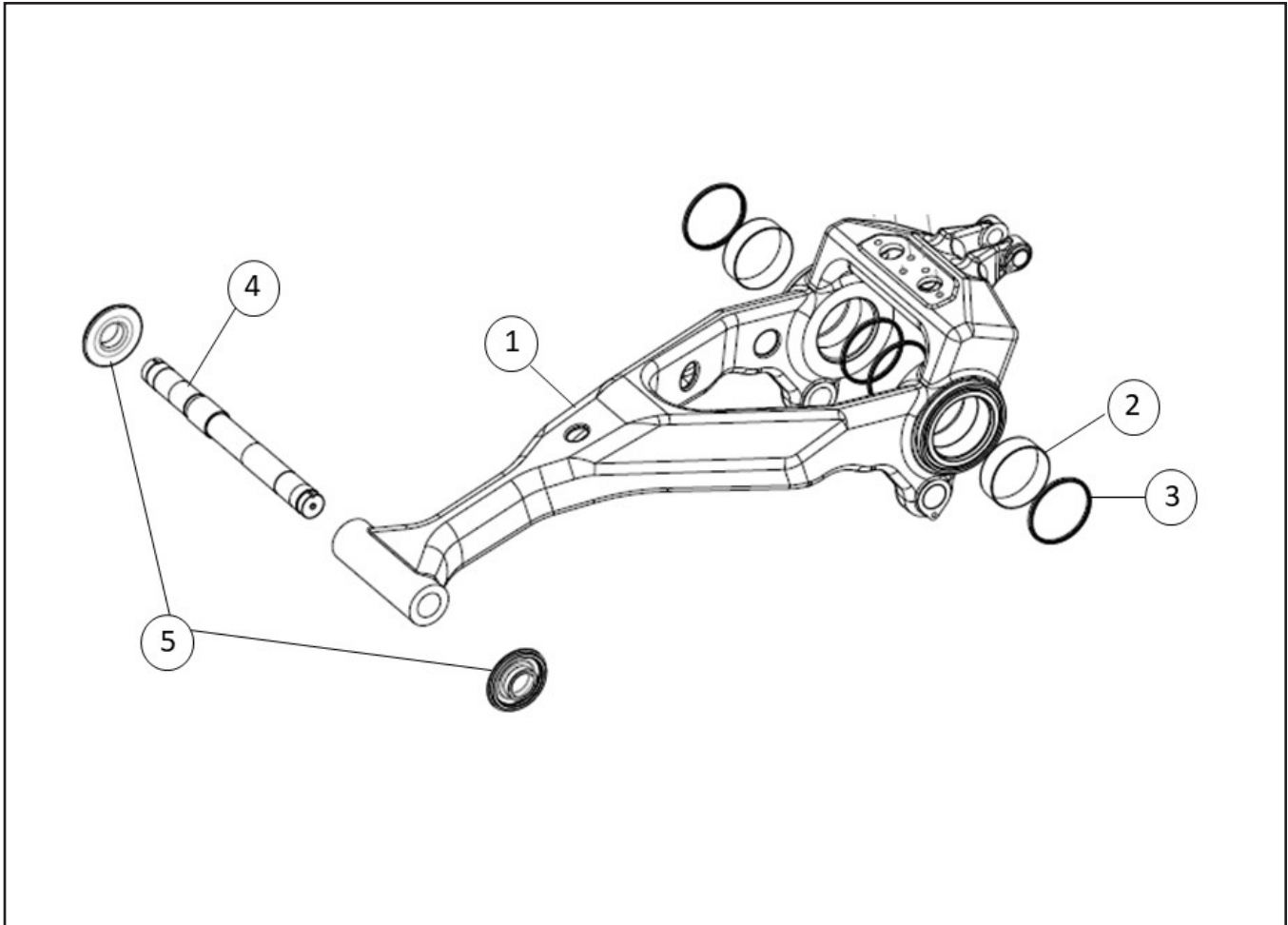
| REF. NO. | PART NO. | DESCRIPTION                                    | QTY PER ASSEMBLY |
|----------|----------|--|------------------|
| 1        | A0964    | ARM, FRONT IDLER                               | 1                |
| 2        | A0968    | BASE, BELT SUPPORT WELDMENT                    | 1                |
| 3        | A1120    | ASSEMBLY, BELT SUPPORT HUB                     | 2                |
| 4        | A0969    | WHEEL, BELT ROLLER, WELDMENT, 12"OD X 8" WIDTH | 2                |
| 5        | A0239    | WASHER, M20 HARDENED                           | 5                |
| 6        | A1103    | WASHER 1/2", GRADE 8, ZINC                     | 12               |
| 7        | A1102    | BOLT, 1/2-20 x 1.5", GRADE 5, FULL THREAD      | 12               |
| 8        | A2145    | BOLT, M20-2.5 X 60 GRADE 10.9                  | 5                |
| 9        | A1108    | NUT, 3/8"-16, GRADE 8, HEX, NYLON LOCK,        | 2                |
| 10       | A1106    | BOLT, 3/8"-16 x 3.25", GRADE 8                 | 2                |
| 11       | A1107    | WASHER, 3/8", GRADE 8, ZINC                    | 4                |

## 2.2 BELT SUPPORT WHEEL HUB



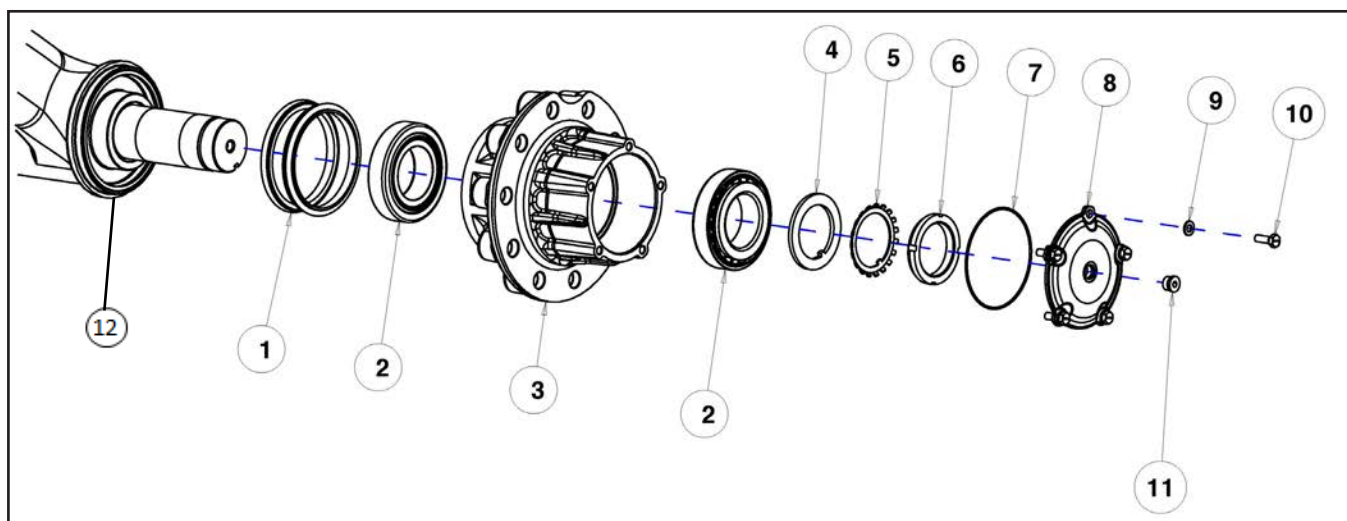
| REF. NO. | PART NO. | DESCRIPTION                   | QTY PER ASSEMBLY |
|----------|----------|-------------------------------|------------------|
| 1        | A1112    | SHAFT, SPINDLE                | 1                |
| 2        | A1111    | HUB WITH BEARING CUPS         | 1                |
| 3        | A1118    | PIN, COTTER                   | 1                |
| 4        | A1117    | NUT, CASTLE                   | 1                |
| 5        | A1115    | SEAL, GREASE                  | 1                |
| 6        |          | INNER CUP INCLUDED WITH HUB   | 1                |
| 7        | A1113    | ROLLER BEARING, INNER         | 1                |
| 8        | A1119    | SPINDLE CAP                   | 1                |
| 9        |          | OUTER CUP INCLUDED WITH HUB   | 1                |
| 10       | A1114    | ROLLER BEARING, OUTER         | 1                |
| 11       | A1116    | FLAT WASHER, STEEL            | 1                |
| 12       | A1120    | HUB AND SPINDLE, BELT SUPPORT | 1                |

## 2.3 FRONT IDLER ARM, SHAFT, SEAL CUPS, BUSHINGS & SEALS



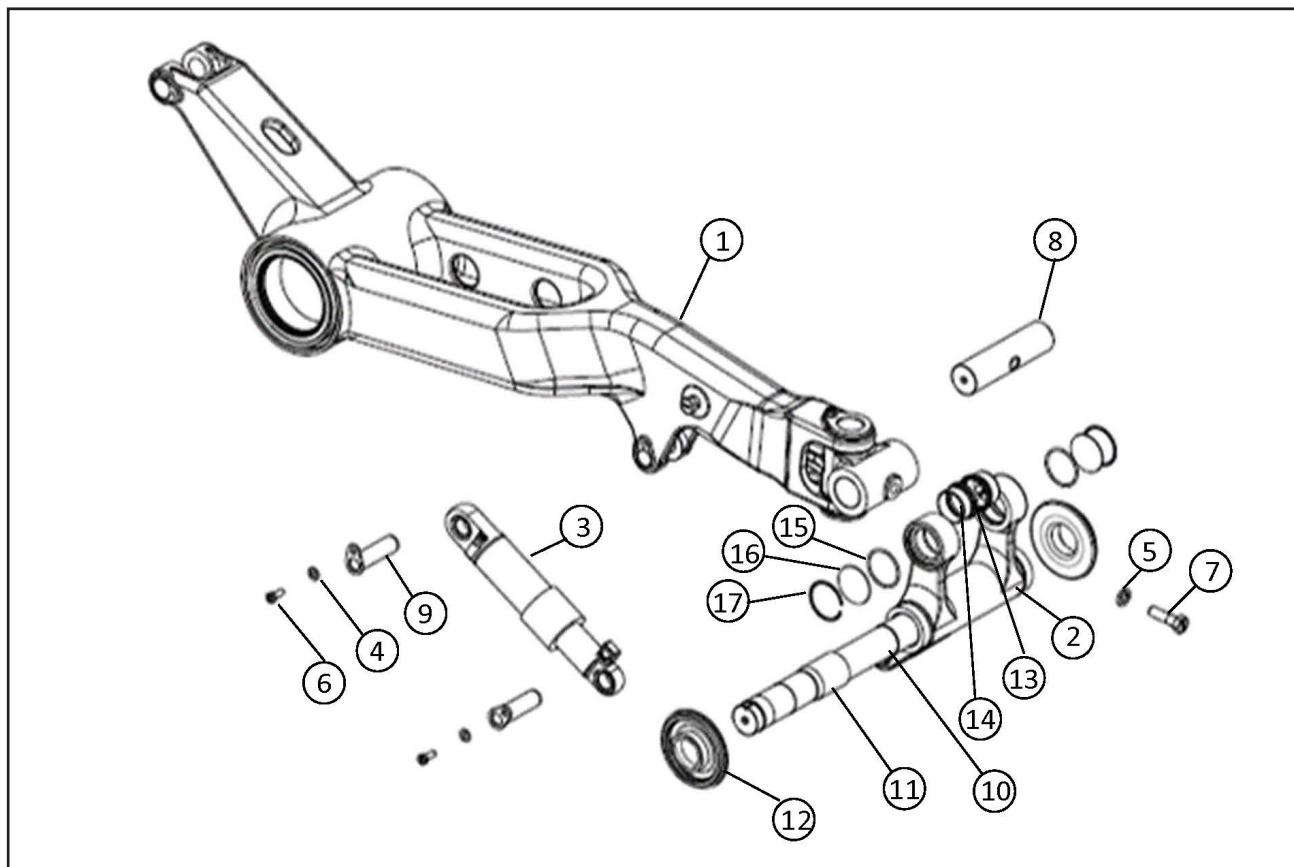
| REF. NO. | PART NO. | DESCRIPTION                                       | QTY PER ASSEMBLY |
|----------|----------|---|------------------|
| 1        | A0964    | ARM, FRONT IDLER                                  | 1                |
| 2        | A0975    | BUSHING, OSCILLATION PIVOT,(ID 190mm x 60mm,WIDTH | 2                |
| 3        | A0976    | SEAL, OSCILLATION PIVOT WIPER                     | 4                |
| 4        | A0971    | SHAFT, IDLER                                      | 1                |
| 5        | A0973    | CUP, IDLER SEAL                                   | 2                |

## 2.4 IDLER HUB ASSEMBLY



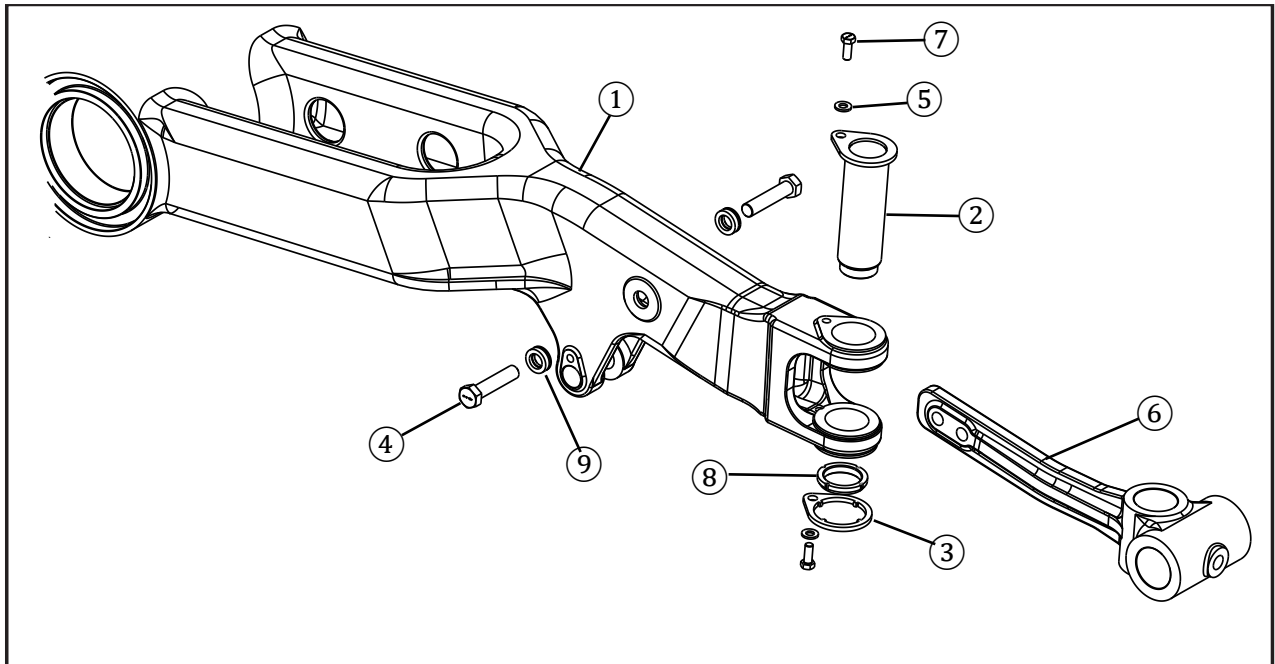
| REF. NO. | PART NO. | DESCRIPTION                                    | QTY PER ASSEMBLY |
|----------|----------|--|------------------|
| 1        | A0856    | SEAL, IDLER, METAL FACE, HNBR, O-RING STYLE    | 2                |
| 2        | A0532    | BEARING, (CUP & CONE), IDLER                   | 4                |
| 3        | A0742    | HUB, IDLER WHEEL                               | 2                |
| 4        | A0026    | WASHER, IDLER HUB THRUST                       | 2                |
| 5        | A0027    | WASHER, IDLER HUB LOCK                         | 2                |
| 6        | A0028    | NUT, IDLER HUB LOCK                            | 2                |
| 7        | A0739    | O-RING, DASH - 252, 50 SHORE A                 | 2                |
| 8        | A0842    | CAP, IDLER HUB, TRANSPARENT                    | 2                |
| 9        | A0605    | WASHER, M10 FLAT HARDENED ZINC                 | 10               |
| 10       | A0168    | BOLT, M10-1.5 X 30 GRADE 10.9 HEX, ZINC PLATED | 10               |
| 11       | A0117    | PLUG, SAE-8 FLUSH O-RING                       | 2                |
| 12       | A0973    | CUP, IDLER SEAL                                | 2                |

### 3.1 REAR IDLER ARM WITH TENSION ARM ASSEMBLY



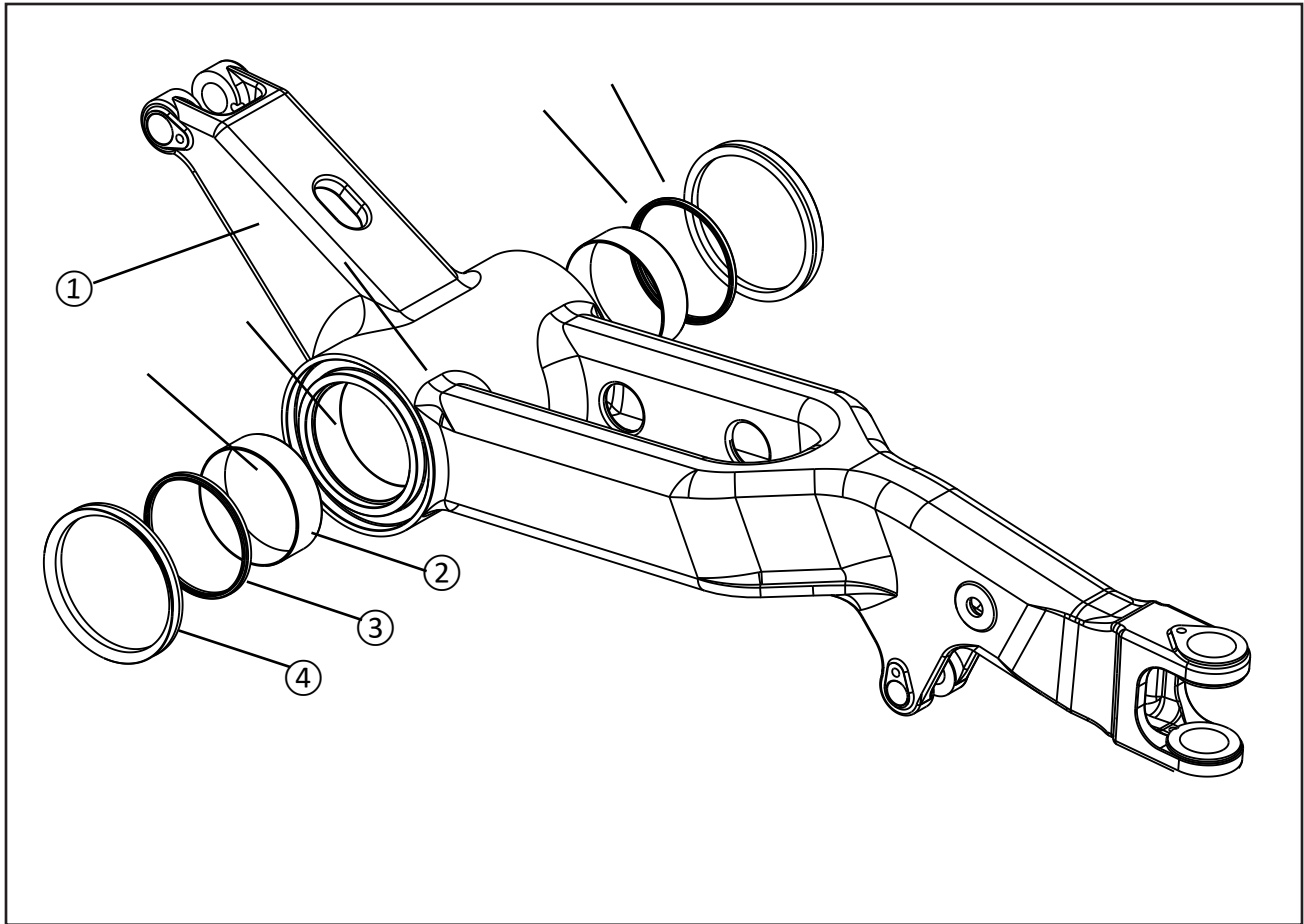
| REF. NO. | PART NO. | DESCRIPTION  | QTY PER MODULE |
|----------|----------|--|----------------|
| 1        |          | REAR ARM with ALIGNMENT ARM ASSEMBLY                 | 1              |
| 2        | A0966    | ARM, TENSION   | 1              |
| 3        | A0551B   | CYLINDER, MB HYDRAULIC, INTEGRATED ACCUMULATOR       | 1              |
| 4        | A0053    | WASHER, M14, SPECIAL LOCK                            | 2              |
| 5        | A0809    | WASHER, M24, SPECIAL LOCK                            | 1              |
| 6        | A0799    | BOLT, M14-2 X 35 GRADE 10.9                          | 2              |
| 7        | A0804    | BOLT, M24-3 X 80, GRADE 10.9                         | 1              |
| 8        | A0702    | PIN, CROSS BOLT, 75mm X 280mm                        | 1              |
| 9        | A0974    | PIN, CYLINDER TENSION, 40mm X 138mm                  | 2              |
| 10       | A0994    | TENSION ARM W/ IDLER SHAFT & SEAL CUPS- SERVICE ONLY | 1              |
| 11       | A0971    | SHAFT, IDLER   | 1              |
| 12       | A0973    | CUP, IDLER SEAL                                      | 2              |
| 13       | A0836    | BUSHING, 75 X 80 X 30, SOLID                         | 2              |
| 14       | A0689    | SEAL, 75 X 89 X 8                                    | 2              |
| 15       | A0846    | O-RING, DASH 340                                     | 2              |
| 16       | A0839    | CAP, 75mm FLAT                                       | 2              |
| 17       | A0847    | SNAP RING, 95mm X 0.99mm                             | 2              |

## 3.2 REAR IDLER ARM / ALIGNMENT ARM



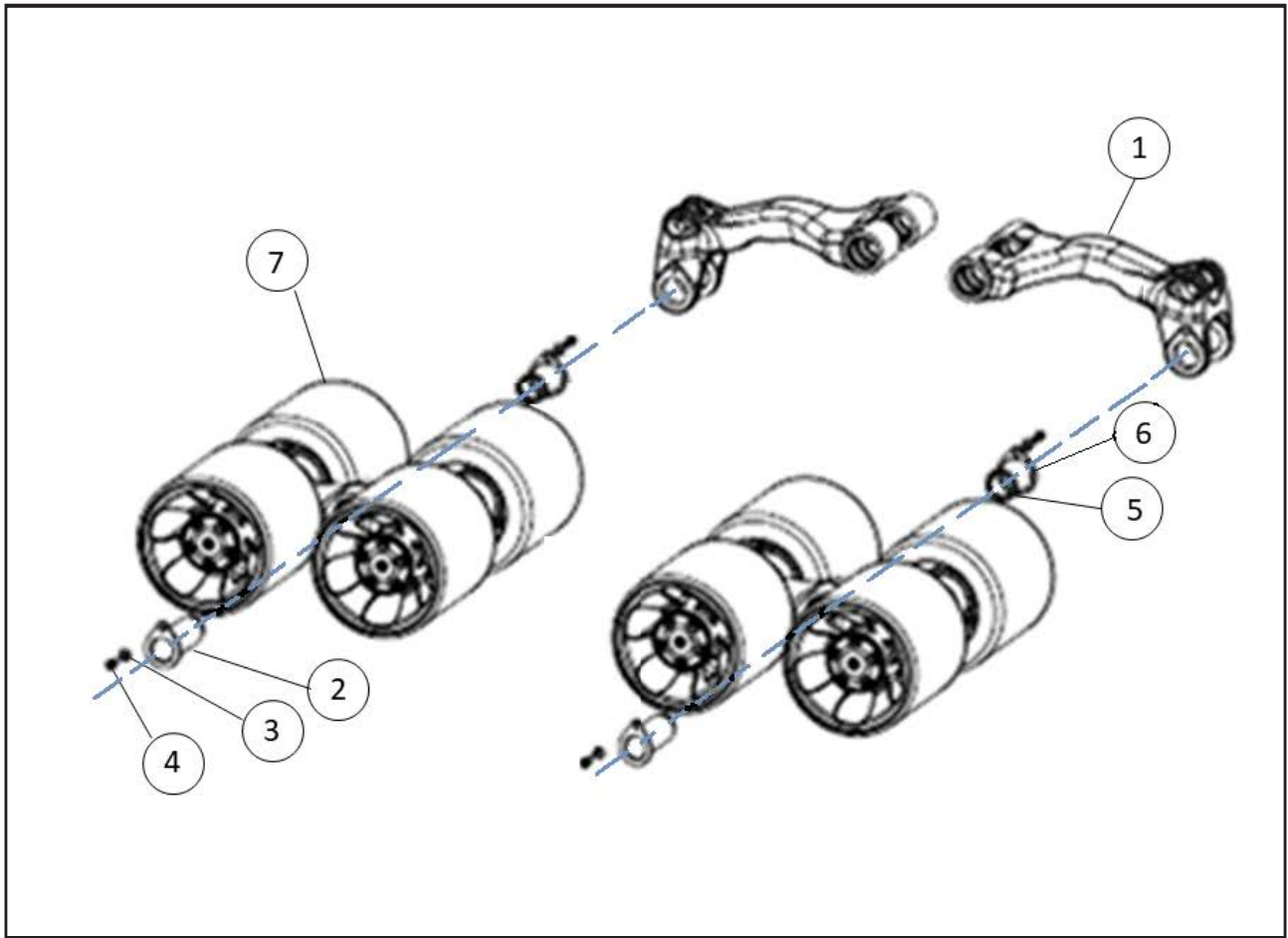
| REF. NO. | PART NO. | DESCRIPTION                         | QTY PER ASSEMBLY |
|----------|----------|-------------------------------------|------------------|
| 1        | A0965    | ARM , REAR IDLER                    | 1                |
| 2        | A0970    | PIN, BELT ALIGNMENT ARM             | 1                |
| 3        | A0972    | PIN, LOCKING RING                   | 1                |
| 4        | A0581    | BOLT, M24-3x110 GR 10.9 FULL THREAD | 2                |
| 5        | A0053    | WASHER, M14, SPECIAL LOCK           | 2                |
| 6        | A0967    | ARM, ALIGNMENT                      | 1                |
| 7        | A0799    | BOLT, M14-2 X 35, GRADE 10.9        | 2                |
| 8        | A0047    | NUT, WHEEL HUB LOCK #TN-13          | 1                |
| 9        | A1104    | WASHER, SPHERICAL, M24              | 2                |

### 3.3 REAR IDLER ARM BUSHINGS AND SEALS



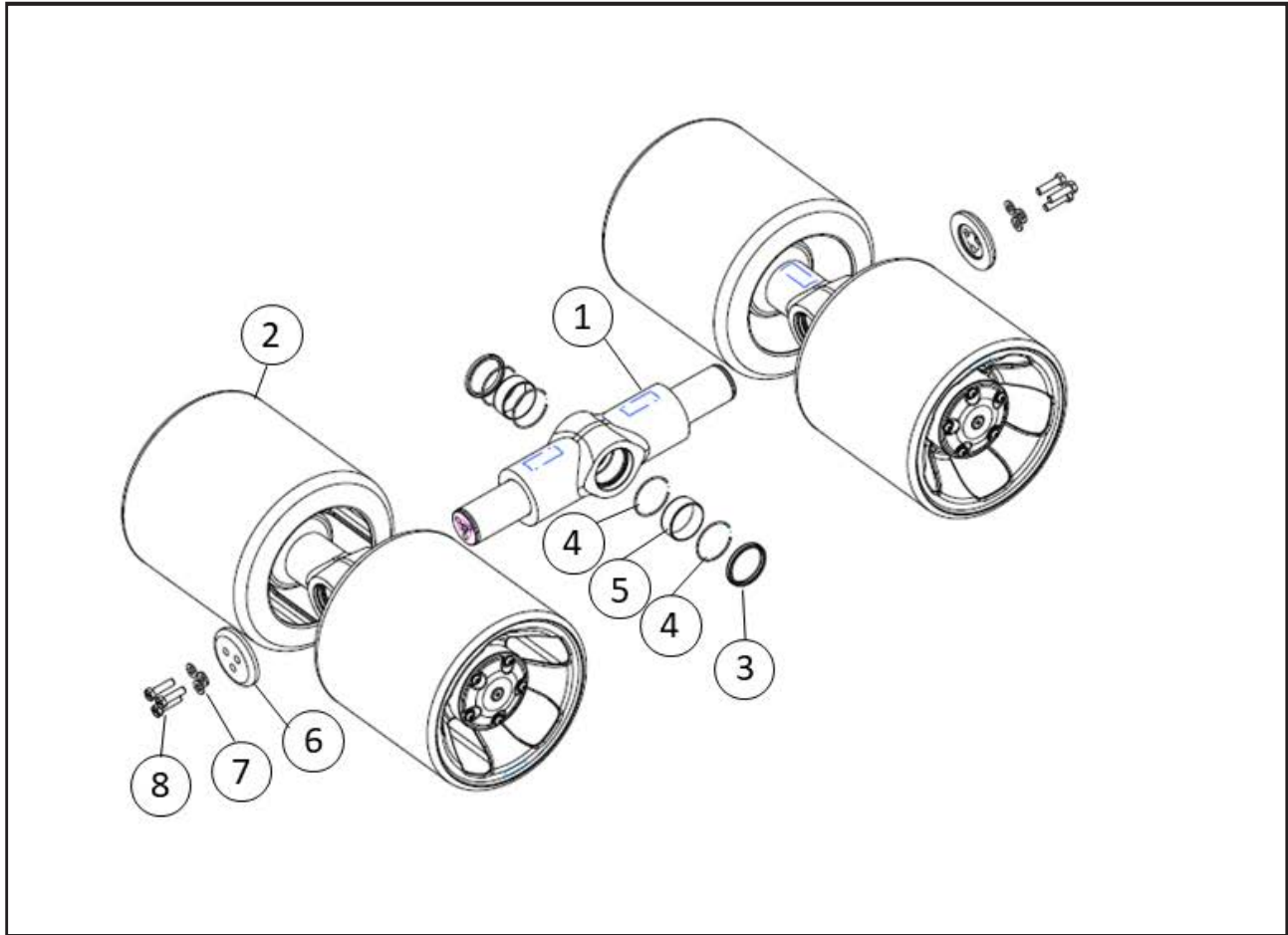
| REF. NO. | PART NO. | DESCRIPTION                                       | QTY PER ASSEMBLY |
|----------|----------|---|------------------|
| 1        | A0965    | ARM, REAR IDLER                                   | 1                |
| 2        | A0975    | BUSHING, OSCILLATION PIVOT, ID 190mm x 60mm WIDTH | 2                |
| 3        | A0976    | SEAL, OSCILLATION PIVOT WIPER                     | 2                |
| 4        | A0977    | SEAL, V RING, 255mm DIA                           | 2                |

## 4.1 LOWER UNDERCARRIAGE - BOGIE ASSEMBLY TO TRAIL ARM



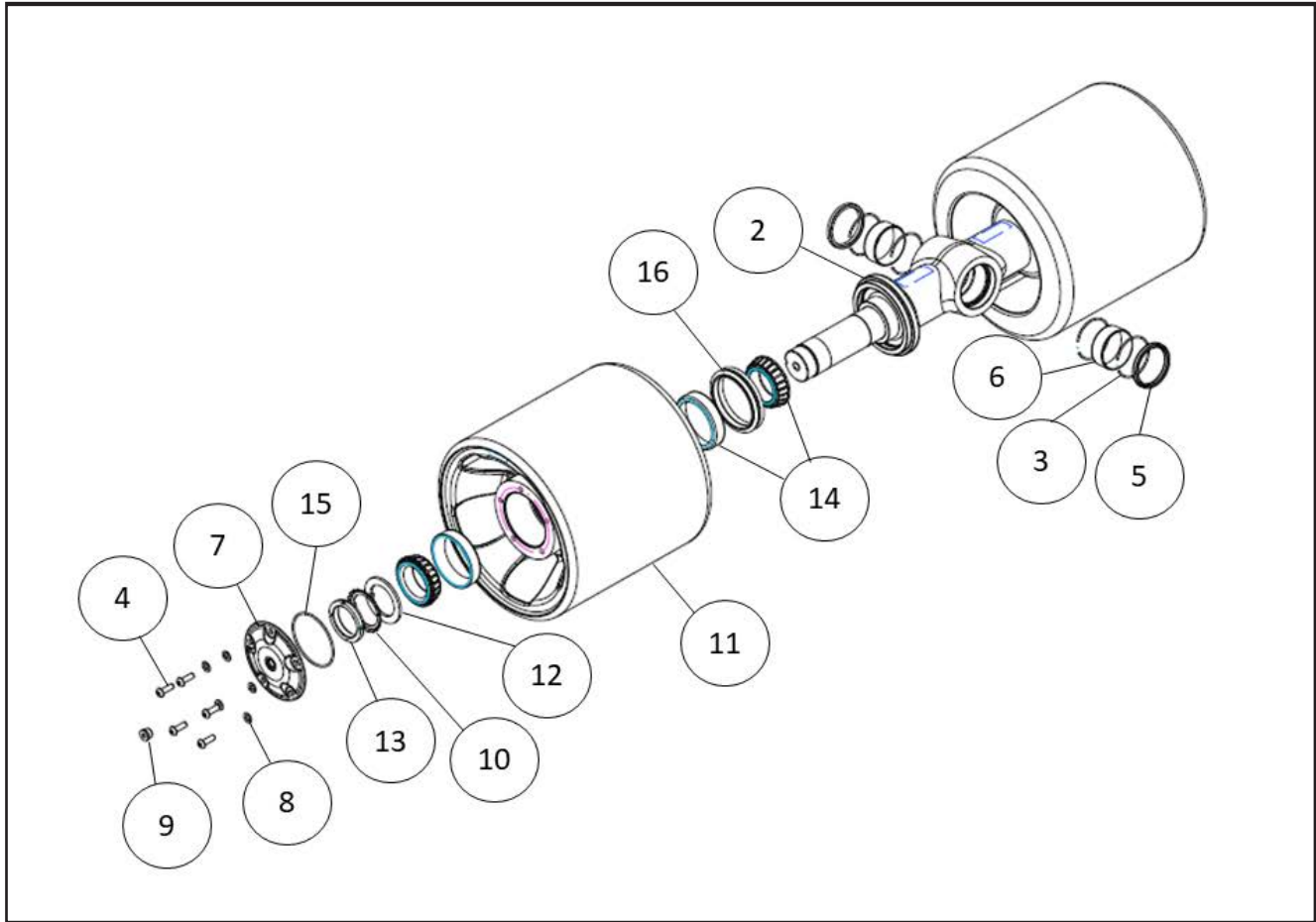
| REF. NO. | PART NO. | DESCRIPTION                  | QTY PER ASSEMBLY |
|----------|----------|------------------------------|------------------|
| 1        | A0978    | ARM, TRAIL                   | 1                |
| 2        | A1011    | PIN, WALKING BEAM CONNECTION | 2                |
| 3        | A0053    | WASHER, M14, SPECIAL LOCK    | 4                |
| 4        | A0799    | BOLT, M14-2 X 35 GRADE 10.9  | 4                |
| 5        | A0047    | NUT, LOCK, #TN-13            | 2                |
| 6        | A0972    | PIN, LOCKING RING            | 2                |
| 7        |          | BOGIE AXLE ASSEMBLY          | 2                |

## 4.2 BOGIE AXLES TO WALKING BEAM



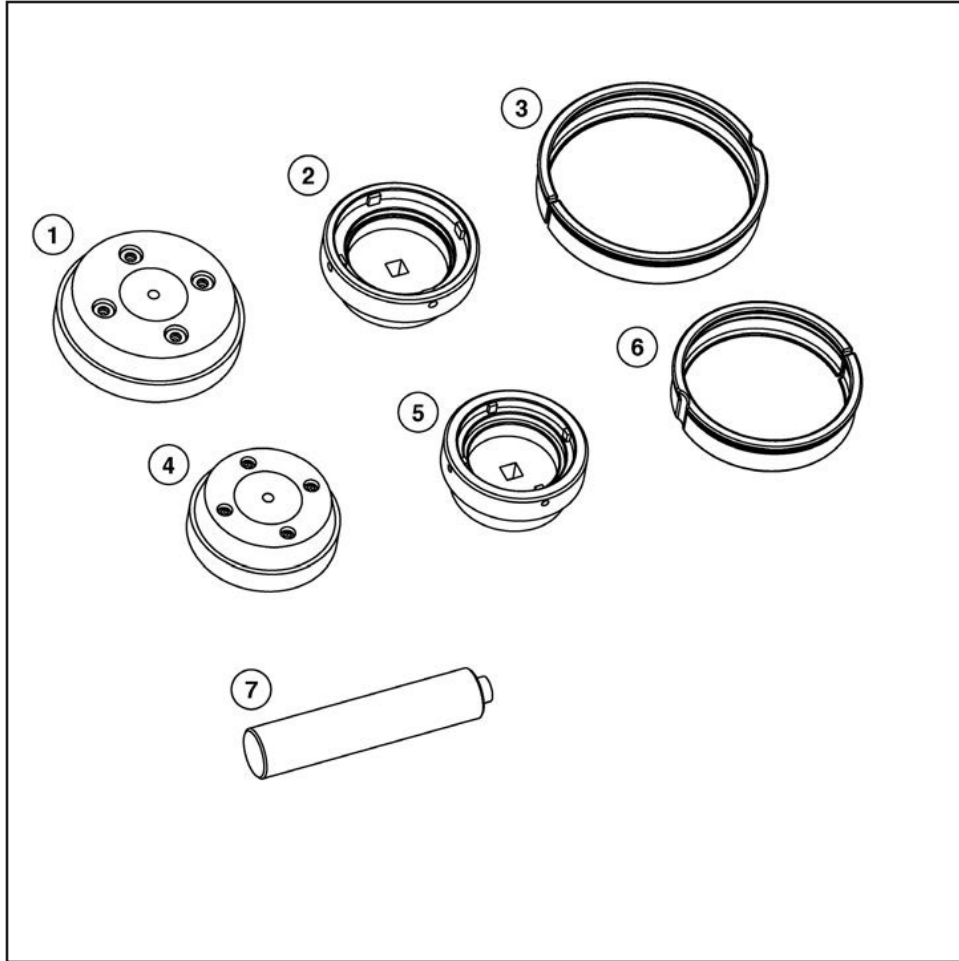
| REF. NO. | PART NO. | DESCRIPTION                                      | QTY PER ASSEMBLY |
|----------|----------|--|------------------|
| 1        | A0991    | BOGIE WALKING BEAM WITH SHAFTS ASSEMBLY, SERVICE | 1                |
| 2        |          | BOGGIE ROLL AXLE ASSEMBLY                        | 2                |
| 3        | A0689    | SEAL,75 X 89 X 8                                 | 2                |
| 4        | A1105    | RING, ROUND RETAINING, M80                       | 4                |
| 5        | A0836    | BUSHING, 75 X 80 X 30, SOLID                     | 2                |
| 6        | A0981    | RETAINER, BOGIE ROLL                             | 2                |
| 7        | A0053    | WASHER, M14, SPECIAL LOCK                        | 6                |
| 8        | A0805    | BOLT, M14-2 X 50 GRADE 10.9                      | 6                |

## 4.3 BOGIE ROLL AXLE ASSEMBLY



| ITEM | PART NUMBER | DESCRIPTION  | QTY PER ASSEMBLY |
|------|-------------|--|------------------|
| 1    | -           | BOGIE ROLL AXLE ASSEMBLY                           | 1                |
| 2    | A0928       | BOGIE SHAFT, HOUSING WITH SHAFTS ASSEMBLY, SERVICE | 1                |
| 3    | A1105       | RING, ROUND RETAINING, M80                         | 4                |
| 4    | A0168       | BOLT M10-1.5X30 GR 10.9, ZINC PLATED               | 10               |
| 5    | A0689       | SEAL, 75 x 89 x 8                                  | 2                |
| 6    | A0836       | BUSHING, 75 X 80 X 30, SOLID                       | 2                |
| 7    | A0841       | CAP, BOGIE HUB, TRANSPARENT                        | 2                |
| 8    | A0605       | WASHER, M10 FLAT HARDENED, ZINC                    | 10               |
| 9    | A0117       | PLUG, SAE-8 FLUSH, O-RING                          | 2                |
| 10   | A0046       | WASHER, BOGIE HUB LOCK                             | 2                |
| 11   | A0988       | WHEEL, BOGIE, 42"                                  | 2                |
| 12   | A0045       | WASHER, BOGIE HUB THRUST                           | 2                |
| 13   | A0047       | NUT, BOGIE HUB LOCK                                | 2                |
| 14   | A0533       | BEARING (CUP & CONE), BOGIE                        | 4                |
| 15   | A0720       | O-RING, DASH-244, 50 SHORE A                       | 2                |
| 16   | A0858       | SEAL BOGIE, METAL FACE SEAL, HNBR, O-RING STYLE    | 2                |

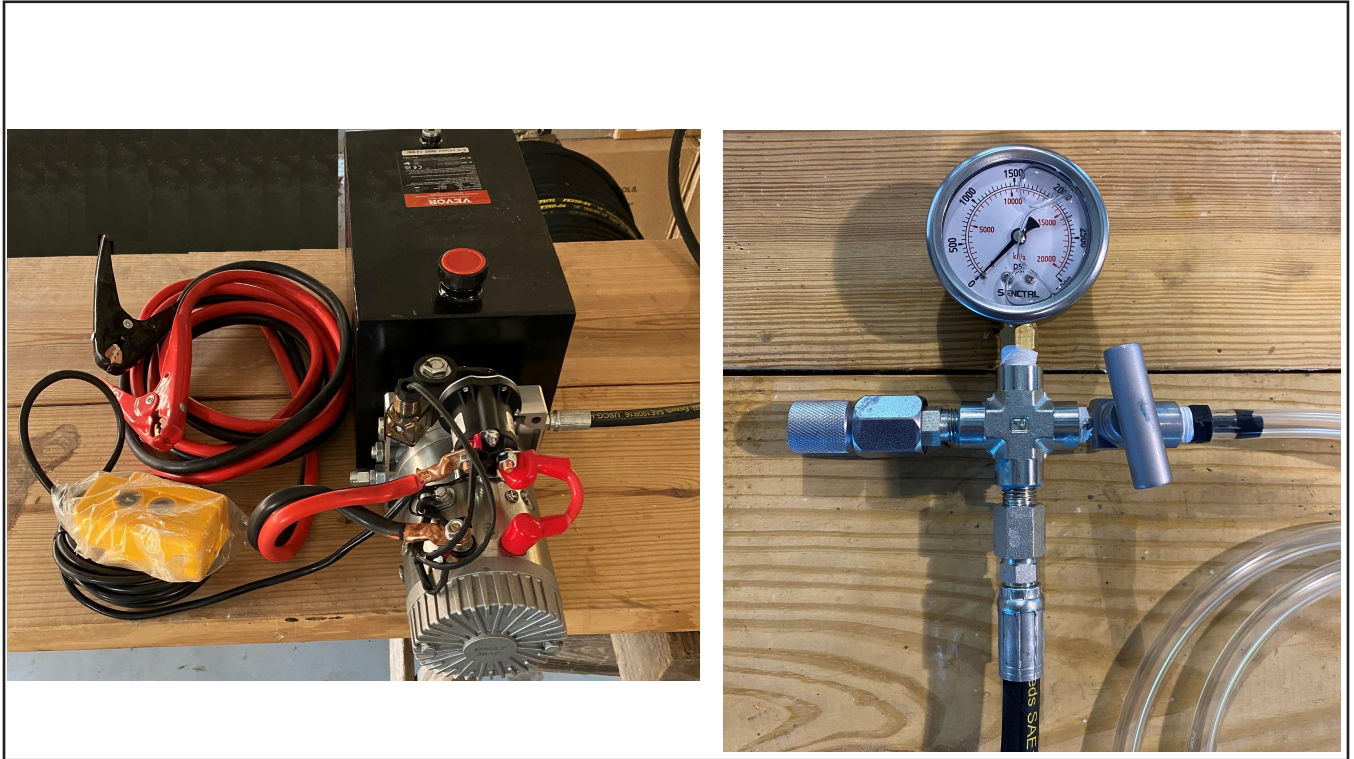
## 5.0 SERVICE TOOLS - BEARINGS & SEALS



| REF. NO. | PART NO. | DESCRIPTION                         | QTY |
|----------|----------|-------------------------------------|-----|
| 1        | T0004    | TOOL, IDLER HUB BEARING CUP         | 1   |
| 2        | T0041    | TOOL, IDLER WHEEL LOCK NUT          | 1   |
| 3        | T0100    | TOOL, A0856 IDLER SEAL INSTALLATION | 1   |
| 4        | T0005    | TOOL, BOGIE HUB BEARING CUP         | 1   |
| 5        | T0040    | TOOL, BOGIE WHEEL LOCK NUT          | 1   |
| 6        | T0101    | TOOL, A0858 BOGIE SEAL INSTALLATION | 1   |
| 7        | T0006    | TOOL, BEARING CUP DRIVER            | 1   |

## 5.1 SERVICE TOOLS - CHARGE KIT

---

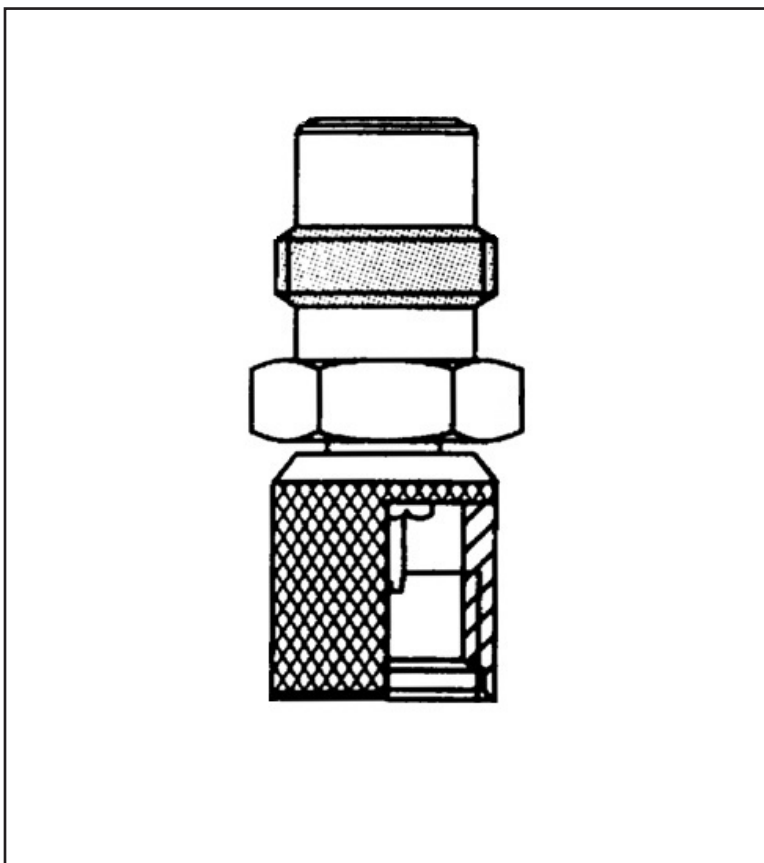


| REF. NO. | PART NO. | DESCRIPTION  | QTY PER ASSEMBLY |
|----------|----------|--|------------------|
| 1        | T0200    | KIT, FREE STANDING HYDRAULIC CHARGE KIT & CONTROLS | 1                |

## 5.2 SERVICE TOOLS - NITROGEN CHARGE PORT

---

### NITROGEN CHARGE PORT



| REF. NO. | PART NO. | DESCRIPTION                        | QTY |
|----------|----------|------------------------------------|-----|
| 1        | A0111    | ADAPTER, 1215 NITROGEN CHARGE PORT | 1   |