

Glide Ride Capture Plate Kit 6036

AUTO SLIDE 5TH WHEEL CAPTURE PLATE FOR DEMCO GLIDE RIDE PIN BOX



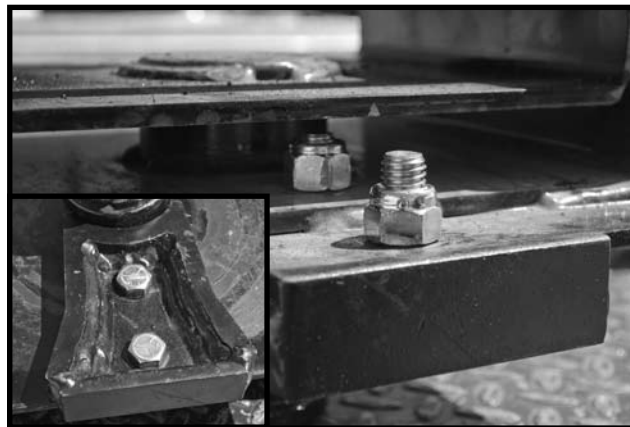
1. Remove 1/2" bolt from pin plate using 3/4" wrench or socket. Using a flat screw driver or thin chisel and hammer, tap between pin plate and Glide Ride box on bottom to get pin plate started coming out. Pry pin plate out by going from side to side by the 1" pin until pin plate can be totally removed. Be sure to support under kingpin base before removing pin plates. Lower kingpin base out of kingpin box.



2. Center capture plate behind kingpin by pushing plate against base shoe. Clamp in place



3. While using capture plate as template, center punch hole locations. Drill two 1/2" holes into glide ride base.



4. Fasten capture plate to glide ride base using the two 1/2" x 1-1/2" bolts and nylon lock nuts. Torque to 85 ft-lbs.



5. Inspect links and base for excessive wear and replace parts if needed. Lift kingpin base into pin box, lining links with holes in pin box. Install pin plates by tapping from side to side. Apply thread lock to end of bolt previously removed and fasten plate. Torque to 85 ft-lbs.

DEMCO • 4010 320th Street • P.O. Box 189 • Boyden, IA 51234

PH: (712) 725-2311 • Toll Free: 1-800-543-3626 • FAX: (712) 725-2380 www.demco-products.com