



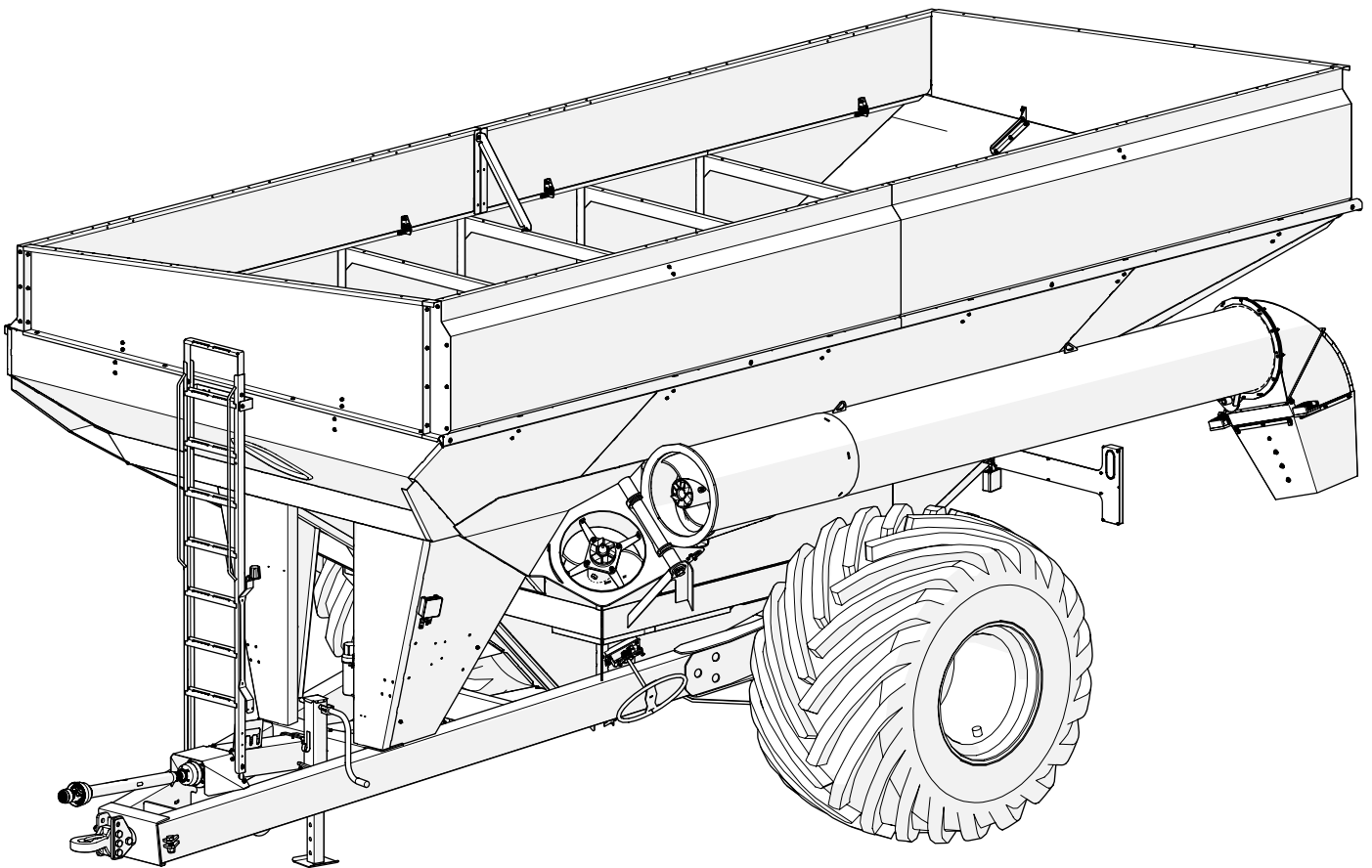
*Doing Our Best to Provide You the Best*

AG20054, Rev 5  
9/25

---

**GRAIN CART - SINGLE AUGER**  
**1300SA & 1500SA**

---



**PARTS MANUAL**

# Table of Contents

---

## Overview

Table of Contents .....	2
Grain Cart Information .....	2
Replacement Parts.....	2

## Main Assembly

Lower Auger Door Opener .....	3
Hitch and Drive Line Assembly.....	4
Front Tongue Area Assembly.....	5
Auger Assembly .....	6-7
Internal Assembly.....	8
Rear Light Pod Assembly.....	9
Extensions .....	10

## Axle Assembly

Track Axle Assembly.....	11
Wheel Axle Assembly .....	12

## Spindle/Hub Assembly

Spindle/Hub - 10 Bolt and 20 Bolt .....	13
-----------------------------------------	----

## Schematics

Electrical Schematic .....	14
Scale Schematic.....	15
Hydraulic Schematic.....	16
Backlit Pendant Hydraulic Schematic.....	17

## Hydraulic Drive Assembly

Assembly .....	18
----------------	----

## Bolt Torque

Information.....	19
------------------	----

## Grain Cart Information

This parts manual is for Demco Grain Carts Models: 1300 and 1500 Production 2022 - Current

Record your Serial Number, Date of Purchase and Dealer for reference

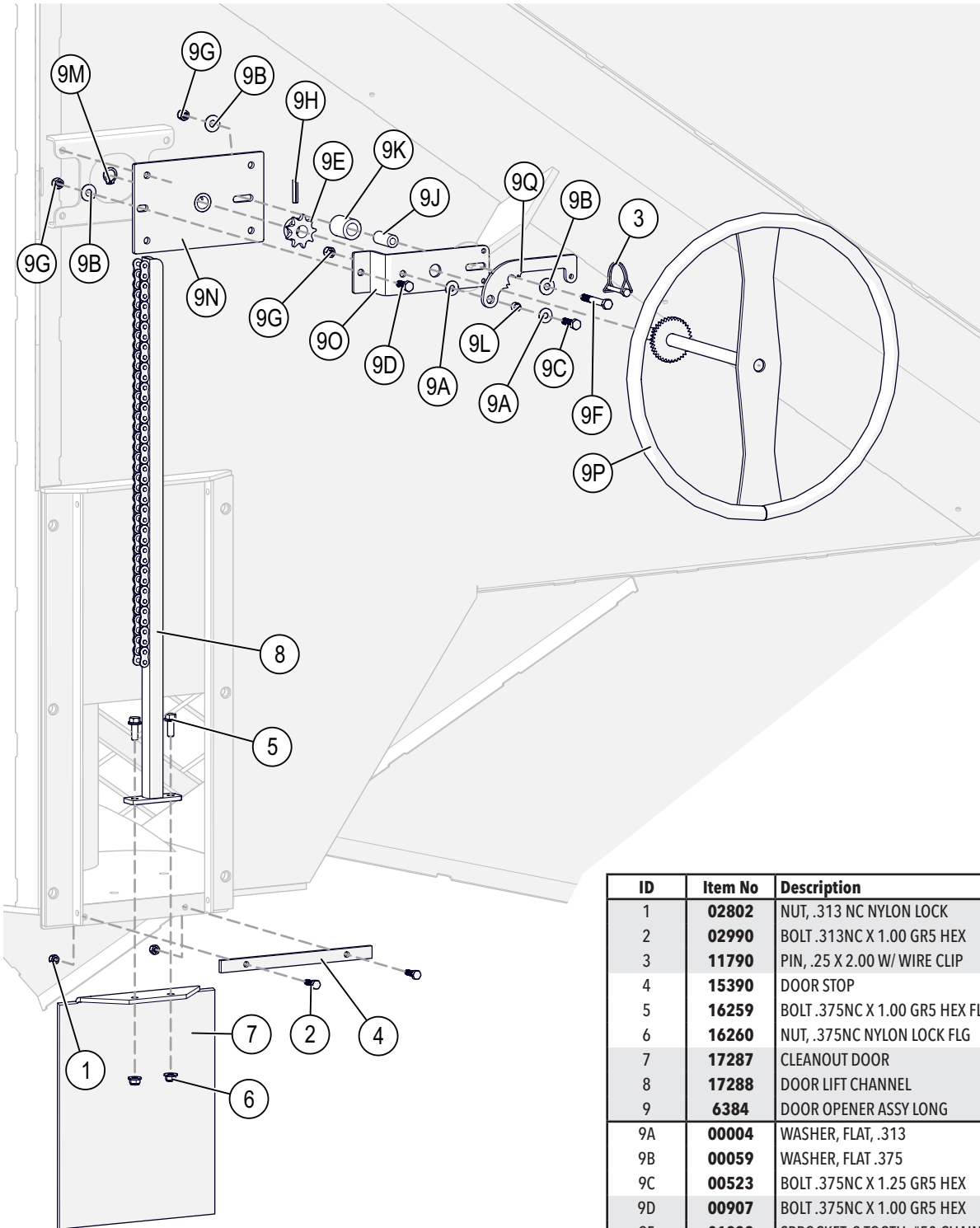
Serial Number \_\_\_\_\_

Date of Purchase \_\_\_\_\_

Dealer Information \_\_\_\_\_

## Replacement Parts

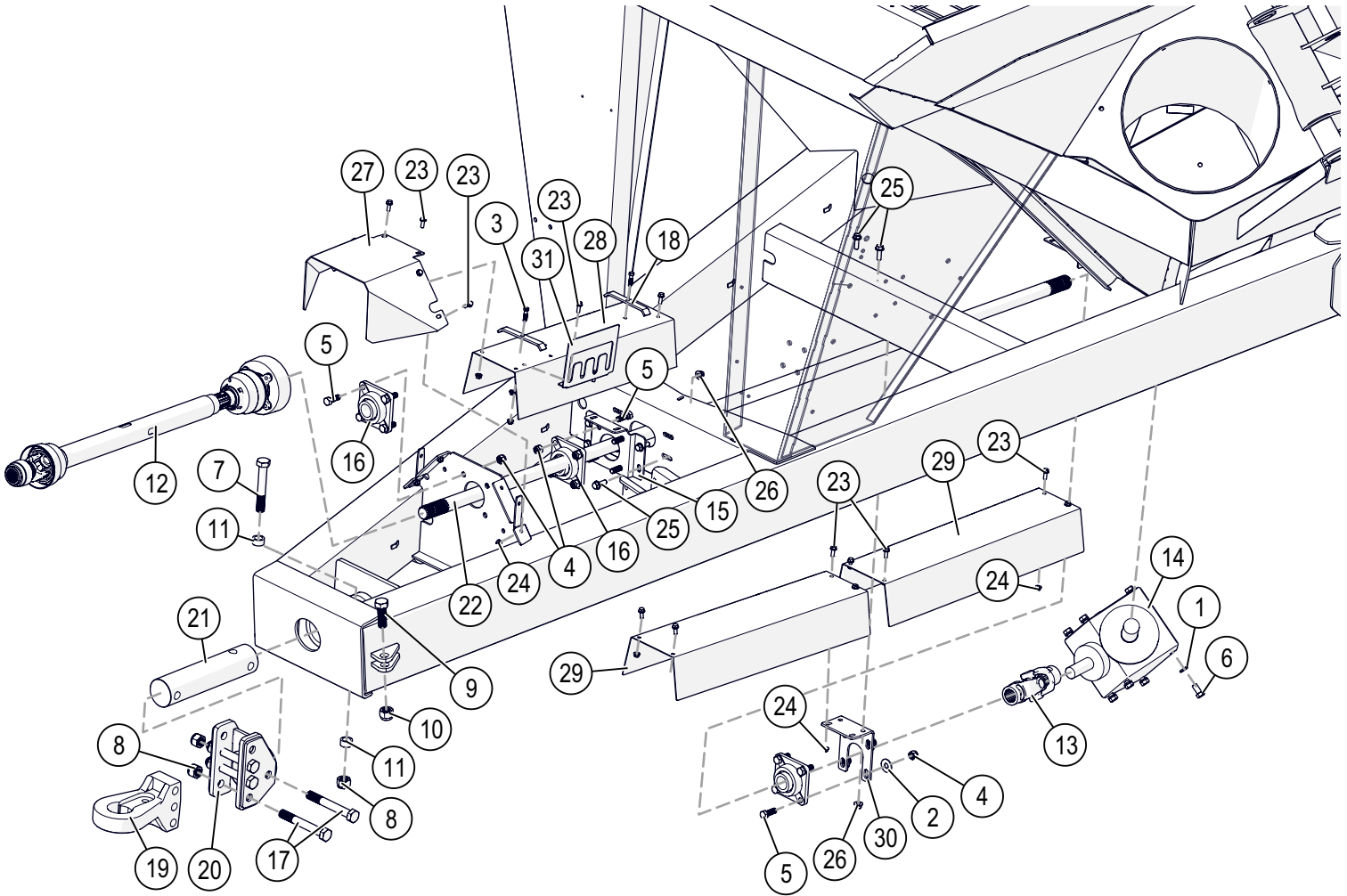
When ordering replacement parts provide the Unit Color and Item Number.



ID	Item No	Description	Qty
1	02802	NUT, .313 NC NYLON LOCK	2
2	02990	BOLT .313NC X 1.00 GR5 HEX	2
3	11790	PIN, .25 X 2.00 W/ WIRE CLIP	1
4	15390	DOOR STOP	1
5	16259	BOLT .375NC X 1.00 GR5 HEX FLG	6
6	16260	NUT, .375NC NYLON LOCK FLG	2
7	17287	CLEANOUT DOOR	1
8	17288	DOOR LIFT CHANNEL	1
9	6384	DOOR OPENER ASSY LONG	1
9A	00004	WASHER, FLAT, .313	2
9B	00059	WASHER, FLAT .375	3
9C	00523	BOLT .375NC X 1.25 GR5 HEX	1
9D	00907	BOLT .375NC X 1.00 GR5 HEX	1
9E	01332	SPROCKET, 9 TOOTH #50 CHAIN	1
9F	02166	BOLT .375NC X 2.75 GR5 HEX	1
9G	02592	NUT, .375NC NYLON LOCK	3
9H	02849	ROLL PIN, .31 X 1.38	1
9I	04642	ZERK, GREASE, .25 UNF SF	1
9J	05363	BUSHING, INNER ROLLER	1
9K	05364	BUSHING, OUTER ROLLER	1
9L	13668	BUSHING	1
9M	14750	SNAP RING EXT F/ .75SHAFT	1
9N	15392	OPENER PLATE	1
9O	15395	OPENER BRACKET	1
9P	17289	DOOR LIFT WHEEL LONG	1
9Q	18466	DOOR LATCH	1

When ordering replacement parts please provide the Unit Color and Item Number

# Hitch and Drive Line Assembly

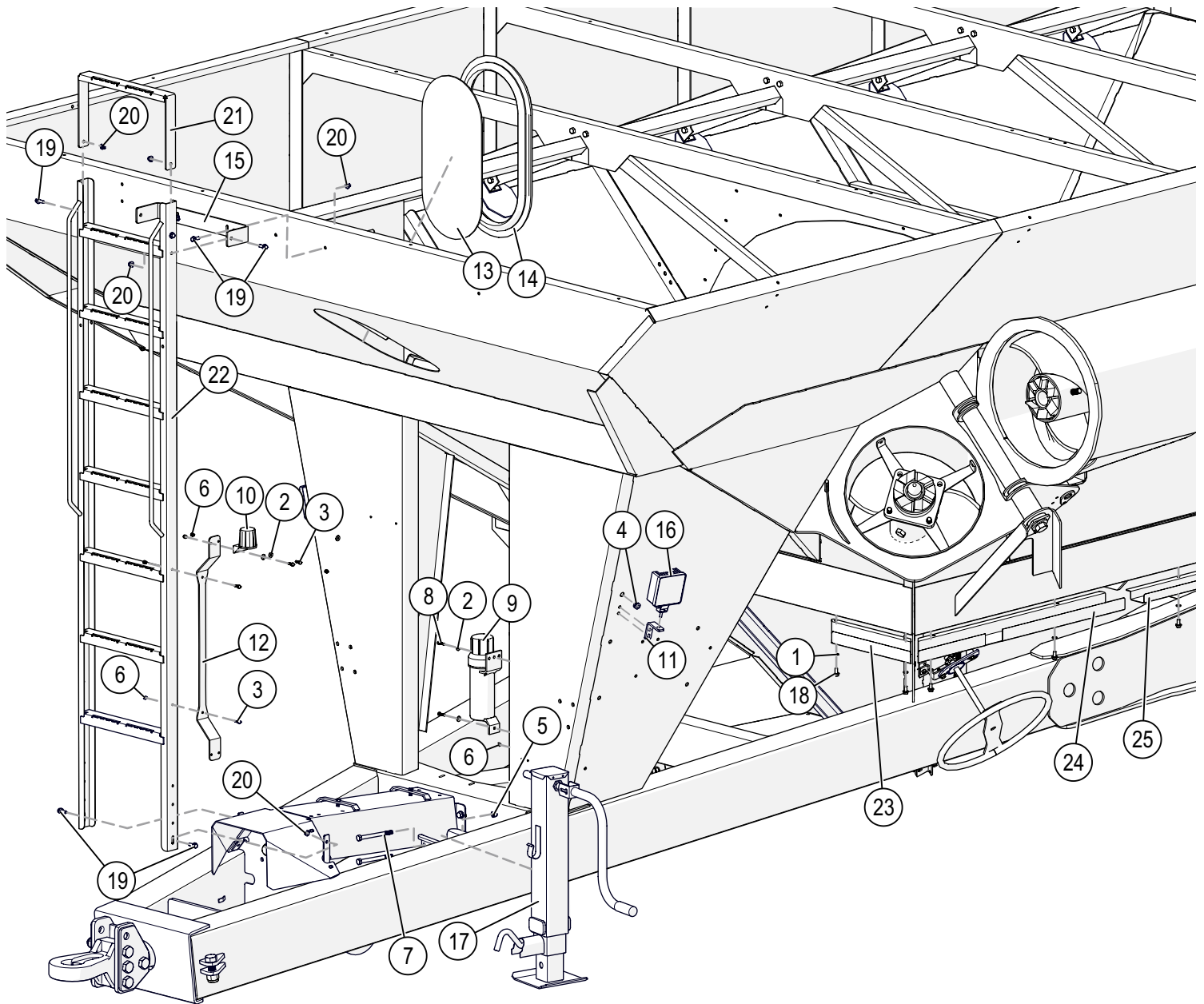


ID	Item No	Description	Qty
1	00248	WASHER SPRING LOCK 0.625	8
2	00477	WASHER, FLAT, .625	4
3	00914	BOLT .375NC X 1.50 GR5 HEX	2
4	02587	NUT, .625 NC NYLON LOCK	12
5	03698	BOLT .625NC X 1.75 GR5 HEX	12
6	05366	BOLT .625NC X 1.25 GR5 HEX	8
7	09454	BOLT 1.0NF X 6.50 GR8 HEX	1
8	09455	NUT, 1.0NF NYLON INSERT HEX	5
9	12323	HEX BOLT 1.00-8UNC X 3.00	1
10	12477	1"-8 UNC NYLON INSERT NUT	1
11	13321-95	HITCH BOLT BUSHING	2
12	13325	PTO SHAFT W/1.75-20 SPLINE, AUTO CLUTCH 12K, 14K	1
13	13326	UNIVERSAL JOINT 1-3/4"-20 TO 1-3/4"-6	1
-	13475	PTO TRACTOR HALF	-
14	13339	COMER IND. GEARBOX	1
-	17572-30	COMER GEARBOX MOUNT BLACK	-
-	17562	SUPERIOR GEARBOX	-
-	17573-30	SUPERIOR GEARBOX MOUNT BLACK	-
-	15911	SEAL DOUBLE LIP COMER GEARBOX OUT SHAFT	-
-	15912	SEAL DOUBLE LIP COMER GEARBOX IN SHAFT	-
15	13347	BEARING MOUNT	1

ID	Item No	Description	Qty
16	13411	BEARING 1.75" 4-BOLT FLANGE	3
17	13510	BOLT 1.0NF X 7.50 GR8 HEX	4
18	13575	HOSE KEEPER, 4-6 HOSES	2
19	13979	PERFECT HITCH 3 BOLT CAT 4/5	1
20	13982	HITCH CHANNEL MOUNT	1
21	14014	PIN HITCH 3.75 OD	1
22	14918	DRIVE SHAFT, 20 SPLINE	1
23	16259	BOLT .375NC X 1.00 GR5 HEX FLG	18
24	16260	NUT, .375NC NYLON LOCK FLG	20
25	16589	BOLT .50NC X 1.50 GR5 HEX FLANGE	6
26	16590	NUT, .50NC LOCK, NY. INSERT FLANGE	6
27	17282	PTO SHAFT COVER/STEP	1
28	17284	HOSE HOLDER	1
29	17458	PTO SHIELD FRONT	1
30	17459	PTO SHIELD REAR	2
31	17463	BEARING MOUNT	1

When ordering replacement parts please provide the Unit Color and Item Number

# Front Tongue Area Assembly

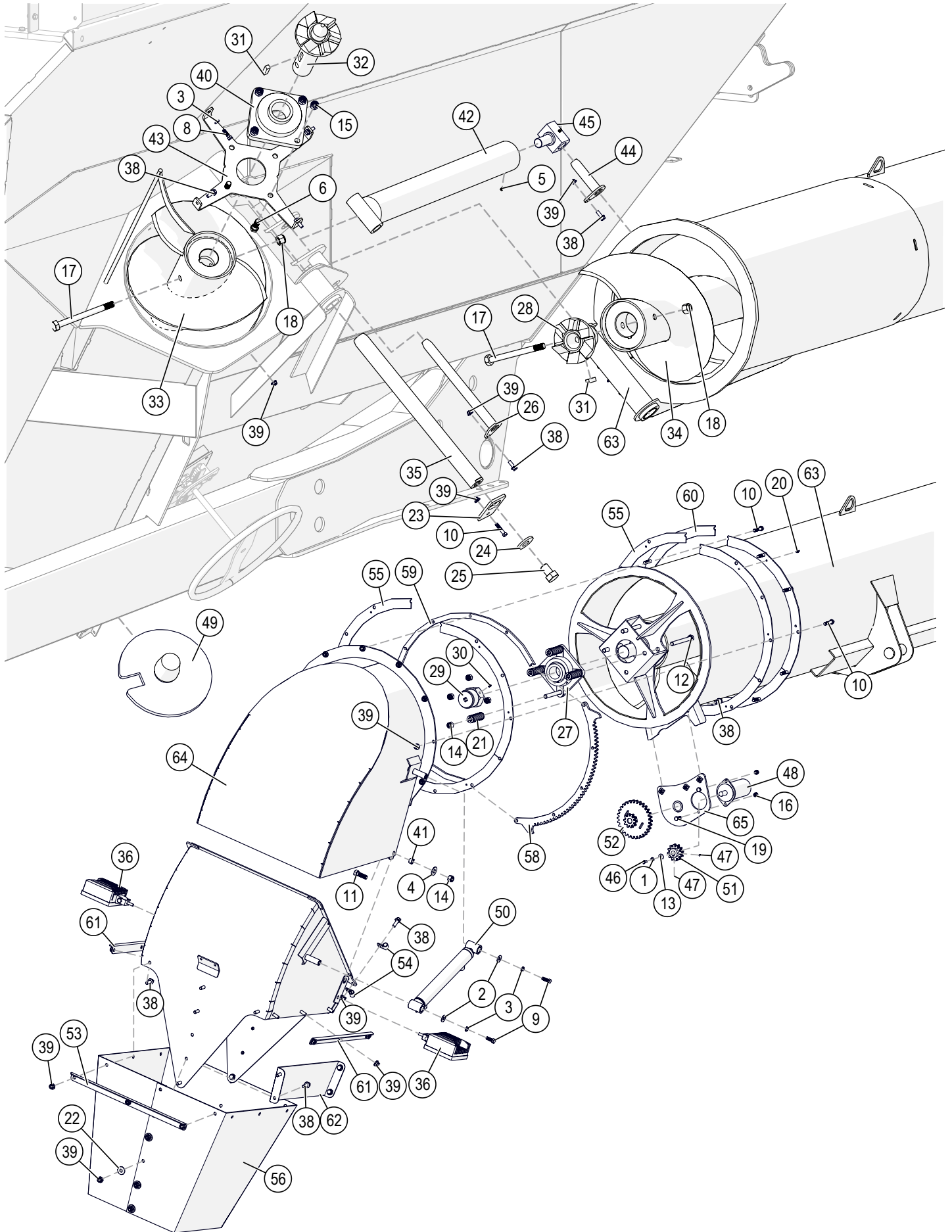


ID	Item No	Description	Qty
1	00060	.375 LOCKWASHER	6
2	00214	WASHER, FLAT, .25	4
3	01076	BOLT .25NC X .75 GR5 HEX	4
4	01863	GROMMET .625 OD X .375 ID X .25 THK	2
5	02178	NUT, .50NC LOCK, NY. INSERT	2
6	02772	NUT, .25NC LOCK NYLON INSERT	6
7	04053	BOLT .50NC X 5.50 GR5 HEX	2
8	04055	BOLT .25NC X 1.00 GR5 HEX	2
9	10241	CANISTER	1
10	10277	ELECTRICAL PLUG HOLDER	1
11	12555	LIGHT BRACKET	2
12	13501	HOSE WRAP BRACKET	1

ID	Item No	Description	Qty
13	14361	WINDOW GRAVITY FLOW BOX	2
14	14362	WINDOW GASKET SEAL	2
15	14922	UPPER LADDER BRACKET F/1252 GC	1
16	14926	LIGHT WORK LED 12V-36V	2
17	16243	AG JACK, WELDED	1
18	16258	BOLT .375NC X .75 GR5 HEX FLG	6
19	16259	BOLT .375NC X 1.00 GR5 HEX FLG	8
20	16260	NUT, .375NC NY LOCK FLANGE	8
21	16350	LADDER TOP CHANNEL	1
22	17295	LADDER F/ 1000 & 1100 GC	1
23	17314	HOSE HOLDER FRONT	1
24	17460	HOSE HOLDER FRONT REAR	1
25	17461	HOSE HOLDER REAR	1

When ordering replacement parts please provide the Unit Color and Item Number

# Auger Assembly



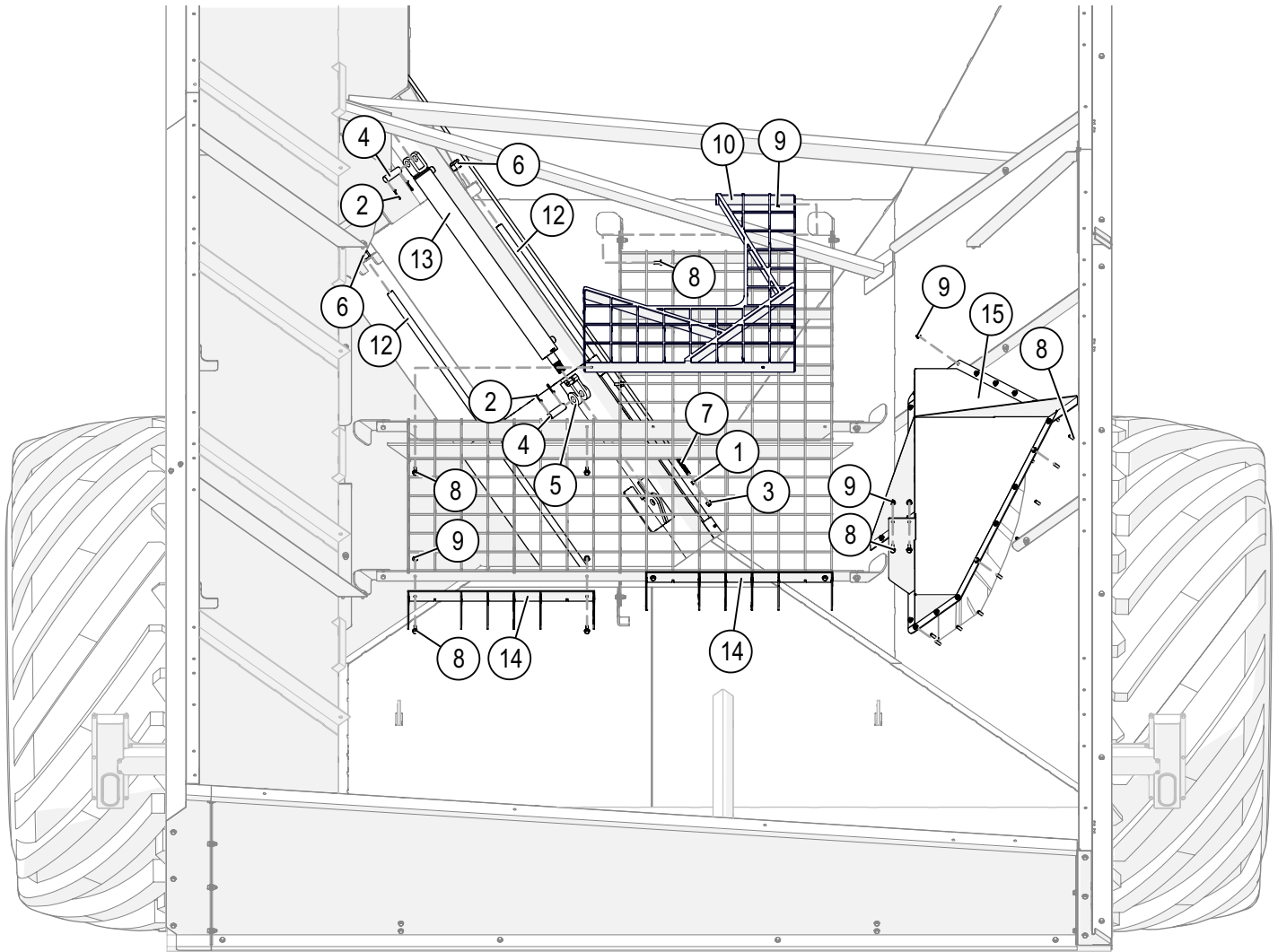
When ordering replacement parts please provide the Unit Color and Item Number

ID	Item No	Description	Qty
1	<b>00057</b>	WASHER, .25 SPRING LOCK	1
2	<b>00059</b>	WASHER, FLAT .375	2
3	<b>00060</b>	.375 LOCKWASHER	3
4	<b>00085</b>	.50 FLAT WASHER	2
5	<b>00087</b>	SET SCREW .313NC X .313 SOCKET HEAD	1
6	<b>00290</b>	BOLT .625NC X 2.00 GR5 HEX	4
8	<b>00523</b>	BOLT .375NC X 1.25 GR5 HEX	1
9	<b>00907</b>	BOLT .375NC X 1.00 GR5 HEX	2
10	<b>00908</b>	BOLT .375NC X 1.75 GR5 HEX	13
11	<b>01254</b>	BOLT .50NC X 1.50 GR5 HEX	2
12	<b>01975</b>	BOLT .50NC X 5.00 GR5 HEX	4
13	<b>02002</b>	WASHER, FLAT, .25	1
14	<b>02178</b>	NUT, .50NC LOCK, NY. INSERT	6
15	<b>02587</b>	NUT, .625 NC NYLON LOCK	4
16	<b>02802</b>	NUT, .313 NC NYLON LOCK	2
17	<b>02851</b>	.75NC X 8.50 GR5 HEX BOLT	2
18	<b>02961</b>	NUT, .75NC LOCK NYLON INSERT	2
19	<b>02990</b>	BOLT .313NC X 1.00 GR5 HEX	2
20	<b>04642</b>	ZERK, GREASE, .25 UNF SF	6
21	<b>09168</b>	SPRING, COMPRESSION	4
22	<b>09229</b>	WASHER, FENDER, 10MM	10
23	<b>13010</b>	AUGER PIN PLATE	1
24	<b>13011-95</b>	AUGER PIN WASHER	1
25	<b>13012</b>	1.0"-8NC X 1.50 HEX BOLT GR5	1
26	<b>13340-95</b>	LOWER HYD CYL PIN	1
27	<b>13411</b>	BEARING 1.75" 4-BOLT FLANGE	1
28	<b>13414</b>	DRIVE CASTING OUTER W/ KEYWAY	1
29	<b>13424</b>	NUT SPACER NUT	1
30	<b>13521</b>	SET SCREW .25NC X .375 SOCKET CUP POINT	1
31	<b>13538</b>	.50 x .50 x 1.75" KEY	2
32	<b>14110</b>	INNER DRIVE CASTING	1
33	<b>14861</b>	INNER AUGER, 18.75"	1
-	<b>17437-61</b>	CHROME AUGER FLIGHTING INNER	-

ID	Item No	Description	Qty
34	<b>14862</b>	OUTER FLIGHTING	1
-	<b>17438-61</b>	CHROME AUGER FLIGHTING OUTER	-
35	<b>14900</b>	AUGER PIN F/ 1252	1
36	<b>14926</b>	LIGHT WORK LED 12V-36V	2
37	<b>14937</b>	INNER DOOR INDICATOR	1
38	<b>16259</b>	BOLT .375NC X 1.00 GR5 HEX FLG	30
39	<b>16260</b>	NUT, .375NC NY LOCK FLANGE	40
40	<b>16414</b>	2.5" IPTCI BEARING	1
41	<b>16571</b>	DOOR BUSHING	2
42	<b>17104</b>	HYD CUSHION CLY 3.50" X 24.00"	1
43	<b>17307</b>	BEARING MOUNT PLATE 20" AUGER	1
44	<b>17309-95</b>	UPPER CYLINDER PIN 1.25	1
45	<b>17310</b>	HYDRAULIC CYLINDER END SMALL	1
46	<b>17758</b>	BOLT .25NF X .75 GR5 HEX	1
47	<b>18350</b>	SET SCREW 10-24 X .25 SOCKET CUP POINT	2
48	<b>18528</b>	HYD MOTOR BMMZ 50	1
49	<b>18564</b>	LOWER DRIVE PLATE	1
50	<b>18596</b>	CYLINDER ASSEMBLY, 1.50 X 8, .75 ROD	1
51	<b>18598</b>	DRIVE GEAR	1
52	<b>18599</b>	INTERMEDIATE GEAR	1
53	<b>18613</b>	SIDE STRAP SUPPORT	2
54	<b>18615</b>	HOSE CLAMP F/.25 HYD HOSE	4
55	<b>18616</b>	PIVOT SHIM	6
56	<b>18617</b>	RUBBER EXTENSION 20	1
57	<b>18663</b>	END CHUTE	1
58	<b>18664</b>	GEAR SEGMENT	1
59	<b>18665</b>	PIVOT SPACER 20	2
60	<b>18666</b>	CLAMP PLATE 20	3
61	<b>18667</b>	SIDE STRAP SUPPORT 20	2
62	<b>18669</b>	20" SPOUT DIVIDER	1
63	<b>18671</b>	OUTER AUGER TUBE 20" 4-WAY	1
64	<b>18672</b>	ROTATIONAL CHUTE 20"	1
65	<b>18674</b>	MOTOR MOUNT 20	1

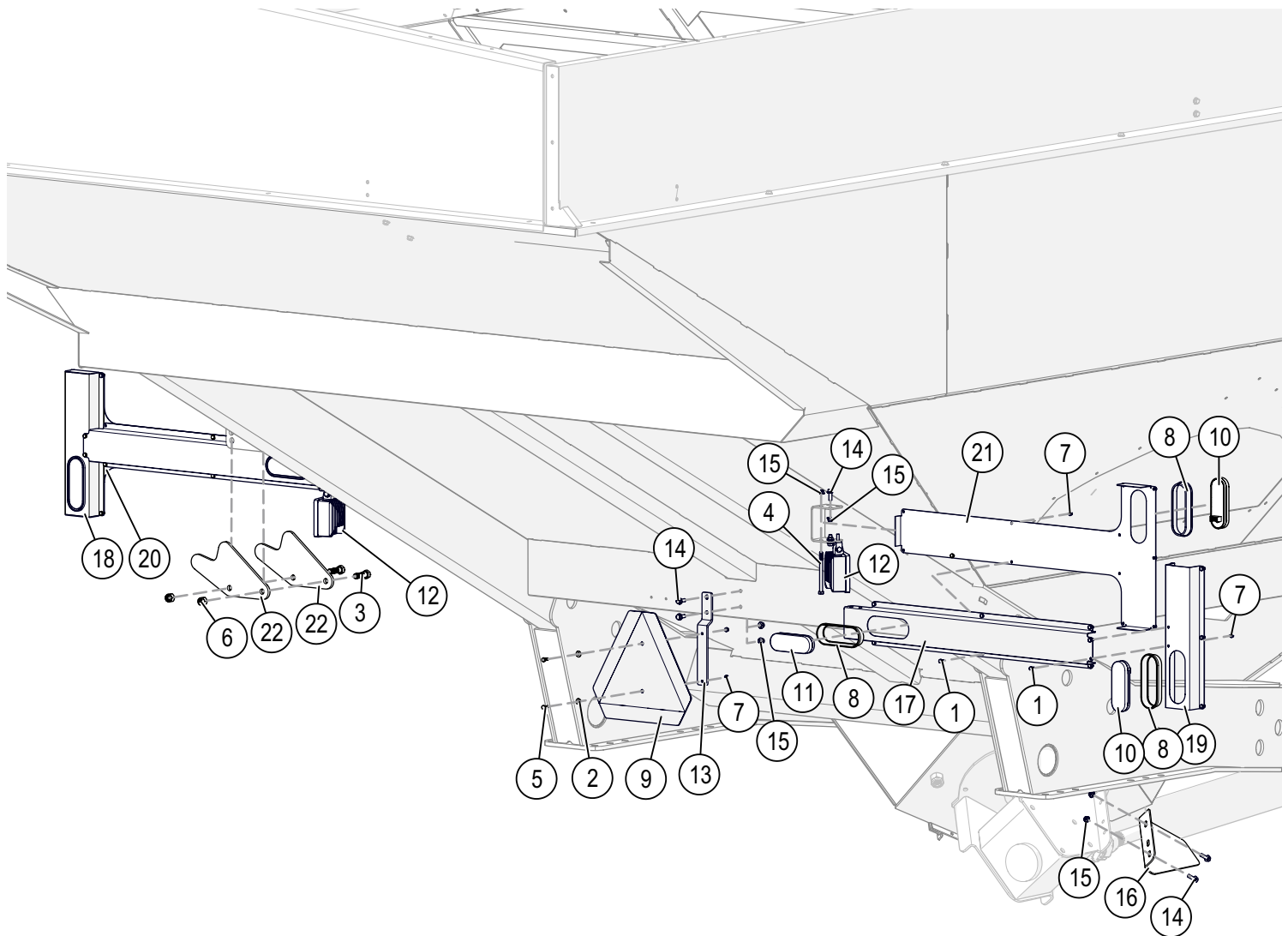
When ordering replacement parts please provide the Unit Color and Item Number

# Internal Assembly



ID	Item No	Description	Qty
1	00083	NUT, HEX, .50NC	1
2	00116	COTTER PIN, .156 X 1.50	4
3	02178	NUT, .50NC LOCK, NY. INSERT	1
4	03738-95	CYLINDER PIN	2
5	09741	CYLINDER CLEVIS	1
6	12477	1"-8 UNC NYLON INSERT NUT	4
7	14937	INNER DOOR INDICATOR	1
8	16259	BOLT .375NC X 1.00 GR5 HEX FLG	35
9	16260	NUT, .375NC NYLON LOCK FLG	35
10	17296	MESH CORNER	1
11	17297	INNER DOOR	1
12	17306	DOOR SLIDE ROD, THREADED	2
13	17317	HYD. CYLINDER 2.5" X 30.00" STROKE	1
14	17465	REAR MESH TEETH	2
15	17478	FENDER FOR 1300/1500 SA WHEEL	1
-	17479	FENDER FOR 1300/1500 SA TRACK	-

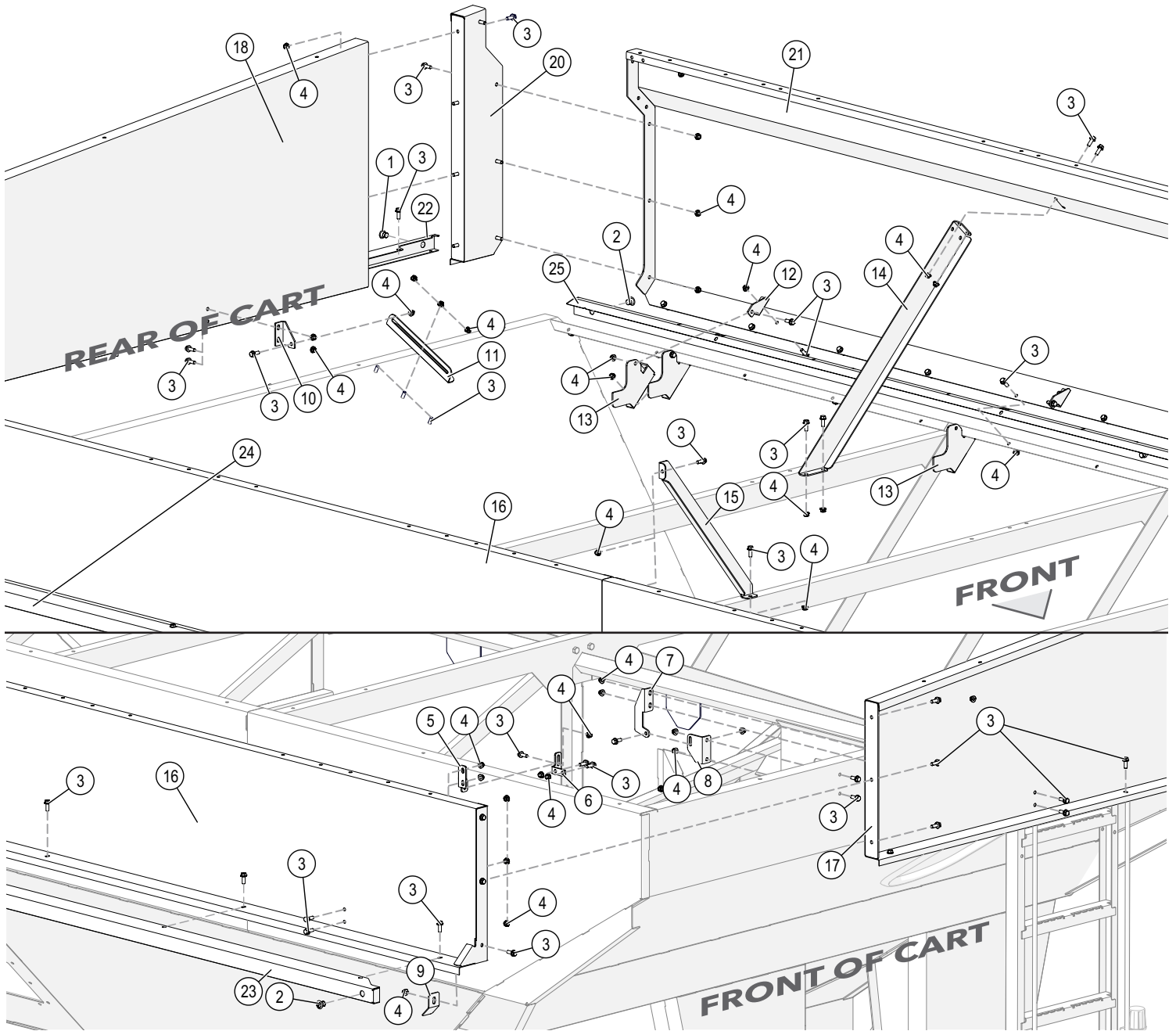
When ordering replacement parts please provide the Unit Color and Item Number



ID	Item No	Description	Qty
1	00092	BOLT .25NC X .50 GR5 HEX	26
2	00214	WASHER, FLAT, .25	2
3	00290	BOLT .625NC X 2.00 GR5 HEX	2
4	00675	BOLT .375NC X 5.00 GR5 HEX HEAD	2
5	01076	BOLT .25NC X .75 GR5 HEX	2
6	02587	NUT, .625 NC NYLON LOCK	2
7	02772	NUT, .25NC LOCK NYLON INSERT	28
8	03652	GROMMET RUBBER OVAL	6
9	12126	SMV SIGN	1
10	12249	LIGHT, SEALED OVAL S/T/T LAMP	4
11	14923	LED LIGHT, SEALED RED LAMP	2
12	14926	LIGHT WORK LED 12V-36V	2
13	14952	SMV HOLDER	1
14	16259	BOLT .375NC X 1.00 GR5 HEX FLG	8
15	16260	NUT, .375NC NY LOCK FLANGE	10
16	17286	GEARBOX U-JOINT SHIELD	1
17	17301	LIGHT ARM	2
18	17302	LEFT END POD	1
19	17303	RIGHT END POD	1
20	17304	LEFT LIGHT COVER	1
21	17305	RIGHT LIGHT COVER	1
22	17462	AUGER REST HOOK F/1300 & 1500SA	2

When ordering replacement parts please provide the Unit Color and Item Number

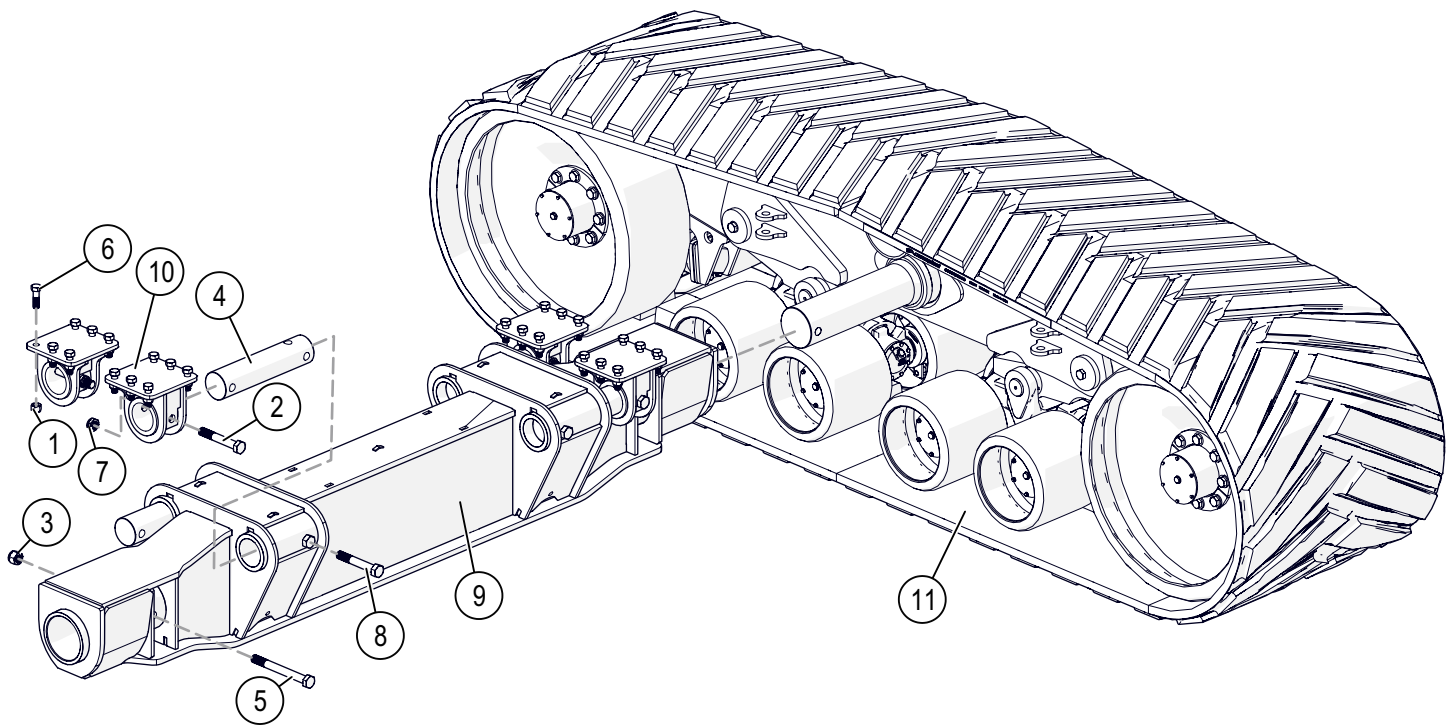
# Extensions



ID	Item No	Description	Qty
1	12962	LIGHT, MARKER, RED 3/4 LED PC-RATED	4
2	12963	LIGHT, MARKER, YELLOW 3/4 LED PC-RATED	8
3	16259	BOLT .375NC X 1.00 GR5 HEX FLG	162
4	16260	NUT, .375NC NY LOCK FLANGE	151
5	17268	EXTENSION SIDE HINGE TOP	4
6	17269	EXTENSION SIDE HINGE BOTTOM	4
7	17271	EXTENSION HINGE TOP	2
8	17272	EXTENSION FRONT HINGE BOTTOM	2
9	17378	CORNER RAMP	2
10	17466	REAR EXTENSION HINGE TOP	2
11	17467	REAR HINGE SLIDER	2
12	17468	TALL SIDE TOP HINGE	6
13	17469	TALL SIDE HINGE	6
14	17470	TALL SIDE BRACE 1300SA	3
-	17489	TALL SIDE BRACE 1500SA	3
15	17471	SHORT EXTENSION BRACE 1300SA	1
-	17488	SHORT EXTENSION BRACE 1500SA	1

ID	Item No	Description	Qty
16	17472	EXTENSION SHORT SIDE 1300SA	2
-	17486	EXTENSION SHORT SIDE 1500SA	2
17	17473	EXTENSION FRONT 1300 SA	1
-	17482	EXTENSION FRONT 1500 SA	1
18	17474	EXTENSION REAR 1300SA	1
-	17483	EXTENSION REAR 1500SA	1
19	17475	EXTENSION FRONT WING 1300SA	1
-	17484	EXTENSION FRONT WING 1500SA	1
20	17476	EXTENSION REAR WING 1300SA	1
-	17485	EXTENSION REAR WING 1500SA	1
21	17477	EXTENSION TALL SIDE 1300 SA	2
-	17487	EXTENSION TALL SIDE 1500 SA	2
22	18535	SIDE MARKER LIGHT MT 1300 SA REAR	1
23	18536	SIDE MARKER LIGHT MT RF SA	1
24	18537	SIDE MARKER LIGHT MT RR SA	1
25	18538	SIDE MARKER LIGHT MT LR SA	1
26	18539	SIDE MARKER LIGHT MT LF SA	1

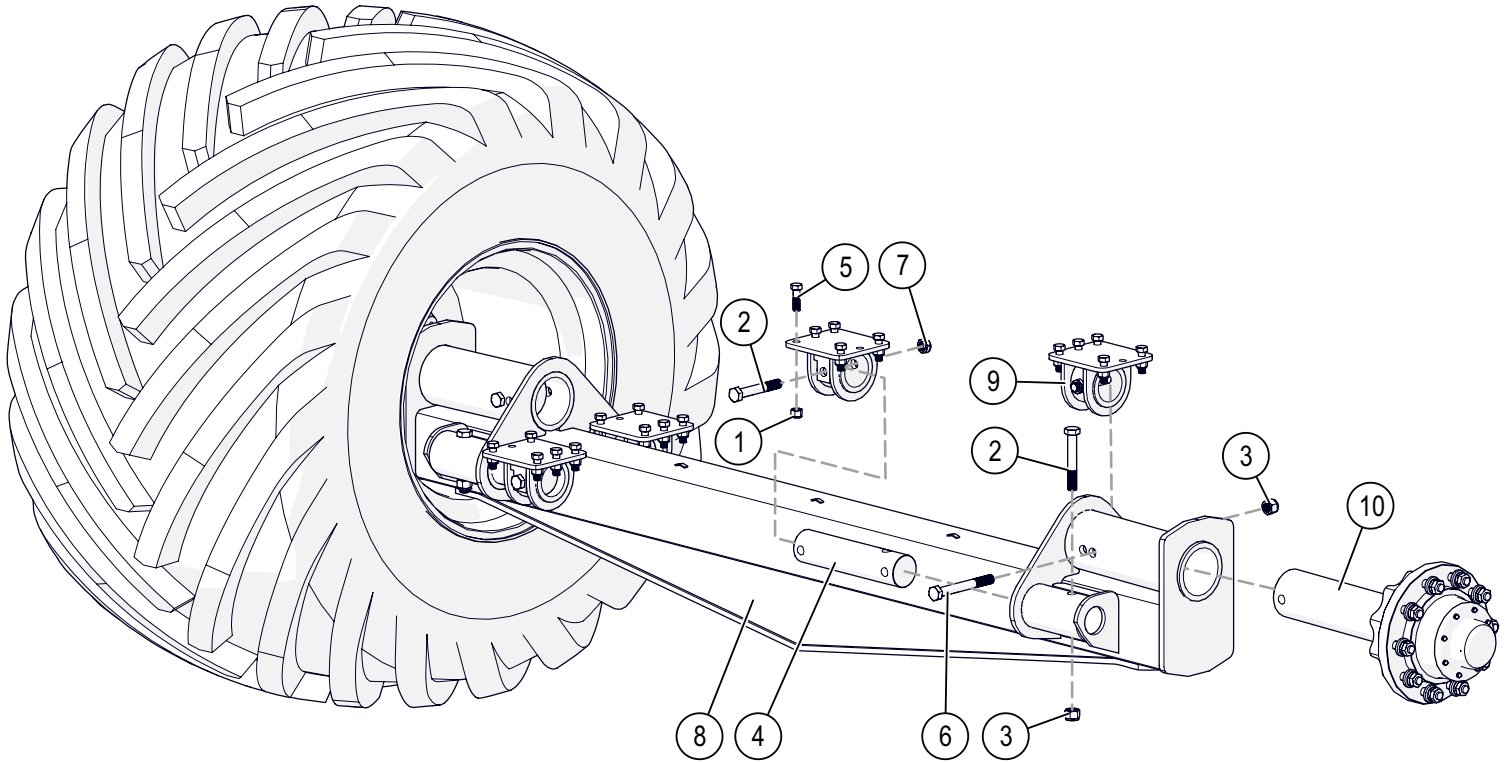
When ordering replacement parts please provide the Unit Color and Item Number



ID	Item No	Description	Qty
1	02961	NUT, .75NC LOCK NYLON INSERT	24
2	09454	BOLT 1.0NF X 6.50 GR8 HEX	4
3	09455	NUT, 1.0NF NYLON INSERT HEX	2
4	14014	PIN HITCH 3.75 OD	4
5	14029	BOLT 1.0NF X 9.50 GR8 HEX	2
6	14700	BOLT .75NC X 2.50 GR8 HEX	24
7	17444	NUT, 1.0NF NYLON INSERT HEX JAM	4
8	17445	BOLT 1.00-8UNC X 6.50 GR.8	4
9	17809	AXLE 4 BOGIE, CAMSO	1
10	18403	WEIGHBAR MOUNT	4
11	6295	TRACK CARRIAGE KIT	1

When ordering replacement parts please provide the Unit Color and Item Number

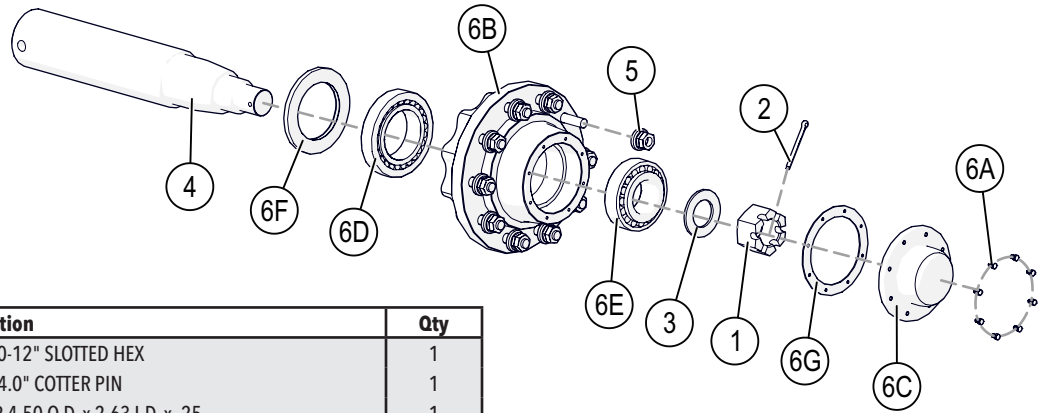
# Wheel Axle Assembly



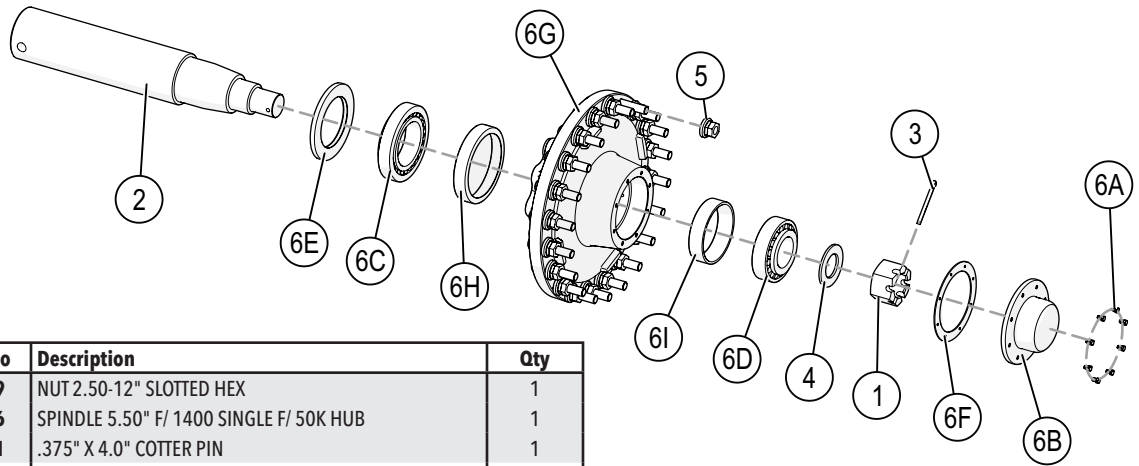
ID	Item No	Description	Qty
1	02961	.75NC NYLON INSERT LOCK NUT	20
2	09454	BOLT 1.0NF X 6.50 GR8 HEX	8
3	09455	NUT, 1.0NF NYLON INSERT HEX	6
4	14014	PIN HITCH 3.75 OD	4
5	14700	BOLT .75NC X 2.50 GR8 HEX	20
6	15134	BOLT 1.0NF X 8.50 GR8 HEX	2
7	17444	NUT, 1.0NF NYLON INSERT HEX JAM	4
8	17454	SINGLE AXLE F/ 1300 & 1500 SA GC	1
9	17455	WEIGH BAR MOUNT 3.75 SHORT	4
10	35754	HUB & SPINDLE F/SUPER SINGLE NON-SCALE	2
-	9445231-60	1250/50 R32 10 BOLT	-
-	9445236-60	1250/50 R32 20 BOLT	-

When ordering replacement parts please provide the Unit Color and Item Number

# Single Axle Spindle, 10 and 20 Bolt Hubs

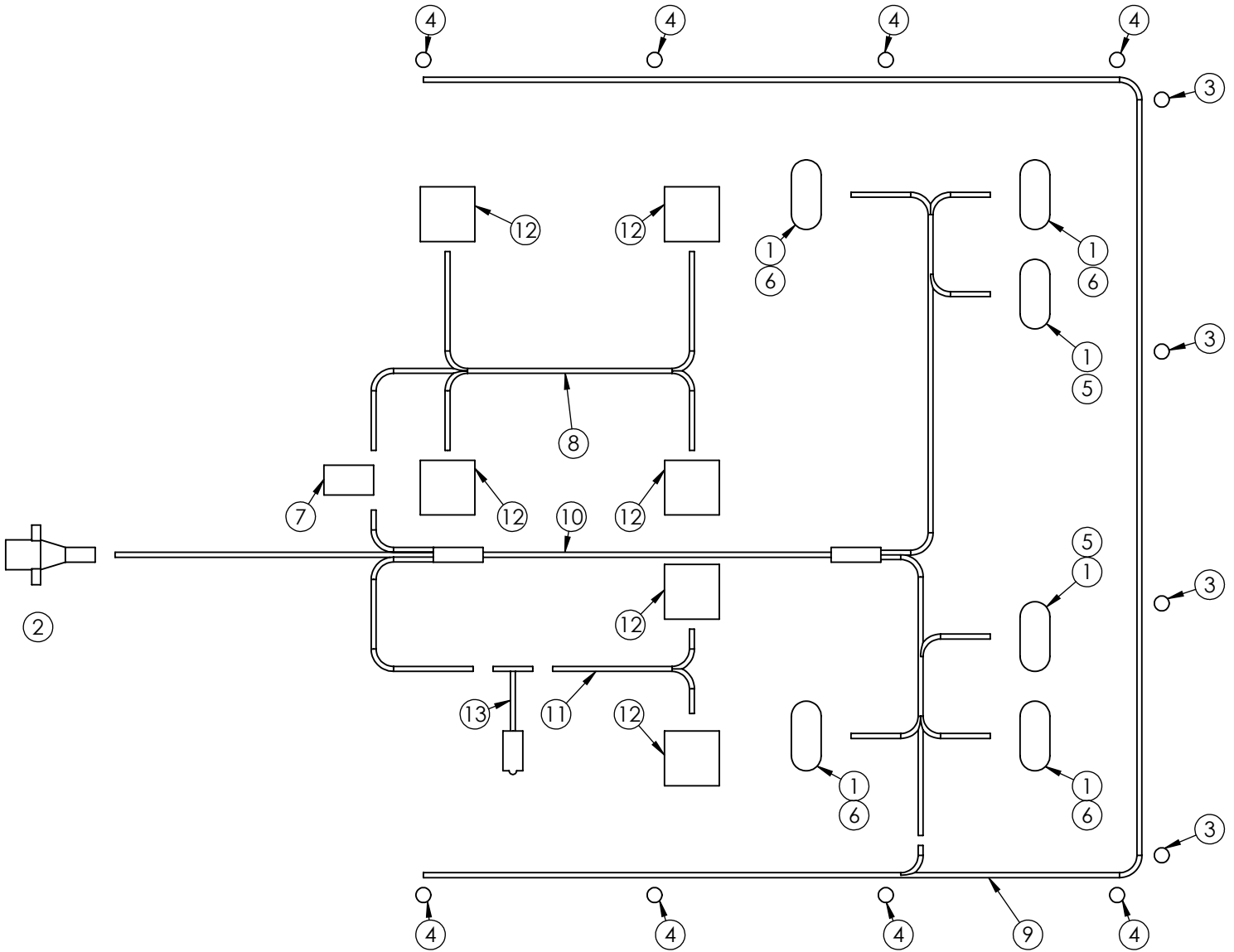


ID	Item No	Description	Qty
1	13899	NUT 2.50-12" SLOTTED HEX	1
2	13911	.375" X 4.0" COTTER PIN	1
3	14017	WASHER 4.50 O.D. x 2.63 I.D. x .25	1
4	13906	SPINDLE 5.50" F/ SINGLE F/ 50K HUB	1
5	15830	WHEEL NUT 22MM LOCKING	10
6	5963	HUB 50K BRAKING 10 BOLT	1
6A	04305	BOLT, 5/16NC X .50 GR5 HEX	8
6B	13900	HUB 50K W/ INNER & OUTER CUPS & STUD BOLTS	1
-	14026	REPLACEMENT STUD	-
6C	13901	HUB CAP F/ 50K HUB	1
6D	13902	BEARING CONE 795, TIMKIN	1
6E	13903	BEARING CONE 842 TIMKIN	1
6F	14016	SEAL OIL F/ 50K HUB	1
6G	14025	GREASE SEAL F/ 13900	1
-	13905	INNER BEARING RACE (832 TIMKEN) (REPLACEMENT)	-
-	13904	OUTER BEARING RACE (792 TIMKEN) (REPLACEMENT)	-



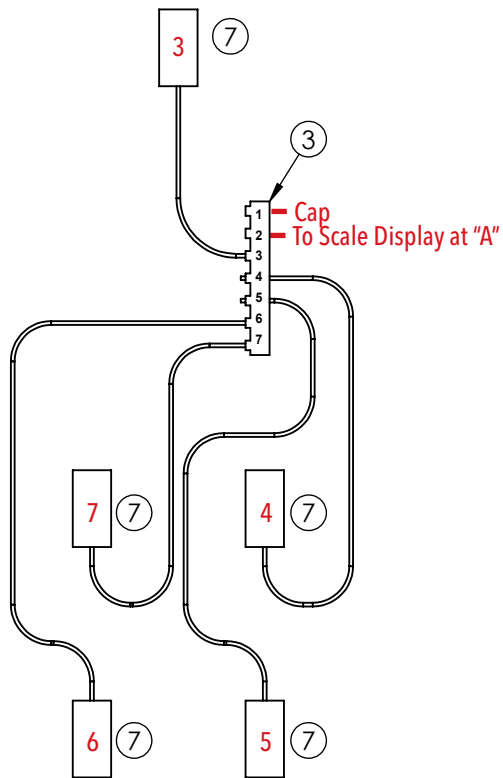
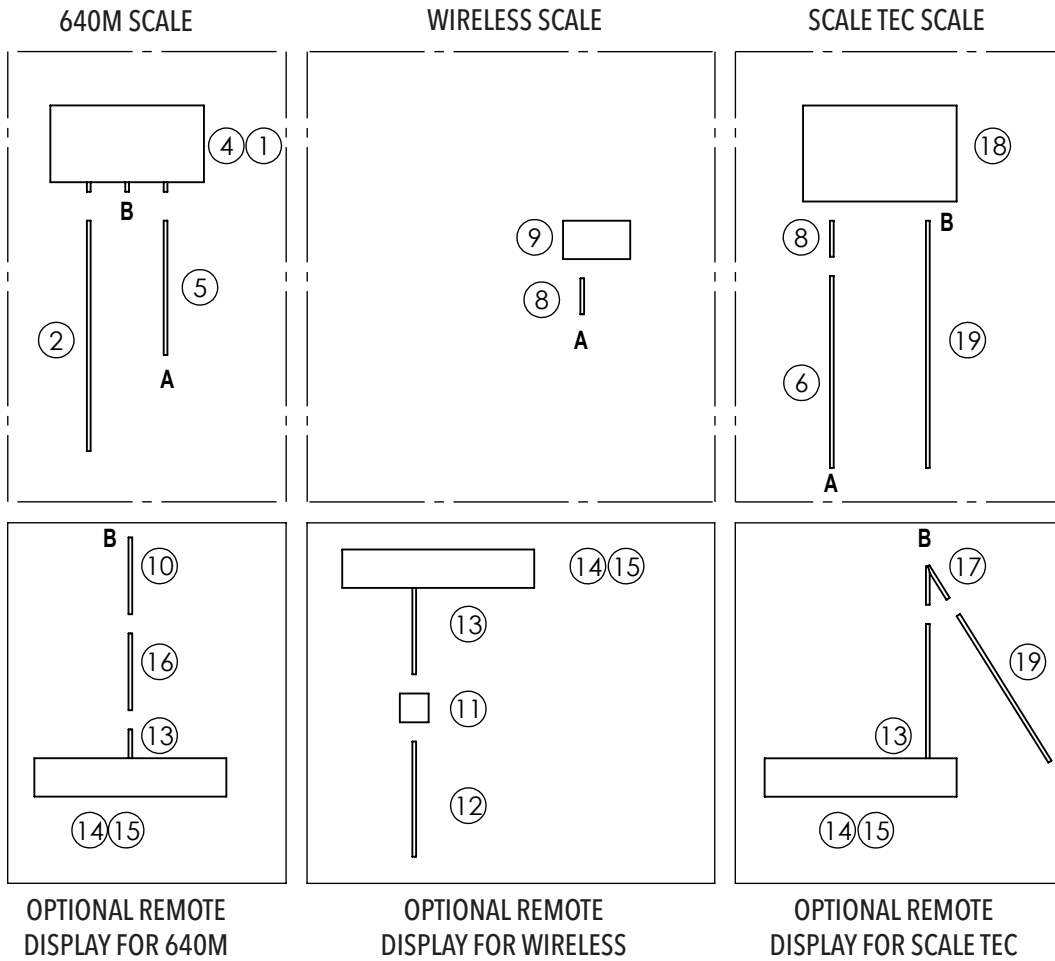
ID	Item No	Description	Qty
1	13899	NUT 2.50-12" SLOTTED HEX	1
2	13906	SPINDLE 5.50" F/ 1400 SINGLE F/ 50K HUB	1
3	13911	.375" X 4.0" COTTER PIN	1
4	14017	WASHER 4.50 O.D. x 2.63 I.D. x .25	1
5	15830	WHEEL NUT 22MM LOCKING	20
6	6151	HUB 50K BRAKING 20 BOLT	1
6A	04305	BOLT, 5/16NC X .50 GR5 HEX	8
6B	13901	HUB CAP F/ 50K HUB	1
6C	13902	BEARING CONE 795, TIMKIN	1
6D	13903	BEARING CONE 842 TIMKIN	1
6E	14016	SEAL OIL F/ 50K HUB	1
6F	14025	GREASE SEAL F/ 13900	1
6G	15552	HUB 50K 20 BOLT W/ INNER/OUTER RACE & STUDS	1
-	18325	REPLACEMENT STUD	-
6H	13905	INNER BEARING RACE (832 TIMKEN) (REPLACEMENT)	-
6I	13904	OUTER BEARING RACE (792 TIMKEN) (REPLACEMENT)	-

When ordering replacement parts please provide the Unit Color and Item Number



ID	Item No	Description	Qty
1	03652	GROMMET RUBBER OVAL	6
2	07416	PLUG CONNECTOR 7-WAY MALE	1
3	12962	MARKER LIGHT RED <b>(OPTIONAL)</b>	4
4	12963	MARKER LIGHT YELLOW <b>(OPTIONAL)</b>	8
5	14923	LIGHT 2.3" X 6.5" LED RED	2
6	14924	LIGHT 2.3" X 6.5" LED YELLOW	4
7	18529	WIRELESS REMOTE CONTROL F/ WORK LIGHTS <b>(OPTIONAL)</b>	1
8	18531	HARNES WORK LIGHT F/ SA GRAIN CART <b>(OPTIONAL)</b>	1
9	18534	HARNES MARKER LIGHTS SA <b>(OPTIONAL)</b>	1
10	18556	HARNES WIRE F/ SA GC	1
11	18625	HARNES WIRE SPOUT LIGHTS	1
12	18747	LIGHT WORK LED W/ WEATHER PACK PLUG	6
13	18748	LIGHT SWITCH ASSEMBLY W/ WEATHER PACK PLUG	1

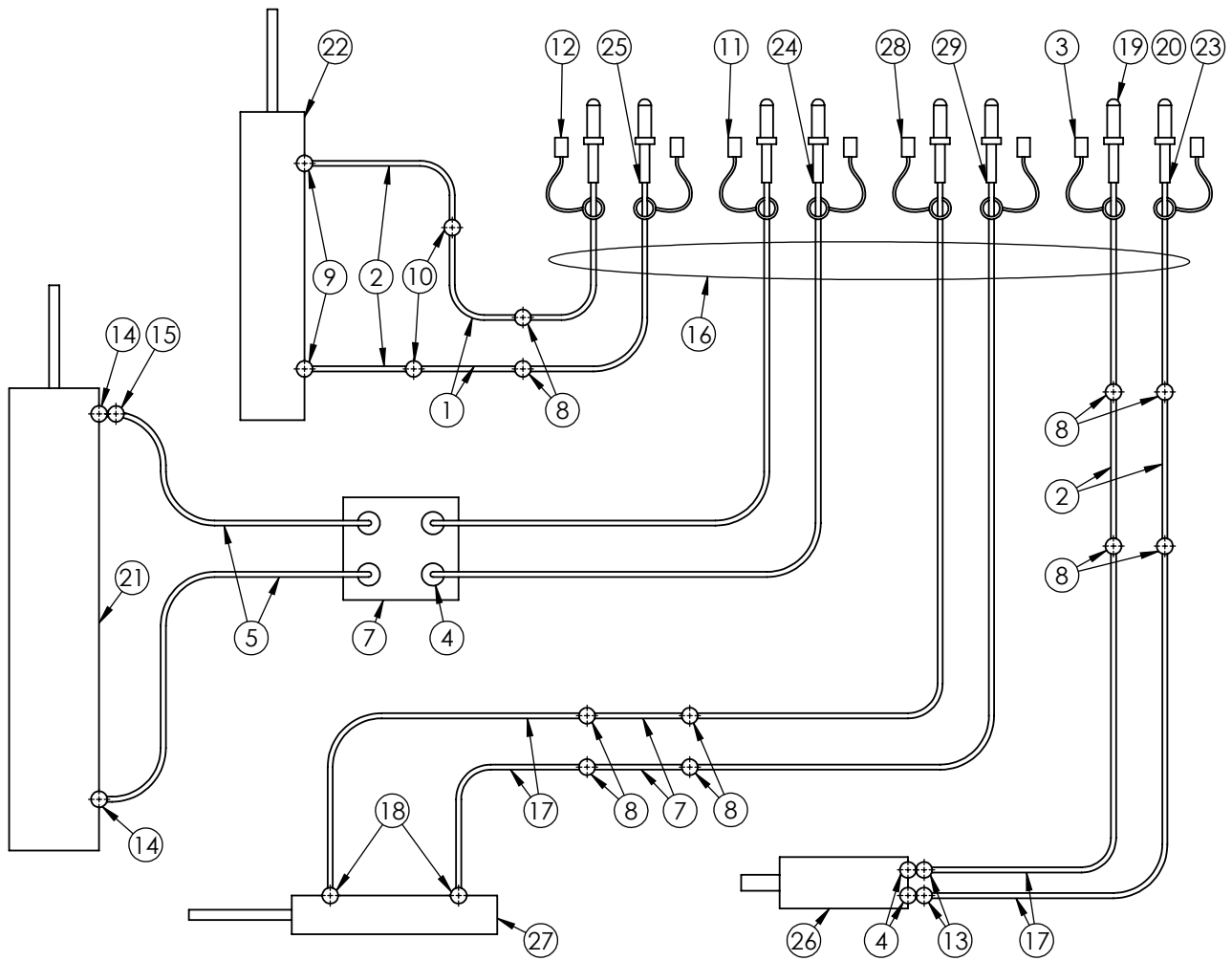
When ordering replacement parts please provide the Unit Color and Item Number



ID	Item No	Description	Qty
1	09440	640M SCALE BRACKET	1
2	09441	POWER CORD 8 FT	1
3	10941	JUNCTION BOX 7 PLUG	1
4	12259	MONITOR WEIGHTRONIX 640M	1
5	12264	HARNES 25 JUNCTION BOX TO CONSOLE	1
6	13266	HARNES 15 JUNCTION BOX TO CONSOLE	1
7	13983	WEIGHBAR 3.75 X 15.75 W/ CABLE	5
8	14992	CABLE F/ WIRELESS SCALE 5P TO AMP 3FT	1
9	15968	CONTROL BOX F/ WIRELESS SCALE W/ AUTO GATE	1
-	15360	BATTERY AA 3.6V LITHIUM (REPLACEMENT)	-
10	18199	CABLE EXTENSION 10' F/ REMOTE DISPLAY (OPTIONAL)	1
11	18356	SERIAL LINK DATA INTERFACE MODULE	1
12	18358	SERIAL LINK POWER CABLE	1
13	18430	REMOTE DISPLAY 4" TALL	1
14	18478	REMOTE DISPLAY MOUNT (NOT SHOWN)	1
15	18479	DISPLAY MOUNT (NOT SHOWN)	1
16	18491	CABLE F/ REMOTE DISPLAY TO 640M 10'	1
17	18533	Y CABLE F/ SCALE TEC REMOTE DISPLAY	1
18	18559	SCALE TEC INDICATOR	1
19	18560	HARVEST MATE ISO 2.0 CABLE 30'	1

When ordering replacement parts please provide the Unit Color and Item Number

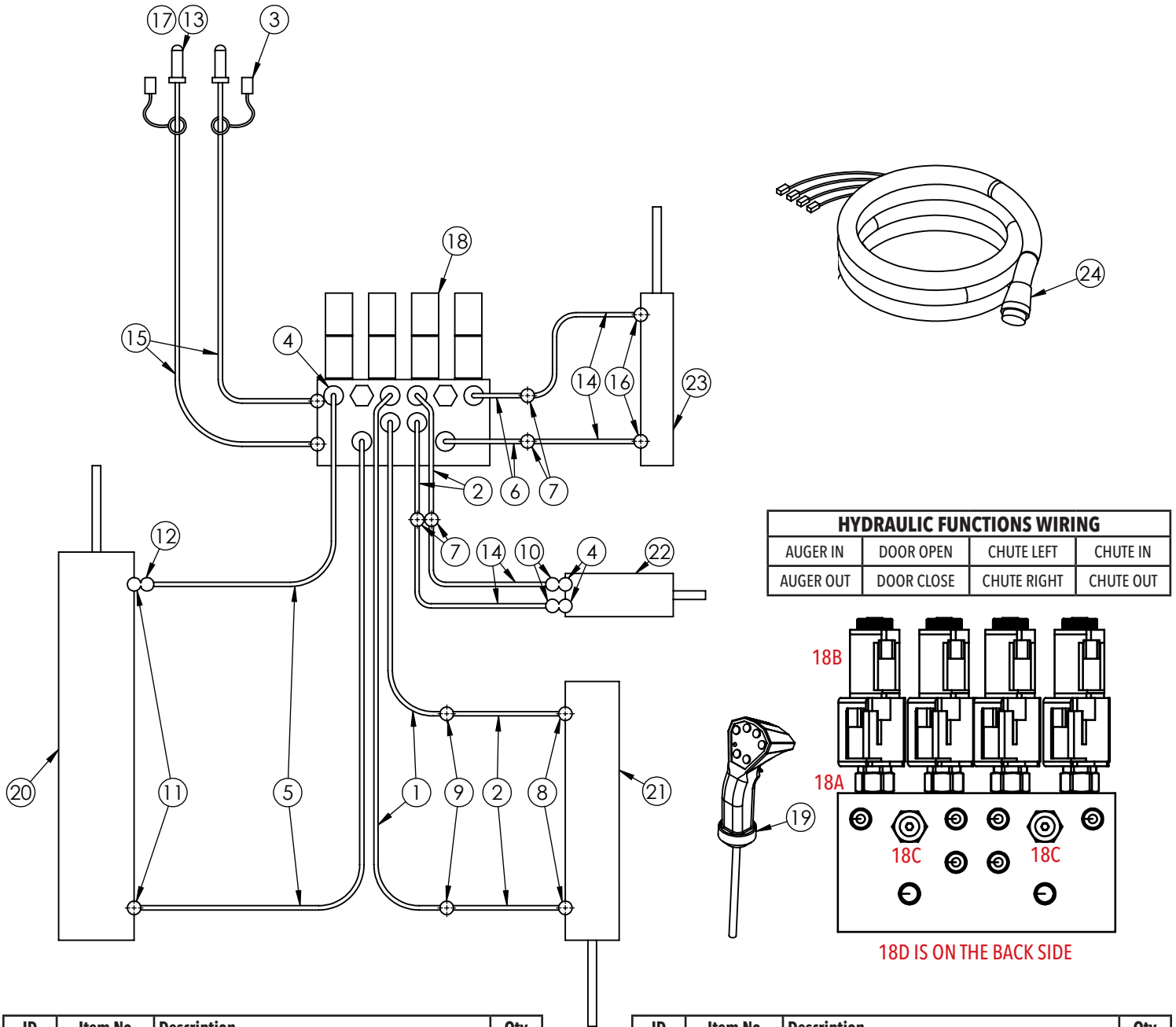
# Hydraulic Schematic



ID	Item No	Description	Qty
1	05190	1/4" X 48" HYDRAULIC HOSE	2
2	05191	1/4" X 36" HYDRAULIC HOSE	4
3	05198	RUBBER COUPLER COVER BLACK	2
4	05243	STRAIGHT #6 JIC X #6 W/ O-RING	6
5	05839	1/4" X 142" HYDRAULIC HOSE	2
6	07071	1/4" X 72" HYDRAULIC HOSE	2
7	07582	PILOT OPERATED CHECK VALVE 4 WAY	1
8	09950	UNION #6 JIC MALE 2X	10
9	11143	ELBOW #6M JIC & #6 O-RING	2
10	12374	BULKHEAD 3/8 JIC 45° ELBOW	2
11	12677	RUBBER COUPLER COVER RED	2
12	12678	RUBBER COUPLER COVER YELLOW	2
13	13255	ORIFICE JIC#6 .045	2
14	13442	ELBOW #6M JIC & #10 O-RING	2
15	13631	ORIFICE JIC#6 .060	1

ID	Item No	Description	Qty
16	13883	1/4" X 18' HYDRAULIC HOSE W/ COUPLER	8
17	13884	1/4" X 258" HYDRAULIC HOSE	4
18	13886	ELBOW #6 O-RING & #6M JIC W/ .041 ORIFICE	2
19	13888	QUICK COUPLER #8 O-RING (REPLACEMENT)	-
20	13889	#8 HYDRAULIC O-RING (REPLACEMENT)	-
21	17104	AUGER FOLD CYLINDER (FOLDING) (RED)	1
22	17317-30	INNER DOOR CYLINDER (FLOW) (YELLOW)	1
23	17515	TUBBING HEAT SHRINK 1.00 DIA BLACK	1.5'
24	17516	TUBBING HEAT SHRINK 1.00 DIA RED	1.5'
25	17517	TUBBING HEAT SHRINK 1.00 DIA YELLOW	1.5'
26	18528	HYDRAULIC MOTOR F/ SPOUT (CHUTE ROTATE) (BLACK)	1
27	18596-30	ADJUSTABLE CHUTE CYLINDER (CHUTE TILT) (GREEN)	1
28	18623	RUBBER COUPLER COVER GREEN	2
29	18624	TUBBING HEAT SHRINK 1.00 DIA GREEN	1.5'

When ordering replacement parts please provide the Unit Color and Item Number



HYDRAULIC FUNCTIONS WIRING			
AUGER IN	DOOR OPEN	CHUTE LEFT	CHUTE IN
AUGER OUT	DOOR CLOSE	CHUTE RIGHT	CHUTE OUT

ID	Item No	Description	Qty
1	05190	1/4" X 48" HYDRAULIC HOSE	2
2	05191	1/4" X 36" HYDRAULIC HOSE	4
3	05198	RUBBER COUPLER COVER BLACK	2
4	05243	STRAIGHT #6 JIC X #6 W/ O-RING	10
5	05839	1/4" X 142" HYDRAULIC HOSE	2
6	07071	1/4" X 72" HYDRAULIC HOSE	2
7	09950	UNION #6 JIC MALE 2X	4
8	11143	ELBOW #6M JIC & #6 O-RING	2
9	12374	BULKHEAD 3/8 JIC 45° ELBOW	2
10	13255	ORIFICE JIC#6 .045	2
11	13442	ELBOW #6M JIC & #10 O-RING	2
12	13631	ORIFICE JIC#6 .060	1
13	13786	QUICK COUPLER #10 O-RING (REPLACEMENT)	-
14	13884	1/4" X 258" HYDRAULIC HOSE	4

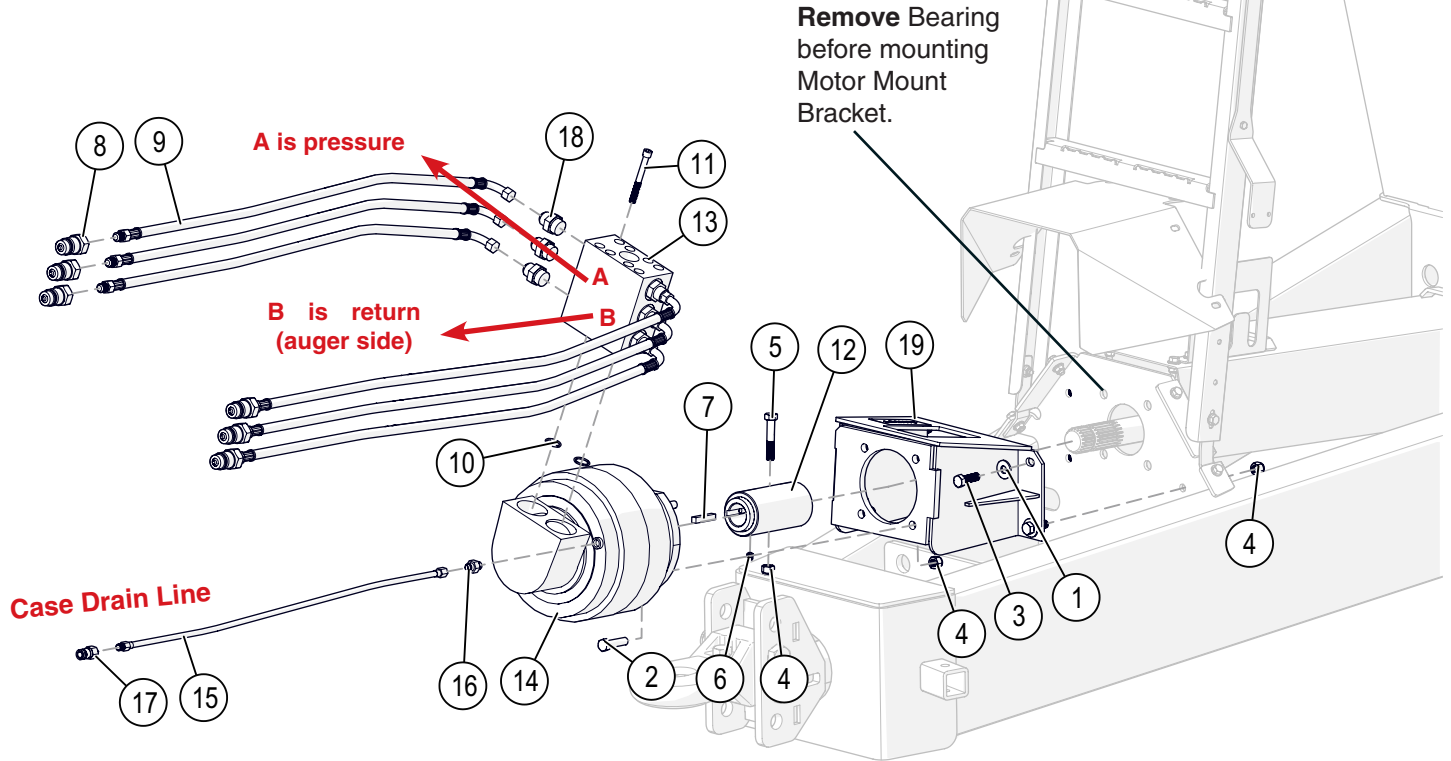
ID	Item No	Description	Qty
15	13885	1/2" X 22' HYDRAULIC HOSE W/ COUPLER	2
16	13886	ELBOW #6 O-RING & #6M JIC W/ .041 ORIFICE	2
17	13891	#10 HYDRAULIC O-RING (REPLACEMENT)	-
18	16407	HYDRAULIC BLOCK 8 FUNCTION	1
18A	18707	REXROTH CARTRIDGE (REPLACEMENT)	-
18B	18708	REXROTH COIL GZ37 (REPLACEMENT)	-
18C	18709	REXROTH PO CHECK (REPLACEMENT)	-
18D	18710	REXROTH TANK CHECK (REPLACEMENT)	-
19	17005	PENDANT 8 FUNCTION BACKLIT	1
-	17060	PENDANT EXTENSION 12' HARNESS (OPTIONAL)	-
20	17104	AUGER FOLD CYLINDER (FOLDING)	1
21	17317-30	INNER DOOR CYLINDER (FLOW)	1
22	18528	HYDRAULIC MOTOR F/ SPOUT (CHUTE ROTATE)	1
23	18596-30	ADJUSTABLE CHUTE CYLINDER (CHUTE TILT)	1
24	18683	HARNESS 26' HITCH/BLOCK 8 FUNCTION SA	1

When ordering replacement parts please provide the Unit Color and Item Number

**NOTE:**  
**Do Not Exceed 75 GPM**  
 of Oil to Hydraulic Motor.  
 Fill motor with Hydraulic oil  
**BEFORE** running.

## ATTENTION

Case Drain Line **MUST** be connected to  
 Zero Return Port on Tractor before running  
 Hydraulic Motor.



ID	Item No	Description	Qty
1	00085	.50 FLAT WASHER	4
2	01253	BOLT .50NC X 2.00 HEX HEAD GR.5	4
3	01254	BOLT .50 NC X 1.50 GR.5 HEX	4
4	02178	NUT .50NC LOCK NY. INSERT	9
5	04797	BOLT .50NC X 2.75 GR5 HEX	1
6	05256	SET SCREW .375NC X .50 SOCKET HEAD	1
7	13535	.375 x .375 x 2.00 KEY	1
8	13786	QUICK COUPLER #10 O-RING WITH MALE TIP	6
9	13787	HYD HOSE .63 X 168 F#10 JIC ELB X M#10 O-RING	6
10	13789	REPLACEMENT O-RING F/ 13499 BLOCK	2
11	13790	REPLACEMENT CAP SCREW 3.50" F/ 13499	8
12	15110	COUPLER ASSY 1.75-20 X 1.50 KEY	1
13	15111	FS HYD MOTOR VALVE MANIFOLD	1
14	15112	FS350 HYD MOTOR	1
15	15234	HYD HOSE .38 X 168" - CASE DRAIN	1
16	15235	FTG BRITISH PARALLEL	1
17	15236	QUICK COUPLER CASE DRAIN #8 ORING	1
18	15237	FTG STR #12 MALE O-RING - #10 MALE JIC	6
19	17320	HYDRAULIC MOTOR MT F/850, 1000, 1100, 1300 & 1500	1

When ordering replacement parts please provide the Unit Color and Item Number



### TORQUE SPECIFICATIONS

Torque figures indicated are valid for non-greased or non-oiled threads and heads unless otherwise specified. Therefore, do not grease or oil bolts or capscrews unless otherwise specified in this manual. When using locking elements, increase torque values by 5%.

\* GRADE or CLASS value for bolts and capscrews are identified by their head markings.

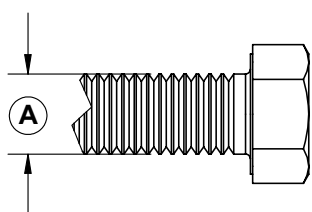
### BOLT TORQUE DATA FOR STANDARD NUTS, BOLTS, AND CAPSCREWS.

Tighten all bolts to torques specified in chart unless otherwise noted. Check tightness of bolts periodically, using bolt chart as guide. Replace hardware with same grade bolt.

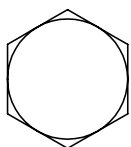
NOTE: Unless otherwise specified, high-strength Grade 5 hex bolts are used throughout assembly of equipment.

* BOLT TORQUE FOR STANDARD BOLTS						
"A"	GRADE 2		GRADE 5		GRADE 8	
	lb-ft	(N.m)	lb-ft	(N.m)	lb-ft	(N.m)
1/4"	6	(8)	9	(12)	12	(16)
5/16"	10	(13)	18	(25)	25	(35)
3/8"	20	(27)	30	(40)	45	(60)
7/16"	30	(40)	50	(70)	80	(110)
1/2"	45	(60)	75	(100)	115	(155)
9/16"	70	(95)	115	(155)	165	(220)
5/8"	95	(130)	150	(200)	225	(300)
3/4"	165	(225)	290	(390)	400	(540)
7/8"	170	(230)	420	(570)	650	(880)
1"	225	(300)	630	(850)	970	(1310)

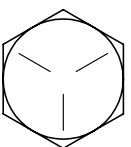
* BOLT TORQUE FOR METRIC BOLTS						
"A"	CLASS 8.8		CLASS 9.8		CLASS 10.9	
	lb-ft	(N.m)	lb-ft	(N.m)	lb-ft	(N.m)
6	9	(13)	10	(14)	13	(17)
7	15	(21)	18	(24)	21	(29)
8	23	(31)	25	(34)	31	(42)
10	45	(61)	50	(68)	61	(83)
12	78	(106)	88	(118)	106	(144)
14	125	(169)	140	(189)	170	(230)
16	194	(263)	216	(293)	263	(357)
18	268	(363)	--	--	364	(493)
20	378	(513)	--	--	515	(689)
22	516	(699)	--	--	702	(952)
24	654	(886)	--	--	890	(1206)



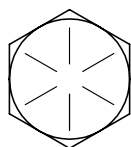
GRADE-2



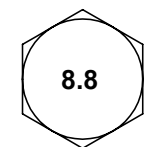
GRADE-5



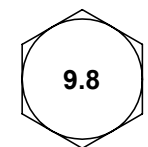
GRADE-8



CLASS 8.8



CLASS 9.8



CLASS 10.9



When ordering replacement parts please provide the Unit Color and Item Number

**DEMCO**

4010 320th St., Boyden, IA. 51234

Phone: (712) 725-2311

Fax: (712) 725-2380

Toll Free: 1-800-54DEMCO (1-800-543-3626)

**Demco warranty policies, operator manuals, and product registration  
can be found online:**

**[www.demco-products.com](http://www.demco-products.com)**