



Doing Our Best to Provide You the Best

AG20036, Rev 20
11/20

GRAIN CART

850, 1050 & 1150



OPERATOR MANUAL

INTRODUCTION

Thank you for purchasing a Demco Grain Cart. We feel you have made a wise choice and hope you are completely satisfied with your new piece of equipment. Proper care and use will result in many years of service.

WARRANTY POLICY, OPERATOR MANUALS & REGISTRATION

Go online to www.demco-products.com to review Demco warranty policies, operator manuals and register your Demco product.



WARNING: TO AVOID PERSONAL INJURY OR DEATH, OBSERVE FOLLOWING INSTRUCTIONS:

- Ensure that anybody present is clear before applying power to any machinery used in conjunction with grain cart or when moving grain cart.
- Never allow anyone in, near, or on grain cart during transporting or unloading of grain. Moving grain is dangerous and can cause entrapment, resulting in severe injury or death by suffocation.
- Do not exceed 20 miles per hour when towing grain cart.

GENERAL INFORMATION

- 1. Unless otherwise specified, high-strength (grade5) (3 radial-line head markings) hex head bolts are used throughout assembly of this piece of equipment.
- 2. Whenever terms **"LEFT"** and **"RIGHT"** are used in this manual it means from a position behind wagon box and facing forward.
- 3. When placing a parts order, refer to this manual for proper part numbers and place order by **PART NO. and DESCRIPTION.**
- 4. Read assembly instructions carefully. Study assembly procedures and all illustrations before you begin assembly. Note which parts are used in each step. This unit must be assembled in proper sequence or complications will result.

TABLE OF CONTENTS

General information2

Safety You Can Live With 3-9

Bolt Torque 10

Safety Sign Locations..... 11-12

850 Axle Assembly and Parts Breakdown..... 13

1050 Axle Assembly and Parts Breakdown 14

1150 Axle Assembly and Parts Breakdown 15

Auger Assembly and Parts Breakdown..... 16

Gearbox Assembly and Parts Breakdown..... 17

Standard & High Performance Hydraulic Drive Assembly Parts Breakdown..... 18-19

Grain Cart Assembly and Parts Breakdown20-21

Extensions Assembly and Parts Breakdown22-23

Hydraulics Assembly and Parts Breakdown..... 24

Pendant Control Hydraulic Schematic and Parts Breakdown..... 25

Lighting Assembly and Parts Breakdown 26

Window Assembly, Door Assembly and Parts Breakdown..... 27

Scale Option and Parts Breakdown 28

Maintenance, Grease and Lube 29

PTO Shaft Parts Breakdown 30

Grain Cart Checklist and Tire Inflation Chart..... 31

TAKE NOTE! THIS SAFETY ALERT SYMBOL FOUND THROUGHOUT THIS MANUAL IS USED TO CALL YOUR ATTENTION TO INSTRUCTIONS INVOLVING YOUR PERSONAL SAFETY AND SAFETY OF OTHERS. FAILURE TO FOLLOW THESE INSTRUCTIONS CAN RESULT IN INJURY OR DEATH!



**THIS SYMBOL MEANS
ATTENTION
BECOME ALERT
YOUR SAFETY IS INVOLVED!**

SIGNAL WORDS:

This manual uses the following signal words--DANGER, WARNING, and CAUTION-- with safety messages. The appropriate signal word has been selected using the following guidelines.

DANGER:

Indicates an imminently hazardous situation that, if not avoided, will result in death or serious injury. This signal word is to be limited to most extreme situations typically for machine components which, for functional purposes, cannot be guarded.

WARNING:

Indicates a potentially hazardous situation that, if not avoided, could result in death or serious injury, and includes hazards that are exposed when guards are removed. It may also be used to alert against unsafe practices.

CAUTION:

Indicates a potentially hazardous situation that, if not avoided, may result in minor or moderate injury. It may also be used to alert against unsafe practices.

If you have questions not answered in this manual, require additional copies, or if your manual is damaged, please contact your dealer or Demco, 4010 320th Street, Boyden, IA 51234
ph: (712) 725-2311 or Toll Free: 1-800-543-3626 Fax: (712) 725-2380
<http://www.demco-products.com>



SAFETY...YOU CAN LIVE WITH IT



EQUIPMENT SAFETY GUIDELINES

Every year many accidents occur which could have been avoided by a few seconds of thought and a more careful approach to handling equipment. You, the operator, can avoid many accidents by observing the following precautions in this section. To avoid personal injury, study the following precautions and insist those working with you, or you yourself, follow them.

In order to provide a better view, certain illustrations in your owners manual may show an assembly with a safety shield removed. However, equipment should never be operated in this condition. Keep all shields in place. If shield removal becomes necessary for repairs, replace shield prior to use.

Replace any caution, warning, danger or instruction safety decal that is not readable or is missing.

Do not attempt to operate this equipment under the influence of alcohol or drugs.

Review safety instructions with all users annually.

Operator should be a responsible adult. **DO NOT ALLOW PERSONS TO OPERATE OR ASSEMBLE THIS UNIT UNTIL THEY HAVE DEVELOPED A THOROUGH UNDERSTANDING OF SAFETY PRECAUTIONS AND HOW IT WORKS.**

To prevent injury or death, use a tractor equipped with a roll over protective system (ROPS). Do not paint over, remove, or deface any safety signs or warning decals on your equipment. Observe all safety signs and practice instructions on them.

Never exceed limits of a piece of machinery. If its ability to do a job, or to do so safely is in question **DON'T TRY IT.**



LIGHTING AND MARKING

It is the responsibility of customer to know lighting and marking requirements of local highway authorities and to install and maintain equipment to provide compliance with regulations. Add extra lights when transporting at night or during periods of limited visibility.

Lighting kits are available from your dealer or from manufacturer.



REMEMBER

Your best assurance against accidents is a careful and responsible operator. If there is any portion of this manual or function you do not understand, contact your local authorized dealer or manufacturer.



SAFETY SIGN CARE

- Keep safety signs clean and legible at all times.
- Replace safety signs that are missing or have become illegible.
- Replacement parts that displayed a safety sign should also display current sign.
- Safety signs are available from your distributor, dealer parts department, or factory.

How to install safety signs:

- Be sure that installation area is clean and dry.
- Decide on exact position before you remove backing paper.
- Remove smallest portion of split backing paper.
- Align decal over specified area and carefully press small portion with exposed sticky backing in place.
- Slowly peel back remaining paper and carefully smooth remaining portion of decal into place.
- Small air pockets can be pierced with a pin and smoothed out using piece of decal backing paper.



TIRE SAFETY

- Failure to follow proper procedures when mounting a tire on a rim can produce an explosion which may result in a serious injury or death.
- Do not attempt to mount a tire unless you have proper equipment and experience to do job.
- Inflating or servicing tires can be dangerous. Whenever possible, trained personnel should be called to service and/or mount tires.
- Always order and install tires and wheels with appropriate type and load capacity to meet or exceed anticipated weight to be placed on the equipment.
- Refer to **"TIRE INFLATION CHART"** in your owners manual for maximum tire pressure for a Demco Grain Cart.



BEFORE OPERATION

- Carefully study and understand this manual and the Owner's Manual.
- Do not wear loose-fitting clothing which may catch in moving parts.
- Always wear protective clothing and substantial shoes.
- It is recommended that suitable protective hearing and eye protection be worn.
- Operator may come in contact with certain materials which may require specific safety equipment relative to handling of such materials. (Examples: extremely dusty, molds, fungus, bulk fertilizers, etc.)
- Keep wheel and lug nuts tightened to specified torque.
- Assure that agricultural implement tires are inflated evenly.
- Give unit a visual inspection for any loose bolts, worn parts, or cracked welds, and make necessary repairs. Follow maintenance safety instructions included in this manual.
- Be sure there are no tools lying on or in equipment
- Do not use unit until you are sure that area is clear, especially around children and animals.
- Don't hurry learning process or take unit for granted. Ease into it and become familiar with your new equipment.
- Practice operation of your equipment and its attachments. Completely familiarize yourself and other operators with its operation before using.
- Make sure that brakes are evenly adjusted (if equipped with brakes)
- Use a tractor equipped with Roll Over Protection System (ROPS) and fasten your seat belt prior to starting the engine.
- Manufacturer does not recommend usage of a tractor with the ROPS removed.
- Move tractor wheels to widest recommended settings to increase stability.
- Do not allow anyone to stand between tongue or hitch and towing vehicle when backing up to equipment.



DURING OPERATION

- Beware of bystanders, **PARTICULARLY CHILDREN!** Always look around to make sure that it is safe to start engine of towing vehicle or move unit. This is particularly important with higher noise levels and quiet cabs, as you may not hear people shouting.
- **NO PASSENGERS ALLOWED**- Do not carry passengers anywhere on or in tractor or equipment.
- Keep hands and clothing clear of moving parts.
- Do not clean, lubricate, or adjust your equipment while it is moving.

- When halting operation, even periodically, set tractor or towing vehicles brakes, disengage PTO, shut off engine, and **remove ignition key**.
- Be especially observant of operating area and terrain. Watch for holes, rocks, or other hidden hazards. Always inspect area prior to operation.
 - DO NOT operate near edge of drop-off or banks.
 - DO NOT operate on steep slopes as overturn may result.
 - Operate up and down (not across) intermediate slopes. Avoid sudden starts and stops.
- Pick the most level possible route when transporting across fields. Avoid edges of ditches, gullies, and steep hillsides.
- Be extra careful when working on inclines.
- Maneuver tractor or towing vehicle at safe speeds.
- Avoid overhead wires or other obstacles. Contact with overhead lines could cause serious injury or death.
- Avoid loose gravel, rocks, and holes; they can be dangerous for equipment operation or movement.
- Allow for unit length when making turns.
- Do not walk or work under raised components or attachments unless securely positioned and blocked.
- Keep all bystanders, pets, and livestock clear of work area.
- Operate towing vehicle from operators seat only.
- Never stand alongside of unit with engine running or attempt to start engine and/or operate machine while standing alongside of unit.
- Never leave running equipment unattended.
- As a precaution, always recheck hardware on equipment following every 100 hours of operation. Correct all problems. Follow maintenance safety procedures.



FOLLOWING OPERATION

- Following operation, or when unhitching, stop tractor or towing vehicle, set brakes, shut off engine and **remove ignition key**.
- Store unit in an area away from human activity.
- Do not park equipment where it will be exposed to livestock for long periods of time. Damage and livestock injury could result.
- Do not permit children to play on or around stored unit.
- Make sure all parked machines are on a hard, level surface and engage all safety devices.
- Wheel chocks may be needed to prevent unit from rolling.



HIGHWAY AND TRANSPORT OPERATIONS

- **SAFETY CHAINS:** If equipment is going to be transported on a public highway, always follow state and local regulations regarding safety chains and auxiliary lighting. Be sure to check with local law enforcement agencies for your own particular regulations. Only safety chains (not elastic or nylon/plastic tow straps) should be used to retain connection between towing and towed machines in event of separation of primary attaching system. Use a high strength, appropriately sized hitch pin with a mechanical retainer and attach safety chains. Criss cross chains under tongue and secure to draw bar cage, mounting loops, or bumper frame.
- Adopt safe driving practices:
 - Keep brake pedals latched together at all times. **NEVER USE INDEPENDENT BRAKING WITH MACHINE IN TOW, LOSS OF CONTROL AND/OR UPSET OF UNIT CAN RESULT.**
 - Always drive at a safe speed relative to local conditions, ensure that your speed is low enough for an emergency stop. Keep speed to a minimum.
 - Reduce speed prior to turns to avoid risk of overturning.
 - Always keep tractor or towing vehicle in gear to provide engine braking when going downhill. Do not coast.
 - Do not drink and drive!
- Comply with state and local laws governing highway safety and movement of farm machinery on public roads.
- Use approved accessory lighting, flags and necessary warning devices to protect operators of other vehicles on highway during transport. Various safety lights and devices are available from your dealer.
- Use of flashing amber lights is acceptable in most localities. However, some localities prohibit their use. Local laws should be checked for all highway lighting and marking requirements.
- When driving tractor and equipment on road under 20 m.p.h. (40 kph) at night or during day, use flashing amber warning lights and a slow moving vehicle (SMV) identification emblem.
- Plan your route to avoid heavy traffic.
- Be a safe and courteous driver. Always yield to oncoming traffic in all situations, including narrow bridges, intersections, etc.
- Be observant of bridge load ratings. Do not cross bridges rated lower than gross weight at which you are operating.
- Watch for obstructions overhead and side to side while transporting.
- Always operate equipment in a position to provide maximum visibility. Make allowances for increased length and weight of equipment when making turns, stopping unit, etc.



PERFORMING MAINTENANCE

- Good maintenance is your responsibility. Poor maintenance is an invitation to trouble.
- Make sure there is plenty of ventilation. Never operate engine of towing vehicle in a closed building. Exhaust fumes may cause asphyxiation.
- Before working on this machine, stop towing vehicle, set brakes, shut off engine and **remove ignition key**.
- Always use safety support and block wheels. Never use a jack to support machine.
- Always use proper tools or equipment for job at hand.
- Use extreme caution when making adjustments.
- Follow torque chart in owners manual when tightening bolts and nuts.
- Never use your hands to locate a hydraulic leak on attachments. Use a small piece of cardboard or wood. Hydraulic fluid escaping under pressure can penetrate skin.
- Openings in skin and minor cuts are susceptible to infection from hydraulic fluid.
Without immediate medical treatment, serious infection and reactions can occur.
- When disconnecting hydraulic lines, shut off hydraulic supply and relieve all hydraulic pressure.
- Replace **all shields** and **guards** after servicing and before moving.
- After servicing, be sure all tools, parts and service equipment are removed.
- Do not allow grease or oil to build up on any steps or platform.
- When replacing bolts, refer to owners manual.
- Refer to bolt torque chart in owners manual for head identification marking.
- Where replacement parts are necessary for periodic maintenance and servicing, genuine factory replacement parts must be used to restore your equipment to original specifications. Manufacturer will not claim responsibility for use of unapproved parts or accessories and other damages as a result of their use.
- If equipment has been altered in any way from original design, manufacturer does not accept any liability for injury or warranty.
- A fire extinguisher and first aid kit should be kept readily accessible while performing maintenance on this equipment

BOLT TORQUE



TORQUE SPECIFICATION

Torque figures indicated are valid for non-greased or non-oiled threads and heads unless otherwise specified. Therefore, do not grease or oil bolts or capscrews unless otherwise specified in this manual. When using locking elements, increase torque values by 5%.

* GRADE or CLASS value for bolts and capscrews are identified by their head markings.

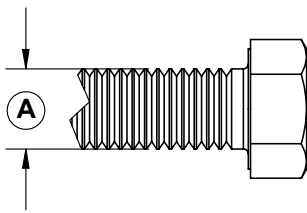
BOLT TORQUE DATA FOR STANDARD NUTS, BOLTS, AND CAPSCREWS

Tighten all bolts to torques specified in chart unless otherwise noted. Check tightness of bolts periodically, using bolt chart as guide. Replace hardware with same grade bolt.

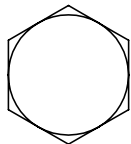
NOTE: Unless otherwise specified, high-strength Grade 5 hex bolts are used throughout assembly of equipment.

Bolt Torque for Standard bolts *						
"A"	GRADE 2		GRADE 5		GRADE 8	
	lb-ft	(N.m)	lb-ft	(N.m)	lb-ft	(N.m)
1/4"	6	(8)	9	(12)	12	(16)
5/16"	10	(13)	18	(25)	25	(35)
3/8"	20	(27)	30	(40)	45	(60)
7/16"	30	(40)	50	(70)	80	(110)
1/2"	45	(60)	75	(100)	115	(155)
9/16"	70	(95)	115	(155)	165	(220)
5/8"	95	(130)	150	(200)	225	(300)
3/4"	165	(225)	290	(390)	400	(540)
7/8"	170	(230)	420	(570)	650	(880)
1"	225	(300)	630	(850)	970	(1310)

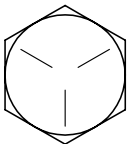
Bolt Torque for Metric bolts *						
"A"	CLASS 8.8		CLASS 9.8		CLASS 10.9	
	lb-ft	(N.m)	lb-ft	(N.m)	lb-ft	(N.m)
6	9	(13)	10	(14)	13	(17)
7	15	(21)	18	(24)	21	(29)
8	23	(31)	25	(34)	31	(42)
10	45	(61)	50	(68)	61	(83)
12	78	(106)	88	(118)	106	(144)
14	125	(169)	140	(189)	170	(230)
16	194	(263)	216	(293)	263	(357)
18	268	(363)	--	--	364	(493)
20	378	(513)	--	--	515	(689)
22	516	(699)	--	--	702	(952)
24	654	(886)	--	--	890	(1206)



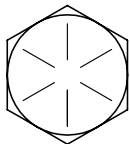
GRADE-2



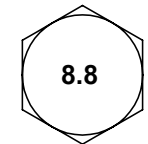
GRADE-5



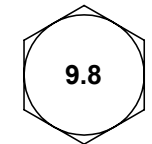
GRADE-8



CLASS 8.8



CLASS 9.8



CLASS 10.9



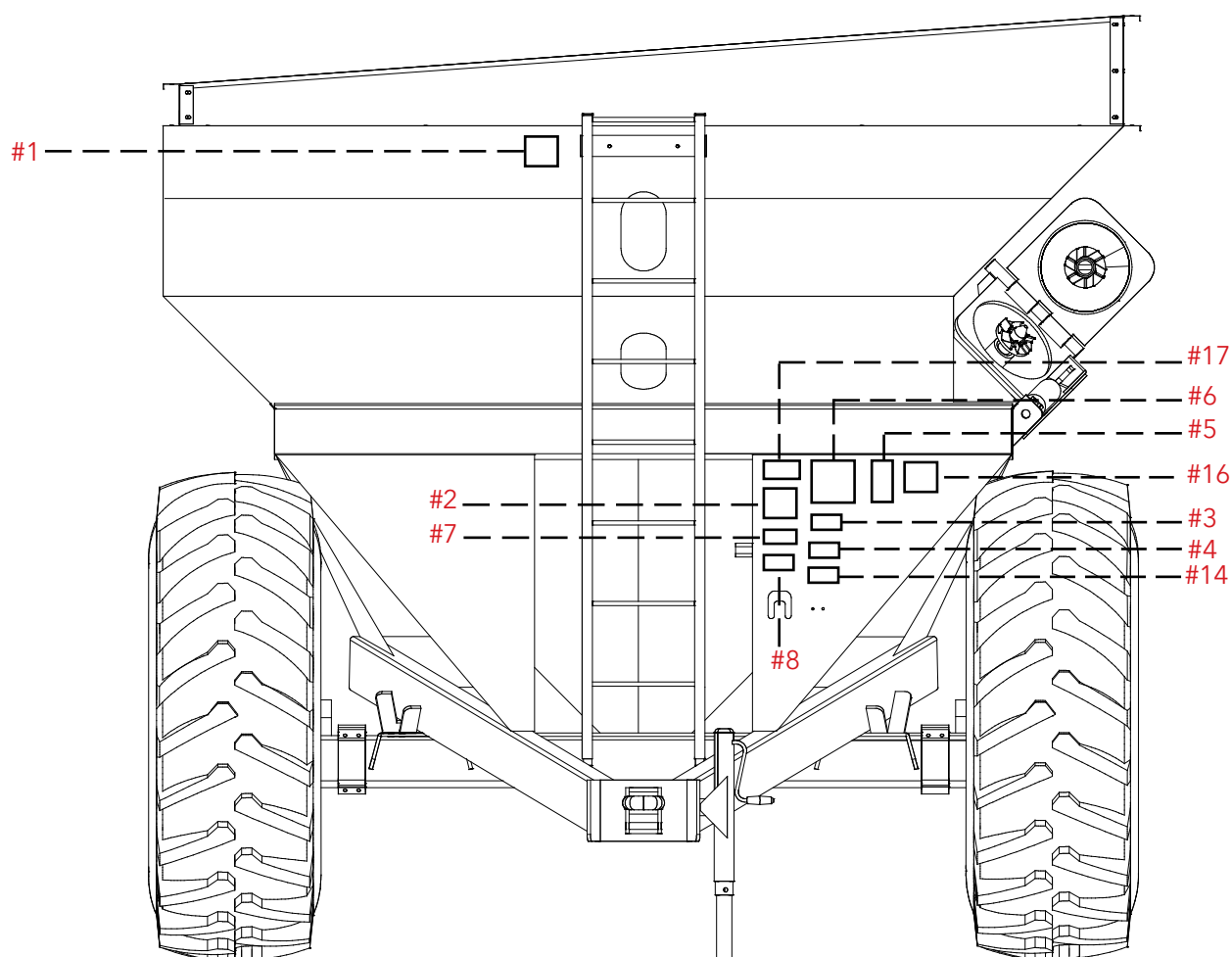
WHEEL BEARING ADJUSTMENT

1. Tighten castle or slotted hex nut to initial torque indicated on chart while turning hub in both directions to insure all bearing surfaces are in contact.
2. Back nut off and repeat step #1.
3. Back nut off, do not allow hub to turn.
4. Tighten nut to final torque indicated on chart.
5. Install cotter pin, if needed loosen or tighten nut to the next closest locking slot.
6. Check hub for end play.
7. If end play can be felt, start over and readjust bearings. If end play is felt again, try readjusting with a different castle or slotted hex nut.
8. The bearings are set correctly when no end play can be felt after adjustment.

Hub	Initial Toque	Final Torque
10 bolt	90 ft/ lbs	60 ft/lbs

SAFETY SIGN LOCATIONS

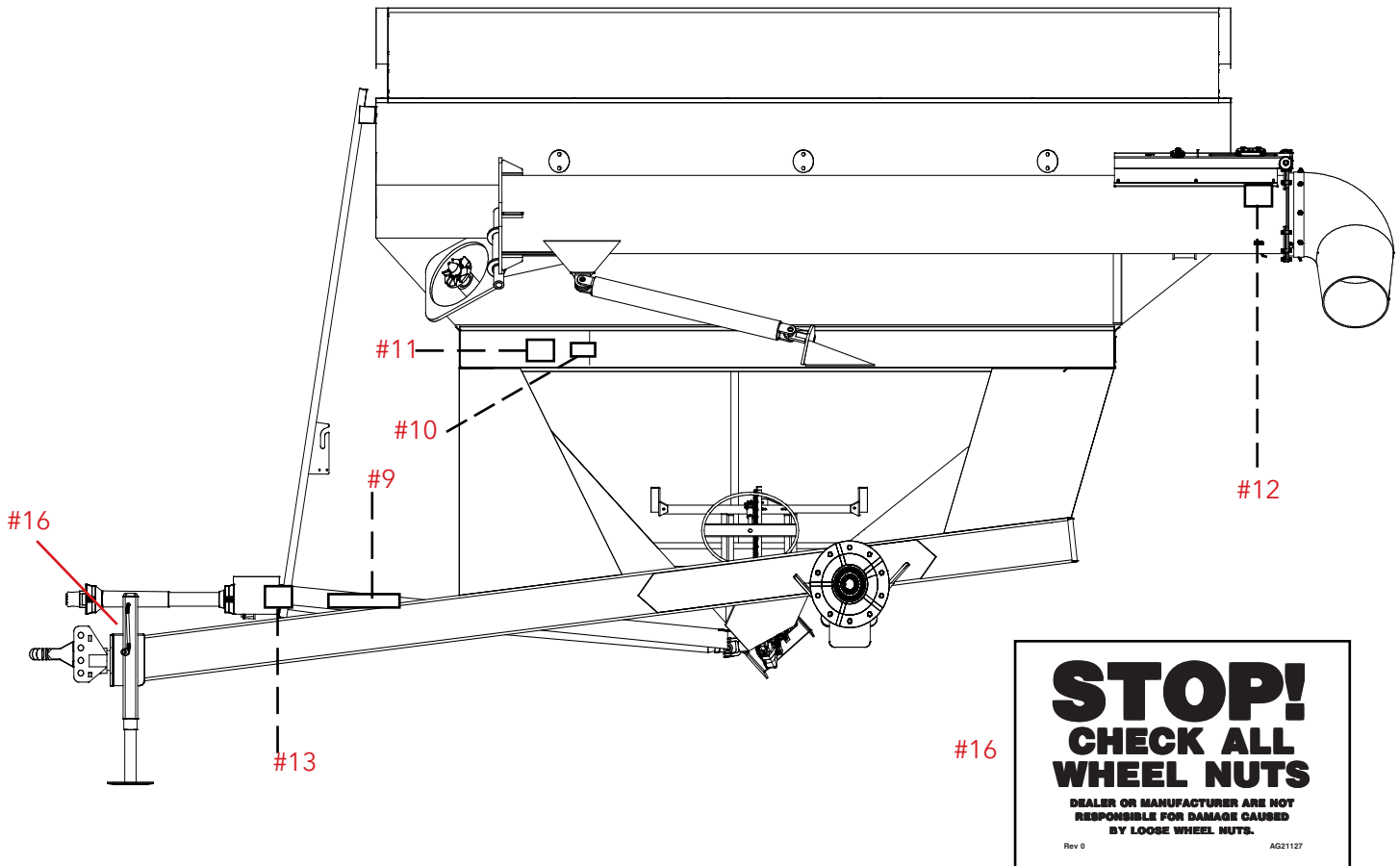
Types of safety sign and locations on equipment are shown in illustration below. Good safety requires that you familiarize yourself with various safety signs, type of warning, and area or particular function related to that area, that requires your SAFETY AWARENESS.



- #1 DANGER - Do not enter grain tank when auger is running!
- #2 DANGER - Keep off ladder while machine is being moved or in operation!
- #3 WARNING - Read and understand the operator's manual!
- #4 WARNING - Keep hands and clothing away from moving parts!
- #5 DANGER - Never play in or on grain! Farm safety just 4 kids!
- #6 DANGER - Electrocutation can occur without direct contact with power lines !
- #7 WARNING - Read manual, keep all shields in place, cleaning or clearing a clogged machine, keep hands, feet, and clothing away, do not stand or climb on machine, no riders!
- #8 WARNING - Avoid bodily injuries from hydraulic oil under pressure.

SAFETY SIGN LOCATIONS

Types of safety sign and locations on equipment are shown in illustration below. Good safety requires that you familiarize yourself with various safety signs, type of warning, and area or particular function related to that area, that requires your SAFETY AWARENESS.

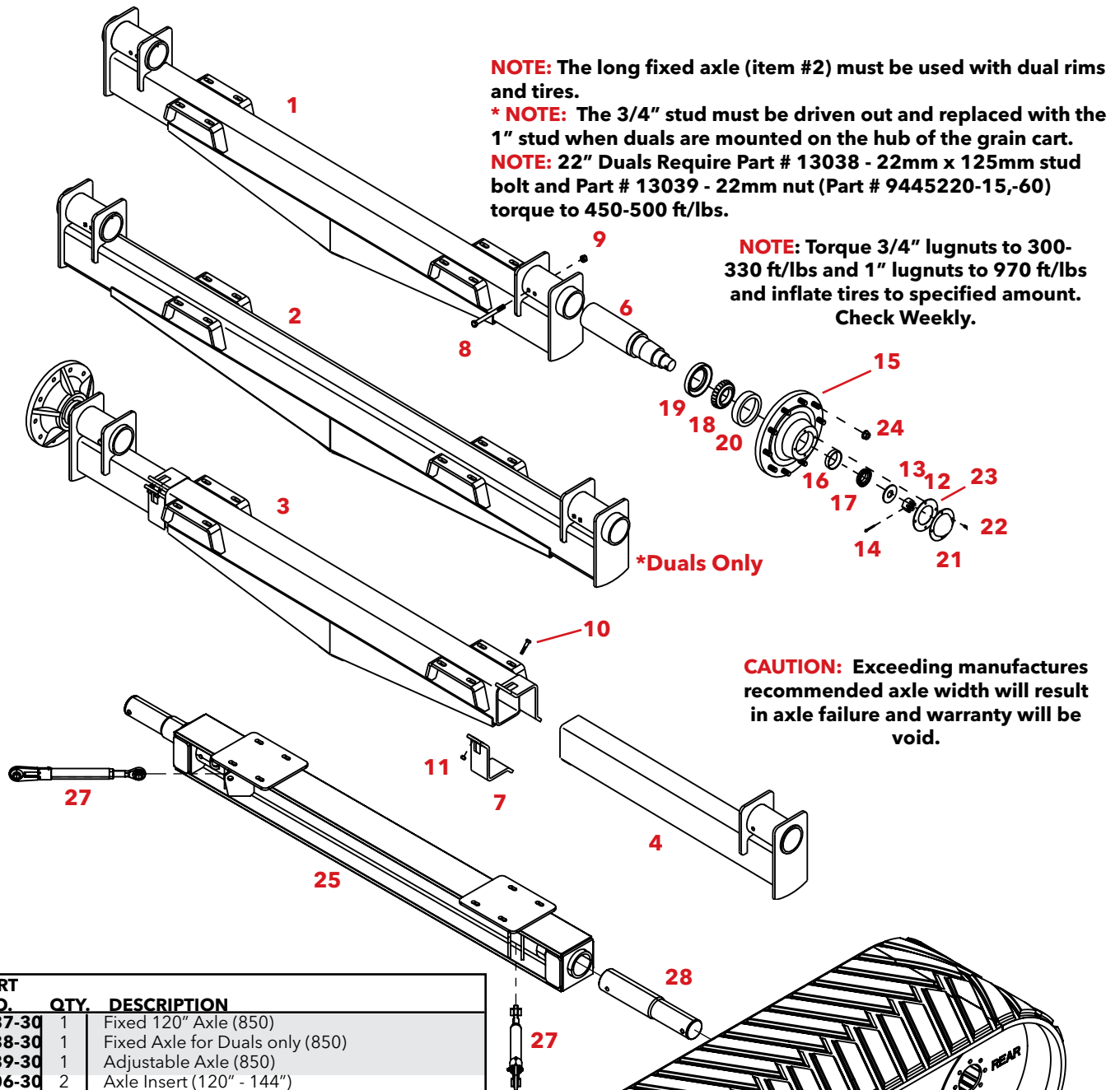


- | | | |
|-----|-------------|--|
| # 9 | DANGER - | This decal is on pto shaft, Guard is missing do not operate! |
| #10 | DANGER - | Pinch - point keep hands and clothing away from moving parts! |
| #11 | WARNING - | Keep all persons and objects clear while any part of this machine is in motion! |
| #12 | DANGER - | Electrocutation can occur without direct contact with power lines! |
| #13 | DANGER - | Rotating driveline! |
| #14 | WARNING - | Do not exceed 20 MPH when towing Grain Cart |
| #15 | Decal Kit - | Decals #1 - #14 are available as a kit. |
| #16 | STOP - | Check all wheel nuts. Dealer or Manufacturer are not responsible for damage caused by loose wheel nuts. (AG21127, Qty 2) |
| #17 | WARNING - | For increased life of the track system & grain cart, avoid sharp turns.(AG21185, Qty 1) |

Decal order number

AG21064

Decal #16 & #17 are not part of the decal kit.



NOTE: The long fixed axle (item #2) must be used with dual rims and tires.

*** NOTE:** The 3/4" stud must be driven out and replaced with the 1" stud when duals are mounted on the hub of the grain cart.

NOTE: 22" Duals Require Part # 13038 - 22mm x 125mm stud bolt and Part # 13039 - 22mm nut (Part # 9445220-15,-60) torque to 450-500 ft/lbs.

NOTE: Torque 3/4" lugnuts to 300-330 ft/lbs and 1" lugnuts to 970 ft/lbs and inflate tires to specified amount. Check Weekly.

***Duals Only**

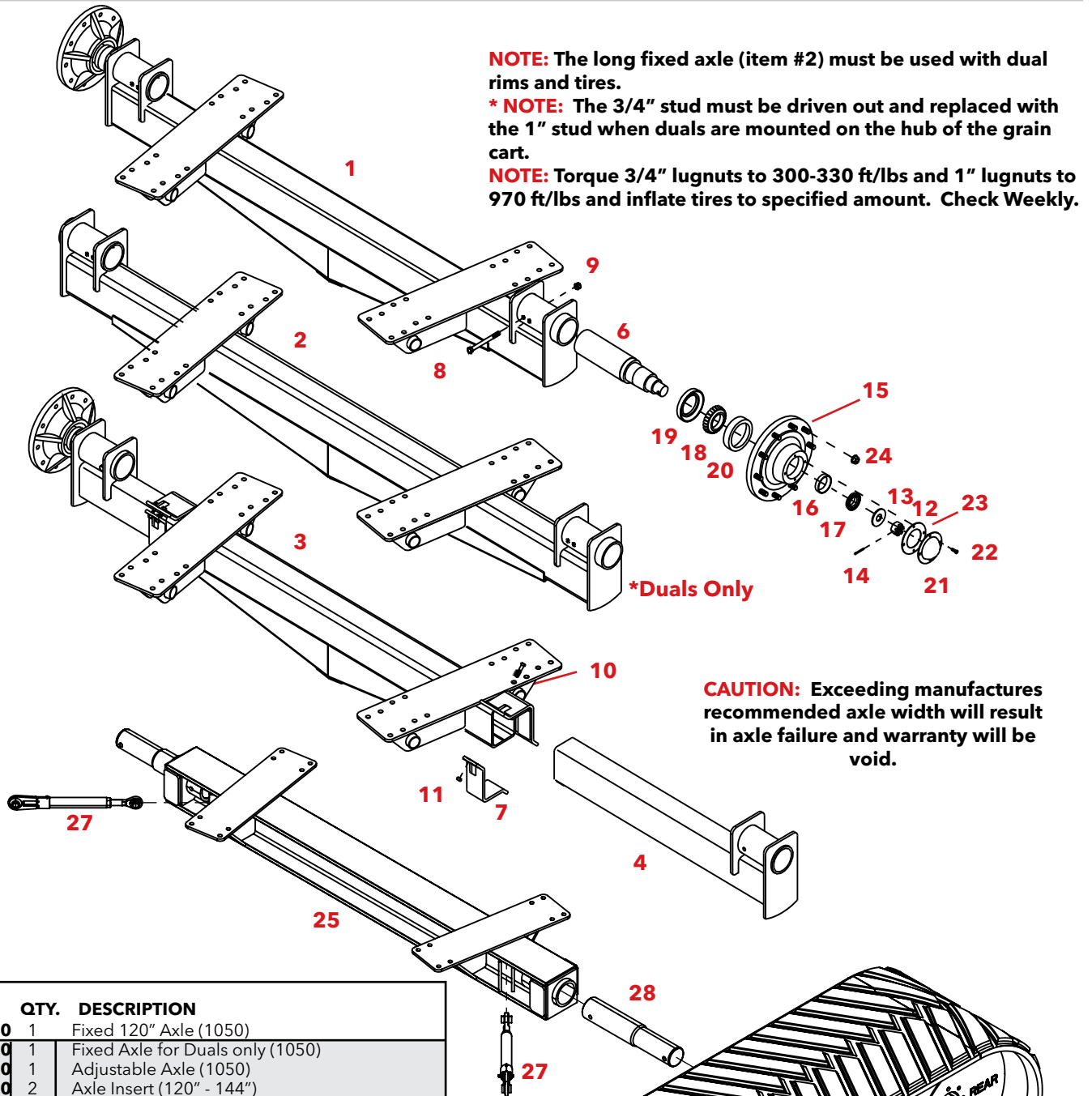
CAUTION: Exceeding manufactures recommended axle width will result in axle failure and warranty will be void.

REF. NO.	PART NO.	QTY.	DESCRIPTION
1.	12787-30	1	Fixed 120" Axle (850)
2.	12788-30	1	Fixed Axle for Duals only (850)
3.	12789-30	1	Adjustable Axle (850)
4.	09206-30	2	Axle Insert (120" - 144")
-	14578-30	2	Axle Insert (120" - 144") (not shown)
6.	09204	2	Axle Spindle
7.	09214-30	2	Axle Clamps (850)
8.	04836	2	5/8"-11 UNC x 7" Hex Head Bolt
9.	02587	2	5/8"-11 UNC Nylon Insert Locknut
10.	12036	8	1/2"- 13 UNC x 2-1/2" Hex Head Bolt (Gr. 8)
11.	02178	8	1/2"-13 Nylon Insert Locknut
12.	09445	1	2"-12 UNF Castle Nut
13.	09444	1	2-1/16" ID x 4" OD x 1/4" Washer
14.	09446	1	3/8" x 3" Cotter Pin
15.	07861	-	Replacement 3/4"NF x 2-3/4" Stud Bolt
*.	10827	-	Replacement 1"NF x 4" Hex (Duals ONLY)
	5938-30	2	Hub Assembly (Includes items16-23)
16.	09448	1	Outer Bearing Race (HM212011)
17.	09450	1	Outer Bearing (HM 212049)
18.	09449	1	Inner Bearing (HM 218248)
19.	09452	1	Inner Grease Seal (CR43771) Non Scale
*	09442	1	Inner Grease Seal Scale (not incl w/ 5938-30)
20.	09447	1	Inner Bearing Race (HM218210)
21.	09451	1	Dust Cap
22.	04305	4	5/16-18 UNC x 1/2" Hex Head Bolt (Gr.5)
23.	12525	2	Gasket
24.	07435	20	3/4"-16 UNF Lug Nut
-	----	20	1"-16UNF Lug Nut w/ washer (Incl.with10827 stud bolt)

REF. NO.	PART NO.	QTY.	DESCRIPTION
25.	14807	1	Cross Axle
26.	14809	1	Track Carriage LH w/ Belt
-	14810	1	Track Carriage RH w/ Belt (Not Shown)
27.	14811	1	Tension Bar Assembly
28.	14812	1	Axle Pivot Shaft

Please order replacement parts by **PART NO.** and **DESCRIPTION.**

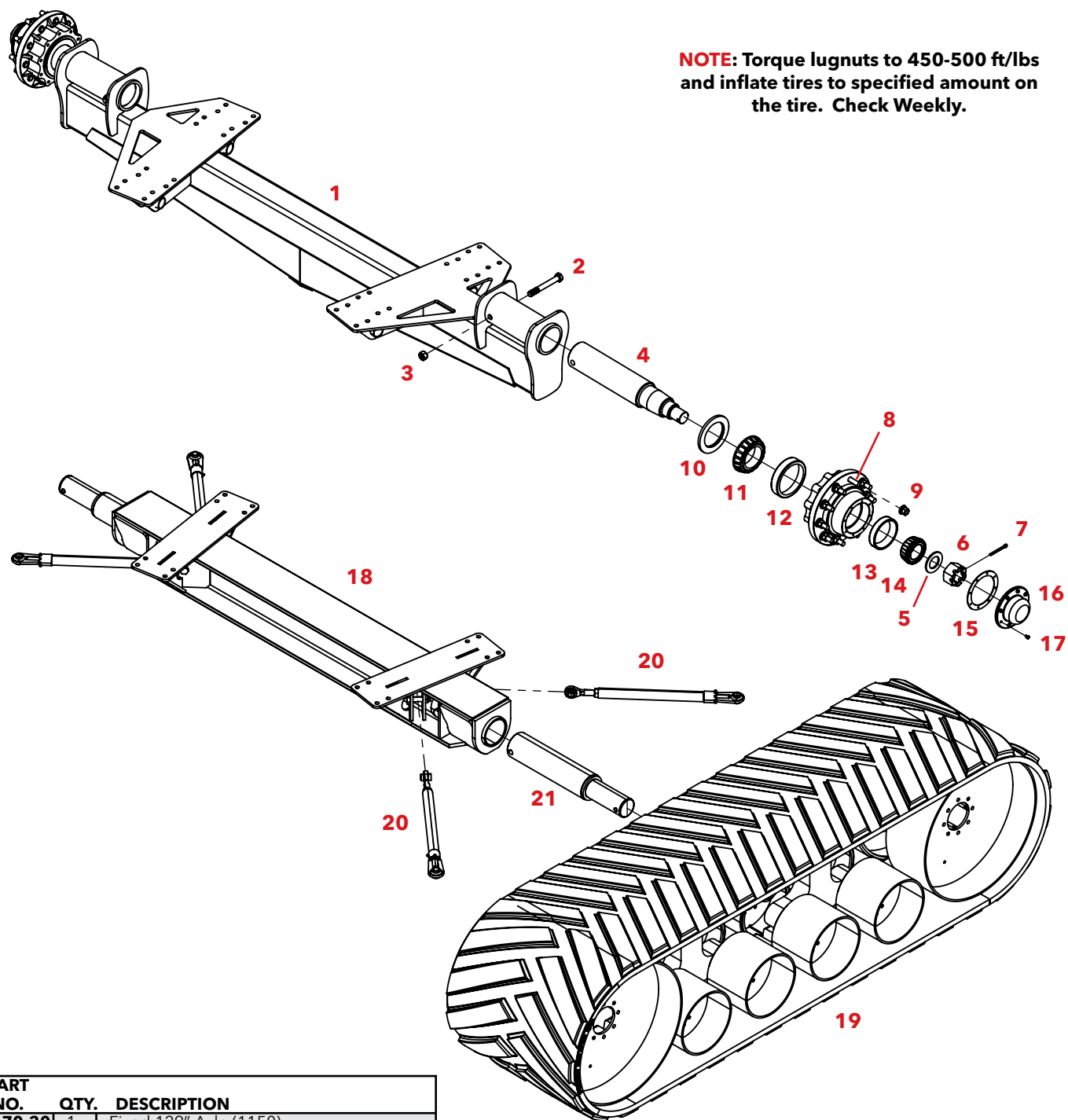
1050 AXLE ASSEMBLY



REF. NO.	PART NO.	QTY.	DESCRIPTION
1.	12777-30	1	Fixed 120" Axle (1050)
2.	12792-30	1	Fixed Axle for Duals only (1050)
3.	12791-30	1	Adjustable Axle (1050)
4.	09206-30	2	Axle Insert (120" - 144")
-	14578-30	2	Axle Insert (120" - 160") (Not Shown)
6.	09204	2	Axle Spindle
7.	11712-30	2	Axle Clamps (1050)
8.	04836	2	5/8"-11 UNC x 7" Hex Head Bolt
9.	02587	2	5/8-11 UNC Nylon Insert Locknut
10.	12036	8	1/2" - 13 UNC x 2-1/2" Hex Head Bolt (Gr. 8)
11.	02178	8	1/2"-13 Nylon Insert Locknut
12.	09445	1	2"-12 UNF Castle Nut
13.	09444	1	2-1/16" ID x 4" OD x 1/4" Washer
14.	09446	1	3/8" x 3" Cotter Pin
15.	07861	-	Replacement 3/4"NF x 2-3/4" Stud Bolt
*.	10827	-	Replacement 1"NF x 4" Hex (Duals ONLY)
-	5938-30	2	Hub Assembly(Includes items16-23)
16.	09448	1	Outer Bearing Race (HM212011)
17.	09450	1	Outer Bearing (HM 212049)
18.	09449	1	Inner Bearing (HM 218248)
19.	09452	1	Inner Grease Seal (CR43771) Non Scale
*	09442	1	Inner Grease Seal Scale (not incl w/ 5538-30)
20.	09447	1	Inner Bearing Race (HM218210)
21.	09451	1	Dust Cap
22.	04305	4	5/16-18 UNC x 1/2" Hex Head Bolt (Gr.5)
23.	12525	2	Gasket
24.	07435	20	3/4"-16 UNF Lug Nut
-	----	20	1"-16UNF Lug Nut w/ washer (Incl.with10827 stud bolt)

REF. NO.	PART NO.	QTY.	DESCRIPTION
25.	14808	1	Cross Axle
26.	14809	1	Track Carriage LH w/ Belt
-	14810	1	Track Carriage RH w/ Belt (Not Shown)
27.	14811	1	Tension Bar Assembly
28.	14812	1	Axle Pivot Shaft

Please order replacement parts by **PART NO.** and **DESCRIPTION.**



REF. NO.	PART NO.	QTY.	DESCRIPTION
1.	14470-30	1	Fixed 129" Axle (1150)
2.	14496	2	1"-8 UNC x 8" Hex Head Bolt GR.5
3.	12477	2	1" NC Nylon Insert Locknut
4.	14489	2	Axle Spindle
5.	14017	1	2-1/16" ID x 4" OD x 1/4" Washer
6.	13899	1	2"-12 UNF Castle Nut
7.	13911	1	3/8" x 3" Cotter Pin
8.	14026	-	Replacement M22 x 4" Stud Bolt
9.	15830	20	Disc-Lock Nut, M22 X 1.5
	6053-30	2	Hub Assembly (Includes items 10-17)
10.	14494	1	Inner Grease Seal (POS5507556SA)
11.	14492	1	Inner Bearing (71455, Timken)
12.	14554	1	Inner Bearing Cup (71750, Timken)
13.	14553	1	Outer Bearing Cup (653, Timken)
14.	14493	1	Outer Bearing (663, Timken)
15.	14025	2	Gasket
16.	13901	1	Dust Cap
17.	04305	4	5/16-18 UNC x 1/2" Hex Head Bolt (Gr.5)

REF. NO.	PART NO.	QTY.	DESCRIPTION
18.	14813	1	Cross Axle
19.	14814	1	Track Carriage LH w/ Belt
	14815	1	Track Carriage RH w/ Belt (Not Shown)
20.	14816	4	Tension Bar Assembly
21.	14817	2	Axle Pivot Shaft

Please order replacement parts by **PART NO.** and **DESCRIPTION.**

AUGER ASSEMBLY

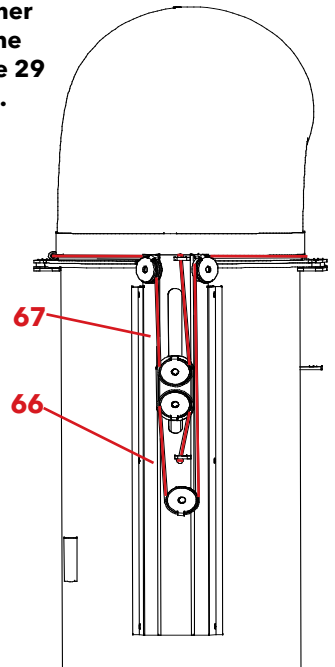
Parts are available
in 4 colors

?-05 = Yellow
?-10 = Red
?-20 = Green
?-42 = Blue

NOTE: Be sure to check
and lubricate the inner
gate when doing the
maintenance on page 29
or every 20 hours.

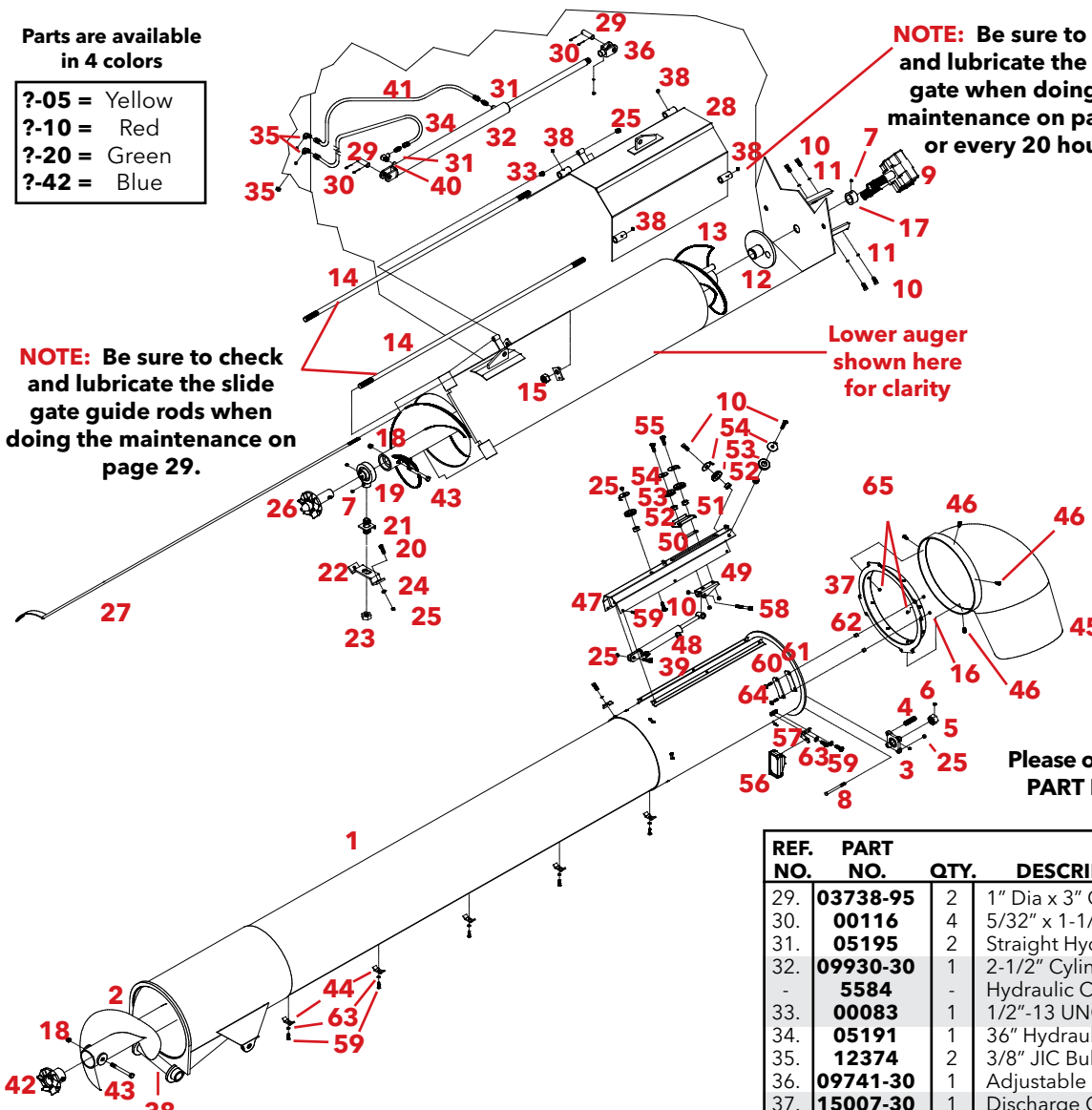
NOTE: Be sure to check
and lubricate the slide
gate guide rods when
doing the maintenance on
page 29.

Lower auger
shown here
for clarity



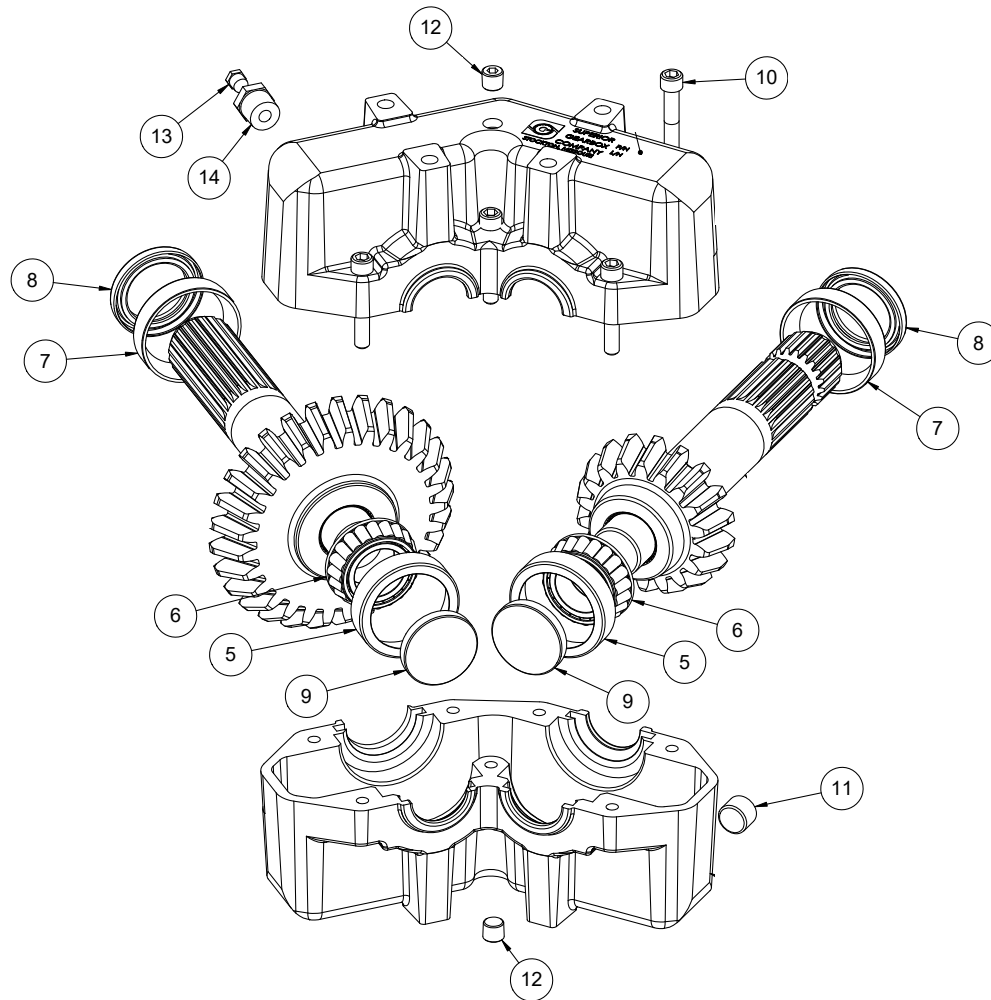
Cable Routing

Please order replacement parts by
PART NO. and DESCRIPTION.



REF. NO.	PART NO.	QTY.	DESCRIPTION
1.	12517-?	1	Outer Auger Tube
-	AG21071	1	Decal "Open/Close"
2.	12713-30	1	Outer Auger Flighting
3.	10634	1	Flange Bearing
4.	09168	4	Upper Auger Spring
5.	01922	1	1-1/2"-12 UNF Hex Nut w/ Set Screw Hole
6.	01923	1	1/4" Socket Hd. Cup Point Set Screw x 1/4"
7.	00789	2	3/8"-16 UNC x 3/8" Socket Head Set Screw
8.	01975	4	1/2"NC x 5" Hex Head Bolt (Gr. 5)
9.	10607	1	Gear Box
10.	01254	15	1/2"-13 UNC x 1-1/2" Hex Head Bolt (Gr.5)
11.	00084	4	1/2" Lockwasher
12.	10623-30	1	Lower Drive
13.	12712-30	1	Lower Auger Flighting
14.	12476	2	Threaded Slide Rod
15.	12477	4	1"-8 UNC Nylon Insert Locknut
16.	02592	8	3/8"-16 Nylon Insert Locknut
17.	13641-95	1	Gearbox Collar
18.	02961	2	3/4"-10 UNC Nylon Insert Locknut
19.	09185	1	2" Hanger Bearing
20.	00482	2	1/2"-13 UNC x 1 3/4" Hex Head Bolt (Gr.5)
21.	09195-30	1	Hanger Bearing Mount
22.	10624-30	1	Hanger Bearing Plate
23.	07412	1	1 1/4"-12 UNF Jam Nut
24.	00085	6	1/2" Flatwasher
25.	02178	16	1/2"-13 UNC Nylon Insert Locknut
26.	12233-30	1	Male Auger Connection
27.	10604-30	1	Gauge Rod
28.	12781-30	1	Inner Door

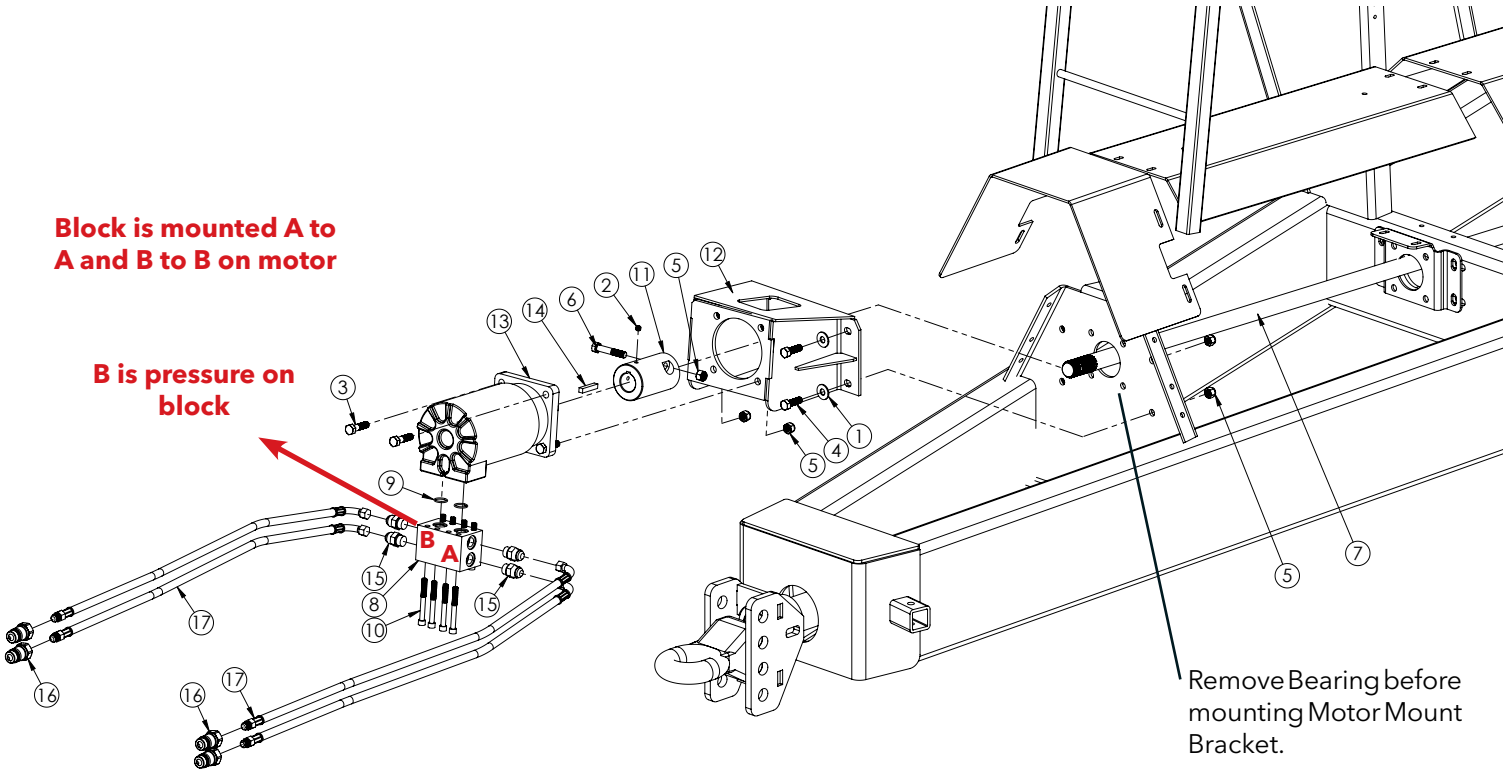
REF. NO.	PART NO.	QTY.	DESCRIPTION
29.	03738-95	2	1" Dia x 3" Cylinder Pin
30.	00116	4	5/32" x 1-1/2" Cotter Pin
31.	05195	2	Straight Hyd. Ftg. 3/8" MPT x 3/8" JIC
32.	09930-30	1	2-1/2" Cylinder x 30" Stroke
-	5584	-	Hydraulic Cylinder Seal Repair Kit (not shown)
33.	00083	1	1/2"-13 UNC Hex Head Nut
34.	05191	1	36" Hydraulic Hose
35.	12374	2	3/8" JIC Bulkhead 45° Elbow Ftg. W/Nut
36.	09741-30	1	Adjustable Cylinder Clevis End
37.	15007-30	1	Discharge Chute Drive Ring
38.	04642	5	Grease Zerk
39.	00482	1	1/2"-13UNC x 1 3/4" Hex Head Bolt (Gr.5)
40.	05215	1	3/8" MPT x 3/8" FPT Hyd. Elbow Fitting
41.	05190	1	48" Hydraulic Hose
42.	12028	1	Outer Drive Casting
43.	10525	2	3/4"-10 UNC x 6" Hex Head Bolt Gr. 8
44.	09218-95	7	Hose Keeper, 2 Hose (plated)
45.	14935	1	Discharge Chute, One Piece
-	15608	-	Optional Discharge Chute Extension
46.	03169	8	5/16" x 1-1/2" Truss Head Bolt
47.	12515-30	1	Cylinder mount
48.	12522-30	1	Cylinder
-	5222	-	Hydraulic Cylinder Seal Repair Kit (not shown)
49.	12513-30	1	Trolley Bottom
50.	12514-95	1	Trolley Spacer
51.	12512-30	1	Trolley Top
52.	09283	5	Sheave Bushing
53.	09282	5	Plastic Sheave
54.	12531-95	5	Cable Retainer Washer
55.	01253	2	1/2"-13UNC x 2" Hex Head Bolt (Gr.5)
56.	14926	1	Discharge Light
57.	12555-30	1	Light Bracket
58.	05290	1	1/2"-13UNC x 3 1/4" Hex Head Bolt (Gr.5)
59.	01899	15	3/8"-16UNC x 3/4" Hex Head Bolt (Gr.5)
60.	12549-30	4	Mount Ring Retainer Backplate
61.	12550	4	Plastic Mount Ring Spacer
62.	12667-95	8	Mount Ring Bushing
63.	00060	9	3/8" Lockwasher
64.	00908	8	3/8"-16 UNC x 1 3/4" Hex Head Bolt (Gr.5)
65.	02802	8	5/16"-18UNC Nylon Locknut
66.	12528	1	Long Cable
67.	12529	1	Short Cable



DEMCO Replacement Parts for Gearbox # 10607

ITEM	PART #	DESCRIPTION
-	13965	SHIM (not shown)
5.	13966	RACE
6.	13967	BEARING
7.	13968	RACE
-	13969	BEARING (not shown)
8.	13970	SEAL
9.	13971	SEAL, END CAP
11.	13973	PLUG, 1/2"
12.	13974	PLUG, 1/4"
13.	13975	PLUG, 1/8", VENT
Please order replacement parts by PART NO. and DESCRIPTION.		

HYDRAULIC DRIVE ASSEMBLY



Hydraulic Block Installation

- Lubricate O-Rings (9) and Cap Screws (10)
- Assemble Block (8) on Motor (13)
- Finger tighten Cap Screws (10)
- Tighten 4 cap screws on Port B in Fig. 1 to 25-29 ft-lb.
- Repeat on Port A

DO NOT exceed 40 gpm of oil to orbit motor

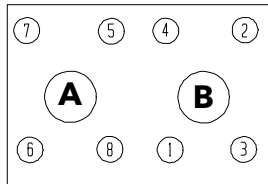
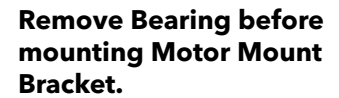


Figure 1

ITEM	PART #	DESCRIPTION	QTY.	ITEM	PART #	DESCRIPTION	QTY.
1.	00085	1/2" Flat Washer	4	10.	13790	Replacement Cap Screw 3-1/2"	8
2.	00789	3/8" x 3/8" Socket Head Set Screw	2	11.	13699-30	Driveshaft Coupling	1
3.	01253	1/2" x 2.00" Bolt (Gr.5)	4	12.	13781-30	Hydraulic Motor Mounting Bracket	1
4.	01254	1/2" x 1-1/2" Bolt (Gr.5)	4	13.	13782	Hydraulic Motor (Includes #14)	1
5.	02178	1/2" Nylon Insert Locknut	9	-	13628	Seal Repair Kit (not shown)	-
6.	04797	1/2" x 2-3/4" Bolt (Gr.5)	1	14.	13535	Replacement 3/8" x 2" Square Key	1
7.	13396	Drive Shaft	1	15.	13785	FTG Str #10 Male O-Ring to #10 Male JIC	4
8.	13499	Hydraulic Block w/ Check Valve (Incl. #9 & 10)	1	16.	13786	Quick Coupler	4
-	13791	Check Valve	1	17.	13787	5/8" Hydraulic Hose	4
9.	13789	Replacement O-Ring	2	-	05198	Rubber Quick Coupler Cover (Not Shown)	4
Please order replacement parts by PART NO. and DESCRIPTION.				Please order replacement parts by PART NO. and DESCRIPTION.			



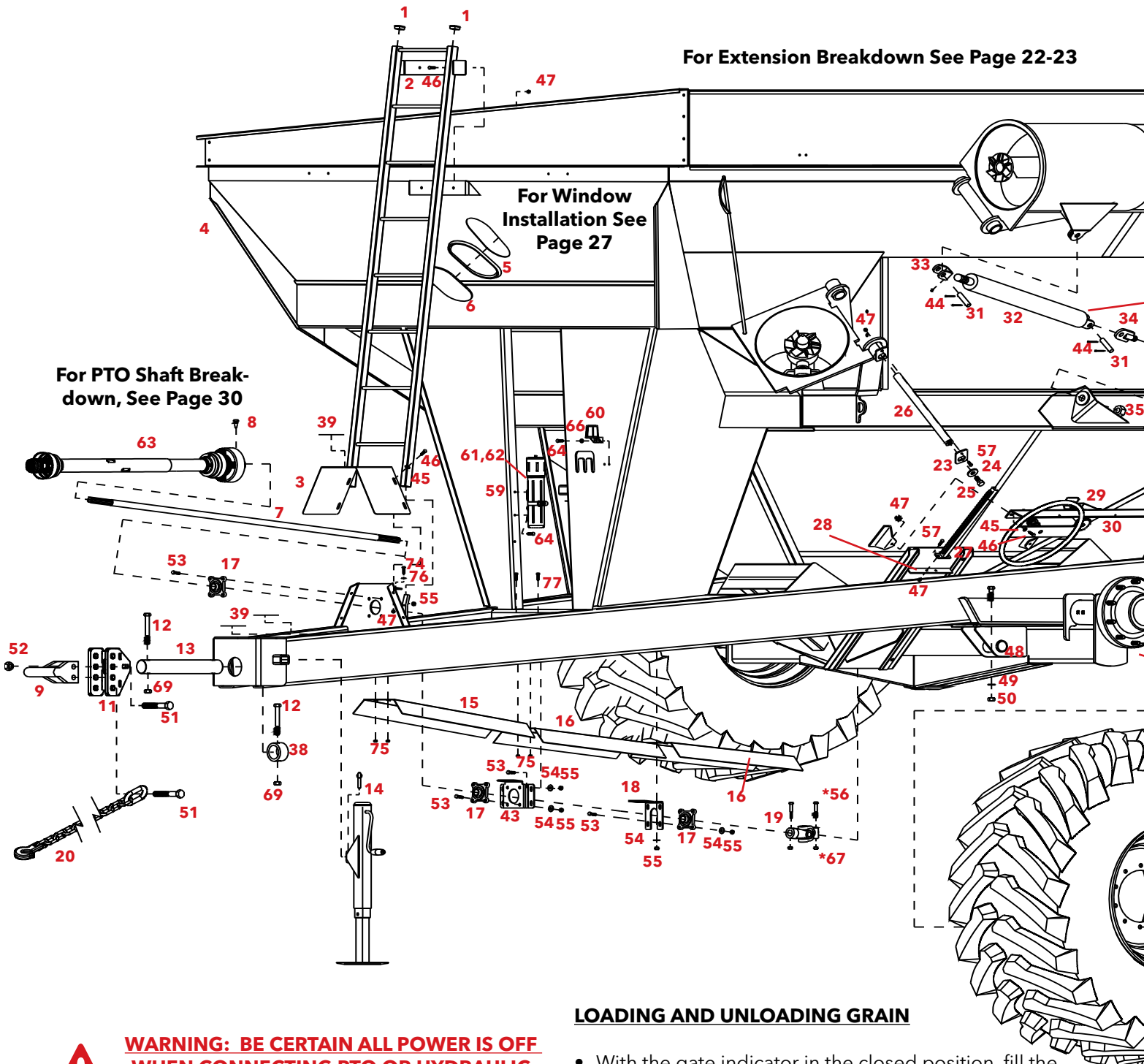
**DO NOT exceed
75 gpm of oil to
FS motor**

Adjust tractor hydraulics below **75 GPM** before connecting hydraulic motor on grain cart.

Warranty will be void if over speeding occurs.
Fill motor with oil before running the 1st time.
Case Drain Line MUST be connected to Zero
Return Port on Tractor before running
Hydraulic Motor.

ITEM	PART #	DESCRIPTION	QTY.
13	**	Replacement O-Ring	-
14	15273-30	FS340 Hydraulic Motor	1
15	13781-30	Hydraulic Motor Mount	1
16	15234	3/8" x 128" Hydraulic Hose	1
17	15235	FTG Str #6 Male JIC to #4 British PP Male	1
18	15236	Case Drain Quick Coupler	1
19	15237	FTG Str #12 Male O-Ring to #10 Male JIC	6
-	05198	Rubber Quick Coupler Cover (Not Shown)	6
Please order replacement parts by PART NO. and DESCRIPTION.			

GRAIN CART ASSEMBLY

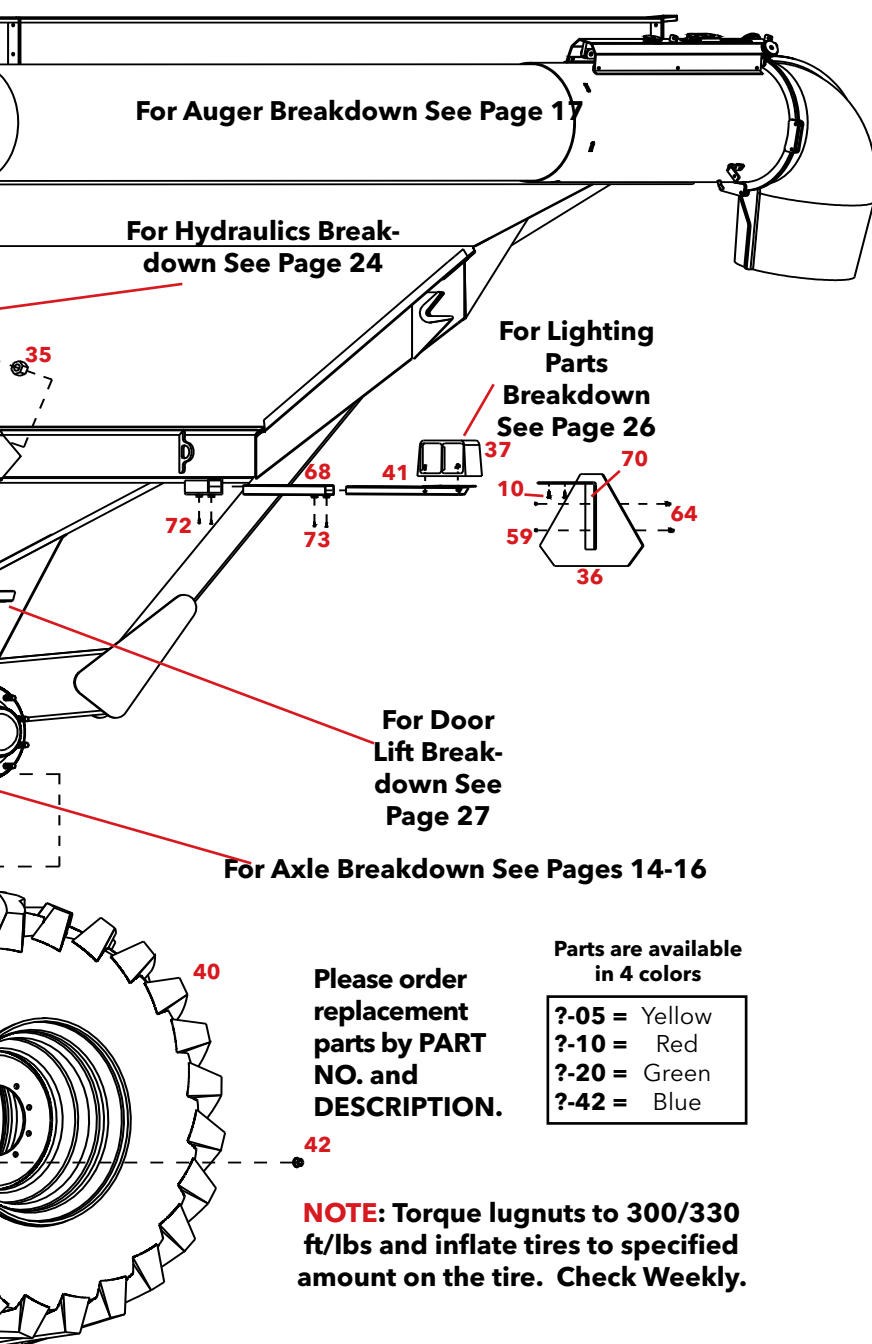


WARNING: BE CERTAIN ALL POWER IS OFF WHEN CONNECTING PTO OR HYDRAULIC LINES TO TRACTOR

- Connect Grain Cart to tractor using a good quality hitch pin. Attach a safety chain.
- Attach power take-off shaft to tractor. Check tractor drawbar and adjust to allow clearance.
- Raise jack stand and place to rear storage position.
- Make sure no debris is in the grain cart.
- Attach hydraulic lines to tractor.
- Connect lighting hook-up to tractor.

LOADING AND UNLOADING GRAIN

- With the gate indicator in the closed position, fill the box with grain.
- With the PTO disengaged, extend auger.
- Start PTO at a **slow rate of speed** until the upper and lower drives are engaged.
- Increase PTO speed and open the inner gate halfway. When grain begins to flow, open gate to full position.
- Once grain stops flowing, return gate to closed position.
- Never exceed 1000 RPM on the system.
- Never fill grain cart unless inner gate is closed.



REF. NO.	PART NO.	QTY.	DESCRIPTION
1.	03159	2	Square Cap Plug
2.	11995-30	1	Ladder
3.	10609-30	1	PTO Shaft Guard Step
4.	12666-?	1	Undercarriage/Box for 1050 Grain Cart
-	12782-?	1	Undercarriage/Box for 850 Grain Cart
-	14498-?	1	Undercarriage/Box for 1150 Grain Cart
5.	07310	1	Rubber Grommet for Window
6.	07276	1	Window
7.	13396	1	Drive Shaft
8.	13522	1	Tapered Lock Pin
9.	13479-30	1	Forged Hitch Base, Austempered, Cat. 3 or 4
-	9440126	-	Bull Pull w/Bolts Cat 3/4 (optional)
10.	07594	2	3/8" x 1" Thread Cutting Bolt
11.	12346-30	1	Pintle Ring Mount
12.	11698	2	7/8" x 5 1/2" Hex Head Bolt Gr. 8
13.	10814	1	Hitch Pin
14.	09219-30	1	7000# Sidewind Jack with Mount
-	5661	-	Gear Kit
15.	10610-30	1	Front Safety Shield
16.	10611-30	2	Rear Safety Shield
17.	10633	3	35mm 4-Bolt Flange Bearing
18.	10617-30	1	Bearing Mount for Drive Shaft
19.	13397	1	Universal Joint
20.	12154	1	Safety Chain
23.	13010-30	1	Auger Pin Plate
24.	13011-95	1	Auger Pin Washer
25.	13012	1	1"-8NC x 1 1/2" Hex Head Bolt Gr. 5
26.	13013	1	Folding Pin
27.	10637-30	1	Door Lift Channel
28.	10620-30	1	Lower Outside Door
29.	10629-30	1	Door Lift Wheel
30.	11525-30	1	Door Lift Mount
31.	03738-95	2	1" x 3" Cylinder pin
32.	13876-30	1	Hydraulic Cylinder 2.75" Bore
-	6046	-	Hydraulic Cylinder Repair Kit (not shown)
33.	09741-30	1	Adjustable Cylinder End
34.	09198-30	1	Folding Cylinder Mount
35.	07412	2	1-1/4" Jam Nut
36.	12126	1	SMV Sign
37.	15271	1	Left Ag Light
-	15272	1	Right Ag Light
38.	12375-30	1	Hitch Stop Collar
39.	61681	7	1" Anti-Skid Tape
40.	09381-60	2	27 x 32 Wheel (Silver) (850/1050/1150)
-	10830-60	4	Dual Wheel (Silver) (850/1050)
-	14757-60	2	36 x 32 Wheel (Silver) (1150)
41.	11565-30	2	Light Mount
42.	07435	20	3/4"-16 UNF Lug Nut
43.	10816-30	1	Bearing Mount
44.	00116	4	5/32" x 1-1/2" Cotter Pin
45.	00059	12	3/8" Flatwasher
46.	00523	6	3/8" x 1-1/4" Hex Bolt (Gr. 5)
47.	02592	27	3/8" Nylon Insert Locknut
48.	05047	16	3/4"-10UNC x 2-1/2" Hex Head Bolt (Gr. 5)
49.	00492	16	3/4" Flatwasher
50.	02961	16	3/4"-10UNC Nylon Insert Locknut
51.	09454	3	1"-14 UNF x 6-1/2" Hex Head Bolt (Gr. 8)
52.	09455	3	1"-14 UNF Stover Locknut
53.	01254	18	1/2" x 1-1/2" Hex Head Bolt (Gr. 5)
54.	00085	20	1/2" Flatwasher
55.	02178	18	1/2" Nylon Insert Locknut
*56.	05103	2	5/8" x 3-1/2" Hex Head Bolt (incl. w/ U-Joint)
57.	00907	22	3/8" x 1" Hex Head Bolt (Gr. 5)
59.	02772	4	1/4" Nylon Insert Locknut
60.	10277	1	Electrical Plug Holder
61.	10241	1	Owner's Manual Canister
62.	10242	1	Owner's Manual Canister Bracket
63.	13394	1	1-3/4" PTO Shaft
64.	04055	4	1/4" x 1" Hex Head Bolt (Gr. 5)
65.	00639	8	1/2" x 1-1/2" Set Screw w/00640 Jam Nut
66.	00214	2	1/4" Flatwasher
*67.	02587	2	5/8" Nylon Insert Locknut (included w/ U-Joint)
68.	11568-30	2	Light Mount Receiver
69.	10678	2	7/8" Nylon Insert Locknut
70.	12468-30	1	SMV Sign Bracket
72.	00639	4	1/2" x 1 1/2" Square Head Bolt
73.	00209	4	3/8" x 1" Square Head Bolt
74.	02990	14	5/16" x 1" Hex Head Bolt
75.	02802	14	5/16" Nylon Insert Locknut
76.	00004	22	5/16" Flatwasher
77.	00685	2	5/16"UNC x 1 1/4" Hex Head Bolt (Gr. 5)

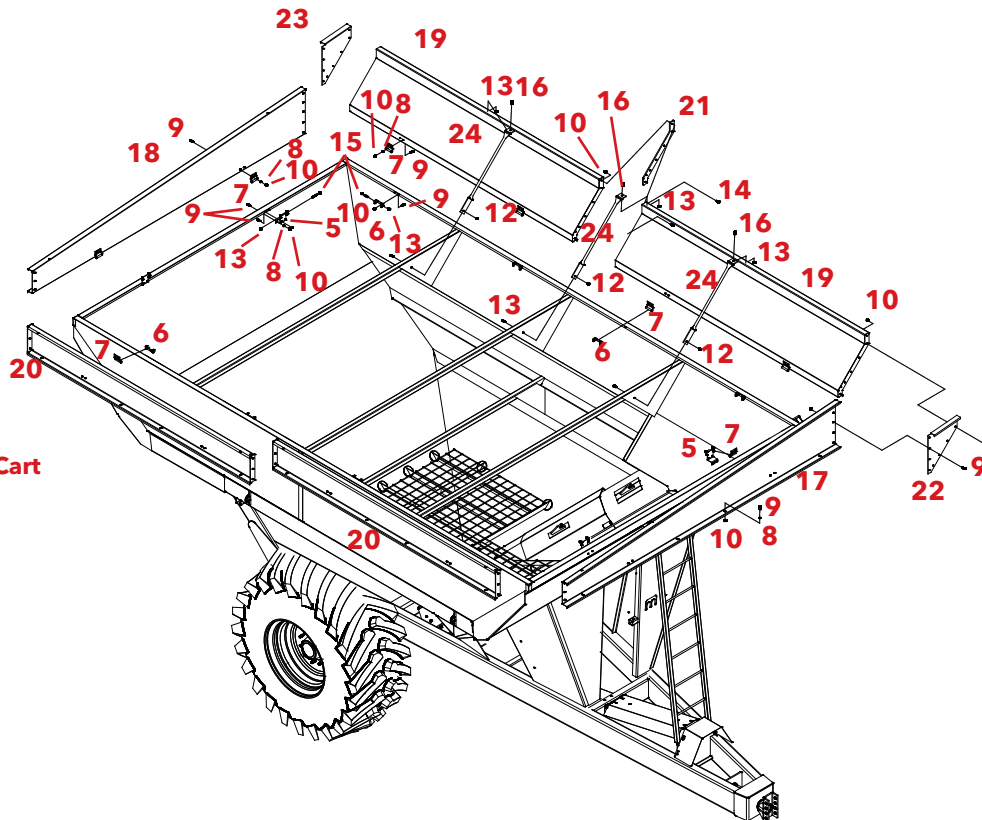
- Disengage PTO and allow it to come to a complete stop. Auger is now ready to fold to stored position.

DO NOT PULL THE GRAIN CART UNLESS THE AUGER IS IN THE STORED POSITION.

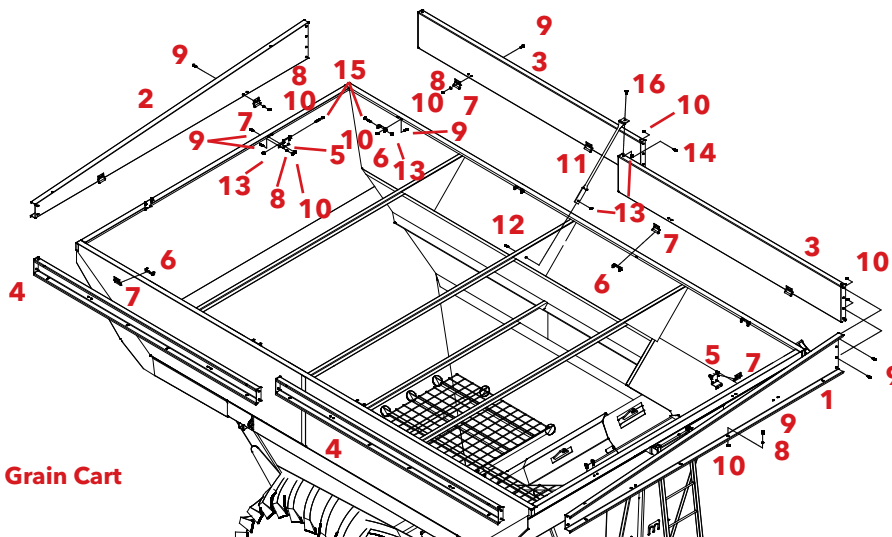
- Never fold or extend auger unless PTO is completely stopped.
- Never engage auger when system is moving at a high rate of speed.
- Never do maintenance work or service cart while the tractor is running.

850 & 1050 EXTENSION ASSEMBLY

1050 Grain Cart



850 Grain Cart



1050 Extension Parts List

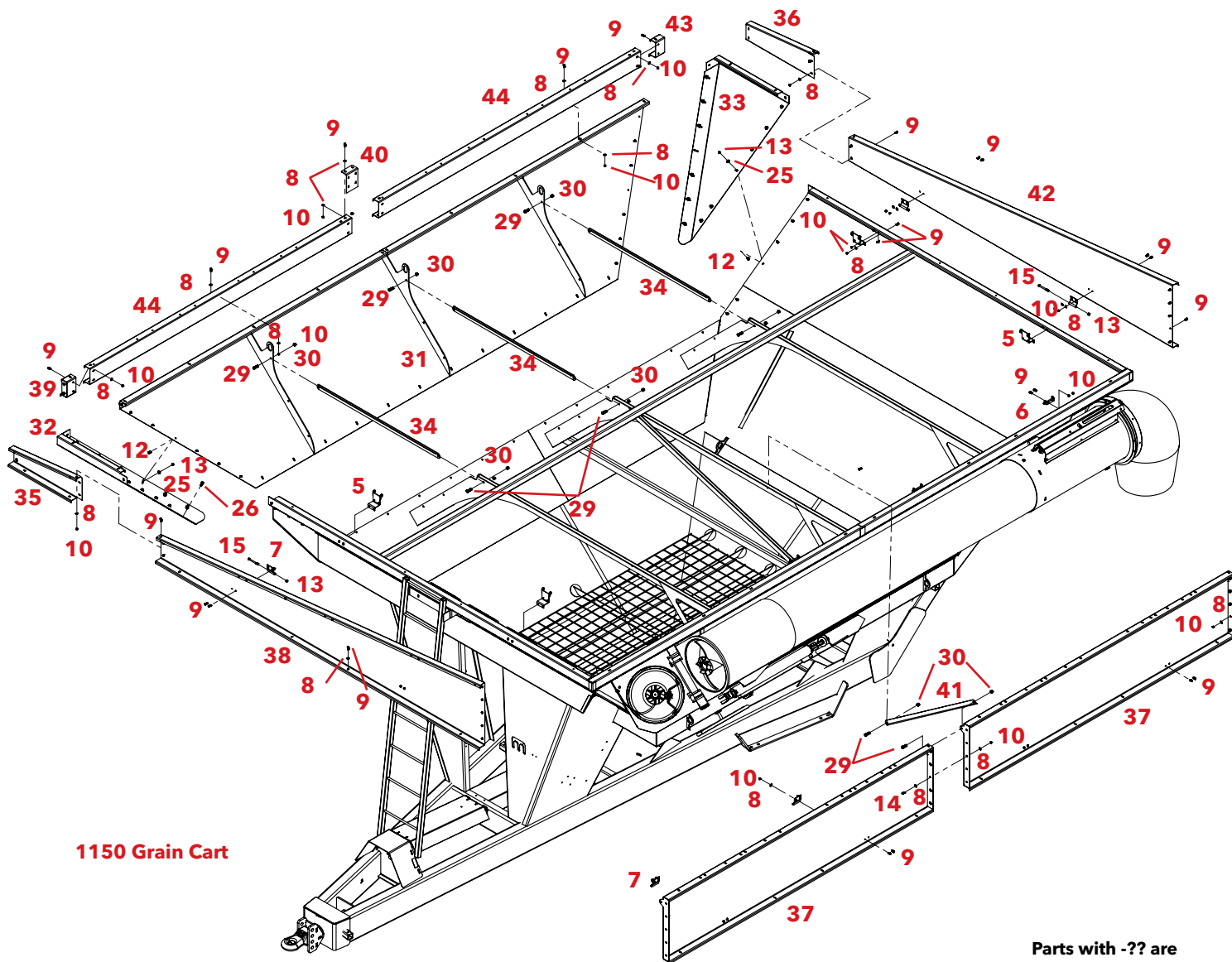
REF. NO.	PART NO.	QTY.	DESCRIPTION
5.	13152-30	4	Front/Rear Hinge
6.	13153-30	8	Side Hinge
7.	13154-30	12	Extension Hinge Pivot Bushing
8.	00004	56	5/16" Flatwasher
9.	01263	108	5/16" UNC x 3/4" Hex Head Bolt (Gr. 5)
10.	02802	115	5/16" Nylon Insert Locknut
12.	00907	3	3/8" UNC x 1" Hex Head bolt (Gr. 5)
13.	02592	18	3/8" Nylon Insert Locknut
14.	02990	7	5/16" UNC x 1" Hex Head Bolt (Gr. 5)
15.	02769	12	3/8" x 4" Hex Head Bolt (Gr. 5)
16.	03170	3	3/8" x 1-1/4" Truss Bolt
17.	12670-30	1	Front Extension
18.	12671-30	1	Rear Extension
19.	12668-30	2	Left Extension
20.	12669-30	2	Right Extension
21.	12890-30	1	Extension Spacer Plate
22.	12699-30	1	Front End Cap
23.	12700-30	1	Rear End Cap
24.	12830-30	3	Brace Pipe

850 Extension Parts List

REF. NO.	PART NO.	QTY.	DESCRIPTION
1.	10625-30	1	Front Extension
2.	10630-30	1	Rear Extension
3.	10626-30	2	Left Extension
4.	10627-30	2	Right Extension
5.	13152-30	4	Front/Rear Hinge
6.	13153-30	8	Side Hinge
7.	13154-30	12	Extension Hinge Pivot Bushing
8.	00004	56	5/16" Flatwasher
9.	01263	88	5/16" x 3/4" Hex Hd. Bolt Gr. 5
10.	02802	94	5/16" Locknut
11.	10668-30	1	Cross Angle Brace
12.	00907	1	3/8" X 1" Hex Head Bolt (Gr. 5)
13.	02592	14	3/8" Nylon Insert Locknut
14.	02990	6	5/16" x 1" Hex Head Bolt (Gr. 5)
15.	02769	12	3/8" x 4" Hex Head Bolt (Gr. 5)
16.	13052	1	3/8" x 1-1/4" Truss Bolt

Please order replacement parts by PART NO. and DESCRIPTION.

DEMCO



1150 Grain Cart

Parts with -?? are available in 4 colors

?-05 = Yellow
 ?-10 = Red
 ?-20 = Green
 ?-42 = Blue

1150 Extension Parts List

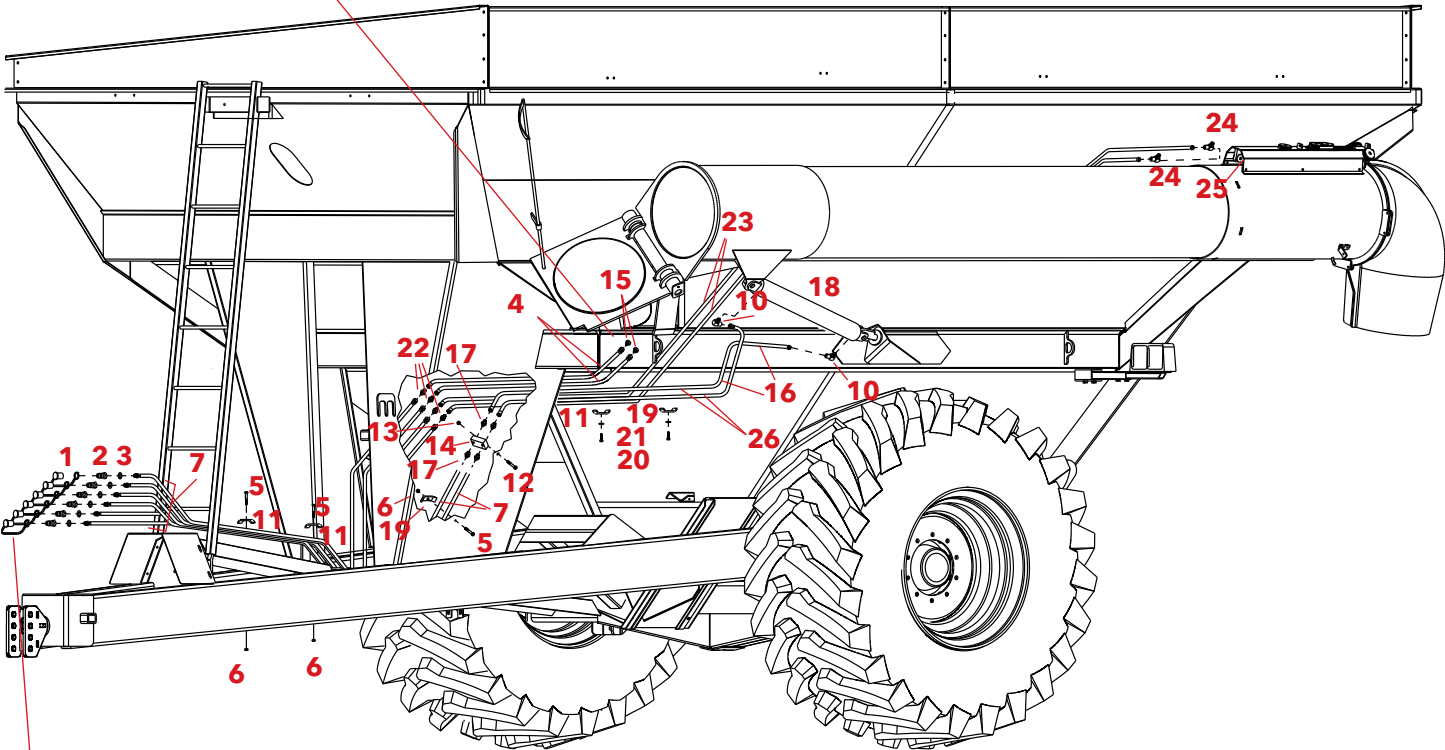
REF. NO.	PART NO.	QTY.	DESCRIPTION
5.	13152-30	4	Front/Rear Hinge
6.	13153-30	4	Side Hinge
7.	13154-30	8	Extension Hinge Pivot Bushing
8.	00004	130	5/16" Flatwasher
9.	01263	102	5/16" UNC x 3/4" Hex Head Bolt (Gr. 5)
10.	02802	107	5/16" Nylon Insert Locknut
12.	00907	39	3/8" UNC x 1" Hex Head bolt (Gr. 5)
13.	02592	39	3/8" Nylon Insert Locknut
14.	02990	5	5/16" UNC x 1" Hex Head Bolt (Gr. 5)
15.	02769	8	3/8" x 4" Hex Head Bolt (Gr. 5)
25.	00059	35	3/8" Flatwasher
26.	07594	1	3/8" x 1" Self Tap Hex Head Bolt (Gr. 5)
27.	00083	3	1/2" Nut
28.	00085	3	1/2" Flatwasher
29.	01254	6	1/2" x 1-1/2" Hex Head Bolt (Gr. 5)

1150 Extension Parts List

REF. NO.	PART NO.	QTY.	DESCRIPTION
30.	02178	6	1/2" Nylon Insert Locknut
31.	15289-??	1	Sheet Assembly Right Hand Side
32.	14392-??	1	Front Corner Sheet
33.	14393-??	1	Rear Corner Sheet
34.	15290-30	3	Linkage Arm
35.	14395-30	1	Front Extension, Short
36.	14396-30	1	Rear Extension, Short
37.	14398-30	2	Left Extension
38.	14400-30	1	Front Extension
39.	14401-30	1	Front Right Extension, Short
40.	14408-30	1	Extension Union Right Hand Side
41.	14409-30	1	Extension Support Bar
42.	14415-30	1	Rear Extension
43.	14418-30	1	Rear Right Extension, Short
44.	14497-30	2	Right Extension

HYDRAULIC PARTS & BREAKDOWN

Item #8 & #9 are on opposite side of fittings inside box



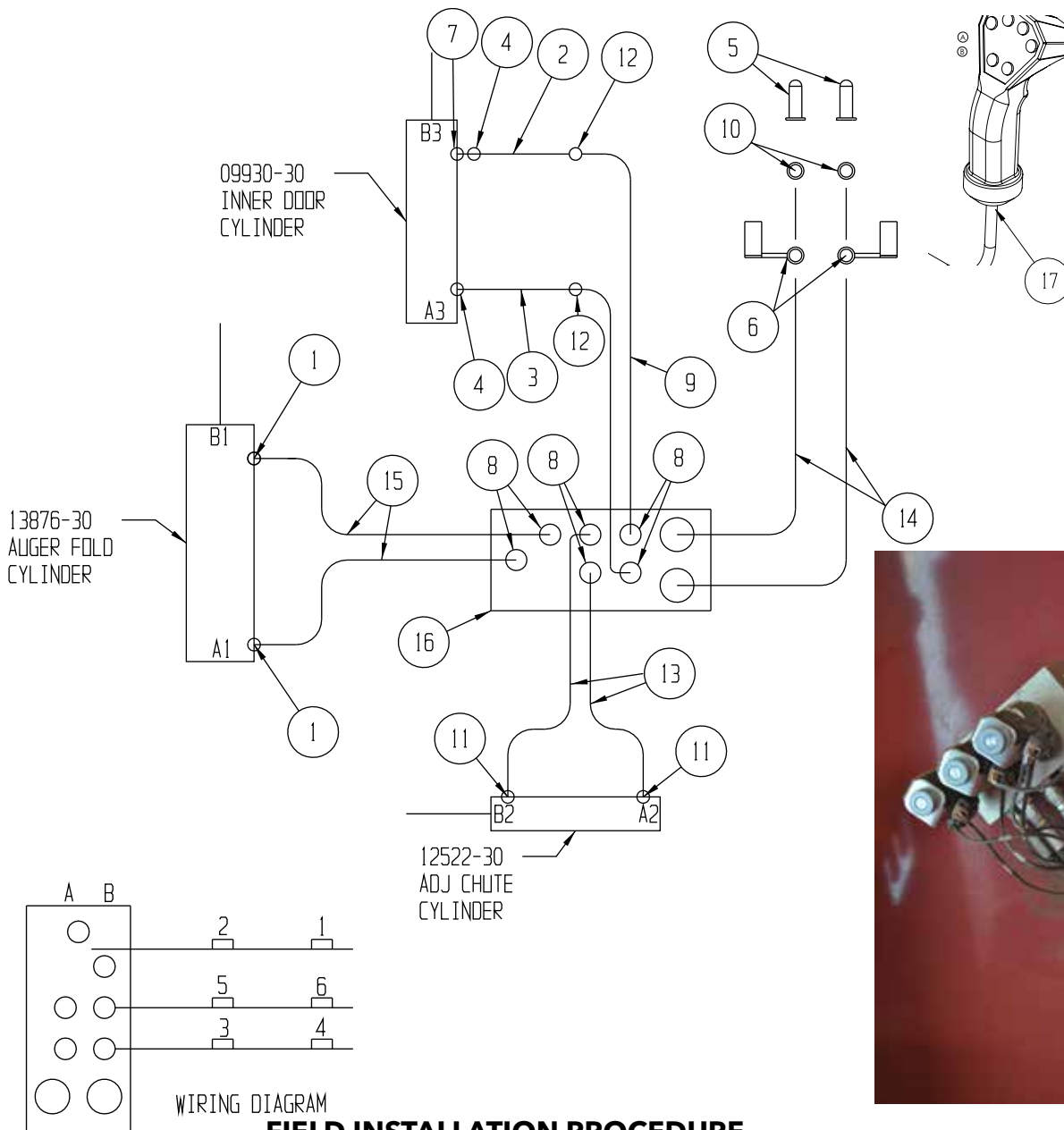
See Page 25 for optional
Pendant Grip Hydraulic Schematic

- Note:** Rubber Coupler Covers (#1) are color coded to hydraulic functions.
Black: Adjustable Chute
Red: Auger Fold/Unfold
Yellow: Inner Door

REF. NO.	PART NO.	QTY.	DESCRIPTION
1.	05198	2	Rubber Coupler Cover (Black)
-	12677	2	Rubber Coupler Cover (Red)
-	12678	2	Rubber Coupler Cover (Yellow)
2.	13888	-	Replacement Quick Coupler #8 O-Ring
3.	13889	-	Replacement #8 O-Ring
4.	05840	2	1/4" x 84" Hydraulic Hose
5.	00914	3	3/8"-16 UNC x 1-1/2" Hex Head Bolt (Gr.5)
6.	02592	3	3/8"-16 UNC Nylon Insert Locknut
7.	13883	6	1/4" x 18' Hydraulic Hose w/ Quick Coupler
8.	05191	1	1/4" x 36" Hydraulic Hose (Not Shown, see pg 18)
9.	05190	1	1/4" x 48" Hydraulic Hose (Not Shown, see pg 18)
10.	13882	2	Elb 90° 3/8 MPT & #6MJIC w/ .041 Orifice

Please order replacement parts by PART NO. and DESCRIPTION.

REF. NO.	PART NO.	QTY.	DESCRIPTION
11.	09217-30	3	Hose Keeper (4 Hose)
12.	03547	1	5/16"-18 UNC X 2-1/4" Hex Head Bolt (Gr.5)
13.	07732	1	5/16"-18 UNC Nylon Insert Locknut
14.	07582	1	Pilot Operated Check Valve
15.	12374	2	3/8" JIC Bulkhead Elbow Fitting (45°)
16.	05195	2	Str. Hyd. Fitting, .375 MPT
17.	05243	4	Str. Hyd. Fitting W/O-Ring
18.	13876-30	1	2-3/4" Bore x 30" Stroke Hydraulic Cylinder
-	6046	-	Hydraulic Cylinder Repair Kit (not shown)
19.	09218-95	3	Hose Keeper (2 Hose)
20.	00523	2	3/8" x 1-1/4" Hex Head Bolt Gr. 5
21.	00060	2	3/8" Lockwasher
22.	09950	4	Union, .563 M 2x
23.	13884	2	1/4" x 21.5' Hydraulic Hose
24.	13886	2	90° Elbow, 6 O-Ring x Male 6 JIC w/ .041 Orifice
25.	12522-30	1	1-1/2" Bore x 8" Stroke Hydraulic Cylinder
26.	13069	2	1/4" x 106" Hydraulic Hose



FIELD INSTALLATION PROCEDURE

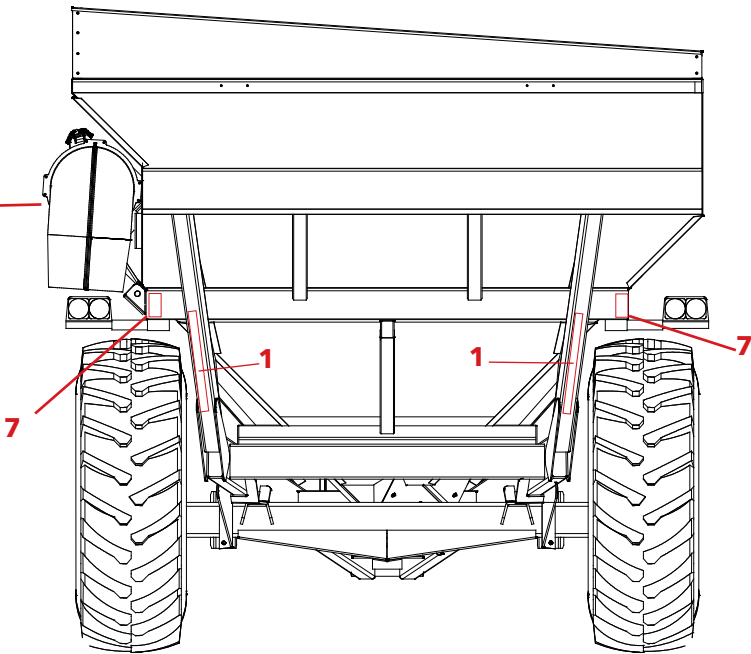
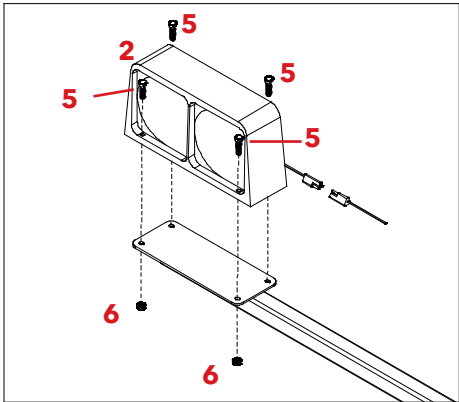
1. Thoroughly wash all hydraulic hoses & fittings prior to disassembly.
2. Remove pilot operated check valve (#14) see page 24.
3. Install hydraulic block (#16) where pilot operated check valve was installed.
4. Install hydraulic hoses to hydraulic block per pendant control hydraulic schematic.
5. Install wire harness from hydraulic block to grain cart hitch. **NOTE:** Route wire harness to prevent PTO shaft interference.
6. Install pendant controller (#17) in tractor cab.

REF. NO.	PART NO.	QTY.	DESCRIPTION
1.	13882	2	Elb 90Deg 3/8 MPT & #6MJIC w/ .041 Orifice
2.	05190	1	1/4" x 48" Hydraulic Hose
3.	05191	1	1/4" x 36" Hydraulic Hose
4.	05195	2	Str. Hyd. Fitting, .375 MPT
5.	13888	2	Hydraulic Quick Coupler
6.	05198	2	Rubber Coupler Cover (Black)
7.	05215	1	3/8" MPT x 3/8" FPT Elbow Fitting
8.	05243	6	Str. Hyd. Fitting w/ O-Ring
9.	05840	2	1/4" x 84" Hydraulic Hose

REF. NO.	PART NO.	QTY.	DESCRIPTION
10.	13891	2	Replacement #10 O-Ring
11.	13886	2	90° Elbow, 6 O-Ring x Male 6 JIC w/ .041 Orifice
12.	12374	2	Bulkhead Hydraulic Fitting, 45°
13.	13884	2	1/4" x 258" Hydraulic Hose
14.	13885	2	1/2" x 22' Hydraulic Hose
15.	13069	2	1/4" x 106" Hydraulic Hose
16.	13064	1	Hydraulic Block
-	14084	-	Cartridge GS04
-	17004	-	Harness f/ Hydraulic Block
-	15636	-	Coil
17.	17005	1	Pendant Controller
-	17060	-	12' Ext. Pendant Controller Cable (Optional)
-	14441	-	Switch

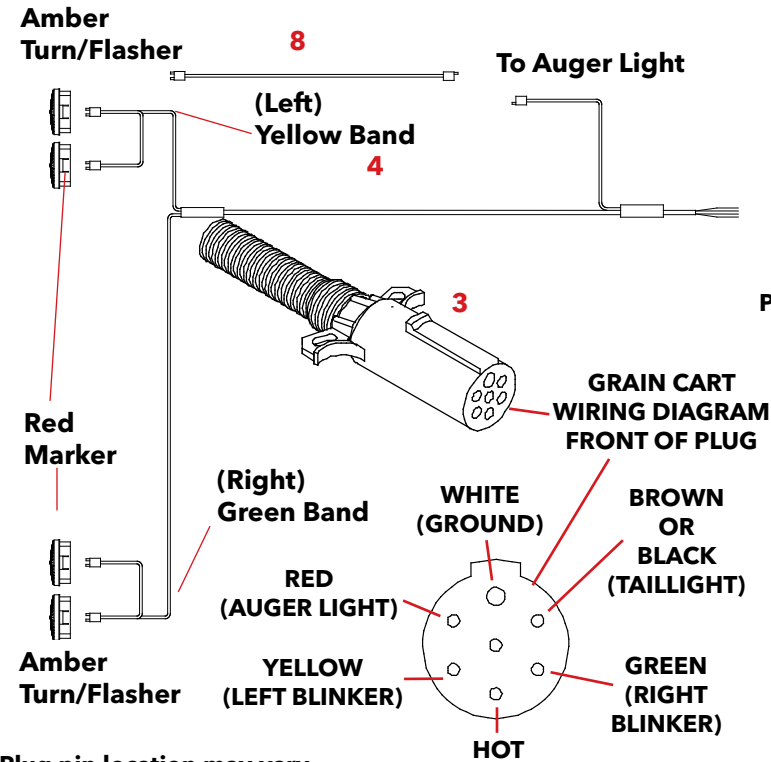
Please order replacement parts by PART NO. and DESCRIPTION.

FOR AUGER LIGHT PART
NUMBERS, SEE PAGE 18



REF. NO.	PART NO.	QTY.	DESCRIPTION
1.	07278	2	Conspicuity Tape
2.	15271	1	Left Dual Ag Light
---	15272	1	Right Dual Ag Light
3.	07416	1	7-Way Male Plug Connector
4.	16819	1	Wiring Harness
5.	00336	8	1/4" 1-1/4" Hex Head Bolt
6.	00062	8	1/4" Nylon Insert Locknut
7.	04508	4	Amber Reflective Sticker
---	04804	4	Red Reflective Sticker
8.	14981	1	Chute Light Wire Harness

Please order replacement part by PART NO. and DESCRIPTION.



Plug pin location may vary depending on tractor.

NOTE: Connect the wires to the tractor plug in, make sure all lights are in correct working order. When working correctly behind a tractor, the amber lights are the flashing warning lights and the turn signals.

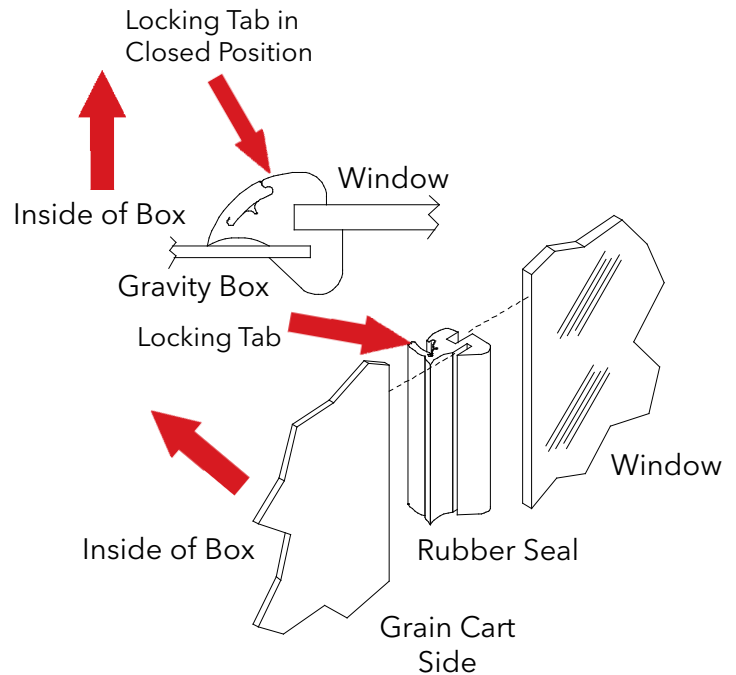
INSTALLING THE LIGHT KIT

1. Start wiring the lights as shown in the drawing and the wiring schematic. Secure the Light Harness (#6) to the frame using nylon hose ties. Next Attach the lights to the fenders. With the amber light to the outside of the grain cart and the side with the amber and red light facing the rear of the grain cart, use eight 1/4" x 1-1/4" hex bolts (#11) and eight 1/4" nylon insert locknuts (#12) to attach the lights.
2. When connecting the wire harness (#6) to the front (male tractor) plug (#5) follow the wire schematic as follows: Brown wire to the Red braking marker lights, Yellow wire to the left turning marker light, Green wire to the right turning marker light, and White wire to the ground. Proceed wiring the lights as shown in the drawing and the wiring schematic.

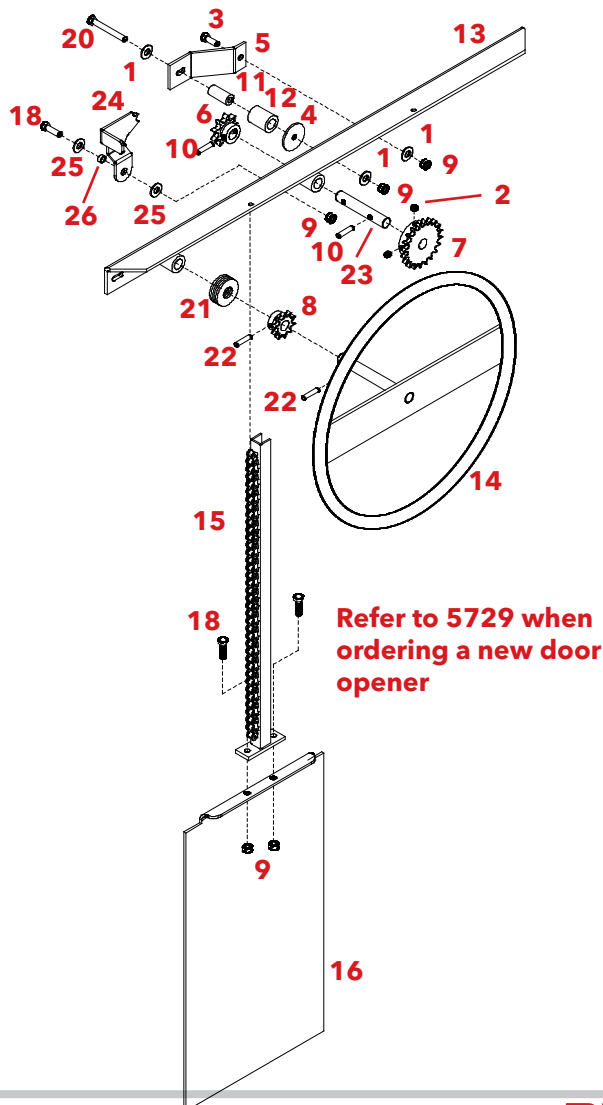
INSTALLATION PROCEDURE

The installation must be done from inside the box.

1. Place rubber molding in opening. Seam should begin on side of opening.
2. Remove the protective sheeting from both sides of the plastic window.
3. Slide window into groove in molding. Use a flat blade screwdriver to get molding seated correctly. Using soapy water will aid in installation
4. Using the flat blade screwdriver, press in the locking tab.

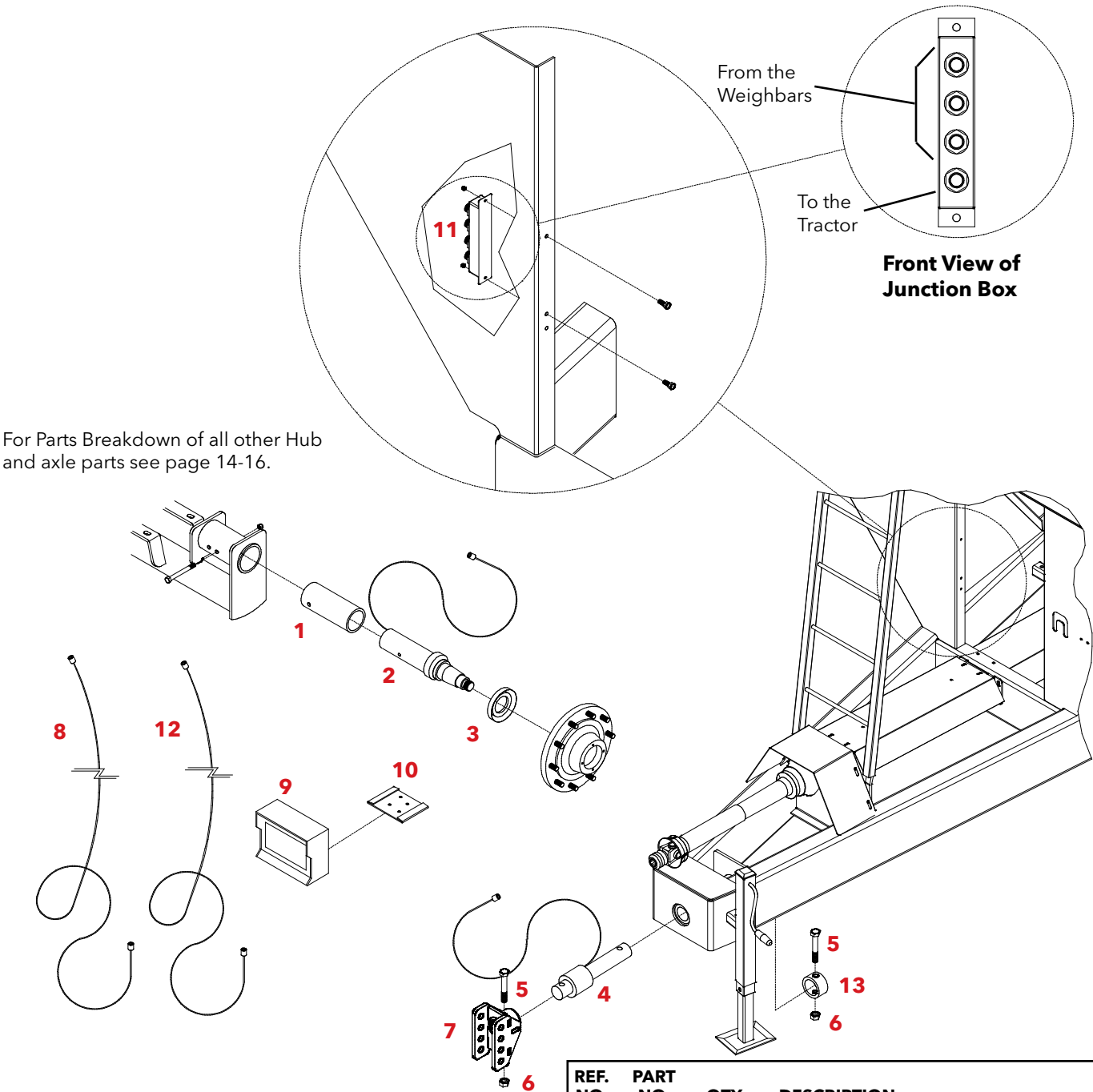


OUTER DOOR LIFT ASSEMBLY

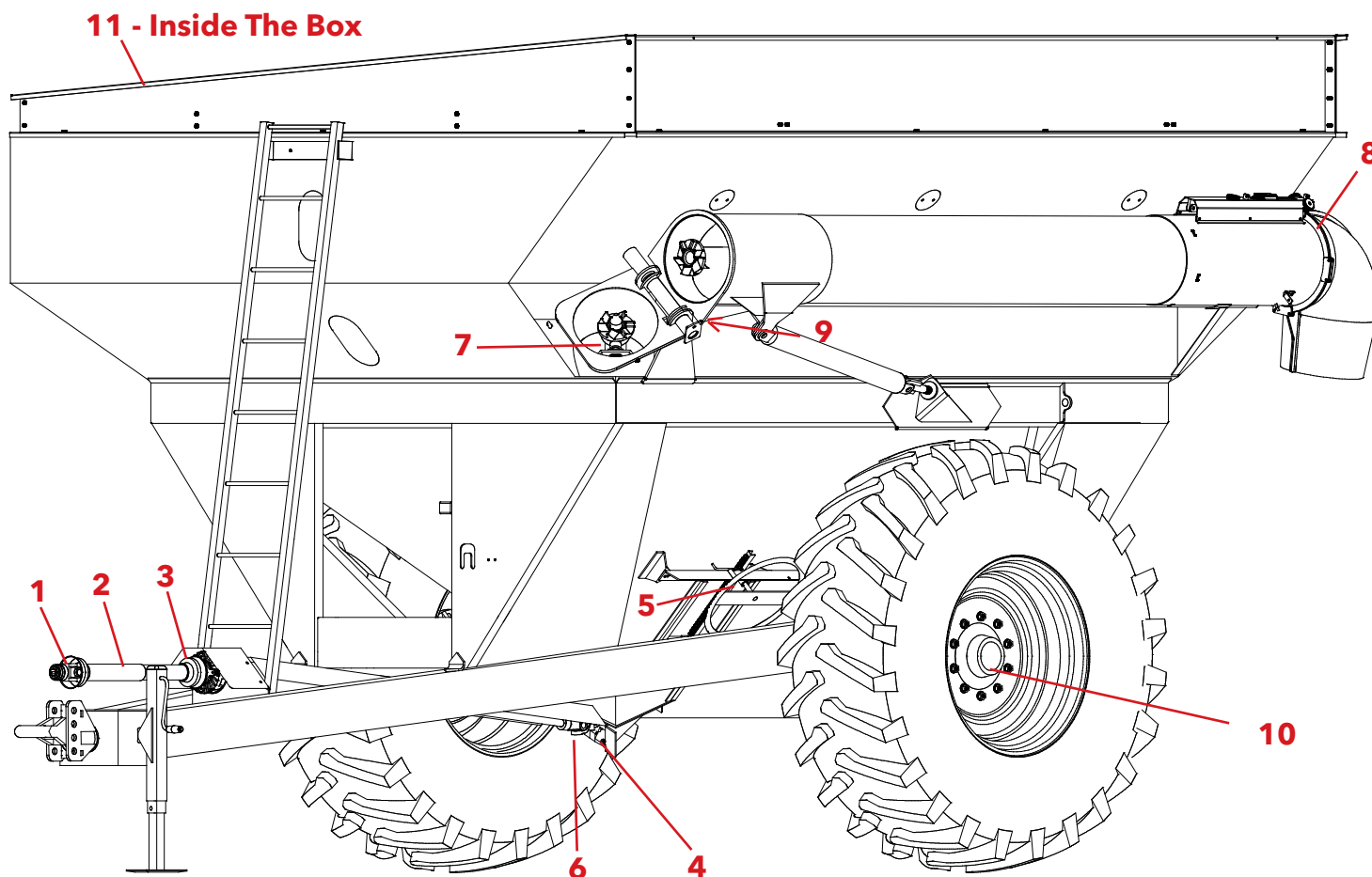


INSTALLATION PROCEDURE

1. Start by attaching the lower door (#16) to the lift channel (#15) using two 3/8" x 1-1/4" bolts (#18) and two 3/8" nylon insert locknuts (#9). Leave bolts loose at this time.
2. Next assemble the door lift mount (#13) as shown. Leave the bolts loose at this time. After this is assembled, slide the lower door and lift channel into place on the grain cart. Slide the assembled lift mount over the lift channel and bolt into place using two 3/8" x 1-1/4" bolts (#18), two 3/8" flatwashers (#1), and two 3/8" locknuts (#9). Now tighten all the bolts.



REF. NO.	PART NO.	QTY.	DESCRIPTION
1.	09410	2	Spindle Insert (850/1050)
2.	12260	2	Spindle with 21' Wire Harness (850/1050)
-	14501	2	Spindle with 21' Wire Harness (1150)
3.	09442	2	Grease Seal (850/1050)
-	14494	2	Grease Seal (1150)
4.	12263	1	Hitch Scale with 12' Wire Harness
5.	11698	2	7/8" x 5 1/2" Hex Head Bolt Gr. 8
6.	10678	2	7/8" Nylon Insert Locknut
7.	12346-30	1	Hitch Assembly
8.	09441	1	8' Power Cord Harness
9.	12259	1	640M Scale Monitor w/ printer port
10.	09440	1	640M Scale Bracket
11.	12257	1	Junction Box for 640M Scale unit
12.	12264	1	25' Junction Box to Console Harness (640M)
13.	12375-30	1	Hitch Stop Collar (Black)
14.	13266	1	15' Extension Cable (not shown)



Reference numbers **#1 -#3 -#6** Are U-Joints -- Check and grease regularly.

Reference number **#2** - Is a Telescoping P.T.O. Shaft with two slots in housing -- Fully extend P.T.O. Shaft, then place one or two pumps of grease in each slot.

Reference number **#4** - Auger gear box is filled with 80-90 gear lube -- To check gear box find inspection allen plug on the Non-Auger side. Turn out plug. Gear lube should just start to run out. If low fill until gear lube just starts to run out. Should be about 24-26 oz. of 80-90 gear lube. **DO NOT OVER FILL!!!** When gear box is full be sure to replace inspection plug.

Reference number **#5** - Is a bushing for the turn handle of the door lift assembly -- Inspect and grease as needed.

Reference numbers **#7 - #8** - Are fixed sealed bearings -- Do not over grease sealed bearings.

Reference number **#9** - Is the hinge for the outer tube. There is one zerk in this area -- Inspect and grease as needed.

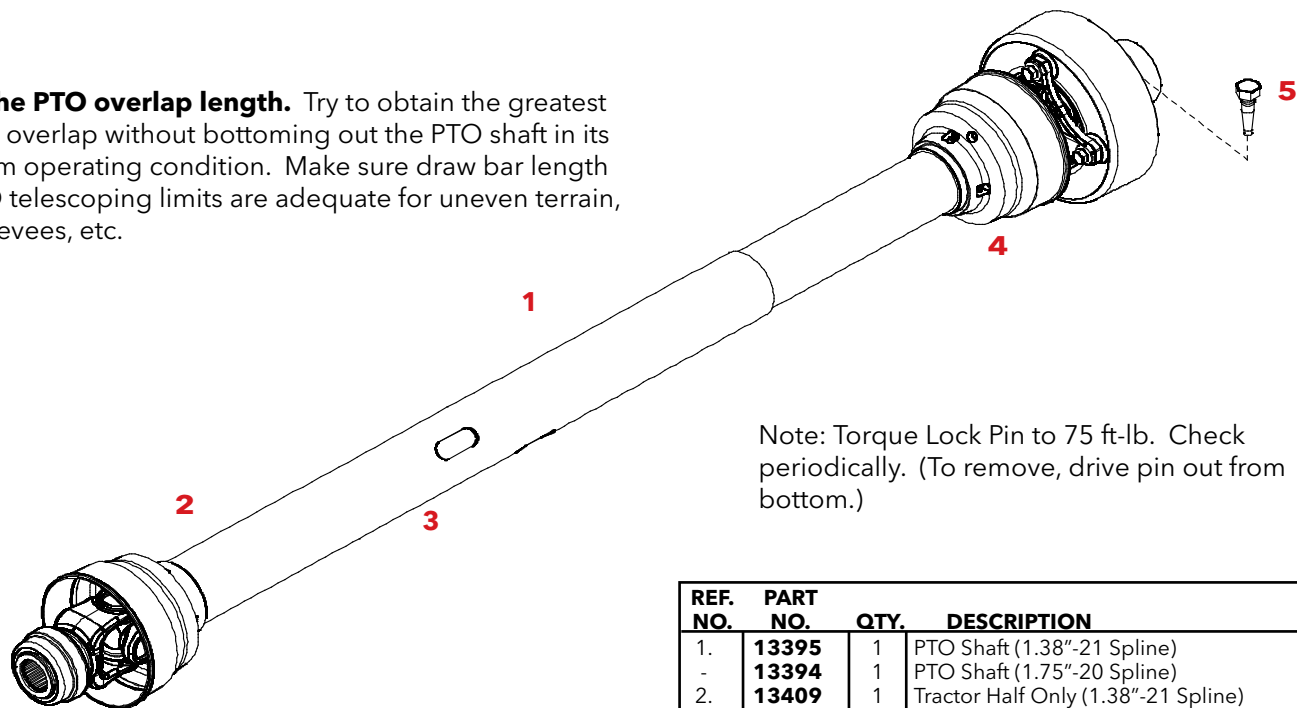
Reference number **#10** - Is the axle hub with inner and outer bearings and races -- Inspect regularly, pack bearing and replace inner wheel seal as needed.

Reference number **#11** - Is four bushings on the inner door. There are four grease zerks on this door--Inspect and grease every 20 hours. **Also Lube the guide rods with a good lubricant at this time.**

NOTE. Grease all zerks before each use or when needed with a good quality lubricant. **Do Not** over grease sealed bearings. Over greasing sealed bearing will damage seals. Once a season is generally sufficient.

PTO DRIVE SHAFT PARTS BREAKDOWN

Check the PTO overlap length. Try to obtain the greatest possible overlap without bottoming out the PTO shaft in its maximum operating condition. Make sure draw bar length and PTO telescoping limits are adequate for uneven terrain, gullies, levees, etc.



Note: Torque Lock Pin to 75 ft-lb. Check periodically. (To remove, drive pin out from bottom.)

REF. NO.	PART NO.	QTY.	DESCRIPTION
1.	13395	1	PTO Shaft (1.38"-21 Spline)
-	13394	1	PTO Shaft (1.75"-20 Spline)
2.	13409	1	Tractor Half Only (1.38"-21 Spline)
-	13408	1	Tractor Half Only (1.75"-20 Spline)
3.	13549	1	Outer Guard Kit, Replacement
4.	13550	1	Inner Guard Kit, Replacement
5.	13522	1	Tapered Lock Pin

Please order replacement parts by **PART NO.** and **DESCRIPTION.**

1. Maximum Operating Length L_B

Maximum operating length should not be more than half of telescoping member length (**P_U**).

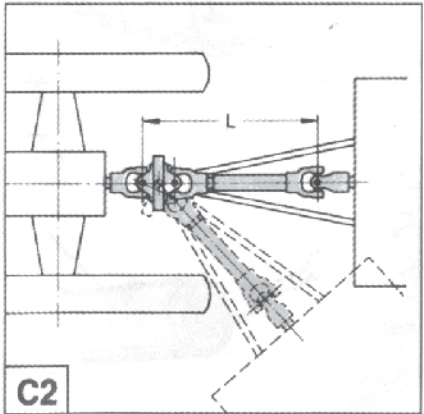
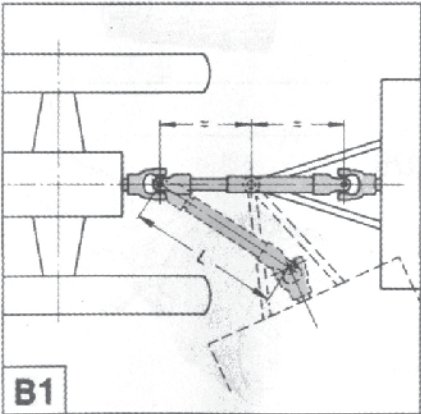
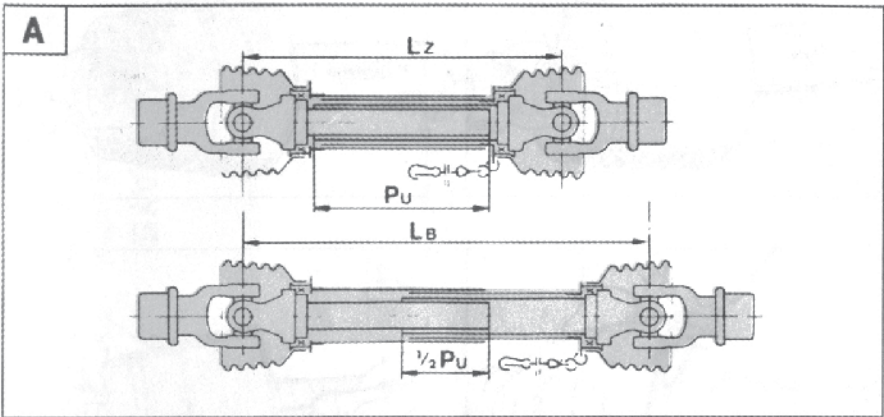
2. Maximum Joint Angles (B1 & C2)

Do not exceed normal operation joint angle of 25°
Ensure equal joint angles and switch off PTO if joint angles are too large and/or unequal.

3. Lubrication

Lubricate before starting work and every 8 hours of operation.

4. Please refer to the PTO Manufacture's Manual, which is located in the manual holder for further details regarding usage, service and lubrication grease locations.



Downtime in the fields caused by field breakdowns is costly and time consuming. Many breakdowns can be eliminated by periodic equipment maintenance. By spending a little time running over this checklist, following proper after-season care, you can save time and money later on.



WARNING: To Prevent Serious Injury Or Death

- Make sure ALL guards and shields are in place.
- Keep hands, feet, and loose clothing away from rotating parts.

Before Going To The Field :

1. HYDRAULIC HOSES

- Check all hoses for worn or soft spots.
- Check to make sure hoses are not kinked or pinched.
- Check for leakage in any of the lines and cylinders.

2. REPLACEMENT PARTS

- Replace all worn or damaged parts.

3. VISUALLY INSPECT

- Inspect tires for cracks and worn spots.
- Inspect inside of Grain Cart, make sure that all guards are in place and in good shape. Be sure auger is free from any obstructions.
- Inspect for any loose bolts, worn parts, or cracked welds, and make any necessary repairs.

4. CHECK

- Tires for proper inflation.
- Lug nuts for proper torque.
- Lights for proper operation.
- Oil level in gearbox.
- Zerk locations, and grease as needed.
- All guards and shields. Replace or repair if necessary to insure proper protection.

After Season Care:

Open inner slide gate and grease the slide rods. Open outer door to allow box to drain.

Keep auger folded back during storage.

Grease all zerk locations (see page 29 for maintenance locations).

Repack wheel bearings before storage.

Inspect tires for puncture holes or any other type of leak and repair as needed.

Tire Inflation Chart

TIRE SIZE	LOAD INDEX/PLY	MAXIMUM TIRE PSI.
SINGLES		
24.5-32	12	31 PSI
800/65R32	172	41 PSI
30.5L-32	12	26 PSI
900/60R32	176A8/B	44 PSI
900/60R32	185	70 PSI
1050/50R32	178	44 PSI
DUALS		
18.4-38	8	26 psi
520/85R38	155	30 psi

Tires PSI above is figured as cyclic loading @ 6mph.



4010 320th St., Boyden, IA. 51234

Phone: (712) 725-2311

Fax: (712) 725-2380

Toll Free: 1-800-54DEMCO (1-800-543-3626)

**Demco warranty policies, operator manuals, and product registration
can be found online:**

www.demco-products.com

