



Doing Our Best to Provide You the Best

AC20115, Rev 5
03/20

FIELD SPRAYERS

SIDEQUEST® 1200 Gallon



OPERATOR MANUAL

INTRODUCTION

Thank you for purchasing Demco’s SIDEQUEST®. We feel you have made a wise choice and hope you are completely satisfied with your SIDEQUEST®. If you have any questions regarding the applications of certain solutions or chemicals, contact your chemical supplier and follow chemical manufacturer recommendations as well as all licensing and use restrictions or regulations.

WARRANTY POLICY, OPERATOR MANUALS, PARTS MANUALS & REGISTRATION

Go online to www.demco-products.com to review Demco warranty policies, operator manuals and register your Demco product.



WARNING: TO AVOID PERSONAL INJURY OR PROPERTY DAMAGE, OBSERVE FOLLOWING INSTRUCTIONS:

- Chemicals are dangerous. Know exactly what you’re going to do and what is going to happen before attempting to work with these products. Improper selection or use can injure people, animals, plants and soil.**
- Always wear protective clothing such as coveralls, goggles and gloves when working with chemicals or sprayer.**
- Be sure to dispose of all unused chemicals or solutions in a proper and ecologically sound manner.**

GENERAL INFORMATION

- 1. Unless otherwise specified, high-strength (grade5)(3 radial-line head markings) hex head bolts are used throughout assembly of this sprayer.
- 2. Whenever terms “LEFT” and “RIGHT” are used in this manual it means from a position behind sprayer and facing forward.
- 3. When placing a parts order, refer to this manual for proper part numbers and place order by PART NO. and DESCRIPTION.

TABLE OF CONTENTS

General Information & Table of Contents2

Safety, Signal Words3

Equipment Safety Guidelines, Lighting and Marking4

Safety Sign Care4

Safety Sign Locations5

Tire Safety, Remember6

Before Operation6

During Operation.....7

Following Operation7

Highway and Transport Operations8

Performing Maintenance 8-9

Bolt Torque.....10

Checking Alignment/Run Out Procedures.....11

Assembly Instructions 12-13

Plumbing Breakdown14

Hub & Spindle Breakdown15

600 Gallon Parts Breakdown 16-17

Sprayer Checklist18

TAKE NOTE! THIS SAFETY ALERT SYMBOL FOUND THROUGHOUT THIS MANUAL IS USED TO CALL YOUR ATTENTION TO INSTRUCTIONS INVOLVING YOUR PERSONAL SAFETY AND SAFETY OF OTHERS. FAILURE TO FOLLOW THESE INSTRUCTIONS CAN RESULT IN INJURY OR DEATH!



THIS SYMBOL MEANS
ATTENTION
BECOME ALERT
YOUR SAFETY IS INVOLVED!

SIGNAL WORDS:

This manual uses the following signal words--DANGER, WARNING, and CAUTION-- with safety messages. The appropriate signal word has been selected using the following guidelines.

WARNING:

Indicates a potentially hazardous situation that, if not avoided, could result in death or serious injury, and includes hazards that are exposed when guards are removed. It may also be used to alert against unsafe practices.

DANGER:

Indicates an imminently hazardous situation that, if not avoided, will result in death or serious injury. This signal word is to be limited to most extreme situations typically for machine components which, for functional purposes, cannot be guarded.

CAUTION:

Indicates a potentially hazardous situation that, if not avoided, may result in minor or moderate injury. It may also be used to alert against unsafe practices.

If you have questions not answered in this manual, require additional copies, or if your manual is damaged, please contact your dealer or Demco,
4010 320th Street, Boyden, IA 51234
ph: (712) 725-2311 or Toll Free: 1-800-543-3626 Fax: (712) 725-2380
<http://www.demco-products.com>



SAFETY...YOU CAN LIVE WITH IT



EQUIPMENT SAFETY GUIDELINES

Every year many accidents occur which could have been avoided by a few seconds of thought and a more careful approach to handling equipment. You, the operator, can avoid many accidents by observing the following precautions in this section. To avoid personal injury, study the following precautions and insist those working with you, or you yourself, follow them.

In order to provide a better view, certain illustrations in your owners manual may show an assembly with a safety shield removed. However, sprayer should never be operated in this condition. Keep all shields in place. If shield removal becomes necessary for repairs, replace shield prior to use.

Replace any caution, warning, danger or instruction safety decal that is not readable or is missing. Location of such decals is indicated in this booklet.

Do not attempt to operate this sprayer under the influence of alcohol or drugs.

Review safety instructions with all users annually.

Operator should be a responsible adult. DO NOT ALLOW PERSONS TO OPERATE OR ASSEMBLE THIS SPRAYER UNTIL THEY HAVE DEVELOPED A THOROUGH UNDERSTANDING OF SAFETY PRECAUTIONS AND HOW IT WORKS.

To prevent injury or death, use a tractor equipped with a roll over protective system (ROPS). Do not paint over, remove, or deface any safety signs or warning decals on your sprayer. Observe all safety signs and practice instructions on them.

Never exceed limits of sprayer. If its ability to do a job, or to do so safely is in question DON'T TRY IT.



LIGHTING AND MARKING

It is the responsibility of customer to know lighting and marking requirements of local highway authorities and to install and maintain equipment to provide compliance with regulations. Add extra lights when transporting at night or during periods of limited visibility.

Lighting kits are available from your dealer or from manufacturer.



SAFETY SIGN CARE

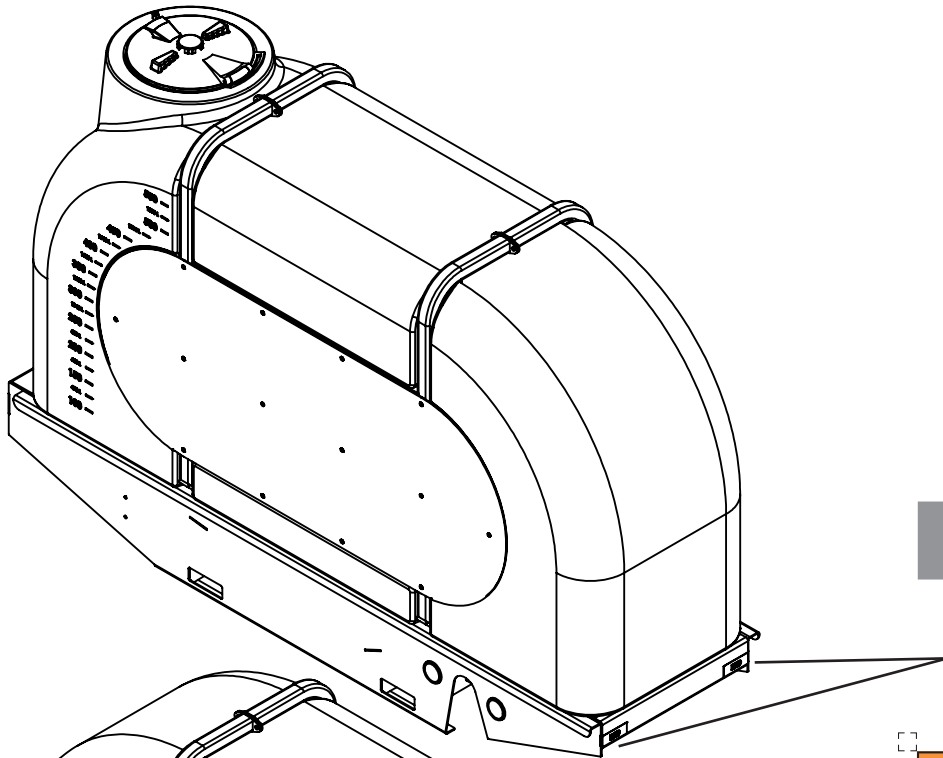
- Keep safety signs clean and legible at all times.
- Replace safety signs that are missing or have become illegible.
- Replacement parts that displayed a safety sign should also display current sign.
- Safety signs are available from your distributor, dealer parts department, or factory.

How to install safety signs:

- Be sure that installation area is clean and dry.
- Decide on exact position before you remove backing paper.
- Remove smallest portion of split backing paper.
- Align decal over specified area and carefully press small portion with exposed sticky backing in place.
- Slowly peel back remaining paper and carefully smooth remaining portion of decal into place.
- Small air pockets can be pierced with a pin and smoothed out using piece of decal backing paper.



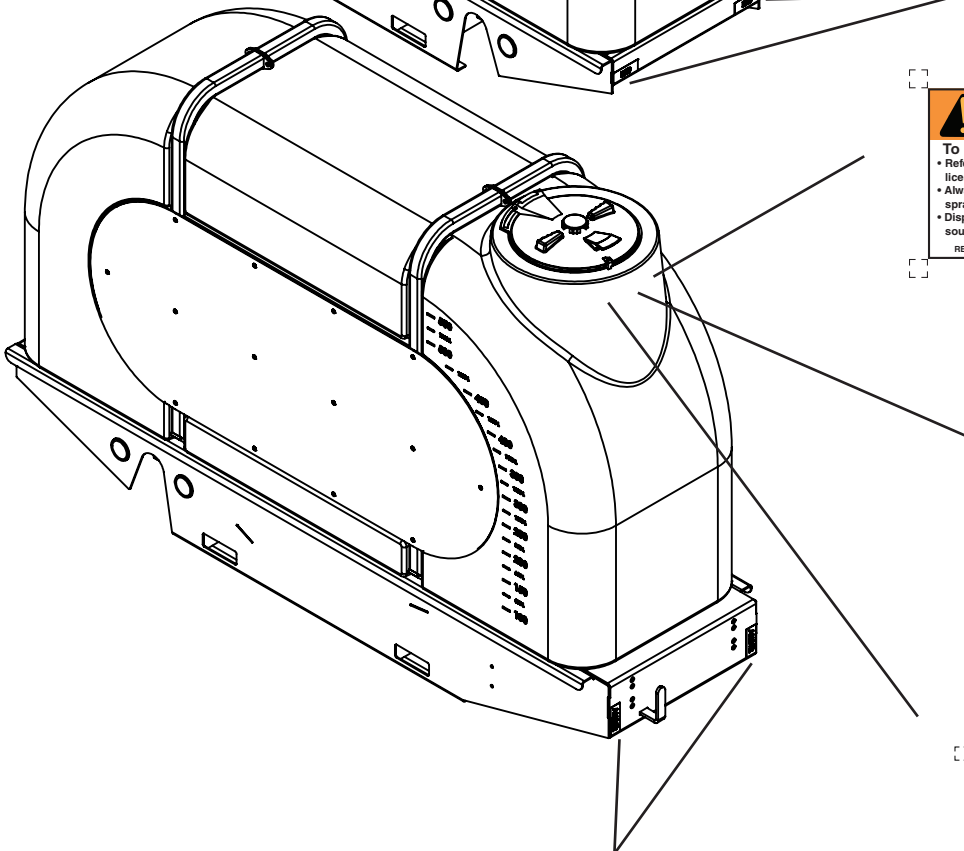
SAFETY SIGN LOCATIONS



Part# 10328 Red
(on back side of tank)



AB21014



Part# 10327 Amber



AB21001



AB21002



TIRE SAFETY

- Failure to follow proper procedures when mounting a tire on a rim can produce an explosion which may result in a serious injury or death.
- Do not attempt to mount a tire unless you have proper equipment and experience to do job.
- Inflating or servicing tires can be dangerous. Whenever possible, trained personnel should be called to service and/or mount tires.
- Always order and install tires and wheels with appropriate type and load capacity to meet or exceed anticipated weight to be placed on sprayer.



REMEMBER

Your best assurance against accidents is a careful and responsible operator. If there is any portion of this manual or function you do not understand, contact your local authorized dealer or manufacturer.



BEFORE OPERATION

- Carefully study and understand this manual.
- Do not wear loose-fitting clothing which may catch in moving parts.
- Always wear protective clothing and substantial shoes.
- It is recommended that suitable protective hearing and eye protection be worn.
- Operator may come in contact with certain materials which may require specific safety equipment relative to handling of such materials. (Examples: extremely dusty, molds, fungus, bulk fertilizers, etc.)
- Keep wheel and lug nuts tightened to specified torque.
- Assure that agricultural implement tires are inflated evenly.
- Give sprayer a visual inspection for any loose bolts, worn parts, or cracked welds, and make necessary repairs. Follow maintenance safety instructions included in this manual.
- Be sure there are no tools lying on or in equipment
- Do not use sprayer until you are sure that area is clear, especially around children and animals.
- Don't hurry learning process or take sprayer for granted. Ease into it and become familiar with your new equipment.
- Practice operation of your sprayer and its attachments. Completely familiarize yourself and other operators with its operation before using.
- Use a tractor equipped with Roll Over Protection System (ROPS) and fasten your seat belt prior to starting the engine.
- Manufacturer does not recommend usage of a tractor with the ROPS removed.
- Move tractor wheels to widest recommended settings to increase stability.
- Do not allow anyone to stand between tongue or hitch and towing vehicle when backing up to equipment.



DURING OPERATION

- Beware of bystanders, PARTICULARLY CHILDREN! Always look around to make sure that it is safe to start engine of towing unit or move sprayer. This is particularly important with higher noise levels and quiet cabs, as you may not hear people shouting.
- NO PASSENGERS ALLOWED- Do not carry passengers anywhere on or in tractor or sprayer.
- Keep hands and clothing clear of moving parts.
- Do not clean, lubricate, or adjust your equipment while it is moving.
- When halting operation, even periodically, set tractor or towing unit brakes, disengage PTO, shut off engine, and remove ignition key.
- Be especially observant of operating area and terrain. Watch for holes, rocks, or other hidden hazards. Always inspect area prior to operation.
 - DO NOT operate near edge of drop-off or banks.
 - DO NOT operate on steep slopes as overturn may result.
 - Operate up and down (not across) intermediate slopes. Avoid sudden starts and stops.
- Pick the most level possible route when transporting across fields. Avoid edges of ditches, gullies, and steep hillsides.
- Be extra careful when working on inclines.
- Periodically clear equipment of brush, twigs, or other materials to prevent buildup of dry combustible materials.
- Maneuver tractor or towing unit at safe speeds.
- Avoid overhead wires or other obstacles. Contact with overhead lines could cause serious injury or death.
- Avoid loose gravel, rocks, and holes; they can be dangerous for equipment operation or movement.
- Allow for sprayer length when making turns.
- Do not walk or work under raised components or attachments unless securely positioned and blocked.
- Keep all bystanders, pets, and livestock clear of work area.
- Operate towing unit from operators seat only.
- Never stand alongside of unit with engine running or attempt to start engine and/or operate machine while standing alongside of unit.
- Never leave running equipment unattended.
- As a precaution, always recheck hardware on equipment following every 100 hours of operation. Correct all problems. Follow maintenance safety procedures.



FOLLOWING OPERATION

- Following operation, or when unhitching, stop tractor or towing unit, set brakes, disengage PTO and all power drives, shut off engine and remove ignition key.
- Store sprayer in an area away from human activity.
- Do not park sprayer where it will be exposed to livestock for long periods of time. Damage and livestock injury could result.
- Do not permit children to play on or around stored unit.
- Make sure all parked machines are on a hard, level surface and engage all safety devices.
- Wheel chocks may be needed to prevent unit from rolling.



HIGHWAY AND TRANSPORT OPERATIONS

- **SAFETY CHAINS:** If equipment is going to be transported on a public highway, always follow state and local regulations regarding safety chains and auxiliary lighting. Be sure to check with local law enforcement agencies for your own particular regulations. If required, safety chains should be obtained and installed. Only safety chains (not elastic or nylon/plastic tow straps) should be used to retain connection between towing and towed machines in event of separation of primary attaching system. Use a high strength, appropriately sized hitch pin with a mechanical retainer and attach safety chains. Criss cross chains under tongue and secure to draw bar cage, mounting loops, or bumper frame.
- Adopt safe driving practices:
 - Keep brake pedals latched together at all times. NEVER USE INDEPENDENT BRAKING WITH SPRAYER IN TOW, LOSS OF CONTROL AND/OR UPSET OF UNIT CAN RESULT.
 - Always drive at a safe speed relative to local conditions, ensure that your speed is low enough for an emergency stop. Keep speed to a minimum.
 - Reduce speed prior to turns to avoid risk of overturning.
 - Always keep tractor or towing unit in gear to provide engine braking when going downhill. Do not coast.
 - Do not drink and drive!
- Comply with state and local laws governing highway safety and movement of farm machinery on public roads.
- Use approved accessory lighting, flags and necessary warning devices to protect operators of other vehicles on highway during transport. Various safety lights and devices are available from your dealer.
- Use of flashing amber lights is acceptable in most localities. However, some localities prohibit their use. Local laws should be checked for all highway lighting and marking requirements.
- When driving tractor and sprayer on road under 20 m.p.h. (40 kph) at night or during day, use flashing amber warning lights and a slow moving vehicle (SMV) identification emblem.
- Plan your route to avoid heavy traffic.
- Be a safe and courteous driver. Always yield to oncoming traffic in all situations, including narrow bridges, intersections, etc.
- Be observant of bridge load ratings. Do not cross bridges rated lower than gross weight at which you are operating.
- Watch for obstructions overhead and side to side while transporting.
- Always operate equipment in a position to provide maximum visibility. Make allowances for increased length and weight of sprayer when making turns, stopping unit, etc.



PERFORMING MAINTENANCE

- Good maintenance is your responsibility. Poor maintenance is an invitation to trouble.
- Make sure there is plenty of ventilation. Never operate engine of towing vehicle in a closed building. Exhaust fumes may cause asphyxiation.
- Before working on this machine, stop towing vehicle, set brakes, disengage PTO and all power drives, shut off engine and remove ignition key.
- Be certain all moving parts and attachments have come to a complete stop before attempting to perform maintenance.
- Always use safety support and block wheels. Never use a jack to support machine.
- Always use proper tools or equipment for job at hand.
- Use extreme caution when making adjustments.
- Follow torque chart in this manual when tightening bolts and nuts.
- Never use your hands to locate a hydraulic leak on attachments. Use a small piece of cardboard or wood. Hydraulic fluid escaping under pressure can penetrate skin.
- Openings in skin and minor cuts are susceptible to infection from hydraulic fluid. Without immediate medical treatment, serious infection and reactions can occur.
- When disconnecting hydraulic lines, shut off hydraulic supply and relieve all hydraulic pressure.
- Replace all shields and guards after servicing and before moving.
- After servicing, be sure all tools, parts and service equipment are removed.
- Do not allow grease or oil to build up on any steps or platform.
- When replacing bolts, refer to owners manual.
- Refer to bolt torque chart for head identification marking.
- Where replacement parts are necessary for periodic maintenance and servicing, genuine factory replacement parts must be used to restore your equipment to original specifications. Manufacturer will not claim responsibility for use of unapproved parts or accessories and other damages as a result of their use.
- If equipment has been altered in any way from original design, manufacturer does not accept any liability for injury or warranty.
- A fire extinguisher and first aid kit should be kept readily accessible while performing maintenance on this equipment



TORQUE SPECIFICATION

Torque figures indicated are valid for non-greased or non-oiled threads and heads unless otherwise specified. Therefore, do not grease or oil bolts or capscrews unless otherwise specified in this manual. When using locking elements, increase torque values by 5%.

* GRADE or CLASS value for bolts and capscrews are identified by their head markings.

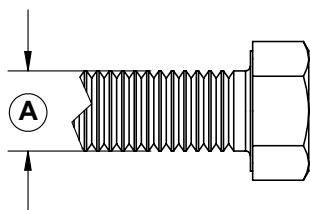
BOLT TORQUE DATA FOR STANDARD NUTS, BOLTS, AND CAPSCREWS

Tighten all bolts to torques specified in chart unless otherwise noted. Check tightness of bolts periodically, using bolt chart as guide. Replace hardware with same grade bolt.

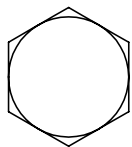
NOTE: Unless otherwise specified, high-strength Grade 5 hex bolts are used throughout assembly of equipment.

Bolt Torque for Standard bolts *						
"A"	GRADE 2		GRADE 5		GRADE 8	
	lb-ft	(N.m)	lb-ft	(N.m)	lb-ft	(N.m)
1/4"	6	(8)	9	(12)	12	(16)
5/16"	10	(13)	18	(25)	25	(35)
3/8"	20	(27)	30	(40)	45	(60)
7/16"	30	(40)	50	(70)	80	(110)
1/2"	45	(60)	75	(100)	115	(155)
9/16"	70	(95)	115	(155)	165	(220)
5/8"	95	(130)	150	(200)	225	(300)
3/4"	165	(225)	290	(390)	400	(540)
7/8"	170	(230)	420	(570)	650	(880)
1"	225	(300)	630	(850)	970	(1310)

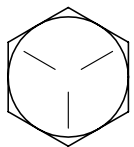
Bolt Torque for Metric bolts *						
"A"	CLASS 8.8		CLASS 9.8		CLASS 10.9	
	lb-ft	(N.m)	lb-ft	(N.m)	lb-ft	(N.m)
6	9	(13)	10	(14)	13	(17)
7	15	(21)	18	(24)	21	(29)
8	23	(31)	25	(34)	31	(42)
10	45	(61)	50	(68)	61	(83)
12	78	(106)	88	(118)	106	(144)
14	125	(169)	140	(189)	170	(230)
16	194	(263)	216	(293)	263	(357)
18	268	(363)	--	--	364	(493)
20	378	(513)	--	--	515	(689)
22	516	(699)	--	--	702	(952)
24	654	(886)	--	--	890	(1206)



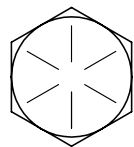
GRADE-2



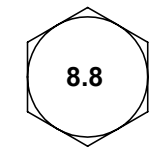
GRADE-5



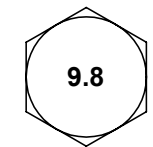
GRADE-8



CLASS 8.8



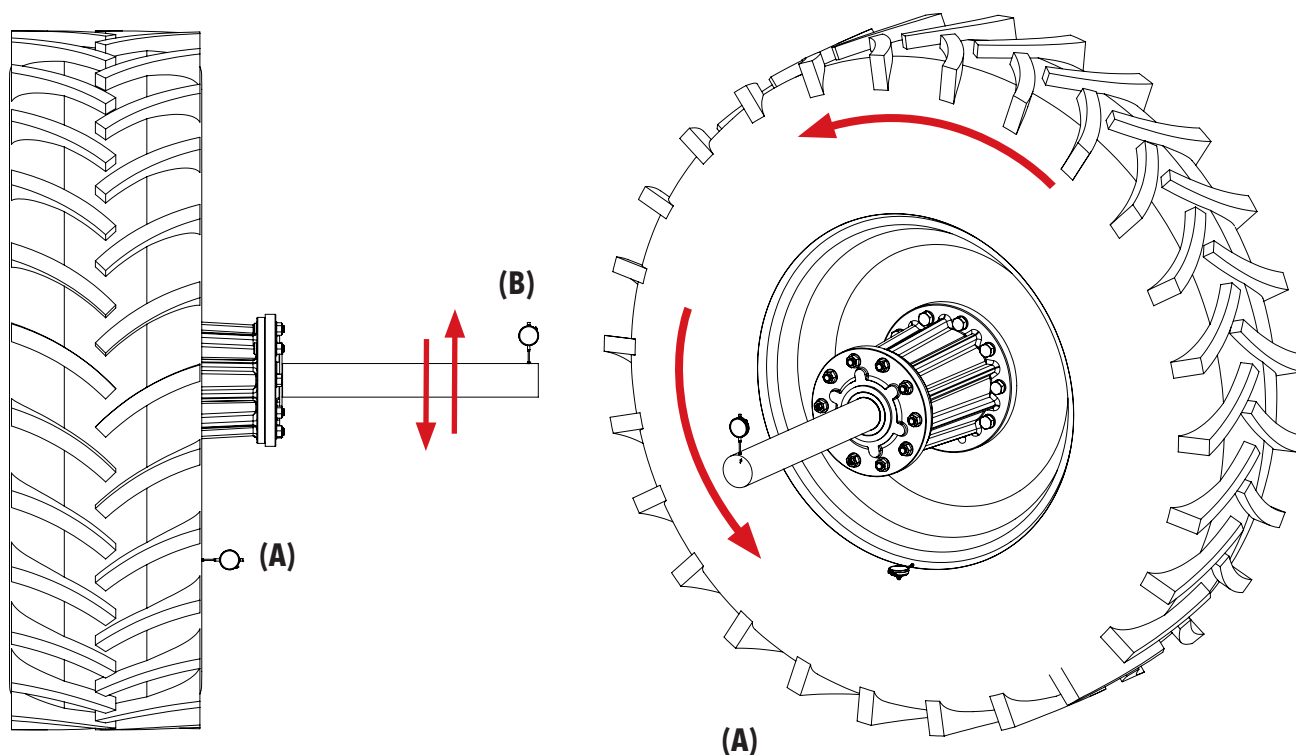
CLASS 9.8



CLASS 10.9



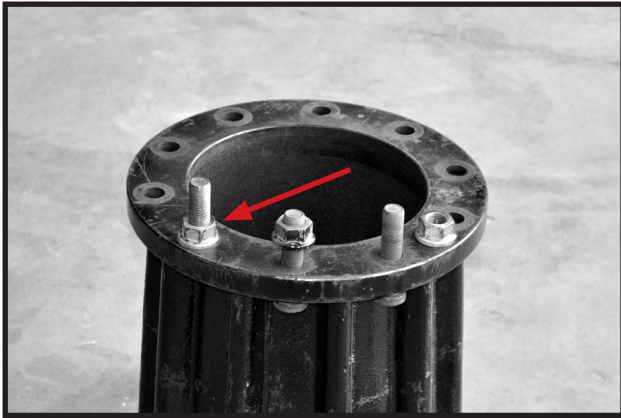
PROCEDURE FOR CHECKING ALIGNMENT/RUN OUT



1. Block wheels to prevent tractor from moving.
2. Raise rear tractor tire.
3. Check rim alignment at 3, 6, 9, or 12 o'clock position while rotating wheel **(A)**.
4. If measurement exceeds 1/4" total, remove wheel and loosen tractor hub (clean hub/axle if necessary) and re-torque according to tractor manufacturer specifications.
5. Reinstall wheel and repeat steps 3 & 4 until measurement is 1/4" or less.
6. Install hub spacer and spindle assembly. Refer to Demco SideQuest operator manual section "Assembly Instructions".
7. To check spindle alignment, rotate wheel and measure at 1" - 2" from end of assembly **(B)**.
8. If measurement exceeds 1/4" total, repeat steps 3 & 4 until proper alignment is achieved.

ASSEMBLY INSTRUCTIONS

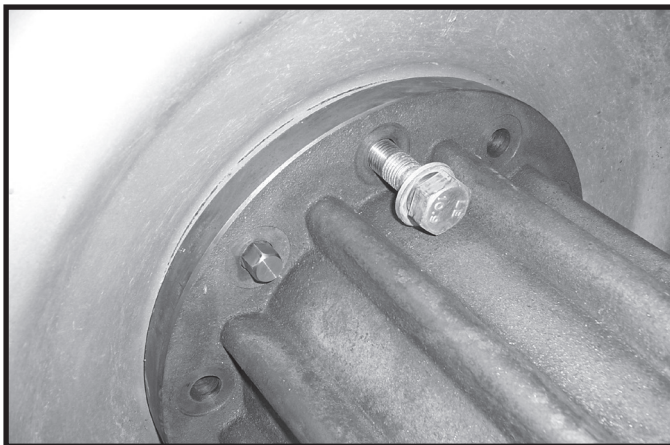
Preparation: Remove any loader brackets from the tractor. The tractors duals must be set to 120" wheel spacing. Mount base plate (specific to your tractor model) to the side of the tractor. See separate instruction found in base plate parts box.



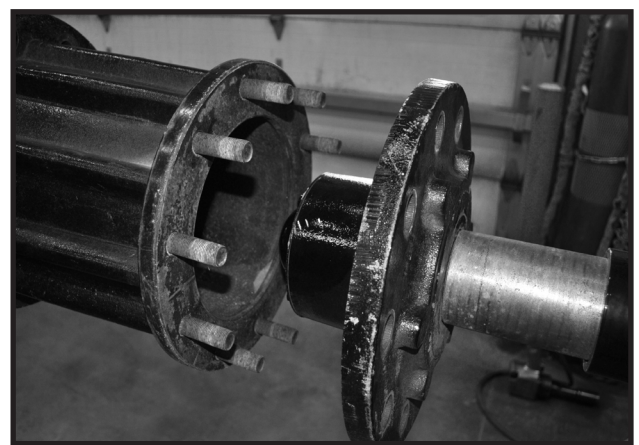
1. Insert 3/4" x 2.875" studs into Hub Spacer using nuts to pull them in.



2. With proper hydraulic jack, lift tractor until weight is off dual wheel but still touching ground. Remove top and bottom lug bolts on the tractors dual. Insert 2 alignment studs (13919-95). Remove the remainder of lug bolts.



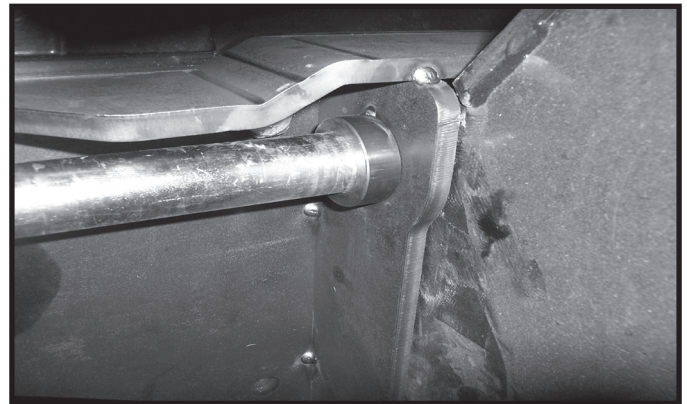
3. Bolt the Hub Spacer to the tractors dual using (8) new Hex Hd. Bolts (specific to tractor model) and tractors original washers. Remove starter studs and install the last 2 Hex Hd. Bolts and tractors original washers. **NOTE: Torque wheel bolts to 450 - 500 ft/lbs.**



4. Bolt the Hub/Spindle Assembly to the Hub Spacer using (10) 3/4" Flange Nuts. **Torque all bolts to the specifications found in this manual.** Slide the Spindle Housing over the spindle and leave loose.



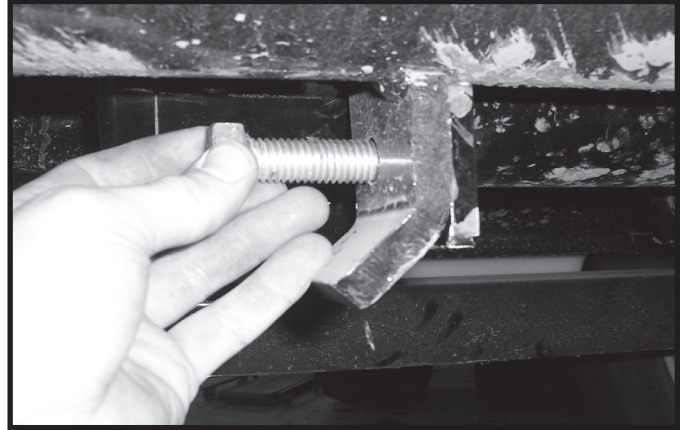
5. Install lower bolt, bushings, washers and nut to overhead arm (see pg. 16 for bolt orientation). Leave lower bolt and bushings loose until arm is aligned and bolted to tank saddle. Mount overhead arm into baseplate using notch for lower bolt.



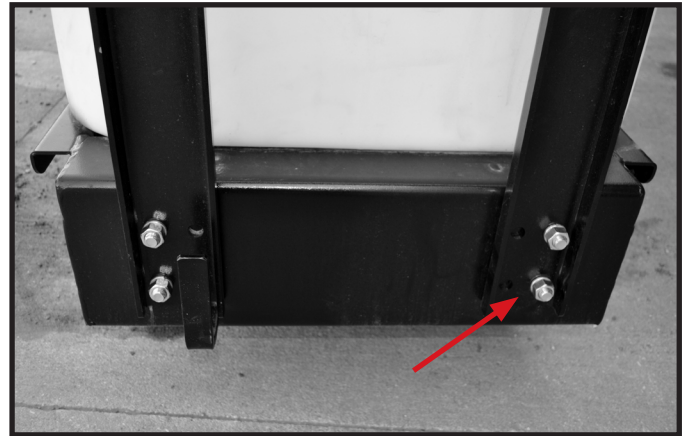
6. Raise overhead bracket and install top pin. Leave lower bolt and bushings loose at this time.



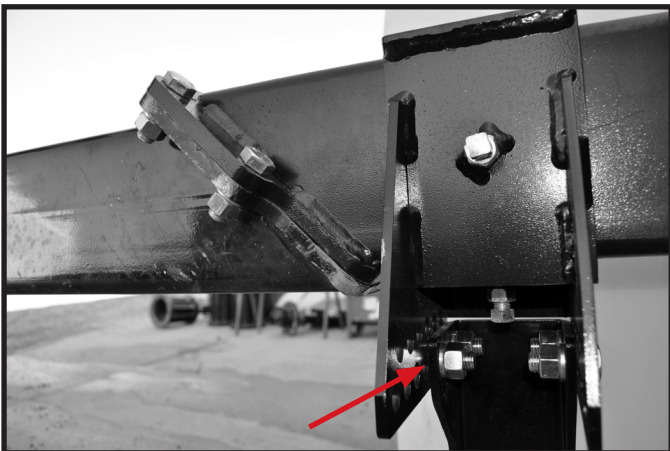
7. Using a fork lift, lower tank assy down onto Spindle Housing. Install 3/4" bolts and nuts into Spindle Housing. Leave bolts loose.



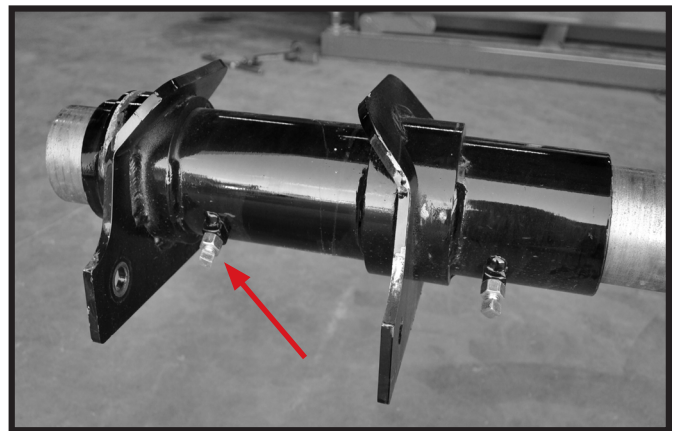
8. Install Extension Arm onto Overhead Arm using (4) 5/8" bolts, lockwashers and nuts. Install (2) Slide Tubes Assemblies onto Extension Arm.



9. Line up Drop Channel holes to the holes on front of Tank Assembly. This will vary depending on type of tractor and wheel base. Install (4) 5/8" bolts, lockwashers and nuts.



10. Attach a Drop Channel to each Slide Tube Assembly. Use (4) 5/8" bolts, lock washers and nuts.



11. Install (4) 1/2" set screw and jam nut in each Spindle Housing and (2) in each Slide Tube Assembly.

12. Tighten all bolts and set screws.

13. Repeat same instructions for the opposite side.

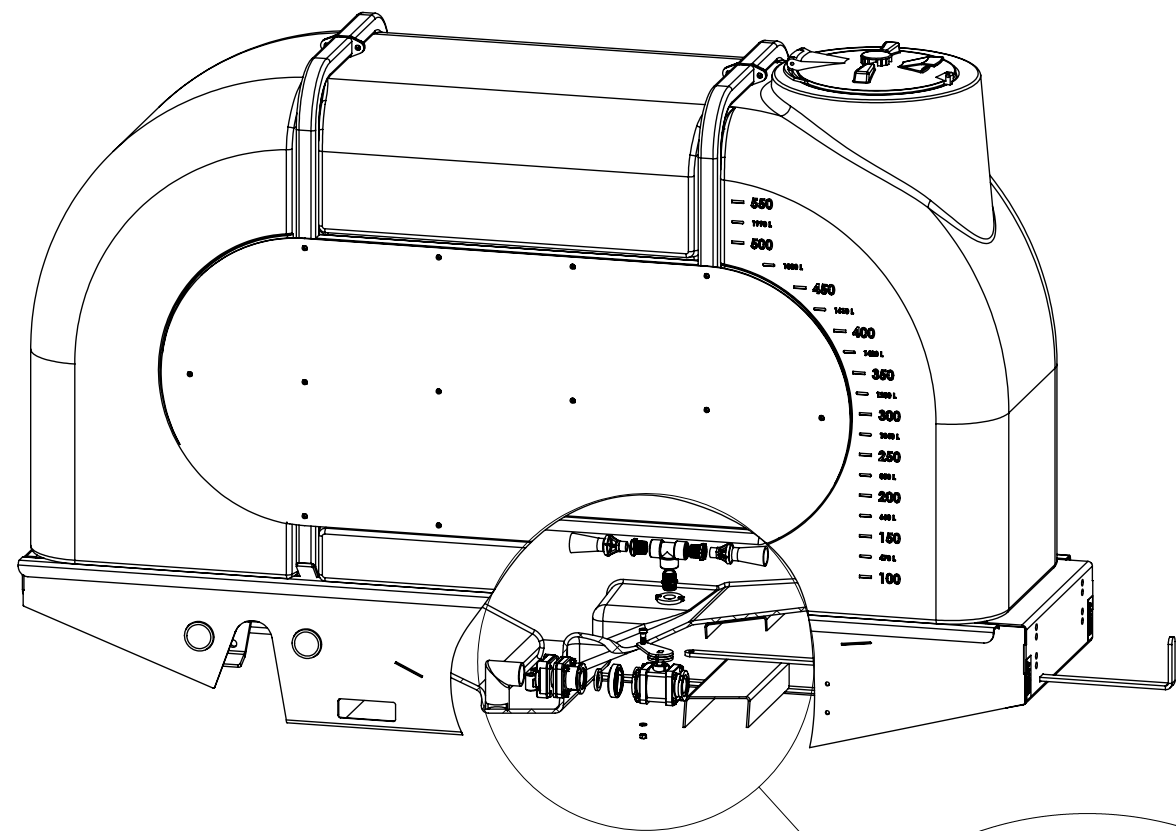
14. To remove tanks:

- Remove 5/8" bolts from overhead and 3/4" bolts from spindle housing.
- Lift tank vertically until clear of spindle housing
- Remove hub/spindle assy from spacer (see step 4)
- Optional - remove overhead using pin to release

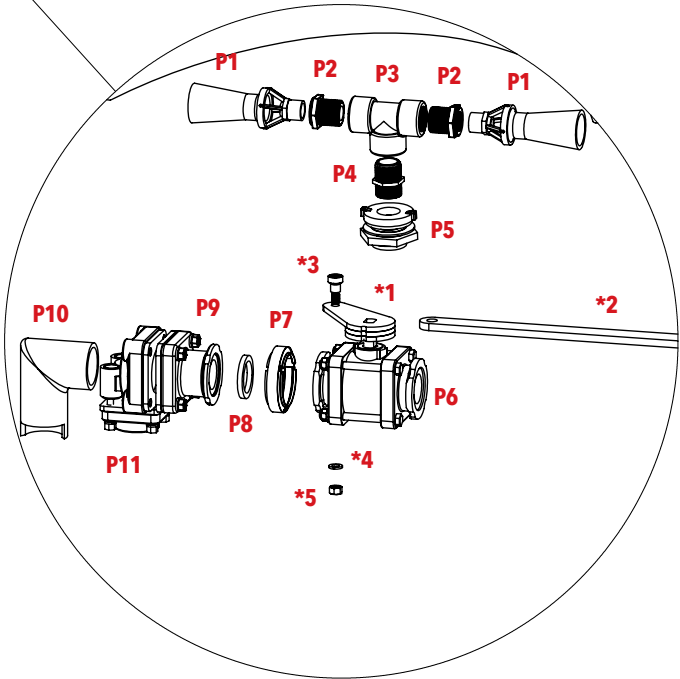
Note: keep overhead arms separate as left or right

PLUMBING BREAKDOWN

SIDEQUEST® PLUMBING BREAKDOWN

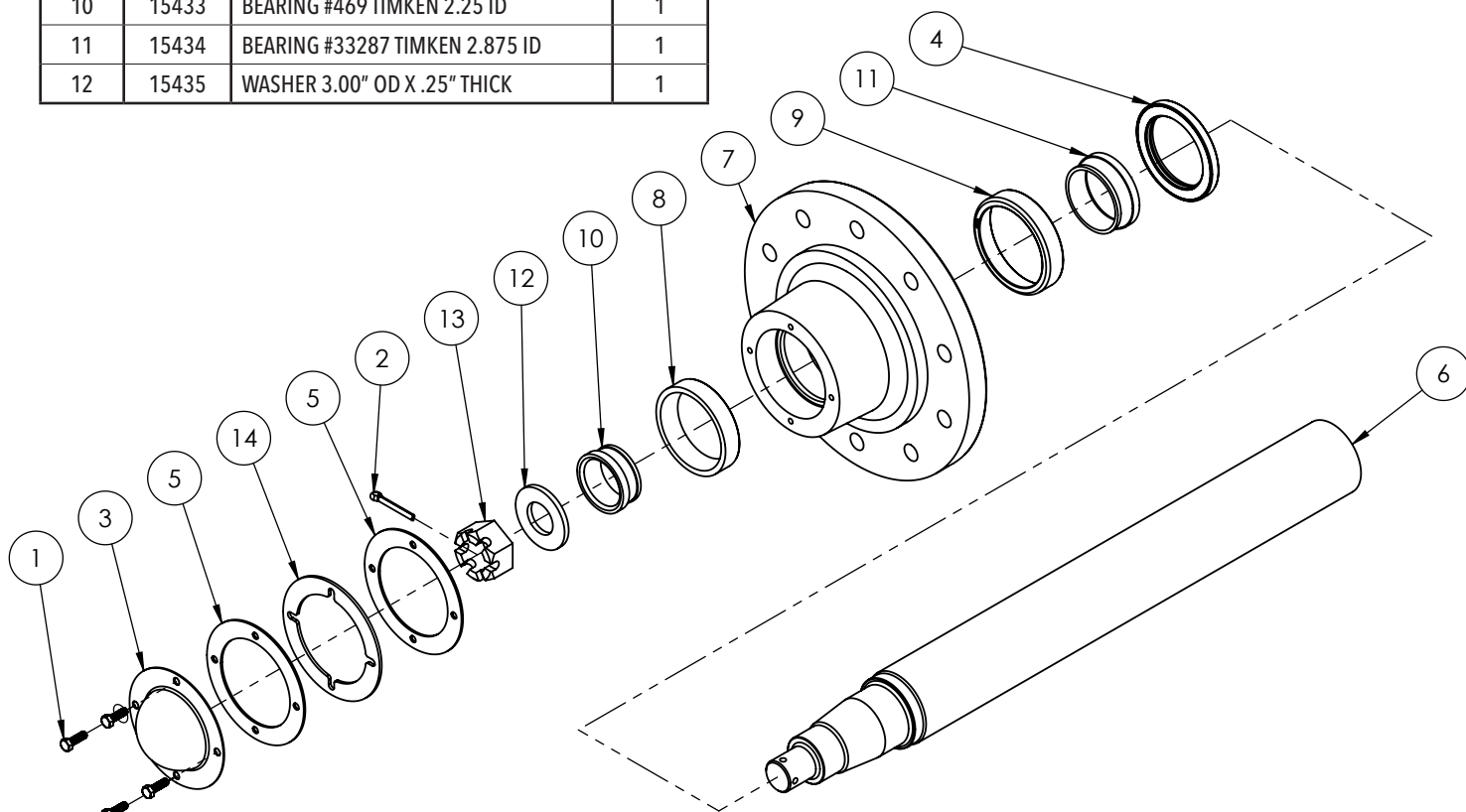


ITEM	PART #	DESCRIPTION	QTY
P1	09941	AGITATOR JET HV .75" MPT	2
P2	BRB1034	FTG, REDUCER, 1" MPT X .75" FPT	2
P3	BTT100	FTG, TEE, 1" FPT, GFP	1
P4	BM1000	FTG, NIPPLE, 1" MPT, GFP	1
P5	P100DA	FTG, 1", F/POLYTANK -ACE	1
P6	MV200CF	VALVE, BALL, MANIFOLD, FL. PORT 2"	1
P7	09939	CLAMP, 2", F/FLG FTG	1
P8	112G	GASKET, 1.50" X .25"	1
P9	FTF200	2" FLANGE TANK FITTING	1
P10	10267	2" ELBOW SIPHON FITTING	1
P11	BF100BDS	FTG TANK 1" BOTTOM DRAIN	1
*1	13808-76	VALVE HANDLE	1
*2	13809-15	VALVE HANDLE LINKAGE YELLOW	1
*3	13838	SHOULDER BOLT .375 X 1	1
*4	00060	.375 LOCKWASHER	1
*5	00061	.375 HEX NUT	1



ITEM	PART #	DESCRIPTION	QTY.
1	02990	BOLT, .313 NC X 1.00 HEX HEAD GR.5	4
2	05088	COTTER PIN, .25 X 2.00	1
3	07362	HUB CAP F/ #871 & #873	1
4	09055	OIL SEAL F/ 873 HUB	1
5	09532	HUB CAP GASKET	2
6	15431	SPINDLE, SIDEQUEST GEN3	1
7	15456	10-HOLE HUB #873 (INCLUDES #8 & #9)	1
8	13627	OUTER RACE 453A TIMKEN	1
9	15468	INNER RACE 33462 TIMKEN	1
10	15433	BEARING #469 TIMKEN 2.25 ID	1
11	15434	BEARING #33287 TIMKEN 2.875 ID	1
12	15435	WASHER 3.00" OD X .25" THICK	1

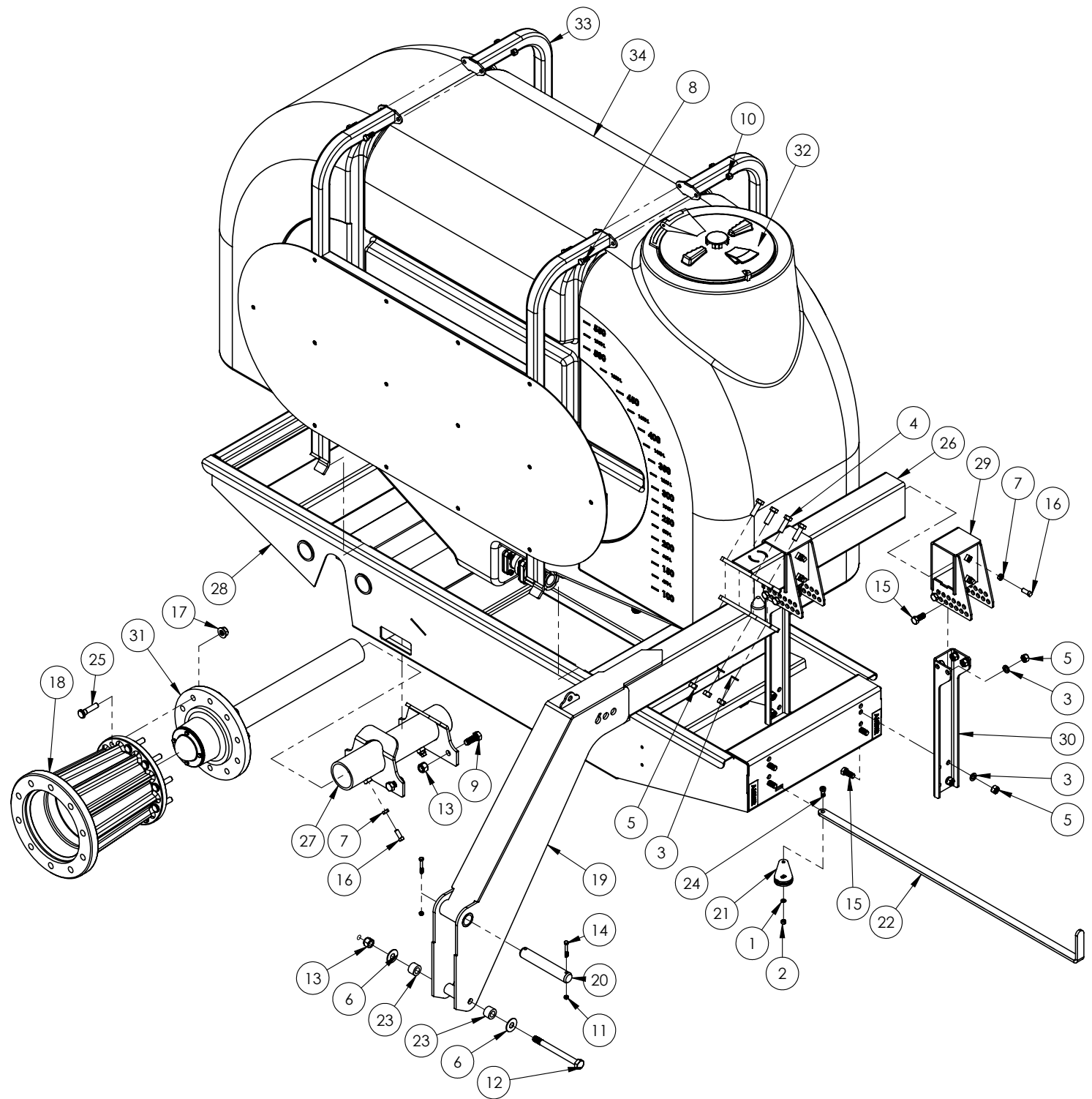
ITEM	PART #	DESCRIPTION	QTY.
13	15436	CASTLE NUT 1-1/2"-12 UNF-2B	1
14	15476	HUB CAP SPACER	1
Please order replacement parts by PART #. and DESCRIPTION.			



Wheel Bearing Adjustment

1. Tighten castle or slotted hex nut to initial torque indicated on chart while turning hub in both directions to insure all bearing surfaces are in contact.
2. Back nut off and repeat step #1.
3. Back nut off, do not allow hub to turn.
4. Tighten nut to final torque indicated on chart.
5. Install cotter pin, if needed loosen or tighten nut to the next closest locking slot.
6. Chuck hub for end play.
7. If end play can be felt, start over and readjust bearings. If end play is felt again, try readjusting with a different castle or slotted hex nut.
8. The bearing are set correctly when no end play can be felt after adjustment.

Hub	Initial Toque	Final Torque
SQ1200	90 ft/ lbs	60 ft/lbs



600 GALLON SIDEQUEST® BREAKDOWN

ITEM	PART #	DESCRIPTION	QTY
1	00060	WASHER .375 LOCK	1
2	00061	NUT .375NC HEX	1
3	00248	WASHER .625 LOCK	16
4	00290	BOLT .625NC X 2.00	4
5	00291	NUT .625NC HEX	16
6	00492	WASHER .75 FLAT	2
7	00640	NUT .50NC JAM	8
8	00967	BOLT .50NC X 1.25	4
9	01235	BOLT .75NC X 2.00	4
10	02178	NUT .50NC NYLON LOCK	4
11	02802	NUT .313NC NYLON LOCK	2
12	02851	BOLT .75NC X 8.50	1
13	02961	NUT .75NC NYLON LOCK	5
14	03547	BOLT .313NC X 2.25	
15	04051	BOLT .625NC X 1.50	12
16	06102	SET SCREW .50NC X 1.25 CUP	8
17	07435	NUT .75UNF FLANGE	10
18	14989	CAST HUB SPACER, LG BORE	1
19	16865-76	OVERHEAD ARM SQ1200	1
20	13802-95	OVERHEAD PIN	1
21	13808-76	VALVE HANDLE	1
22	13809-15	VALVE HANDLE	1
23	13816-95	BUSHING 1.5 X 1.0	2
24	13838	BOLT .375NC X 1.00 SHOULDER	1
25	13860	STUD .75UNF X 2.875	10
26	14939-76	EXTENSION ARM	1
27	15427-76	SPINDLE HOUSING	1
28	15428-76	SADDLE FOR SIDEQUEST®	1
29	15429-76	SLIDE TUBE ASSEMBLY	2
30	15430-76	DROP CHANNEL, WIDE	2
31	15448-35	HUB/SPINDLE ASSEMBLY	1
32	5486A	REPLACEMENT LID ASSEMBLY	1
33	5956	SIDE PLATE ASSEMBLY	2
34	14015	TANK W/FITTINGS & LID YELLOW	1
--	14015C	TANK W/FITTINGS & LID CHARCOAL	1
Please order replacement parts by PART# and DESCRIPTION			

SPRAYER CHECKLIST

Downtime caused by field breakdowns is costly and time consuming. Many breakdowns can be eliminated by periodic equipment maintenance. By spending time reviewing this checklist before seasonal spraying application time and following proper after season care, you can save time and money later.



WARNING: To Prevent Serious Injury Or Death

- **Keep hands, feet, and loose clothing away from rotating parts.**
- **Wear protective clothing recommended by your chemical and fertilizer manufacturer when working with chemicals.**

Check Before Going To The Field :

1. NOZZLES

Check tip for excessive wear by checking for grooves in or near tip opening. Check nozzle spacing by starting at center and working outwards. Check boom for proper height.

2. HOSES

Check all hoses for worn or soft spots. Be sure all hose clamps are tightened and hoses are not kinked or pinched. Check for leakage in any lines.

3. TANK

Remove and clean agitator orifices. Check orifices for excessive wear by checking for grooves in or near orifice opening. Inspect fitting and grommets to insure they are in good condition.

4. CONTROLS

Check for leakage, plugging, or wear on all valves, fittings, etc. Clean off any build up of foreign material.

5. PUMP

Check to be sure pump turns freely.

6. FRAME

Be sure all bolts are tightened.

7. REPLACEMENT PARTS

Replace all worn or damaged parts.

After Season Care:

NOTE: It is important to wear proper safety equipment when cleaning the SIDEQUEST®. See your chemical or fertilizer package for this information.

1. After spraying chemicals, run water mixed with cleaners through tank, pump and all hose hookups. If wettable powder dries out in the system, it is very difficult to put back into suspension and can cause malfunction, damage or injury.

2. When cleaned, tank should have all openings closed or covered to keep dirt from entering.

3. Pump should be flushed with soluble oil and pump ports plugged to keep out moisture and air.

4. Disassemble tips and rinse with water or cleaning solution. (Appropriate for chemical sprayed).

5. Clean tip opening with a wooden toothpick. Never use wire or hard object that could distort opening.

6. Dispose of all unused chemicals or solutions in a proper and ecologically sound manner.

7. Water rinse and dry tips before storing.

NOTE: DEMCO does not and will not make any recommendations concerning application of various chemicals or solutions. These recommendations relate to either amount or procedure of materials applied. If you have any questions regarding application of certain chemicals or solutions, contact your chemical supplier and follow chemical manufacturer recommendations.

THIS PAGE INTENTIONALLY LEFT BLANK



4010 320th St., Boyden, IA. 51234

Phone: (712) 725-2311

Fax: (712) 725-2380

Toll Free: 1-800-54DEMCO (1-800-543-3626)

**Demco warranty policies, operator manuals, and product registration
can be found online:**

www.demco-products.com