

DEMCO

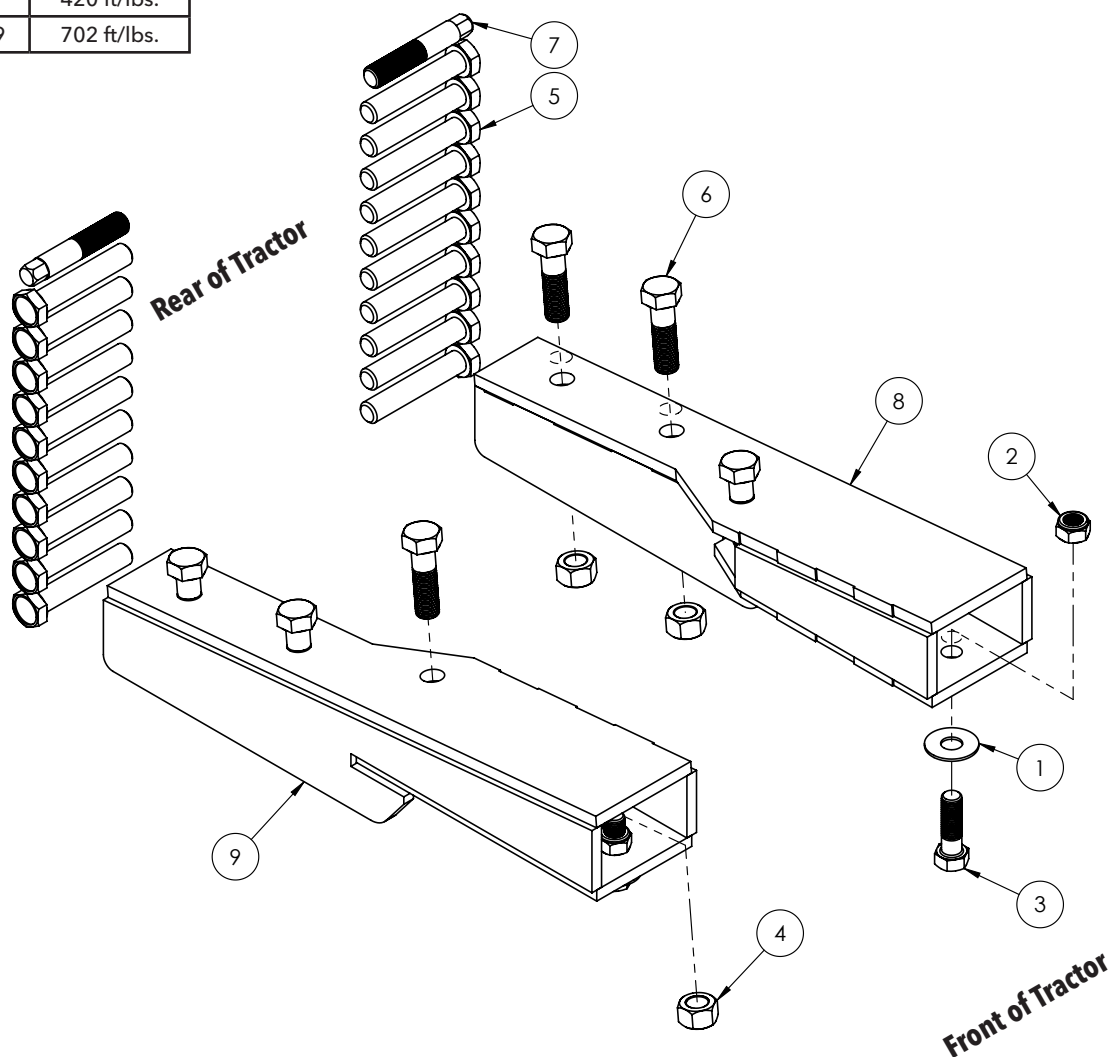
SIDEQUEST 1200®

CASE IH STEIGER
350, 400, 450
NEW HOLLAND STANDARD FRAME
T9.390, T9.450, T9.505, T9.560

AC20098 , Rev 2
2/19

READ complete manual CAREFULLY BEFORE attempting operation.

BOLT TORQUE SPECIFICATIONS		
Size	Grade	Torque
3/4"	5	290 ft/lbs.
7/8"	8	420 ft/lbs.
22MM	10.9	702 ft/lbs.



Important: Recheck Wheel Cap Screw Torque
Every 2 hours of operation until cap screws turn less the 1/4 turn.
Recheck once per day until cap screws turn less the 1/8 turn.
Recheck every 7 days until cap screws turn less the 1/4 turn.

ITEM	PART #	DESCRIPTION	QTY.
1.	00492	Washer, 3/4"	4
2.	02961	Nut, 3/4" Nylon Insert Lock	4
3.	05047	Bolt, 3/4NC x 2.50 Gr5	8
4.	10678	Nut, 7/8" Nylon Insert Lock	4
5.	13222	Bolt, 22MM-2.50 x 120MM Gr10.9	20
6.	13223	Bolt, 7/8NC x 3.00 Gr8	8
7.	13919-95	Starter Stud	2
8.	14596-35	Lt Baseplate f/ New Holland/CaseSQ1200	1
9.	14597-35	Rt Baseplate f/ New Holland/Case SQ1200	1

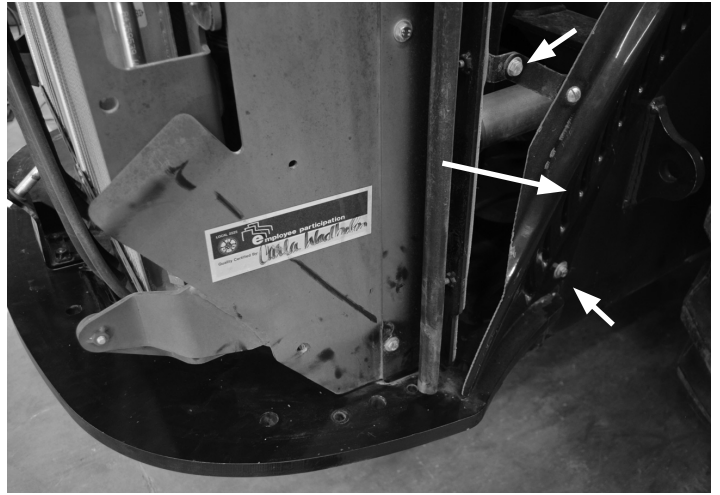
Please order replacement parts by **PART NO.** and **DESCRIPTION.**

Baseplate Install Instructions

Preparation: Remove any loader/blade brackets from the tractor. The tractors duals must be set to 120" wheel spacing.



1. Remove step/toolboxes brackets and front weight.



2. Loosen or remove engine shield during installation process.



3. Install Right Baseplate using 7/8" x 3.00" Bolts with 7/8" Nylon Lock Nuts. Tighten to 420 ft-lbs. Repeat for the left side.

4. Reinstall engine shield. Install crosstube hardware and torque to specified values on front cover of instructions.

