



Doing Our Best to Provide You the Best

8E000062, Rev AA
8/02/22

COMBINE GRAIN TANK EXTENSION TIP-UP KIT

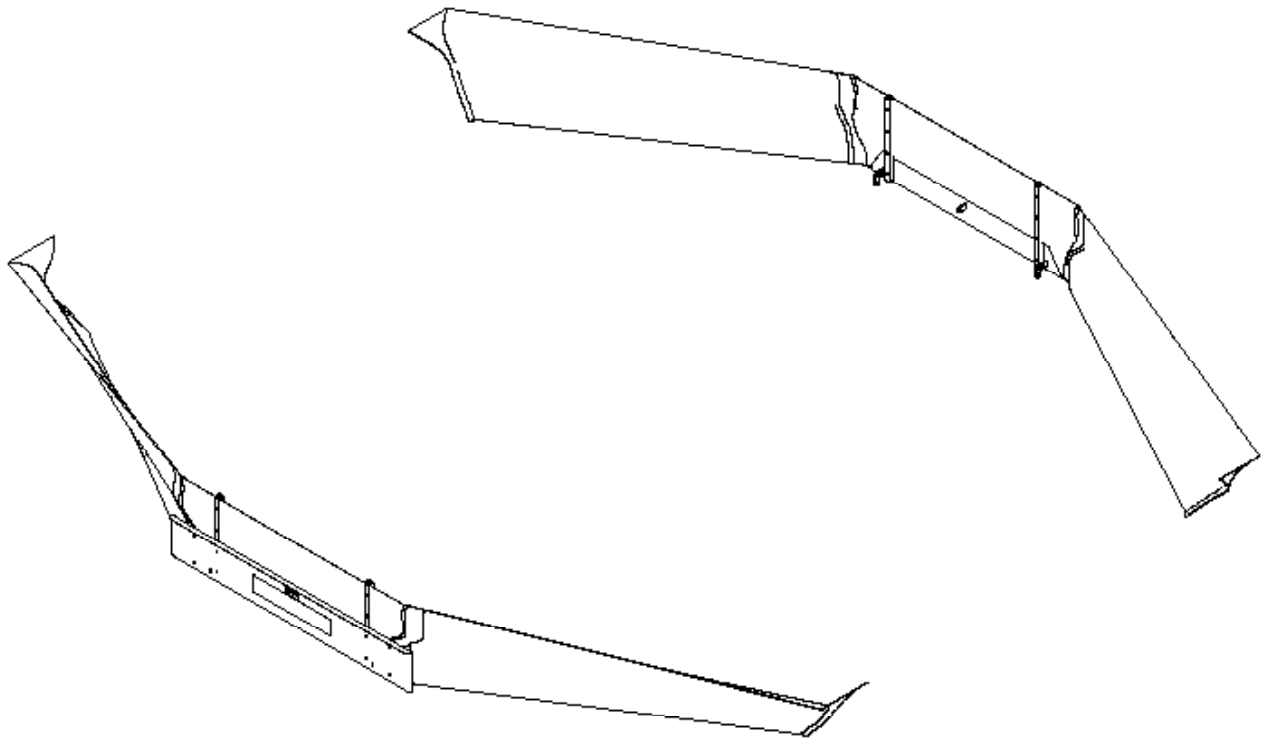
9E000064 - John Deere X9 1100 Tip-Up

FITS: JOHN DEERE X9 1100 COMBINES

**PLACE IN COMBINE CAB AFTER ASSEMBLY
FOR FUTURE REFERENCE.**



**FOR USE ON COMBINES WITH
POWER FOLD COVER ONLY**



**ASSEMBLY
OPERATION
REPLACEMENT PARTS**

OPERATOR MANUAL

INTRODUCTION

Thank you for purchasing a Demco grain tank extension Tip-Up Kit. Proper care and use will result in many years of service.

WARRANTY POLICY, OPERATOR MANUALS, PARTS MANUALS & REGISTRATION

Go online to www.demco-products.com to review Demco warranty policies, operator manuals and register your Demco product.



WARNING: TO AVOID PERSONAL INJURY OR DEATH, OBSERVE FOLLOWING INSTRUCTIONS:

Ensure that anybody present is clear before applying power to any machinery used in conjunction with a Demco grain tank extension.

Never allow anyone in or near the grain tank of a combine during loading or unloading of grain. The accumulation of grain is dangerous and can cause entrapment, resulting in serious injury or death by suffocation.

Adding a Demco Bin Extension or Tip-Up increases the overall height of your combine. Use caution when operating around trees, buildings, power lines, and when approaching bridges and over passes. Pay attention to height restrictions.

Do not exceed advertised maximum capacity of a Demco grain tank extension.

GENERAL INFORMATION

1. Read assembly instructions carefully. Study assembly procedures and all illustrations before you begin assembly. Note which parts are used in each step. This unit must be assembled in proper sequence or complications will result.
2. When placing a parts order, refer to this manual for proper part numbers and place order by **PART NO.** and **DESCRIPTION.**
3. Whenever terms "LEFT" and "RIGHT" are used in this manual it means from a position behind combine and facing forward.

TABLE OF CONTENTS

General Information	2
Safety, Signal Words	3
Product Safety Guidelines.....	4
Product Disclaimer.....	4
Safety Sign Locations.....	5
Safety Sign Care	5
Parts Breakdown	6
Assembly Instructions	7-10

TAKE NOTE! THIS SAFETY ALERT SYMBOL FOUND THROUGHOUT THIS MANUAL IS USED TO CALL YOUR ATTENTION TO INSTRUCTIONS INVOLVING YOUR PERSONAL SAFETY AND SAFETY OF OTHERS. FAILURE TO FOLLOW THESE INSTRUCTIONS CAN RESULT IN INJURY OR DEATH!



**THIS SYMBOL MEANS
ATTENTION
BECOME ALERT
YOUR SAFETY IS INVOLVED!**

SIGNAL WORDS:

This manual uses the following signal words--**DANGER**, **WARNING**, and **CAUTION**-- with safety messages. The appropriate signal word has been selected using the following guidelines.

DANGER:

Indicates an imminently hazardous situation that, if not avoided, will result in death or serious injury. This signal word is to be limited to most extreme situations typically for machine components which, for functional purposes, cannot be guarded.

WARNING:

Indicates a potentially hazardous situation that, if not avoided, could result in death or serious injury, and includes hazards that are exposed when guards are removed. It may also be used to alert against unsafe practices.

CAUTION:

Indicates a potentially hazardous situation that, if not avoided, may result in minor or moderate injury. It may also be used to alert against unsafe practices.

If you have questions not answered in this manual, require additional copies, or if your manual is damaged, please contact your dealer or DEMCO, 4010 320th Street, Boyden, IA 51234
ph: (712) 725-2311 or Toll Free: 1-800-543-3626 Fax: (712) 725-2380 or 1-800-845-6420
<http://www.demco-products.com>



PRODUCT SAFETY GUIDELINES

Every year many accidents occur which could have been avoided by a few seconds of thought and a more careful approach to handling equipment. You, the operator, can avoid many accidents by observing the following precautions in this section. To avoid personal injury, study the following precautions and insist those working with you, or you yourself, follow them.

Replace any caution, warning, danger or instruction safety decal that is not readable or is missing. Location of such decals is indicated in this booklet.

Review safety instructions with all users annually.

Operator should be a responsible adult. **DO NOT ALLOW PERSONS TO OPERATE OR ASSEMBLE THIS UNIT UNTIL THEY HAVE DEVELOPED A THOROUGH UNDERSTANDING OF SAFETY PRECAUTIONS AND HOW IT WORKS.**

Do not paint over, remove, or deface any safety signs or warning decals on your equipment. Observe all safety signs and practice instructions on them.

Never exceed limits of a piece of machinery. If it's ability to do a job, or to do so safely is in question **DON'T TRY IT.**

Adding a Demco Bin Extension or Tip-Up increases the overall height of your combine. Use caution when operating around trees, buildings, power lines, and when approaching bridges and over passes. Pay attention to height restrictions.

Fold and secure (if needed) the grain tank extension panels when transporting the combine to avoid contact with low power lines and other obstructions.

Ensure that any additional bracing and safety equipment have been installed according to this manual. (Some models do not require additional bracing or safety equipment)

Never exceed the maximum advertised capacity of the grain tank extension. By doing so you risk damage to the grain tank extension and combine.

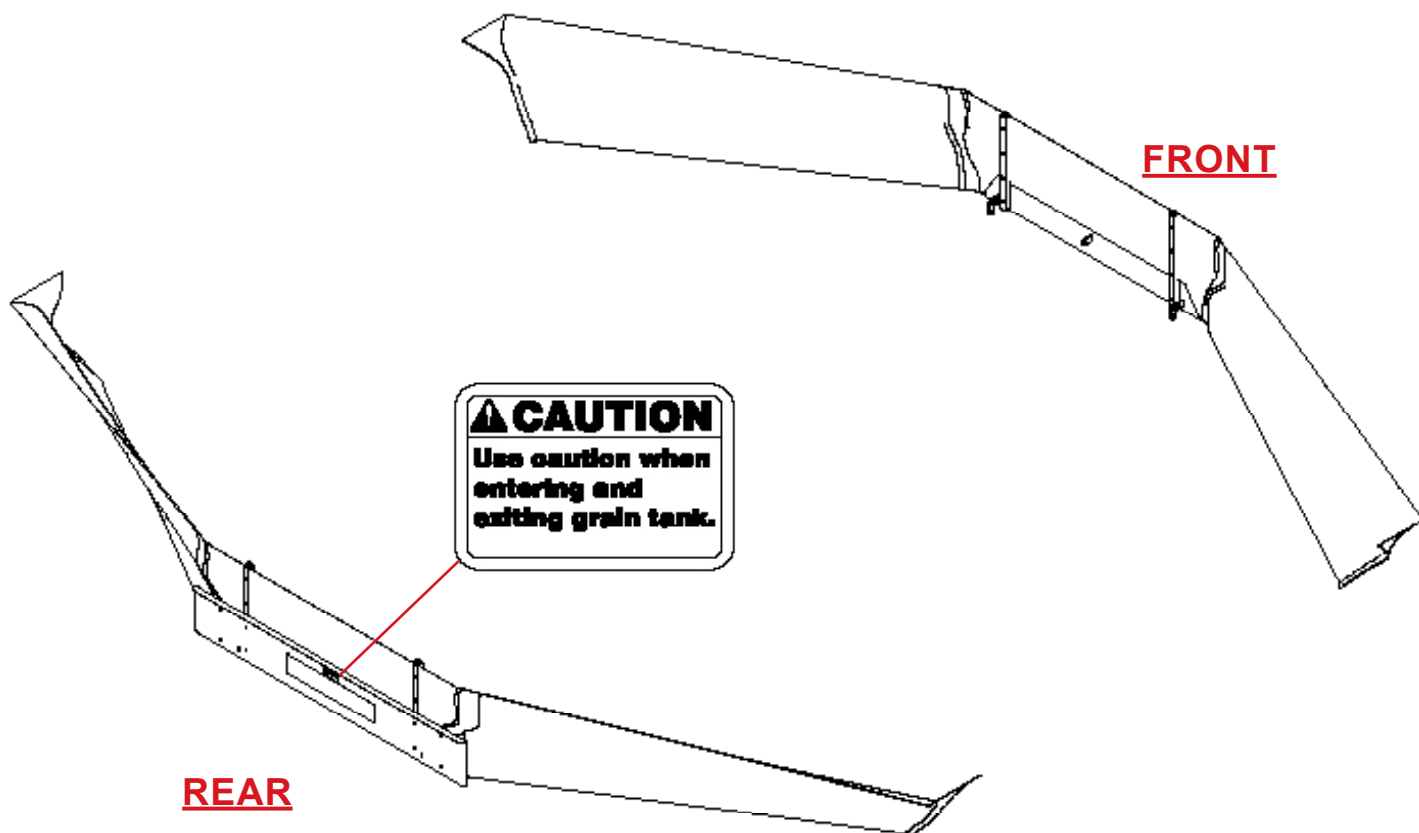
PRODUCT DISCLAIMER

Certain Demco products are mounted on machinery which is not made by Demco. The mounting and use of the Demco product is at the discretion of the owner. Mounting Demco equipment on any machinery may affect the structural aspects of the machinery as well as drive line components and tires. Demco does not assume liabilities, or make any warranties pertaining to the structural stability or performance of any machinery on which a Demco product is mounted. See the manufacturer's owners/operators manual for specifications and safety information. Consult with your machinery dealer to determine whether the Demco product will adversely affect structural aspects of any machinery.



SAFETY SIGN LOCATIONS

Types of safety sign and locations on equipment are shown in illustration below. Good safety requires that you familiarize yourself with various safety signs, type of warning, and area or particular function related to that area, that requires your SAFETY AWARENESS.



SAFETY SIGN CARE

- Keep safety signs clean and legible at all times.
- Replace safety signs that are missing or have become illegible.
- Replacement parts that displayed a safety sign should also display current sign.
- Safety signs are available from the Spencer plant.

JD X9 (1100) Tip-Up Kit

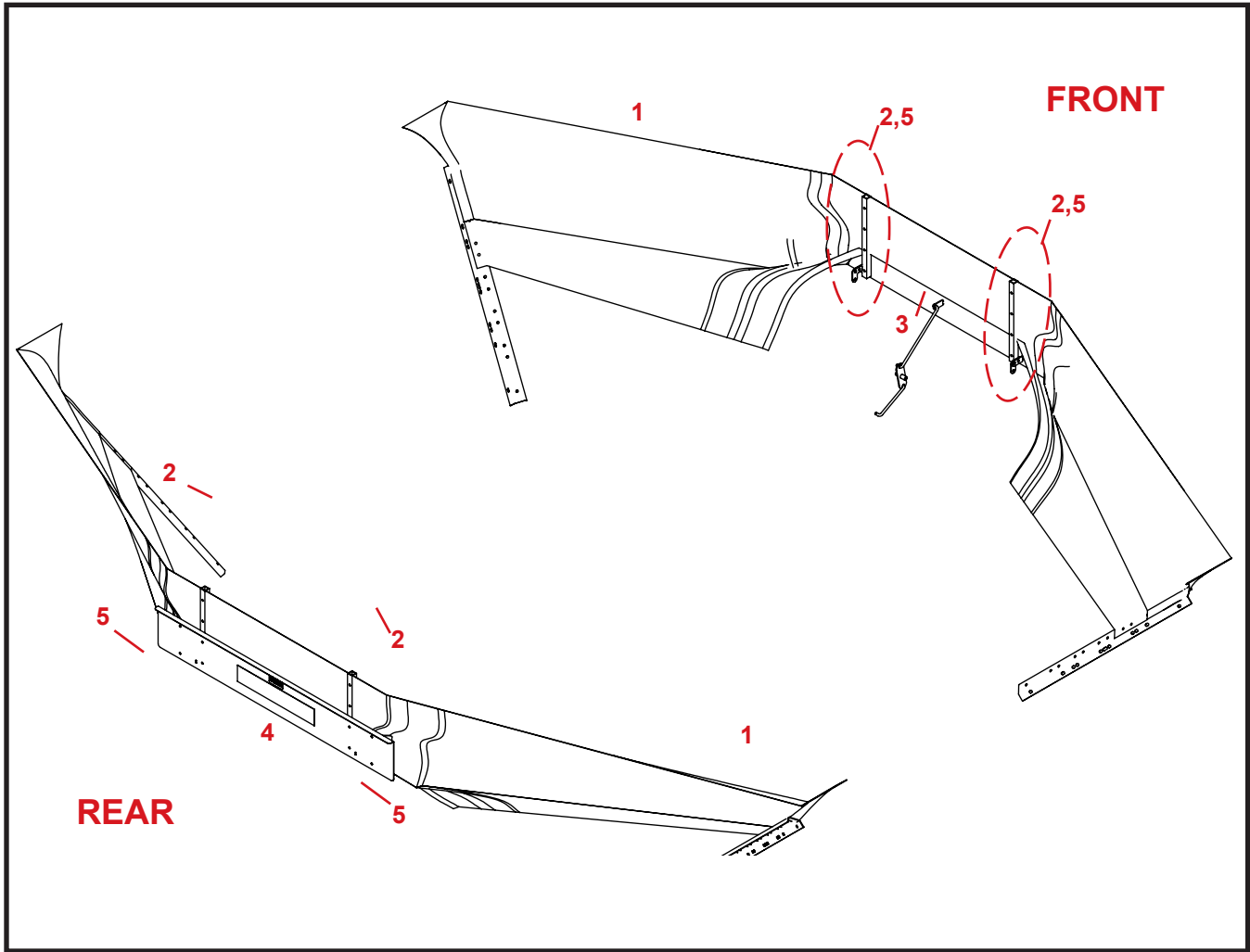


Figure 1

ITEM	PART #	QTY	DESCRIPTION
1	1AU00000293	2	X9 1100 TIP-UP CORNER
2	1AU3E000374	4	X9 TIP-UP PANEL MOUNT TUBES
3	R5E000256P0	1	X9 TIP-UP FRONT PANEL ASSEMBLY
4	R5E000262P0	1	X9 TIP-UP REAR PANEL ASSEMBLY
5	R3E000373P0	4	X9 TIP-UP PANEL BOT BRACKET
6	R3E000377P0	2	X9 TIP-UP SENSOR BRACKET
7	R3E000378P0	1	X9 AUGER DEFLECTOR
8	1AF009E0000	20	5/16" FLAT WASHER
9	1AFC08E0000	44	5/16" FLANGE NUT
10	1AFC12EAAL5	16	5/16" X 1-3/4" FLANGE BOLT
11	1AFC35FAA00	4	5/16" X 1" SELF TAP FLANGE BOLT
12	1AFC37E00L0	20	5/16" X 3/4" FLANGE BOLT
13	1AFC37EAAD5	8	5/16" X 1-1/4" FLANGE BOLT

Please order replacement parts by PART NO. and DESCRIPTION



ATTENTION: During assembly ensure the following safety decals are located correctly. See illustration on page 5.



Located on outside of rear panel.

STEP 1:

Remove cotter pin and washer (retain for future use) from the upper linkage and unhook. Partially remove factory corners from front and rear fiberglass tip-up panels by removing nuts and washers. Remove tank camera if present. Remove hinge nuts, spacer, L brackets, and bolts (retain for future use) and set aside the fiberglass panel. See Figure 2.

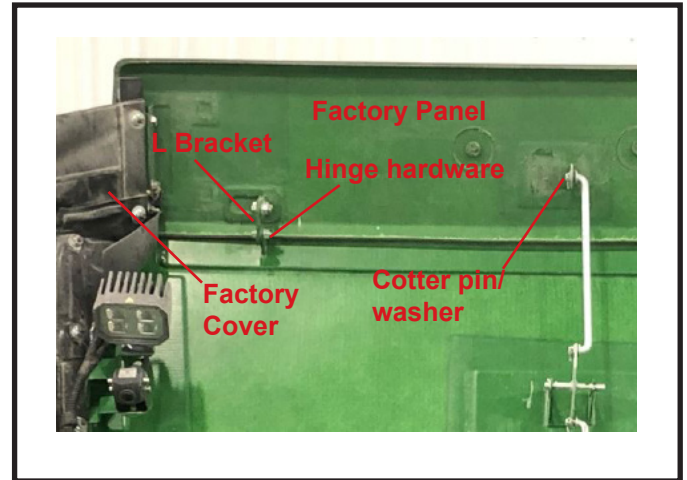


Figure 2

STEP 2:

Attach two Panel Bolt Brackets (5) to the Front Panel Assembly (3) using the 5/16" x 3/4" flange bolts (12) and 5/16" flange nuts (9) provided. See Figure 3.

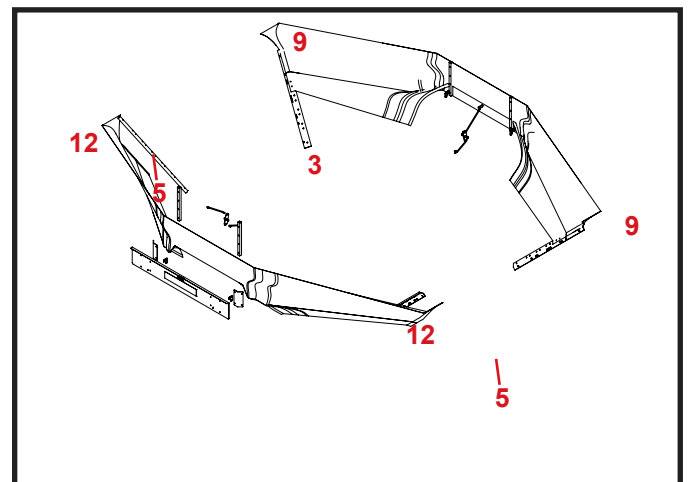


Figure 3

STEP 3:

Use the M8 bolts, M8 nuts, spacer, and L bracket from Step 1 to attach the Front Tip-Up Panel Assembly (3) to the factory front panel. **Do not attach Linkage at this time.** See Figure 4.

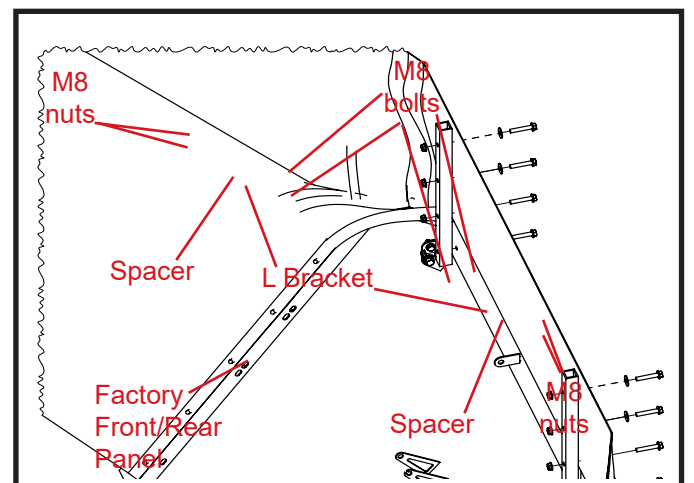


Figure 4

ASSEMBLY INSTRUCTIONS

STEP 4:

Attach the Tip-Up Corner (1) to the Front Panel Assembly (3) using the Panel Mount Tubes (2), 5/16" x 1 3/4" bolts (10), 5/16" flat washers (8), and 5/16" flange nuts (9) provided. See Figure 5.

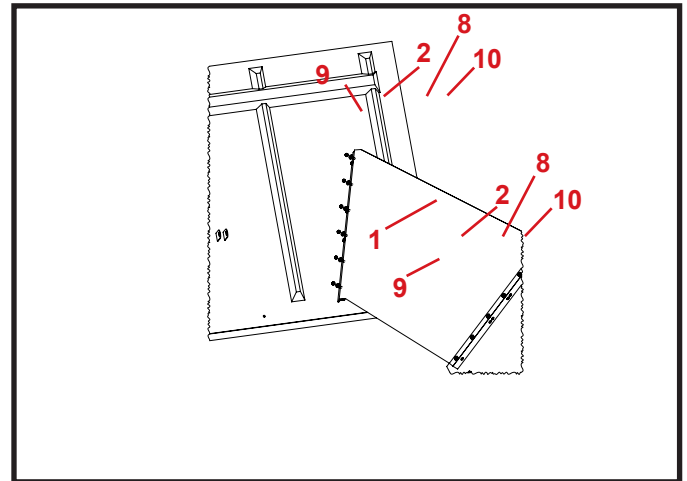


Figure 5

STEP 5:

Attach both the factory corner and the Tip-Up Corner (1) to the Panel Bolt Bracket (5) using 5/16" x 1 1/4" bolts (13) and 5/16" flange nuts (9) provided. Repeat for the opposite side. See Figure 6.

If tank camera is present, attach to upper-most 5/16" x 1 1/4" bolt (13) in the Panel Bolt Bracket (5) on the corresponding side.

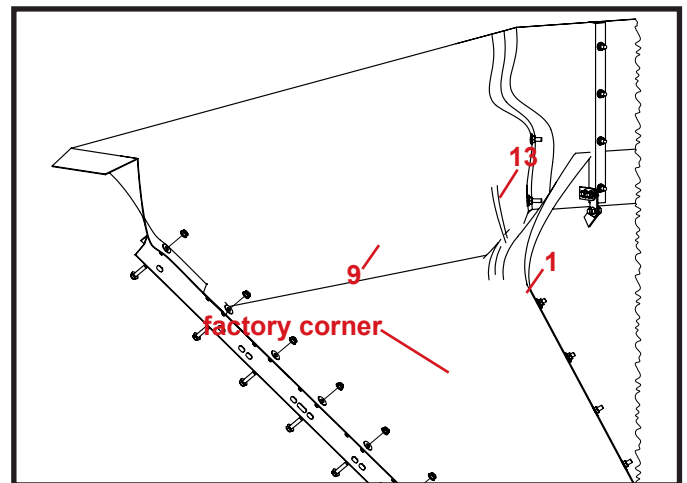


Figure 6

STEP 6:

On the right panel, remove the top two M8 nuts and washers from the factory cover. Attach the Tip-Up Corner (1) then reinstall the top two M8 nuts and washers. Pull the Tip-Up Corner (1) taut and insert the 5/16" x 1" self tapping bolt (11) and 5/16" flat washer (8) provided. Repeat for the left side.

See Figure 7.

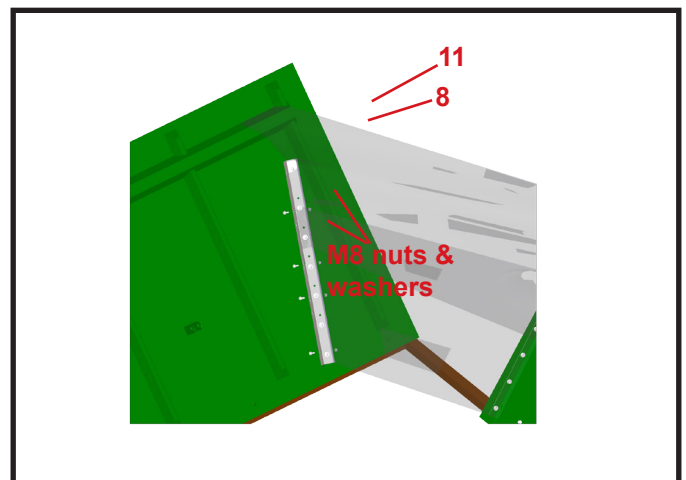


Figure 7

STEP 7:

Attach the factory linkage to the Front Panel Assembly (3) using the washer and cotter pin from Step 1. See Figure 8.

Note: Pressure on the outer side of the Panel Assembly will be needed to align the linkage rod with the mounting hole on the panel.

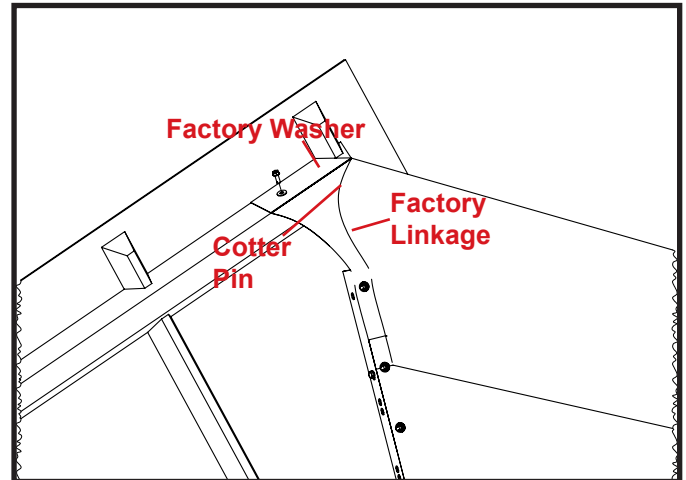


Figure 8

STEP 8:

Repeat Step 1-7 for the Rear Panel Assembly (4).

TANK FULL BIN SENSOR:

Remove tank full bin sensor from the right panel mounting point. Attach Tip-Up Sensor Bracket (6) to the sensor mounting point using 5/16" x 3/4" bolts (12) and 5/16" flange nuts (9) provided. Attach tank full bin sensor to the top of Tip-Up Sensor Bracket.

Repeat on left side if second tank full bin sensor is present.

AUGER DEFLECTOR INSTALLATION



Figure 9

STEP 1:

Remove the bolts and nuts (1) on the front of the auger and the nuts (2) on the left side of the auger. Put aside for future use. See Figure 9.

STEP 2:

Insert Auger Deflector Plate (7) in between the auger brace (3) and support (4) on the front side of the auger. Then reassemble and tighten bolts and nuts (1). See Figure 9

STEP 3:

Attach other end of the Auger Deflector Plate with the nuts (2) and tighten. See Figure 9

STEP 4:

Lower the auger using the open/close cover controls in the cab.

Caution: Carefully monitor the auger to ensure no contact occurs.

STEP 5:

Adjust Auger Deflector in as needed for clearance.

DEMCO

4010 320th St., Boyden, IA. 51234

Phone: (712) 725-2311

Fax: (712) 725-2380

Toll Free: 1-800-54DEMCO (1-800-543-3626)

**Demco warranty policies, operator manuals, and product registration
can be found online:**

www.demco-products.com