



*Doing Our Best to Provide You the Best*

8C010263, Rev. AC  
6-7-2019

## Aero Tarp Lock Out Kit



**OPERATOR MANUAL**

This kit can only be used on model year 2014 and newer trailers with the trailer mounted electric over hydraulic control valve option and the in cab control box.

### Parts List

Qty	Part Number	Description
1	AM9399	Sensor Target Mount
1	AP3805	Wire Clamp
1	AP4558	Tarp Sensor w/ Extension Cord
2	1AFC08FOOOO	3/8"-16 Flange Nut
1	BP3692	3/8"-16 x 1" Flange Bolt, Gr. 8
3	BP3587	1/4"-20 Nylock Nut
3	BP3600	1/4"-20 x 1" Hex Bolt, Grade 8
4	DP4086	11" Cable Tie
4	DP4296	33" Cable Tie

### Tools Required:

- 7/16" Wrenches
- 9/16" Wrenches
- 3/4" Wrenches
- Side Cutters
- Hammer

## Installation

### **STEP 1**

The sensor kit mounts on the front tarp pivot mount. The tarp should be rolled up in its stored position under the curb side g-rail.

Mount the sensor to the road side bottom edge of the tarp pivot mount bracket. Use two of the 1/4" x 1 bolts and 1/4" nylock nuts. Carefully tighten the bolts with hand wrenches to avoid deforming the plastic sensor mount. (Refer to Picture 1)

Picture 1



**STEP 2**

Slip the wire clamp over the loom on the sensor cord and mount the wire clamp to the lower hole on the road side of the tarp pivot mount using the remaining  $\frac{1}{4}$ " x 1 bolt and Nylock nut. (Refer to Pictures 1 & 2)

**Picture 2****STEP 3**

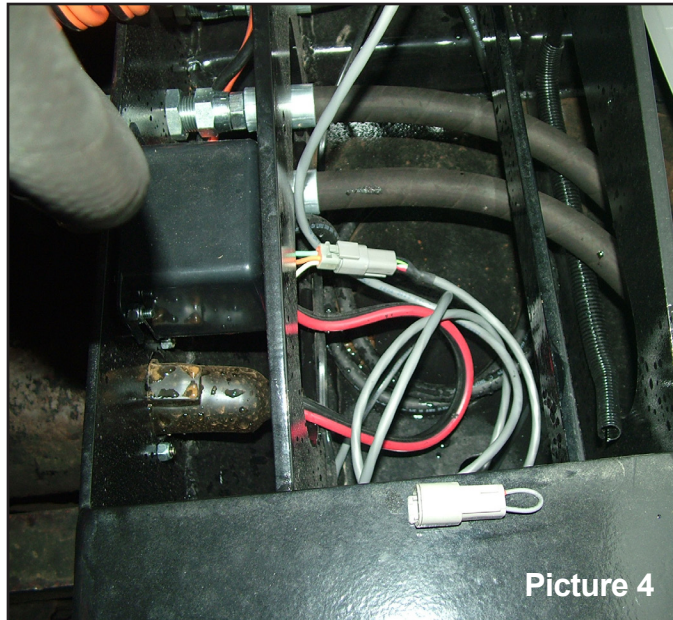
Plug the extension cord into the sensor and route the wire as shown in Pictures 2 & 3. Be sure to put a long enough loop in the wire between the cable tie on the square tube and the cable tie on the top of the cylinder to allow the tub to dump either way and not pull on the cord. (Cut off excess cable tie with a side cutters.)

**Picture 3**



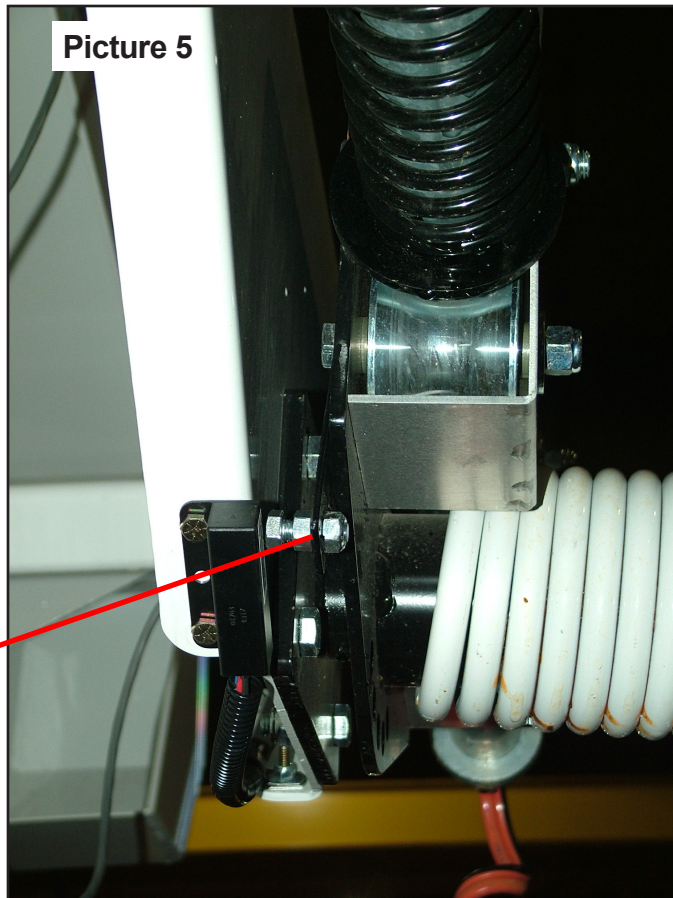
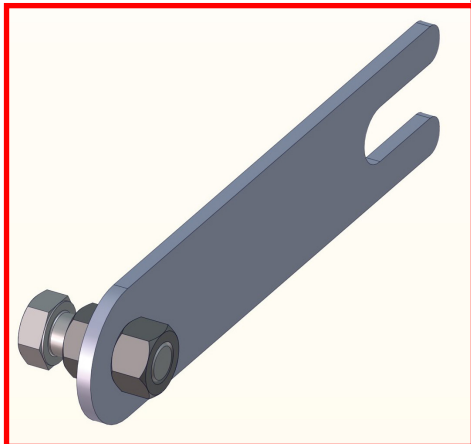
**STEP 4**

Near the tarp motor relay there is a 4 pole plug in the wire harness. Unplug the female connector with the jumper wire out the back and plug the extension cord in its place. (The plug with the jumper wire allows the hydraulic system to operate without the sensor. If you ever need to use the trailer without the sensor, you can plug this jumper back in and the hydraulic valve will dump the trailer regardless of the position of the tarp.) Use the small cable ties to secure the extra cord. (Refer to Picture 4)


**Picture 4**
**STEP 5**

Assemble the 3/8" x 1 bolt and nuts on the sensor target mount as shown in Picture 5. The head of the bolt will be the target for the sensor to "see" to indicate when the tub is uncovered and can be dumped.

The sensor target mount is attached under the head of the road side lower roller bolt. Loosen the nut and tap the bolt out just far enough to slip the slotted end of the mount under the bolt head. Adjust the length and angle of the mount to align the head of the bolt with the sensor zone area of the sensor. Tighten the roller bolt.


**Picture 5**




Picture 6

**STEP 6**

Plug the control box into the trailer and connect the power cord to a 12 volt source.

**NOTE:** If you are not using the cigarette lighter plug that was provided on the power cord, make sure that the **Red** wire is the hot wire and the **Black** wire is ground. If the wires are reversed the sensor will burn out and have to be replaced.

Press the power button and turn on the control box. The **Green** light in the top center of the box will light up when the sensor “sees” the bolt head.

Adjust the length of the bolt so that the head of the bolt is as far away from the sensor as possible and still activate the sensor. The tarp pivot will move slightly fore and aft as it operates so there needs to be as much gap as possible to keep the bolt from contacting the sensor and breaking it.

Cycle the tarp 2 or 3 times to make sure the bolt head will be within range of the sensor if the tarp pivot moves around. Adjust as necessary.

**OPERATION**

Once the sensor is installed, the tub will only dump when the **Green** light is lit. (Refer to Picture 6)

**NOTE:** The **Green** light may turn on before the tarp is completely rolled under the g-rail. The tarp will be rolled far enough to be out of the way of the material being dumped, but the tarp may not be rolled up far enough to miss the trailer fenders if you are dumping to the curb side of the trailer. Visually confirm that the tarp is fully rolled under the g-rail before dumping the tub curb side.

**LOCK OUT OVERRIDE FEATURE**

If the sensor or its cord is damaged or you need to dump the tub with the tarp unrolled for maintenance, the red button in the upper right corner of the control box can be used to override the sensor and allow the tub to dump regardless of the tarp position. The operator will need to press and hold the **Red** button while operating the dump/return switch to move the tub.



4010 320th St., Boyden, IA. 51234

Phone: (712) 725-2311

Fax: (712) 725-2380

Toll Free: 1-800-54DEMCO (1-800-543-3626)

**Demco warranty policies, operator manuals, and product registration  
can be found online:**

**[www.demco-products.com](http://www.demco-products.com)**

