



*Doing Our Best to Provide You the Best*

AG20037, Rev 0  
11/07

---

## POSI-DRIVE INSTALLATION INSTRUCTIONS

### Grain Carts

---



**OPERATOR MANUAL**

## ASSEMBLY INSTRUCTIONS

**NOTE:** For parts breakdown, see page 4.

1. Remove Outer Flighting from Auger Tube.



2. Cut weld between inner bushing and core tube (be careful not to cut into core tube).



3. Drive bushing into core tube a minimum of 4". Clean up inside diameter of core tube.



4. Remove Drive Pin from outside of core tube. (be careful not to cut into core tube)



5. Drill 25/32" Hole through both walls of core tube 2" from end.

6. Weld reinforcement washers (64441) to the outside of the core tube.



7. Insert outer drive casting (12028 for 800-950, 12188 for 550/650/750) into outer flighting and attach using 3/4" x 6" Hex Head Bolt Gr. 8 (10525) and 3/4" Nylon Locknut (02961). Reinstall outer flighting in outer tube.



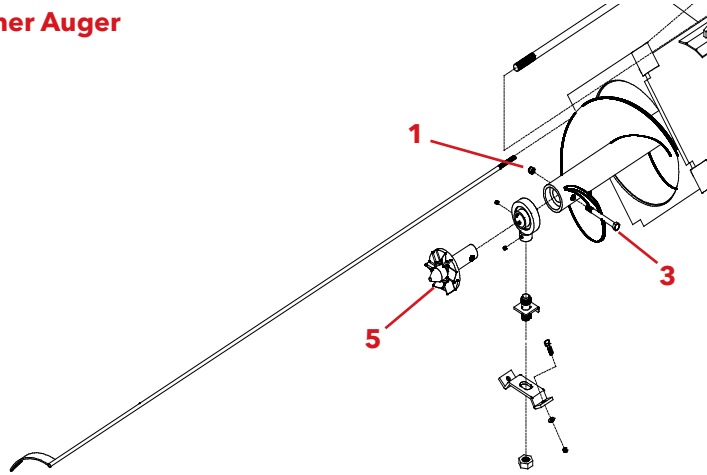
8. Remove old Drive from inner flighting. Remove inner flighting from cart. If inner flighting core tube has 5/8" holes, you will need to drill them out to 25/32". Slide lower Posi-drive into Hanger bearing. Then insert lower Posi-drive into inner flighting and attach using 3/4" x 5" Hex Head Bolt Gr 8 (11099) and 3/4" Nylon locknut (02961). Reinstall inner flighting into cart.

# PARTS LIST

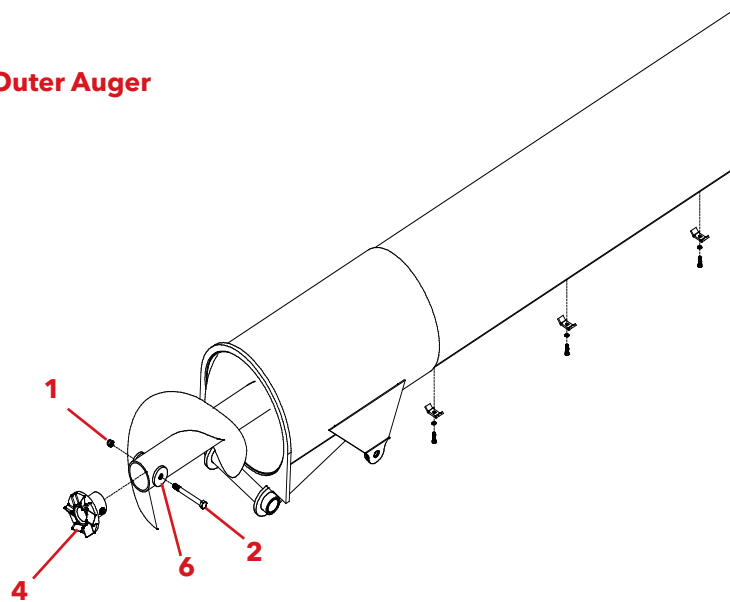
PARTS LIST FOR 550/650/750 GRAIN CART #9440080			
ITEM	PART #	QTY	DESCRIPTION
1	<b>02961</b>	2	LOCKNUT, .75 NC NYLON INSERT
2	<b>10525</b>	1	BOLT, .75 NC X 6" HEX HEAD GR.8
3	<b>11099</b>	1	BOLT, .75 NC X 5" HEX HEAD GR.8
4	<b>12188</b>	1	OUTER DRIVE CASTING
5	<b>12233-30</b>	1	INNER DRIVE CASTING ASSEMBLY
6	<b>64441</b>	2	REINFORCEMENT WASHER .375 THICK, 2" DIAMETER
Please order replacement parts by PART NO. and DESCRIPTION			

PARTS LIST FOR 800/950 GRAIN CART #9440079			
ITEM	PART #	QTY	DESCRIPTION
1	<b>02961</b>	2	LOCKNUT, .75 NC NYLON INSERT
2	<b>10525</b>	1	BOLT, .75 NC X 6" HEX HEAD GR.8
3	<b>11099</b>	1	BOLT, .75 NC X 5" HEX HEAD GR.8
4	<b>12028</b>	1	OUTER DRIVE CASTING
5	<b>12233-30</b>	1	INNER DRIVE CASTING ASSEMBLY
6	<b>64441</b>	2	REINFORCEMENT WASHER .375 THICK, 2" DIAMETER
Please order replacement parts by PART NO. and DESCRIPTION			

## Inner Auger



## Outer Auger



# DEMCO

4010 320th St., Boyden, IA. 51234

Phone: (712) 725-2311

Fax: (712) 725-2380

Toll Free: 1-800-54DEMCO (1-800-543-3626)

**Demco warranty policies, operator manuals, and product registration  
can be found online:**

**[www.demco-products.com](http://www.demco-products.com)**