

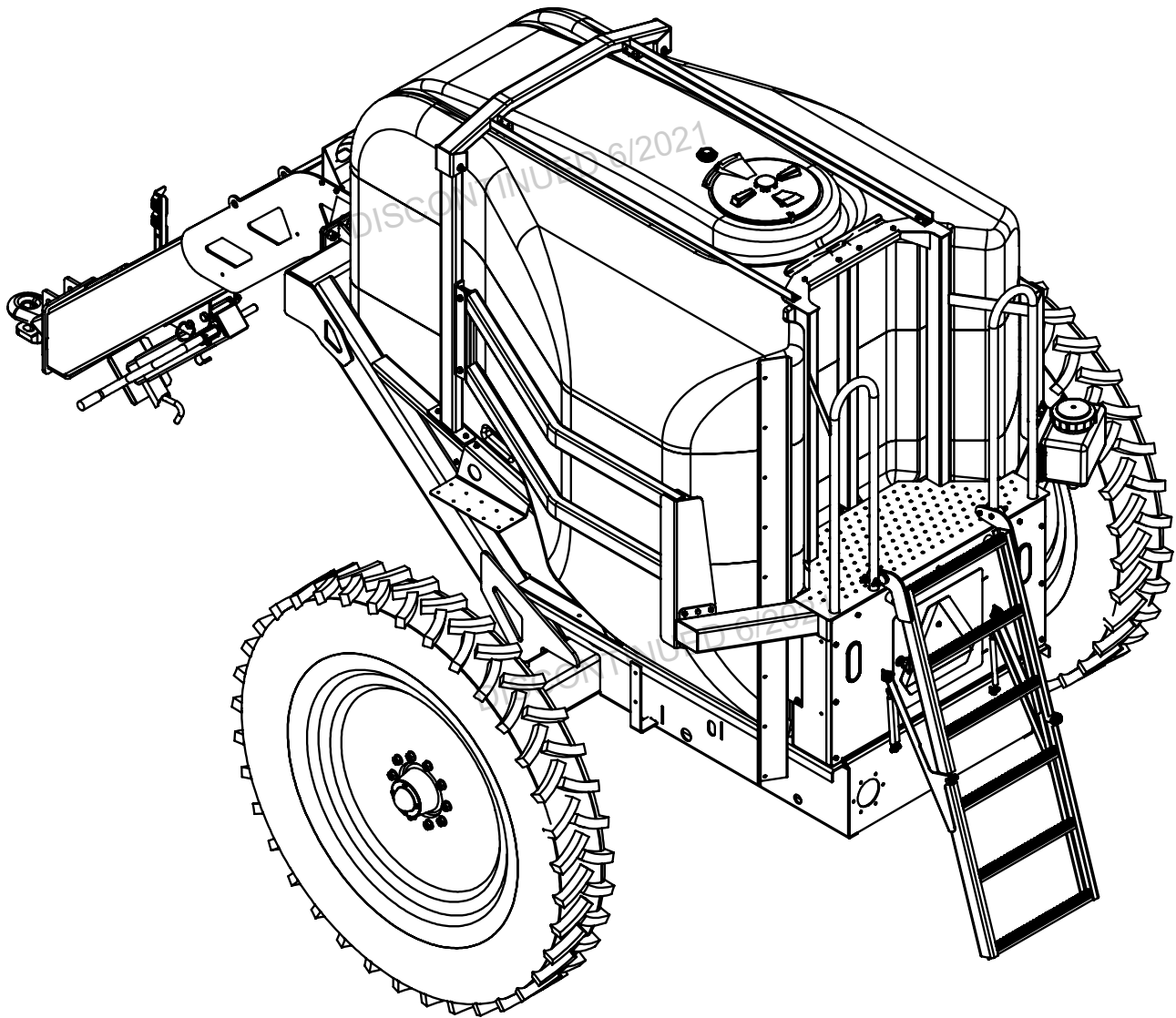


Doing Our Best to Provide You the Best

AF20059, Rev 2
08/18

PULL TYPE APPLICATOR

1050 & 1250 Gallon



OPERATOR MANUAL

INTRODUCTION

Thank you for purchasing a Demco fertilizer applicator. We feel you have made a wise choice and hope you are completely satisfied with your new fertilizer applicator. If you have any questions regarding the applications of certain solutions or chemicals, contact your chemical supplier and follow chemical manufacturer recommendations as well as all licensing and use restrictions or regulations.

WARRANTY POLICY, OPERATOR MANUALS, PARTS MANUALS & REGISTRATION

Go online to www.demco-products.com to review Demco warranty policies, operator manuals and register your Demco product.



WARNING: TO AVOID PERSONAL INJURY OR PROPERTY DAMAGE, OBSERVE FOLLOWING INSTRUCTIONS:

Chemicals are dangerous. Know exactly what you’re going to do and what is going to happen before attempting to work with these products. Improper selection or use can injure people, animals, plants and soil.

Always wear protective clothing such as coveralls, goggles and gloves when working with chemicals or sprayer.

Be sure to dispose of all unused chemicals or solutions in a proper and ecologically sound manner.

GENERAL INFORMATION

1. Unless otherwise specified, high-strength (grade5) (3 radial-line head markings) hex head bolts are used throughout assembly of this piece of equipment.

2. Whenever terms **“LEFT”** and **“RIGHT”** are used in this manual it means from a position behind implement and facing forward.
3. When placing a parts order, refer to this manual for proper part numbers and place order by **PART NO. and DESCRIPTION.**

4. Read assembly instructions carefully. Study assembly procedures and all illustrations before you begin assembly. Note which parts are used in each step. This unit must be assembled in proper sequence or complications will result.

TABLE OF CONTENTS

Introduction

General information.....

Safety Information

Safety Sign Locations.....

Bolt Torque.....

Axle and Frame Parts Breakdown

1050 Parts Breakdown.....

1250 Parts Breakdown.....

60' Toolbar Parts Breakdown

40' Toolbar Parts Breakdown

60' Hydraulics and Operation.....

40' Hydraulics and Operation.....

Plumbing Parts List.....

Nozzle Parts Breakdown

Raven Application Controls

Applicator Calibration Procedures.....

NOTES

Applicator Check List.....

2

2

3-10

4-5

11

12-13

14-15

16-17

18-21

22-25

26-28

29-30

31

32

33

34

35

36

TAKE NOTE! THIS SAFETY ALERT SYMBOL FOUND THROUGHOUT THIS MANUAL IS USED TO CALL YOUR ATTENTION TO INSTRUCTIONS INVOLVING YOUR PERSONAL SAFETY AND SAFETY OF OTHERS. FAILURE TO FOLLOW THESE INSTRUCTIONS CAN RESULT IN INJURY OR DEATH!



THIS SYMBOL MEANS
ATTENTION
BECOME ALERT
YOUR SAFETY IS INVOLVED!

SIGNAL WORDS:

This manual uses the following signal words--**DANGER**, **WARNING**, and **CAUTION**-- with safety messages. The appropriate signal word has been selected using the following guidelines.

DANGER:

Indicates an imminently hazardous situation that, if not avoided, will result in death or serious injury. This signal word is to be limited to most extreme situations typically for machine components which, for functional purposes, cannot be guarded.

WARNING:

Indicates a potentially hazardous situation that, if not avoided, could result in death or serious injury, and includes hazards that are exposed when guards are removed. It may also be used to alert against unsafe practices.

CAUTION:

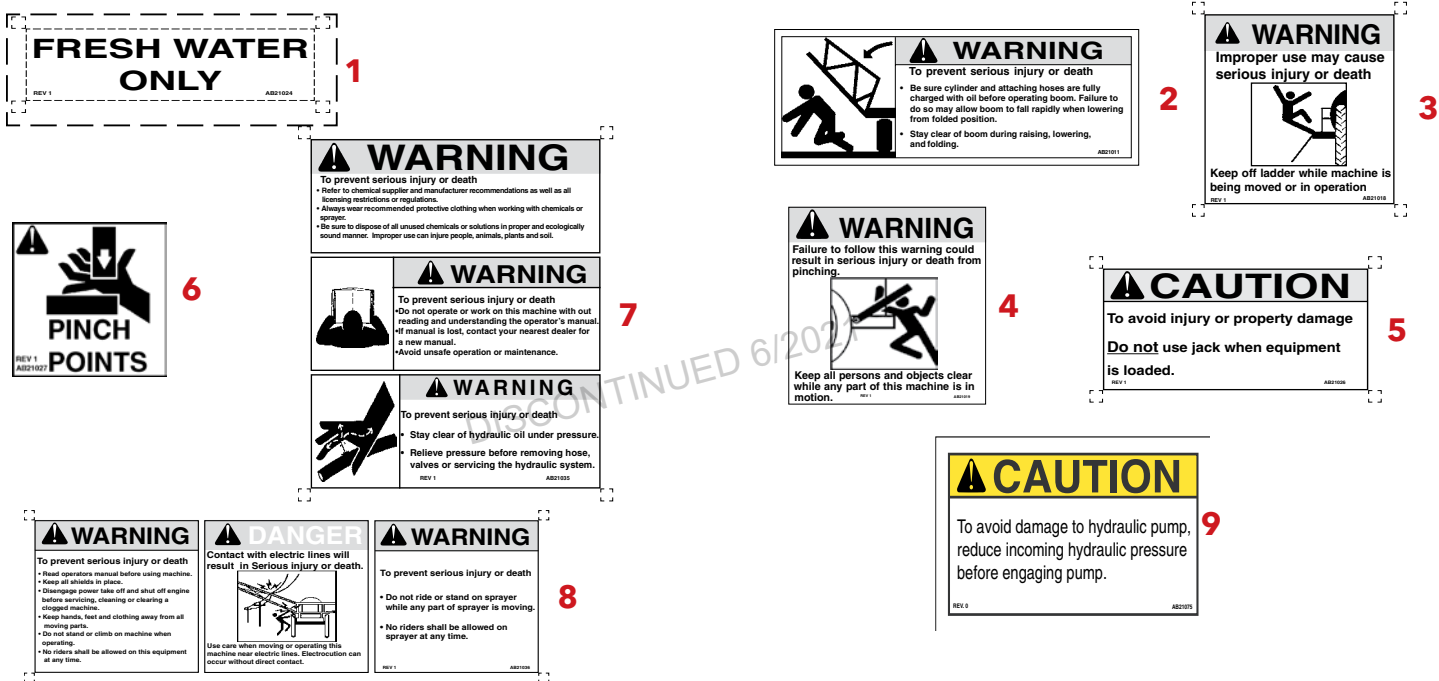
Indicates a potentially hazardous situation that, if not avoided, may result in minor or moderate injury. It may also be used to alert against unsafe practices.

If you have questions not answered in this manual, require additional copies, or if your manual is damaged, please contact your dealer or DEMCO, 4010 320th Street, Boyden, IA 51234
ph: (712) 725-2311 or Toll Free: 1-800-543-3626 Fax: (712) 725-2380 or 1-800-845-6420
<http://www.demco-products.com>



SAFETY SIGN LOCATIONS

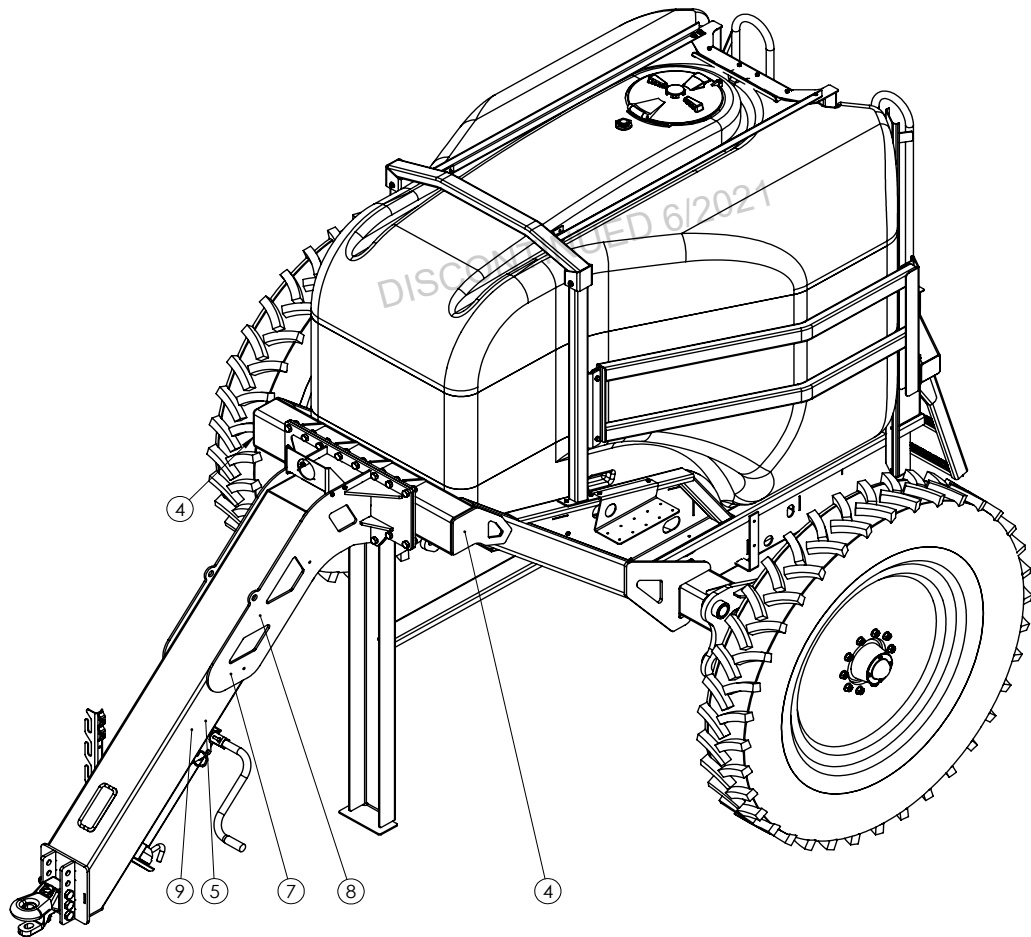
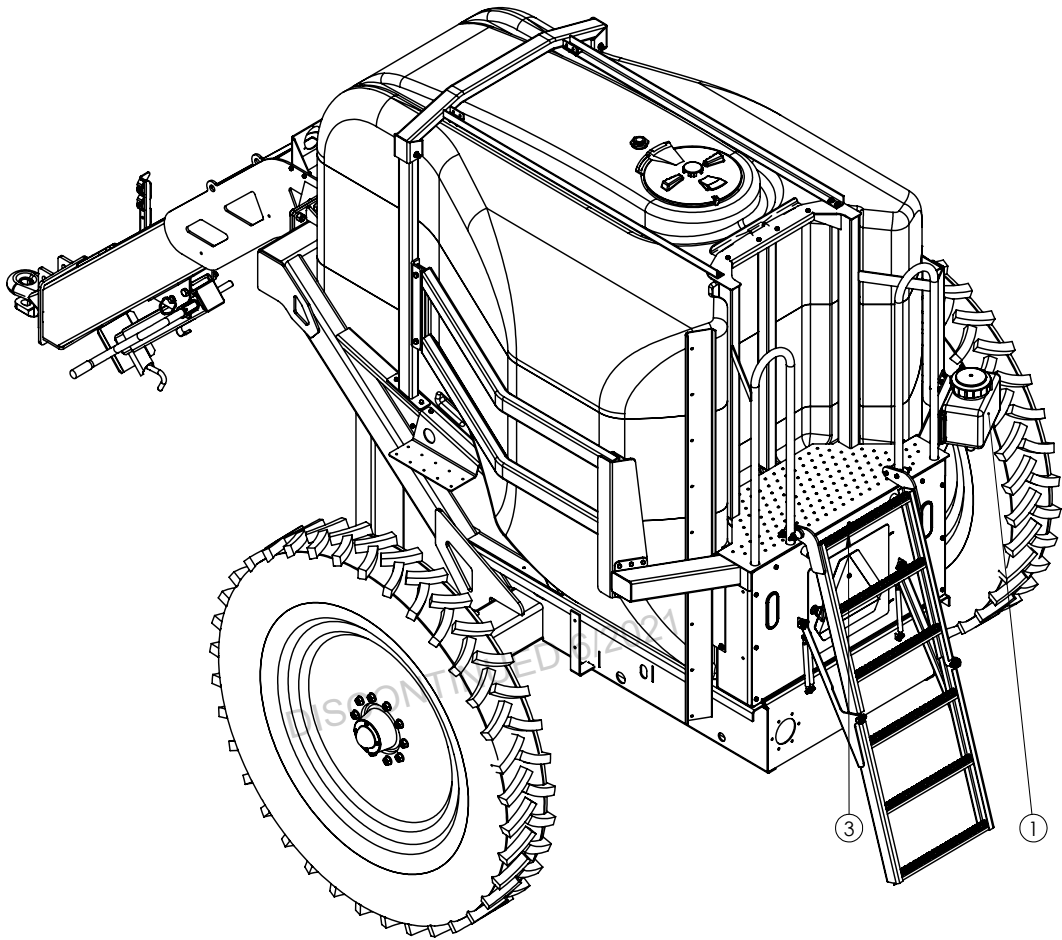
Types of safety sign and locations on equipment are shown in illustration below. Good safety requires that you familiarize yourself with various safety signs, type of warning, and area or particular function related to that area, that requires your SAFETY AWARENESS.



| ITEM | PART # | DESCRIPTION | QTY |
|--------------------------------------------------------------------|----------|----------------------------------------------------|-----|
| 1 | AB21024 | 5" X 1 1/2" FRESH WATER ONLY DECAL | 1 |
| 2 | *AB21011 | 6 3/8" X 2 3/8" WARNING DECAL FOR BOOM | 4 |
| 3 | *AB21018 | 3 7/8" X 3 7/8" WARNING DECAL FOR LADDER | 1 |
| 4 | *AB21019 | 5 7/8" X 5 7/8" WARNING DECAL FOR PINCHING HAZARD | 2 |
| 5 | *AB21026 | 6" X 2 1/2" CAUTION FOR JACK | 1 |
| 6 | AB21027 | PINCH POINT DECAL | # |
| 7 | *AB21035 | 11 7/8" X 3 7/8" THREE PANEL WARNING | 1 |
| 8 | *AB21036 | 6 7/8" X 5 3/4" TWO PANEL WARNING ONE PANEL DANGER | 1 |
| 9 | AB21075 | CAUTION DECAL HYDRAULIC PUMP | 1 |
| Please order replacement parts by PART NO., DESCRIPTION, and COLOR | | | |

* Not sold separately, only available in decal kit #AB21038

QTY on 40' toolbar is 8 and 60' toolbar is 10.





SAFETY...YOU CAN LIVE WITH IT



EQUIPMENT SAFETY GUIDELINES

Every year many accidents occur which could have been avoided by a few seconds of thought and a more careful approach to handling equipment. You, the operator, can avoid many accidents by observing the following precautions in this section. To avoid personal injury, study the following precautions and insist those working with you, or you yourself, follow them.

In order to provide a better view, certain illustrations in this manual may show an assembly with a safety shield removed. However, equipment should never be operated in this condition. Keep all shields in place. If shield removal becomes necessary for repairs, replace the shield prior to use.

Replace any caution, warning, danger or instruction safety decal that is not readable or is missing. Location of such decals is indicated in this booklet.

Do not attempt to operate this equipment under the influence of alcohol or drugs.

Review the safety instructions with all users annually.

Operator should be a responsible adult. DO NOT ALLOW PERSONS TO OPERATE OR ASSEMBLE THIS UNIT UNTIL THEY HAVE DEVELOPED A THOROUGH UNDERSTANDING OF THE SAFETY PRECAUTIONS AND HOW IT WORKS.

To prevent injury or death, use a tractor equipped with a roll over protective system (ROPS). Do not paint over, remove, or deface any safety signs or warning decals on your equipment. Observe all safety signs and practice the instructions on them.

Never exceed the limits of a piece of machinery. If its ability to do a job, or to do so safely is in question- DON'T TRY IT.



LIGHTING AND MARKING

It is the responsibility of the customer to know the lighting and marking requirements of the local highway authorities and to install and maintain the equipment to provide compliance with the regulations. Add extra lights when transporting at night or during periods of limited visibility.

Lighting kits are available from your dealer or from the manufacturer.



SAFETY SIGN CARE

- Keep safety signs clean and legible at all times.
- Replace safety signs that are missing or have become illegible.
- Replaced parts that displayed a safety sign should also display the current sign.
- Safety signs are available from your distributor, dealer parts department, or the factory.

How to install safety signs:

- Be sure that the installation area is clean and dry.
- Decide on the exact position before you remove the backing paper.
- Remove the smallest portion of the split backing paper.
- Align the decal over the specified area and carefully press the small portion with the exposed sticky backing in place.
- Slowly peel back the remaining paper and carefully smooth the remaining portion of the decal into place.
- Small air pockets can be pierced with a pin and smoothed out using the piece of decal backing paper.

**TIRE SAFETY**

- Failure to follow proper procedures when mounting tire on rim can produce an explosion resulting in serious injury or death.
- Do not attempt to mount tire unless you have proper equipment and experience.
- Inflating or servicing tires can be dangerous. Whenever possible, trained personnel should be called to service or mount tires.
- Always order and install tires and wheels with appropriate type and load capacity to meet or exceed anticipated weight to be placed on sprayer.

**BEFORE OPERATION:**

- Carefully study and understand this manual.
- Do not wear loose-fitting clothing which may catch in moving parts.
- Always wear protective clothing and substantial shoes.
- It is recommended that suitable protective hearing and eye protection be worn.
- The operator may come in contact with certain materials which may require specific safety equipment relative to the handling of such materials. (Examples: extremely dusty, molds, fungus, bulk fertilizers, etc.)
- Keep wheel and lug nuts tightened to specified torque.
- Assure that agricultural implement tires are inflated evenly.
- Give the unit a visual inspection for any loose bolts, worn parts, or cracked welds, and make necessary repairs. Follow the maintenance safety instructions included in this manual.
- Be sure there are no tools lying on or in the equipment
- Do not use the unit until you are sure that the area is clear, especially around children and animals.
- Don't hurry the learning process or take the unit for granted. Ease into it and become familiar with your new equipment.
- Practice operation of your equipment and it's attachments. Completely familiarize yourself and other operators with it's operation before using.
- Make sure that the brakes are evenly adjusted (if equipped with brakes)
- Use a tractor equipped with Roll Over Protection System (ROPS) and fasten your seat belt prior to starting the engine.
- The manufacturer does not recommend usage of a tractor with the ROPS removed.
- Move the tractor wheels to the widest recommended settings to increase stability.
- Securely attach to towing unit. Use a high strength, appropriately sized hitch pin with a mechanical retainer and attach a safety chain.
- Do not allow anyone to stand between the tongue or hitch and the towing vehicle when backing up to the equipment.



DURING OPERATION

- **SAFETY CHAIN** -If equipment is going to be transported on a public highway, a safety chain should be obtained and installed. Always follow state and local regulations regarding safety chain and auxiliary lighting when towing farm equipment on a public highway. Be sure to check with local law enforcement agencies for your own particular regulations. Only a safety chain (not an elastic or nylon/plastic tow strap) should be used to retain the connection between the towing and towed machines in the event of separation of the primary attaching system.
- Install the safety chain by crossing the chains under the tongue and secure to the draw bar cage, hitch, or bumper frame.
- Beware of bystanders, **PARTICULARLY CHILDREN!** Always look around to make sure that it is safe to start the engine of the towing vehicle or move the unit. This is particularly important with higher noise levels and quiet cabs, as you may not hear people shouting.
- **NO PASSENGERS ALLOWED**- Do not carry passengers anywhere on or in the tractor or equipment.
- Keep hands and clothing clear of moving parts.
- Do not clean, lubricate, or adjust your equipment while it is moving.
- When halting operation, even periodically, set the tractor or towing vehicle brakes, disengage the PTO, shut off the engine, and **remove the ignition key**.
- Be especially observant of the operating area and terrain- watch for holes, rocks, or other hidden hazards. Always inspect the area prior to operation.
 - DO NOT operate near the edge of drop-offs or banks.
 - DO NOT operate on steep slopes as overturn may result.
 - Operate up and down (not across) intermediate slopes. Avoid sudden starts and stops.
- Pick the levellest possible route when transporting across fields. Avoid the edges of ditches, gullies, and steep hillsides.
- Be extra careful when working on inclines.
- Periodically clear the equipment of brush, twigs, or other materials to prevent buildup of dry combustible materials.
- Maneuver the tractor or towing vehicle at safe speeds.
- Avoid overhead wires or other obstacles. Contact with overhead lines could cause serious injury or death.
- Avoid loose fill, rocks, and holes; they can be dangerous for equipment operation or movement.
- Allow for unit length when making turns.
- Do not walk or work under raised components or attachments unless securely positioned and blocked.
- Keep all bystanders, pets, and livestock clear of the work area.
- Operate the towing vehicle from the operators seat only.
- Never stand alongside of unit with engine running or attempt to start engine and/or operate machine while standing alongside of unit.
- Never leave running equipment attachments unattended.
- As a precaution, always recheck the hardware on equipment following every 100 hours of operation. Correct all problems. Follow the maintenance safety procedures.



FOLLOWING OPERATION

- Following operation, or when unhitching, stop the tractor or towing vehicle, set the brakes, disengage the PTO and all power drives, shut off the engine and **remove the ignition keys**.
- Store the unit in an area away from human activity.
- Do not park equipment where it will be exposed to livestock for long periods of time. Damage and livestock injury could result.
- Do not permit children to play on or around the stored unit.
- Make sure all parked machines are on a hard, level surface and engage all safety devices.
- Wheel chocks may be needed to prevent unit from rolling.



REMEMBER

Your best assurance against accidents is a careful and responsible operator. If there is any portion of this manual or function you do not understand, contact your local authorized dealer or manufacturer.



HIGHWAY AND TRANSPORT OPERATIONS

- Adopt safe driving practices:
 - Keep the brake pedals latched together at all times. **NEVER USE INDEPENDENT BRAKING WITH MACHINE IN TOW, LOSS OF CONTROL AND/OR UPSET OF UNIT CAN RESULT.**
 - Always drive at a safe speed relative to local conditions and ensure that your speed is low enough for an emergency stop to be safe and secure. Keep speed to a minimum.
 - Reduce speed prior to turns to avoid the risk of overturning.
 - Always keep the tractor or towing vehicle in gear to provide engine braking when going downhill. Do not coast.
 - Do not drink and drive!
- Comply with state and local laws governing highway safety and movement of farm machinery on public roads.
- Use approved accessory lighting flags and necessary warning devices to protect operators of other vehicles on the highway during daylight and nighttime transport. Various safety lights and devices are available from your dealer.
- The use of flashing amber lights is acceptable in most localities. However, some localities prohibit their use. Local laws should be checked for all highway lighting and marking requirements.
- When driving the tractor and equipment on the road under 20 mph (40 kph) at night or during the day, use flashing amber warning lights and a slow moving vehicle (SMV) identification emblem.
- Plan your route to avoid heavy traffic.
- Be a safe and courteous driver. Always yield to oncoming traffic in all situations, including narrow bridges, intersections, etc.
- Be observant of bridge loading ratings. Do not cross bridges rated lower than the gross weight at which you are operating.

- Watch for obstructions overhead and to the side while transporting.
- Always operate equipment in a position to provide maximum visibility at all times. Make allowances for increased length and weight of the equipment when making turns, stopping the unit, etc.



PERFORMING MAINTENANCE

- Good maintenance is your responsibility. Poor maintenance is an invitation to trouble.
- Make sure there is plenty of ventilation. Never operate the engine of the towing vehicle in a closed building. The exhaust fumes may cause asphyxiation.
- Before working on this machine, stop the towing vehicle, set the brakes, disengage the PTO and all power drives, shut off the engine and **remove the ignition keys**.
- Be certain all moving parts and attachments have come to a complete stop before attempting to perform maintenance.
- **Always** use a safety support and block wheels. Never use a jack to support the machine.
- Always use the proper tools or equipment for the job at hand.
- Use extreme caution when making adjustments.
- Follow the torque chart in this manual when tightening bolts and nuts.
- Never use your hands to locate a hydraulic leak on attachments. Use a small piece of cardboard or wood. Hydraulic fluid escaping under pressure can penetrate the skin.
- When disconnecting hydraulic lines, shut off hydraulic supply and relieve all hydraulic pressure.
- Openings in the skin and minor cuts are susceptible to infection from hydraulic fluid.
Without immediate medical treatment, serious infection and reactions can occur.
- Replace **all shields** and guards after servicing and before moving.
- After servicing, be sure all tools, parts and service equipment are removed.
- Do not allow grease or oil to build up on any step or platform.
- Never replace hex bolts with less than grade five bolts unless otherwise specified.
- Refer to bolt torque chart for head identification marking.
- Where replacement parts are necessary for periodic maintenance and servicing, genuine factory replacement parts must be used to restore your equipment to original specifications. The Manufacturer will not claim responsibility for use of unapproved parts and/or accessories and other damages as a result of their use.
- If equipment has been altered in any way from original design, the manufacturer does not accept any liability for injury or warranty.
- A fire extinguisher and first aid kit should be kept readily accessible while performing maintenance on this equipment.



TORQUE SPECIFICATION

Torque figures indicated are valid for non-greased or non-oiled threads and heads unless otherwise specified. Therefore, do not grease or oil bolts or capscrews unless otherwise specified in this manual. When using locking elements, increase torque values by 5%.

* GRADE or CLASS value for bolts and capscrews are identified by their head markings.

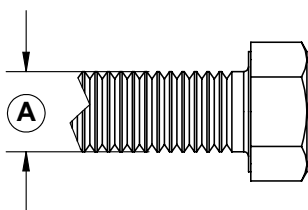
BOLT TORQUE DATA FOR STANDARD NUTS, BOLTS, AND CAPSCREWS.

Tighten all bolts to torques specified in chart unless otherwise noted. Check tightness of bolts periodically, using bolt chart as guide. Replace hardware with same grade bolt.

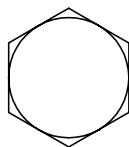
NOTE: Unless otherwise specified, high-strength Grade 5 hex bolts are used throughout assembly of equipment.

| Bolt Torque for Standard bolts * | | | | | | |
|----------------------------------|---------|-------|---------|-------|---------|--------|
| "A" | GRADE 2 | | GRADE 5 | | GRADE 8 | |
| | lb-ft | (N.m) | lb-ft | (N.m) | lb-ft | (N.m) |
| 1/4" | 6 | (8) | 9 | (12) | 12 | (16) |
| 5/16" | 10 | (13) | 18 | (25) | 25 | (35) |
| 3/8" | 20 | (27) | 30 | (40) | 45 | (60) |
| 7/16" | 30 | (40) | 50 | (70) | 80 | (110) |
| 1/2" | 45 | (60) | 75 | (100) | 115 | (155) |
| 9/16" | 70 | (95) | 115 | (155) | 165 | (220) |
| 5/8" | 95 | (130) | 150 | (200) | 225 | (300) |
| 3/4" | 165 | (225) | 290 | (390) | 400 | (540) |
| 7/8" | 170 | (230) | 420 | (570) | 650 | (880) |
| 1" | 225 | (300) | 630 | (850) | 970 | (1310) |

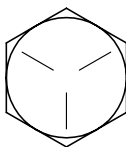
| Bolt Torque for Metric bolts * | | | | | | |
|--------------------------------|-----------|-------|-----------|-------|------------|--------|
| "A" | CLASS 8.8 | | CLASS 9.8 | | CLASS 10.9 | |
| | lb-ft | (N.m) | lb-ft | (N.m) | lb-ft | (N.m) |
| 6 | 9 | (13) | 10 | (14) | 13 | (17) |
| 7 | 15 | (21) | 18 | (24) | 21 | (29) |
| 8 | 23 | (31) | 25 | (34) | 31 | (42) |
| 10 | 45 | (61) | 50 | (68) | 61 | (83) |
| 12 | 78 | (106) | 88 | (118) | 106 | (144) |
| 14 | 125 | (169) | 140 | (189) | 170 | (230) |
| 16 | 194 | (263) | 216 | (293) | 263 | (357) |
| 18 | 268 | (363) | -- | -- | 364 | (493) |
| 20 | 378 | (513) | -- | -- | 515 | (689) |
| 22 | 516 | (699) | -- | -- | 702 | (952) |
| 24 | 654 | (886) | -- | -- | 890 | (1206) |



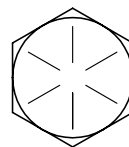
GRADE-2



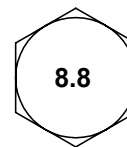
GRADE-5



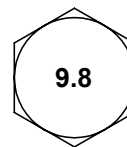
GRADE-8



CLASS 8.8



CLASS 9.8



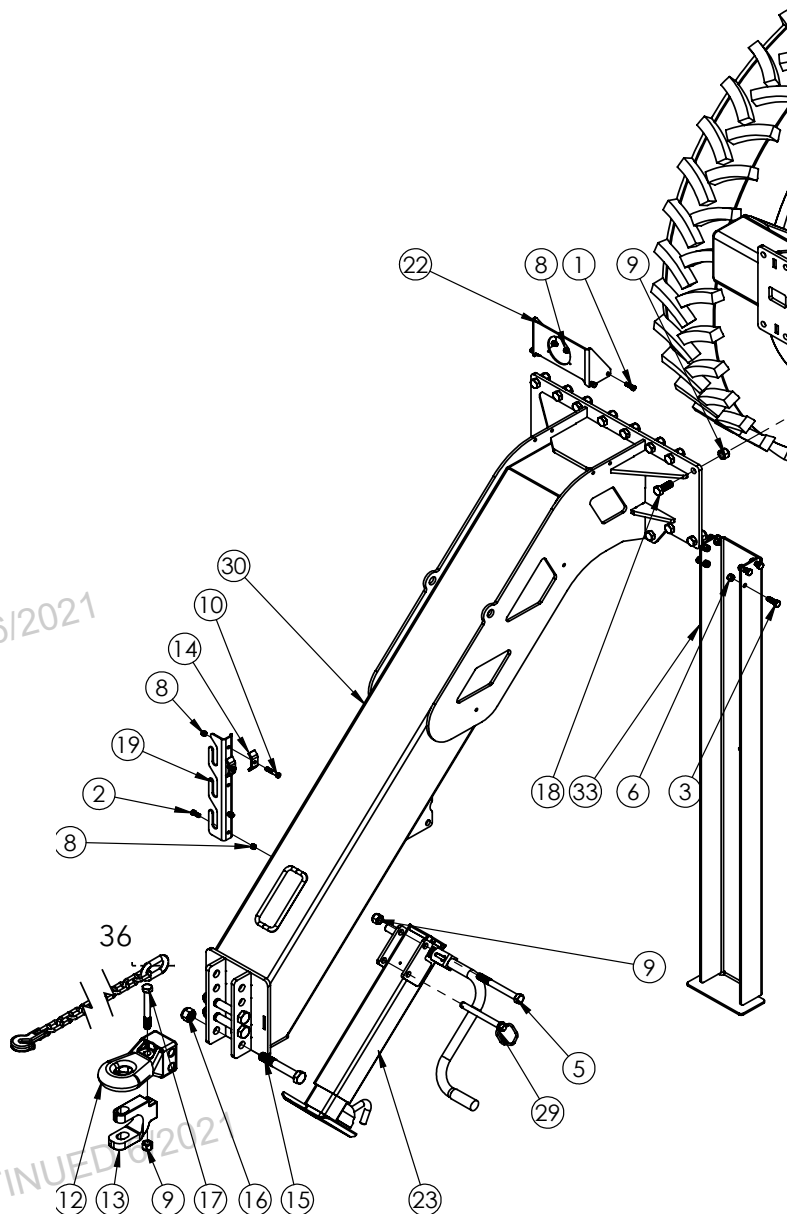
CLASS 10.9



AXLE AND FRAME PARTS BREAKDOWN

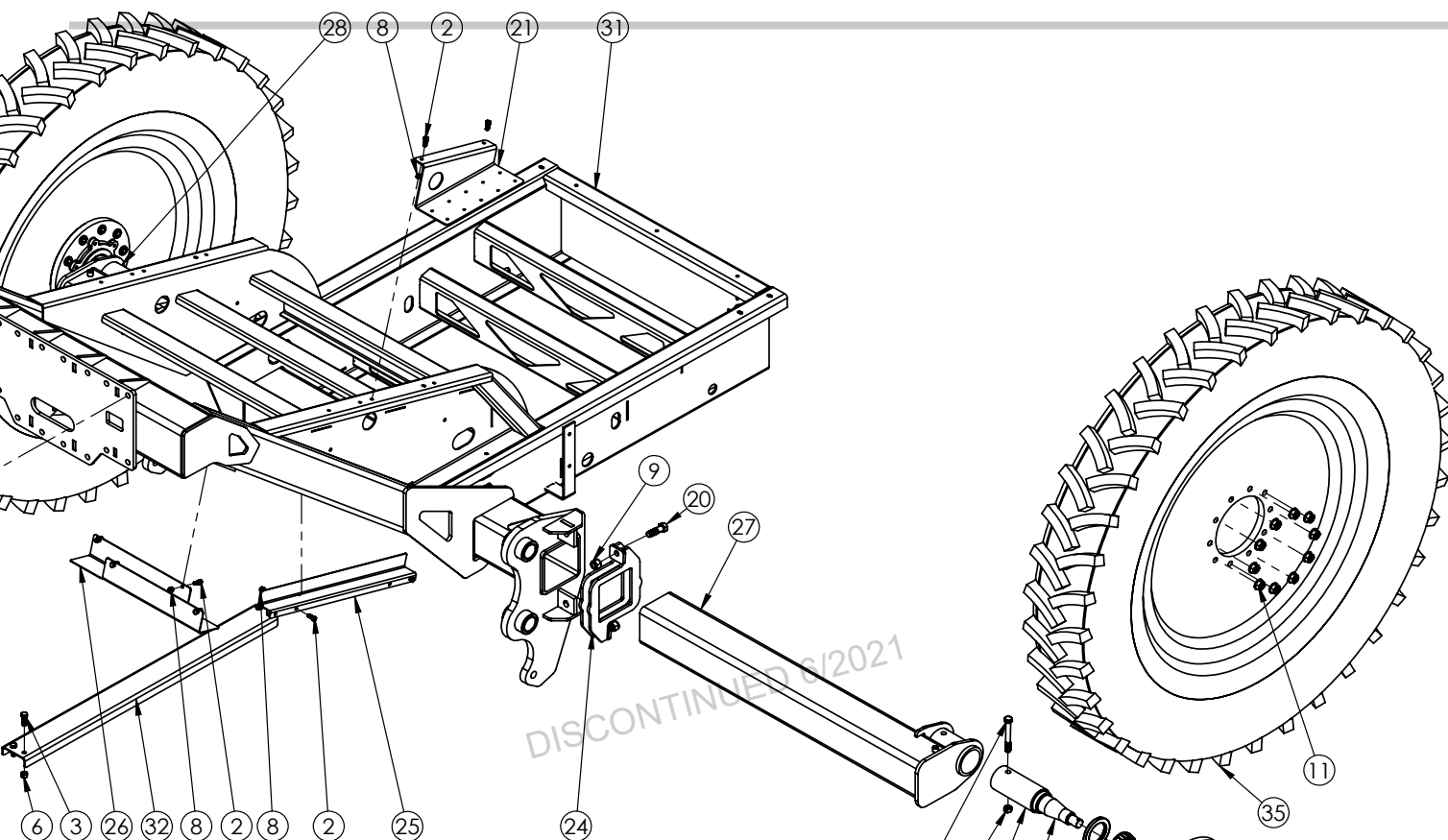
| ITEM | PART # | DESCRIPTION | QTY. |
|------|----------|-------------------------------------|------|
| 1 | 00523 | BOLT, .375NC X 1.25 HEX HEAD GR. 5 | 4 |
| 2 | 00907 | BOLT, .375NC X 1.00 HEX HEAD GR.5 | 10 |
| 3 | 01254 | BOLT, .50NC X 1.50 HEX HEAD GR. 5 | 10 |
| 4 | 01336 | BOLT, .625NC X 5.00 HEX HEAD GR.5 | 2 |
| 5 | 01964 | BOLT, .75NC X 7.00 HEX HEAD GR.5 | 1 |
| 6 | 02178 | NUT, .50NC NYLON LOCK HEX | 10 |
| 7 | 02587 | NUT, .625NC NYLON LOCK HEX | 2 |
| 8 | 02592 | NUT, .375NC NYLON LOCK HEX | 16 |
| 9 | 02961 | NUT, .75NC NYLON LOCK HEX | 22 |
| 10 | 04226 | BOLT, .375NC X 2.00 HEX HEAD GR.5 | 2 |
| 11 | 07435 | 3/4" UNF WHEEL NUT F/ 10 BOLT HUB | 20 |
| - | 10971 | 5/8" UNF WHEEL NUT F/ 8 BOLT HUB | 16 |
| 12 | 09163-30 | CATEGORY IV FORGED HITCH BASE | 1 |
| 13 | 09164-30 | 1-1/4" CLEVIS INSERT | 1 |
| 14 | 09218-95 | HOSE KEEPER, 2 HOSE | 2 |
| 15 | 09454 | BOLT, 1.0NF X 6.50 HEX HEAD GR.8 | 3 |
| 16 | 09455 | NUT, 1.0NF NYLON LOCK HEX | 3 |
| 17 | 10525 | BOLT, .75NC X 6.00 HEX HEAD GR.8 | 1 |
| 18 | 11097 | BOLT, .75NC X 2.00 HEX HEAD GR.8 | 16 |
| 19 | 12820-76 | HOSE HOLDER | 1 |
| 20 | 14700 | BOLT, .75NC X 2.50 HEX HEAD GR.8 | 4 |
| 21 | 15647-76 | TRAILER VALVE MOUNT | 1 |
| 22 | 15648-? | GAUGE HOLDER | 1 |
| 23 | 15657-30 | TOOLBAR JACK | 1 |
| 24 | 15658-76 | 6 X 6 AXLE CLAMP F/ TOOLBAR | 2 |
| 25 | 15661-? | HOSE COVER | 1 |
| 26 | 15662-? | HOSE HOLDER | 1 |
| 27 | 15663-76 | LEFT AXLE INSERT FOR 120 SP 46" WL | 1 |
| - | 15665-76 | LEFT AXLE INSERT FOR 120 SP 38" WL | - |
| 28 | 15664-76 | RIGHT AXLE INSERT FOR 120 SP 46" WL | 1 |
| - | 15666-76 | RIGHT AXLE INSERT FOR 120 SP 38" WL | - |
| 29 | 15671 | HITCH PIN .75 X 6.25 | 1 |
| 30 | 15679-? | TOOLBAR BOLT ON TONGUE | 1 |
| 31 | 15680-? | TOOLBAR TANK FRAME | 1 |
| 32 | 15714-76 | TRANSPORT LEG SUPPORT | 1 |
| 33 | 15715-76 | TRANSPORT LED STAND | 1 |
| 34 | 5892-30 | 10 BOLT HUB / SPINDLE | 2 |
| - | 5891-30 | 8 BOLT HUB / SPINDLE | - |
| 35 | 09605-15 | WHEEL 46" X 10, 10 BOLT YLW | 2 |
| - | 09605-60 | WHEEL 46" X 10, 10 BOLT CHR | - |
| - | 07481-15 | WHEEL 38" X 12, 8 BOLT YLW | - |
| - | 07481-60 | WHEEL 38" X 12, 8 BOLT CHR | - |
| 36 | 12154 | SAFETY CHAIN | 1 |

Please order replacement parts by PART NO., DESCRIPTION, and COLOR



8 Bolt Hub Part Breakdown

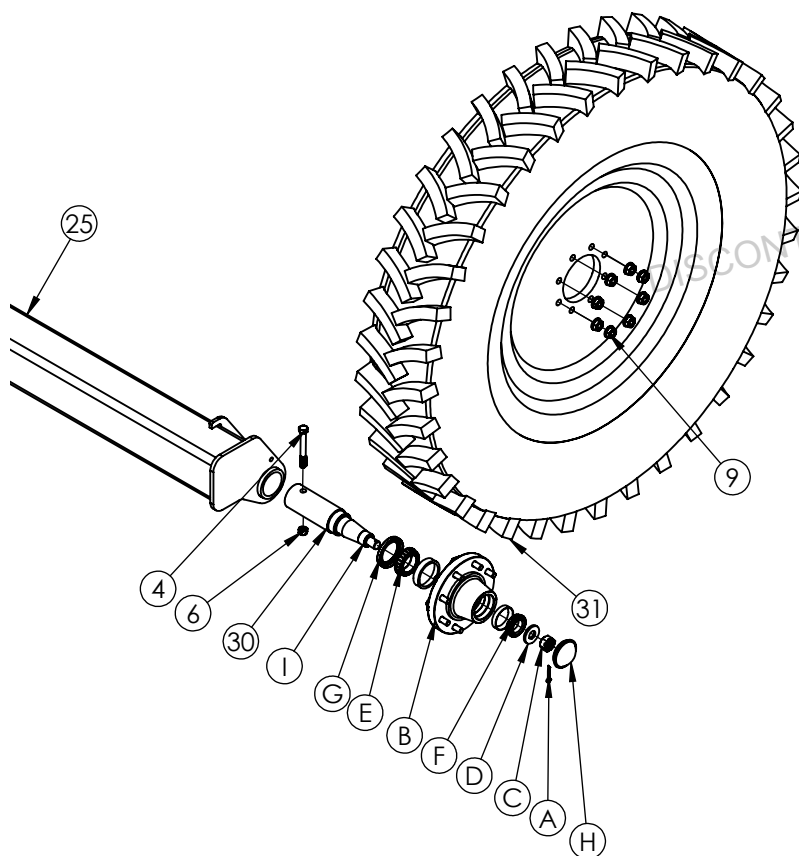
| ITEM | PART # | DESCRIPTION | QTY |
|------|---------|-----------------------------|-----|
| 34 | 5891-30 | 8-Bolt Hub / Spindle | 2 |
| A | 00191 | 3/16" X 1-1/2" Cotter Pin | 1 |
| B | 01941 | Hub F/ 450 & 550 Gear | 1 |
| B* | 01943 | Inner Cup | 1 |
| B* | 01938 | Outer Cup | 1 |
| B* | 10151 | Stub Bolt 5/8" UNF | 8 |
| C | 01934 | Nut 1.00nf Hex Slotted | 1 |
| D | 01936 | Running Gear Spindle Washer | 1 |
| E | 01942 | Inner Cone Bearing | 1 |
| F | 01937 | Outer Cone Bearing | 1 |
| G | 01944 | Seal Oil F/ 808 & 680 Hub | 1 |
| H | 01933 | Hub Cap F/ 608 & 808 Hubs | 1 |
| I | 12814 | Spindle F/ 8-Bolt | 1 |



10 BOLT HUB ASSEMBLY AND AXLE

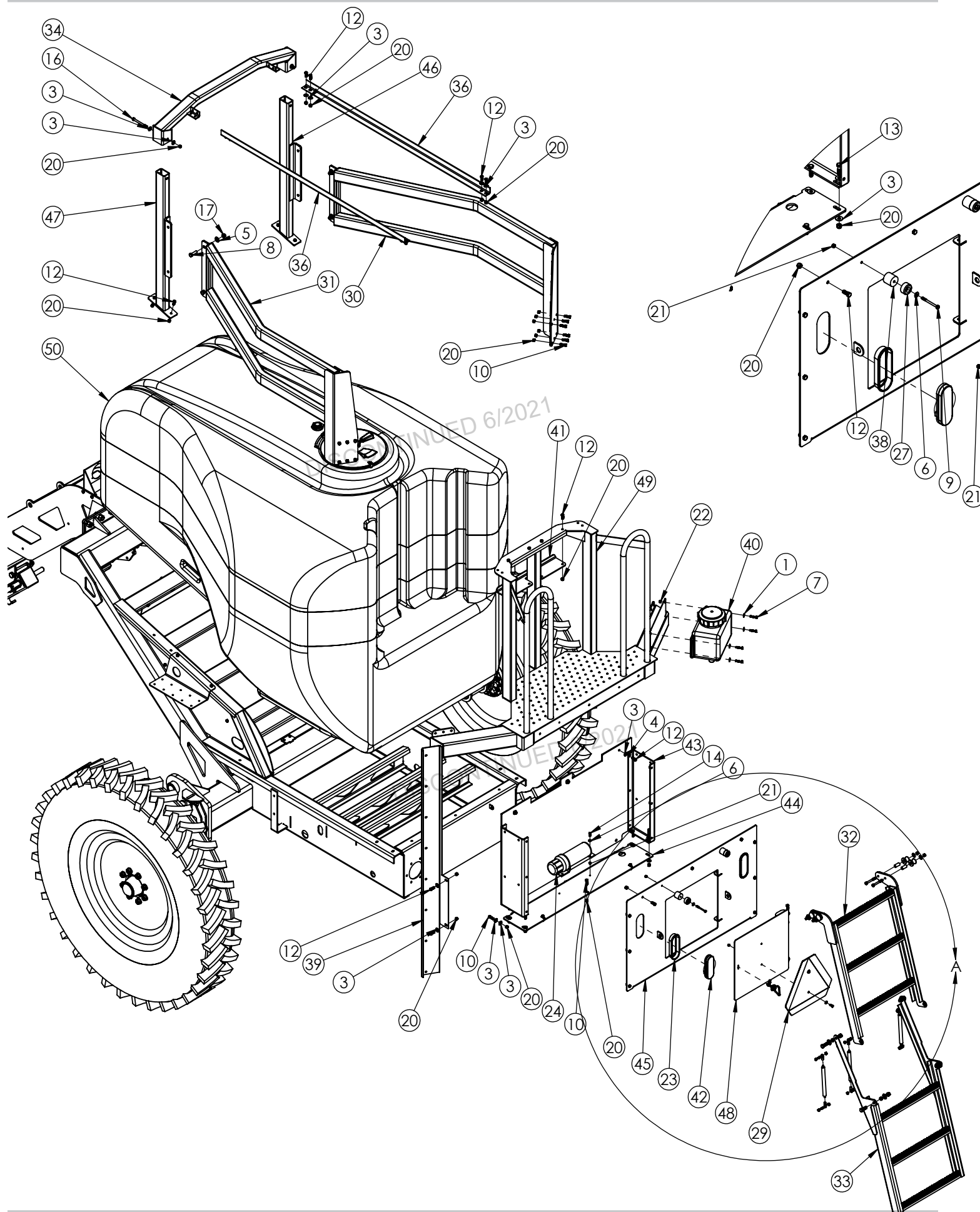
10 Bolt Hub Part Breakdown

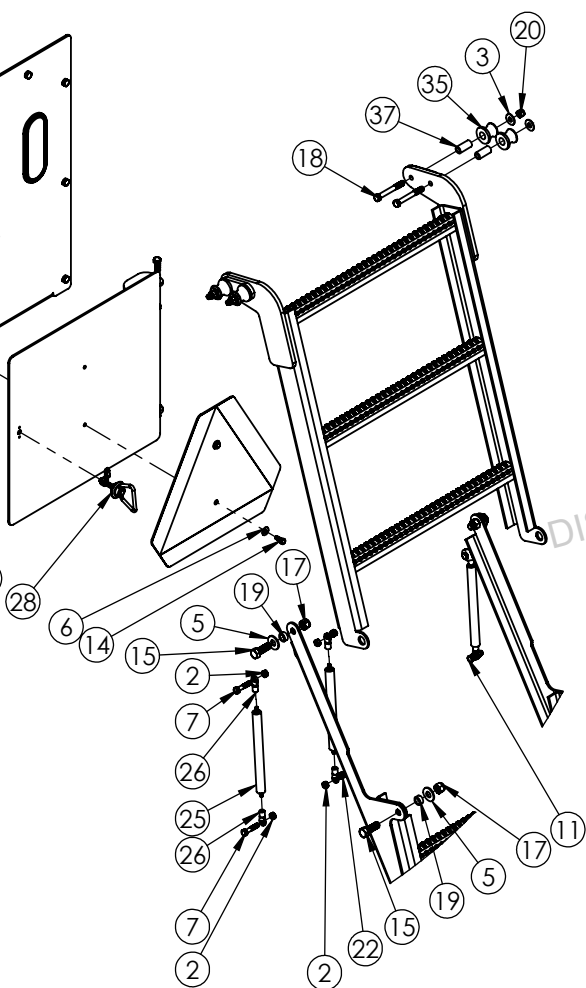
| ITEM | PART # | DESCRIPTION | QTY |
|------|--------|------------------------------|-----|
| 34 | 5892 | 10-Bolt Hub / Spindle | 2 |
| A | 04305 | H bolt 0.3125-18x0.5 | 4 |
| B | 05088 | Cotter Pin, 1/8 X 2 1/2 | 1 |
| C | 07351 | Hub F/ 650 & 750 Gear | 1 |
| C* | 07359 | Inner Cup | 1 |
| C* | 07360 | Outer Cup | 1 |
| C* | 07861 | Stud Bolt 3/4" UNF | 10 |
| D | 07353 | Nut 1.25nf Castle | 1 |
| E | 07354 | Washer 3.00 O.D. X 1.32 I.D. | 1 |
| F | 07357 | Inner Cone Bearing | 1 |
| G | 07358 | Outer Cone Bearing | 1 |
| H | 07361 | Oil Seal | 1 |
| I | 07362 | Hub Cap | 1 |
| J | 09532 | Hub Cap Gasket | 1 |
| K | 12815 | Spindle F/ 10-Bolt | 1 |



8 BOLT HUB ASSEMBLY AND AXLE

1050 PARTS BREAKDOWN





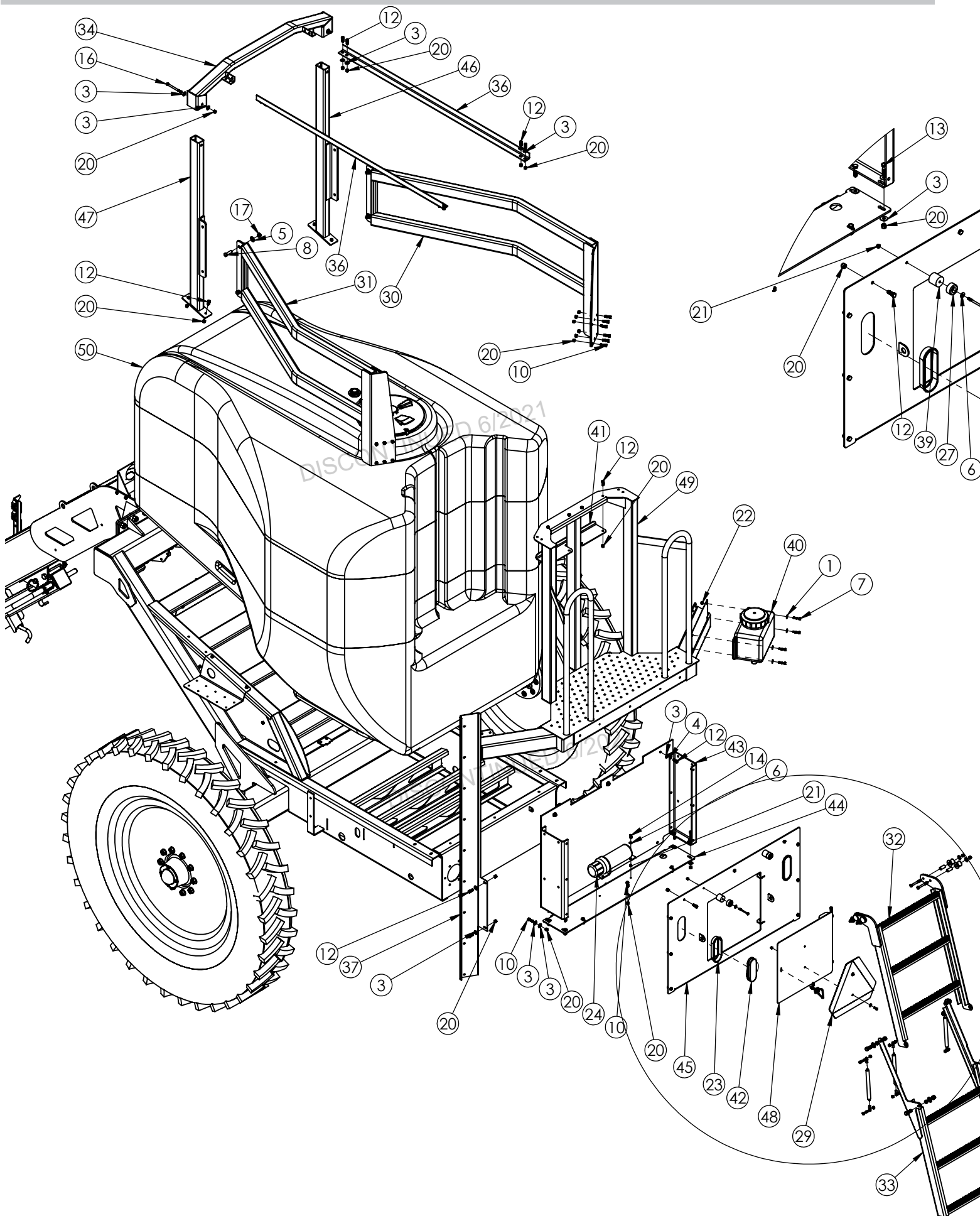
DETAIL A

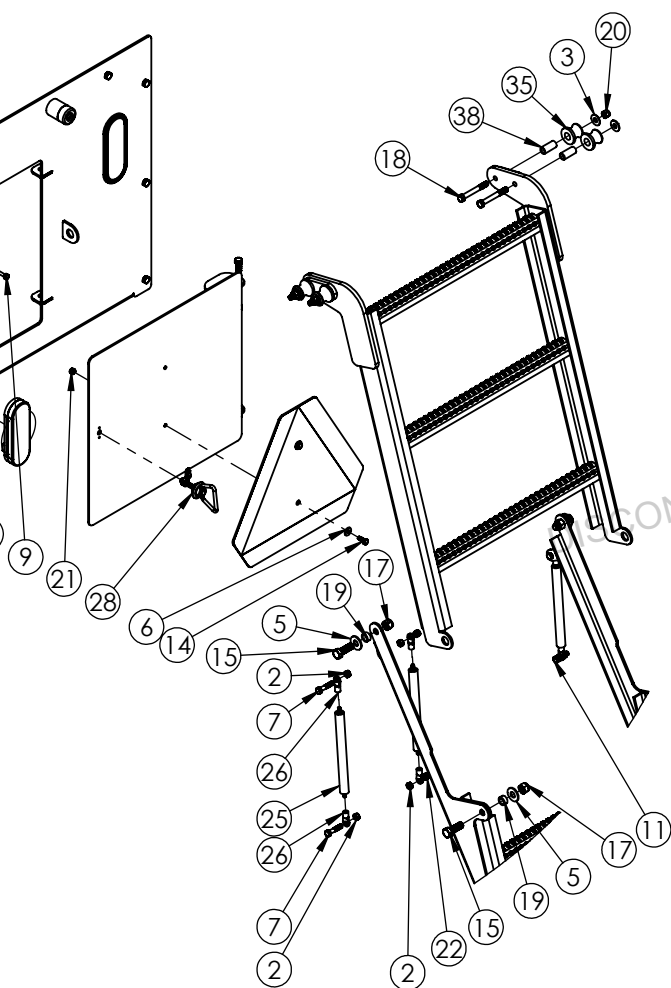
Amber light goes to the top
Red light must face the rear
Connect Yellow wire to left light
Connect Green wire to right light

| | | | |
|--------------------------------------------------------------------|-----------------|------------------------------------|---|
| 44 | 15640-? | BOX BASE | 1 |
| 45 | 15641-? | BACK COVER | 1 |
| 46 | 15645-76 | RIGHT SIDE SUPPORT 1050 | 1 |
| 47 | 15646-76 | LEFT SIDE SUPPORT 1050 | 1 |
| 48 | 15649-? | TOOLBOX DOOR | 1 |
| 49 | 15653-76 | 1050 TOOLBAR TRAILER PLATFORM | 1 |
| 50 | 15669 | TANK POLY 1050 GAL TANK W/FTGS CHR | 1 |
| - | 15670 | TANK POLY 1050 GAL TANK W/FTGS YLW | - |
| Please order replacement parts by PART NO., DESCRIPTION, and COLOR | | | |

| ITEM | PART # | DESCRIPTION | QTY |
|--------------------------------------------------------------------|-----------------|------------------------------------|-----|
| 1 | 00004 | WASHER, FLAT, .313 | 4 |
| 2 | 00007 | NUT, .313NC HEX | 6 |
| 3 | 00059 | WASHER, FLAT .375 | 35 |
| 4 | 00060 | WASHER, LOCK .375 | 3 |
| 5 | 00085 | WASHER, FLAT .50 | 8 |
| 6 | 00214 | WASHER, FLAT .25 | 6 |
| 7 | 00372 | BOLT, .313NC X 1.50 HEX HEAD GR.5 | 6 |
| 8 | 00482 | BOLT, .50NC X 1.75 HEX HEAD GR.5 | 4 |
| 9 | 00485 | BOLT, .25NC X 3.00 HEX HEAD GR.5 | 2 |
| 10 | 00523 | BOLT, .375NC X 1.25 HEX HEAD GR. 5 | 18 |
| 11 | 00685 | BOLT, .313NC X 1.25 HEX HEAD GR.5 | 2 |
| 12 | 00907 | BOLT, .375NC X 1.00 HEX HEAD GR.5 | 32 |
| 13 | 00914 | BOLT, .375NC X 1.50 HEX HEAD GR.5 | 4 |
| 14 | 01076 | BOLT, .25NC X .75 HEX HEAD GR.5 | 4 |
| 15 | 01254 | BOLT, .50NC X 1.50 HEX HEAD GR.5 | 4 |
| 16 | 01256 | BOLT, .375NC X 4.50 HEX HEAD GR.5 | 2 |
| 17 | 02178 | NUT, .50NC NYLON LOCK HEX | 8 |
| 18 | 02207 | BOLT, .375NC X 3.00 HEX HEAD GR.5 | 4 |
| 19 | 02579-95 | BUSHING, SPACER PIVOT | 4 |
| 20 | 02592 | NUT, .375NC NYLON LOCK HEX | 57 |
| 21 | 02772 | NUT, .25NC NYLON LOCK HEX | 6 |
| 22 | 02802 | NUT, .313NC NYLON LOCK HEX | 8 |
| 23 | 03652 | GROMMET RUBBER OVAL | 2 |
| 24 | 10241 | CANISTER | 1 |
| 25 | 11031 | GAS STRUT | 3 |
| 26 | 11032 | SHOCK ROD END | 6 |
| 27 | 11867 | RUBBER BUMPER | 2 |
| 28 | 11872 | DOOR LATCH | 1 |
| 29 | 12126 | SMV SIGN | 1 |
| 30 | 12723-76 | SIDE TANK BRACE LEFT | 1 |
| 31 | 12724-76 | SIDE TANK BRACE RIGHT | 1 |
| 32 | 12733-76 | UPPER LADDER | 1 |
| 33 | 12734-76 | LOWER LADDER | 1 |
| 34 | 12746-76 | BOOM MOUNT CAP | 1 |
| 35 | 12747 | LADDER ROLLER | 4 |
| 36 | 12784-76 | TOP ANGLE | 2 |
| 37 | 12811-95 | LADDER BUSHING | 4 |
| 38 | 12812 | BUMPER SPACER | 2 |
| 39 | 14610-76 | 1050 GALLON MARKER BRACKET | 1 |
| 40 | 14616 | EYE WASH TANK WITH LID CHR | 1 |
| - | 12793 | EYE WASH TANK WITH LID YLW | - |
| - | PL5A | LID F/ EYE WASH TANK | - |
| 41 | 14680-76 | PLATFORM SPACER PLATE | 1 |
| 42 | 14923 | LED LIGHT, SEALED RED LAMP | 2 |
| 43 | 15639-? | STAND BASE | 1 |
| Please order replacement parts by PART NO., DESCRIPTION, and COLOR | | | |

1250 PARTS BREAKDOWN





DETAIL A

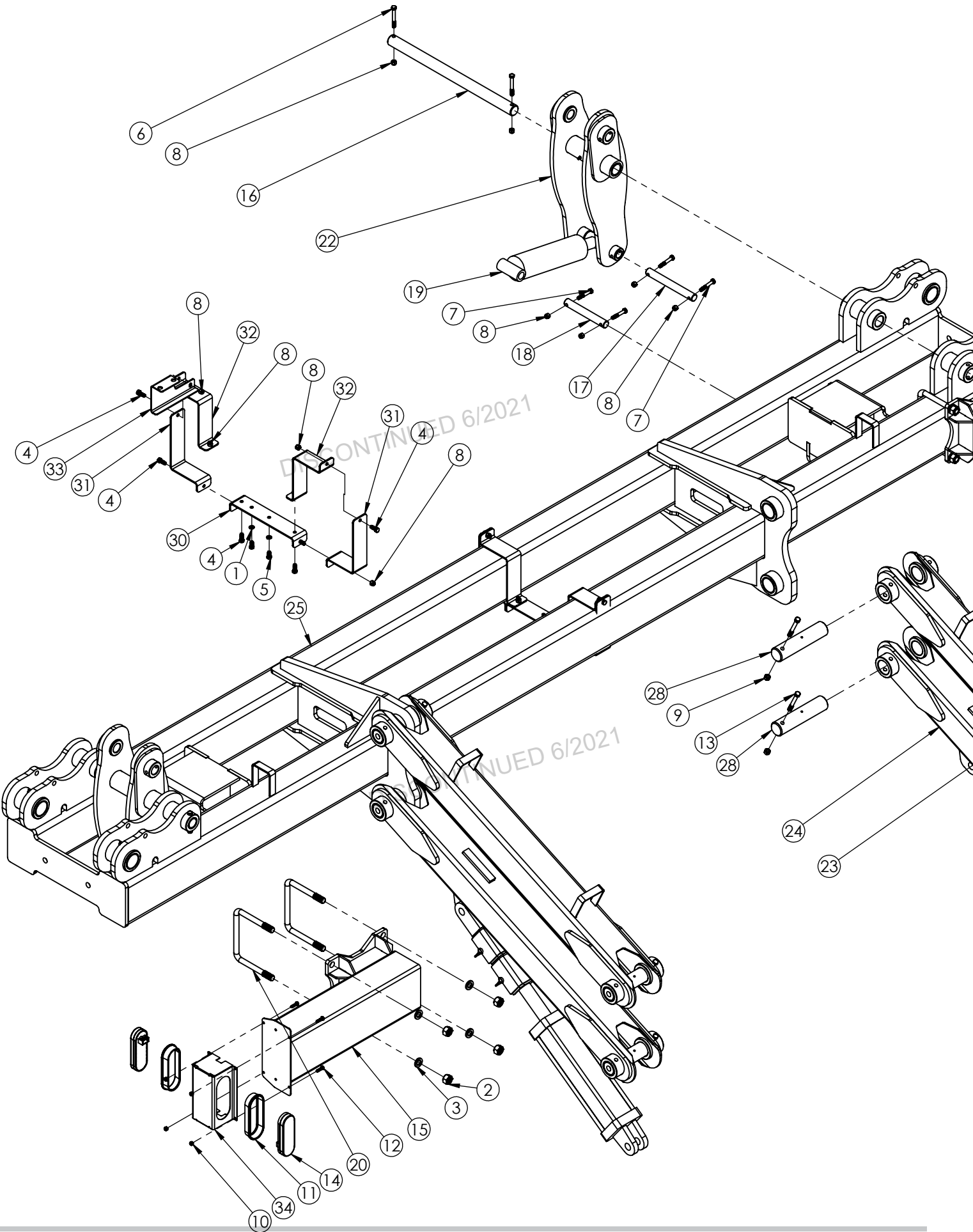
| | | | |
|----|-----------------|------------------------------------|---|
| 41 | 14680-76 | PLATFORM SPACER PLATE | 1 |
| 42 | 14923 | LED LIGHT, SEALED RED LAMP | 2 |
| 43 | 15639-? | STAND BASE | 1 |
| 44 | 15640-? | BOX BASE | 1 |
| 45 | 15641-? | BACK COVER | 1 |
| 46 | 15643-76 | RIGHT SIDE SUPPORT | 1 |
| 47 | 15644-76 | LEFT SIDE SUPPORT | 1 |
| 48 | 15649-? | TOOLBOX DOOR | 1 |
| 49 | 15652-76 | 1250 TOOLBAR TRAILER PLATFORM | 1 |
| 50 | 15667 | TANK POLY 1250 GAL TANK W/FTGS CHR | 1 |
| - | 15668 | TANK POLY 1250 GAL TANK W/FTGS YLW | - |

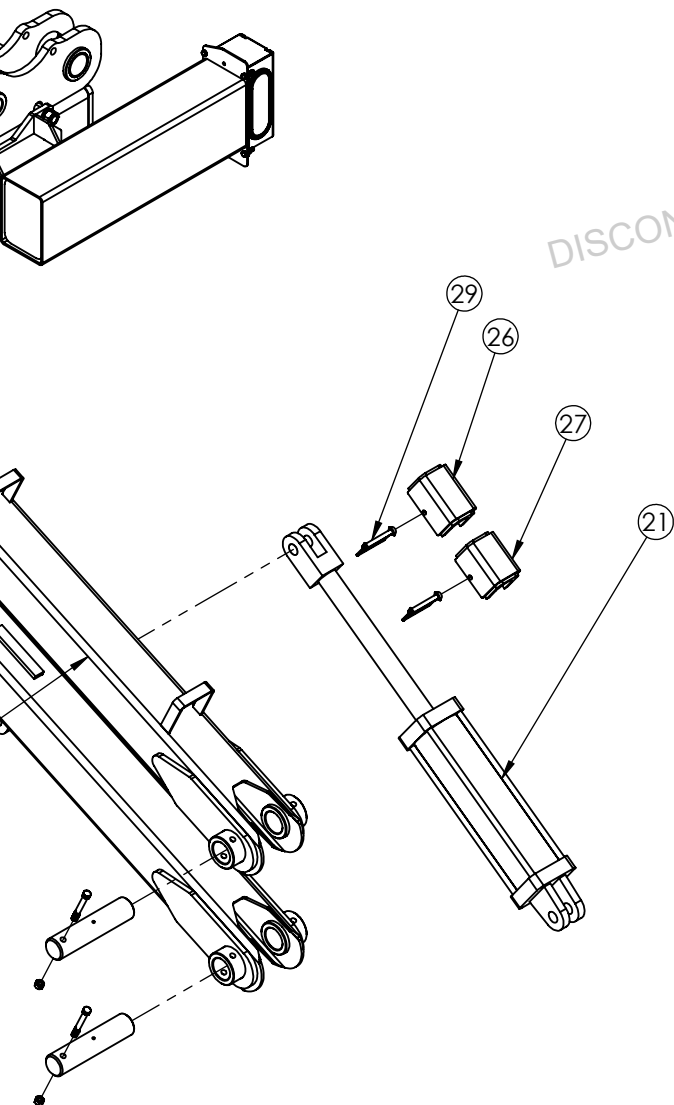
Please order replacement parts by PART NO., DESCRIPTION, and COLOR

| ITEM | PART # | DESCRIPTION | QTY |
|------|-----------------|------------------------------------|-----|
| 1 | 00004 | WASHER, FLAT, .313 | 4 |
| 2 | 00007 | NUT, .313NC HEX | 6 |
| 3 | 00059 | WASHER, FLAT .375 | 35 |
| 4 | 00060 | WASHER, LOCK .375 | 3 |
| 5 | 00085 | WASHER, FLAT .50 | 8 |
| 6 | 00214 | WASHER, FLAT .25 | 6 |
| 7 | 00372 | BOLT, .313NC X 1.50 HEX HEAD GR.5 | 6 |
| 8 | 00482 | BOLT, .50NC X 1.75 HEX HEAD GR.5 | 4 |
| 9 | 00485 | BOLT, .25NC X 3.00 HEX HEAD GR.5 | 2 |
| 10 | 00523 | BOLT, .375NC X 1.25 HEX HEAD GR. 5 | 18 |
| 11 | 00685 | BOLT, .313 NC X 1.25 HEX HEAD GR.5 | 2 |
| 12 | 00907 | BOLT, .375NC X 1.00 HEX HEAD GR.5 | 32 |
| 13 | 00914 | BOLT, .375NC X 1.50 HEX HEAD GR.5 | 4 |
| 14 | 01076 | BOLT, .25NC X .75 HEX HEAD GR.5 | 4 |
| 15 | 01254 | BOLT, .50 NC X 1.50 HEX HEAD GR.5 | 4 |
| 16 | 01256 | BOLT, .375NC X 4.50 HEX HEAD GR.5 | 2 |
| 17 | 02178 | NUT, .50NC NYLON LOCK HEX | 8 |
| 18 | 02207 | BOLT, .375NC X 3.00 HEX HEAD GR.5 | 4 |
| 19 | 02579-95 | BUSHING, SPACER PIVOT | 4 |
| 20 | 02592 | NUT, .375NC NYLON LOCK HEX | 57 |
| 21 | 02772 | NUT, .25NC LOCK NYLON HEX | 6 |
| 22 | 02802 | NUT, .313NC NYLON LOCK HEX | 8 |
| 23 | 03652 | GROMMET RUBBER OVAL | 2 |
| 24 | 10241 | CANISTER | 1 |
| 25 | 11031 | GAS STRUT | 3 |
| 26 | 11032 | SHOCK ROD END | 6 |
| 27 | 11867 | RUBBER BUMPER | 2 |
| 28 | 11872 | DOOR LATCH | 1 |
| 29 | 12126 | SMV SIGN | 1 |
| 30 | 12723-76 | SIDE TANK BRACE LEFT | 1 |
| 31 | 12724-76 | SIDE TANK BRACE RIGHT | 1 |
| 32 | 12733-76 | UPPER LADDER | 1 |
| 33 | 12734-76 | LOWER LADDER | 1 |
| 34 | 12746-76 | BOOM MOUNT CAP | 1 |
| 35 | 12747 | LADDER ROLLER | 4 |
| 36 | 12784-76 | TOP ANGLE | 2 |
| 37 | 12798-76 | HOSE BRACKET | 1 |
| 38 | 12811-95 | LADDER BUSHING | 4 |
| 39 | 12812 | BUMPER SPACER | 2 |
| 40 | 14616 | EYE WASH TANK WITH LID CHR | 1 |
| - | 12793 | EYE WASH TANK WITH LID YLW | - |
| - | PL5A | LID F/ EYE WASH TANK | - |

Please order replacement parts by PART NO., DESCRIPTION, and COLOR

60' TOOLBAR CENTER SECTION PARTS BREAKDOWN



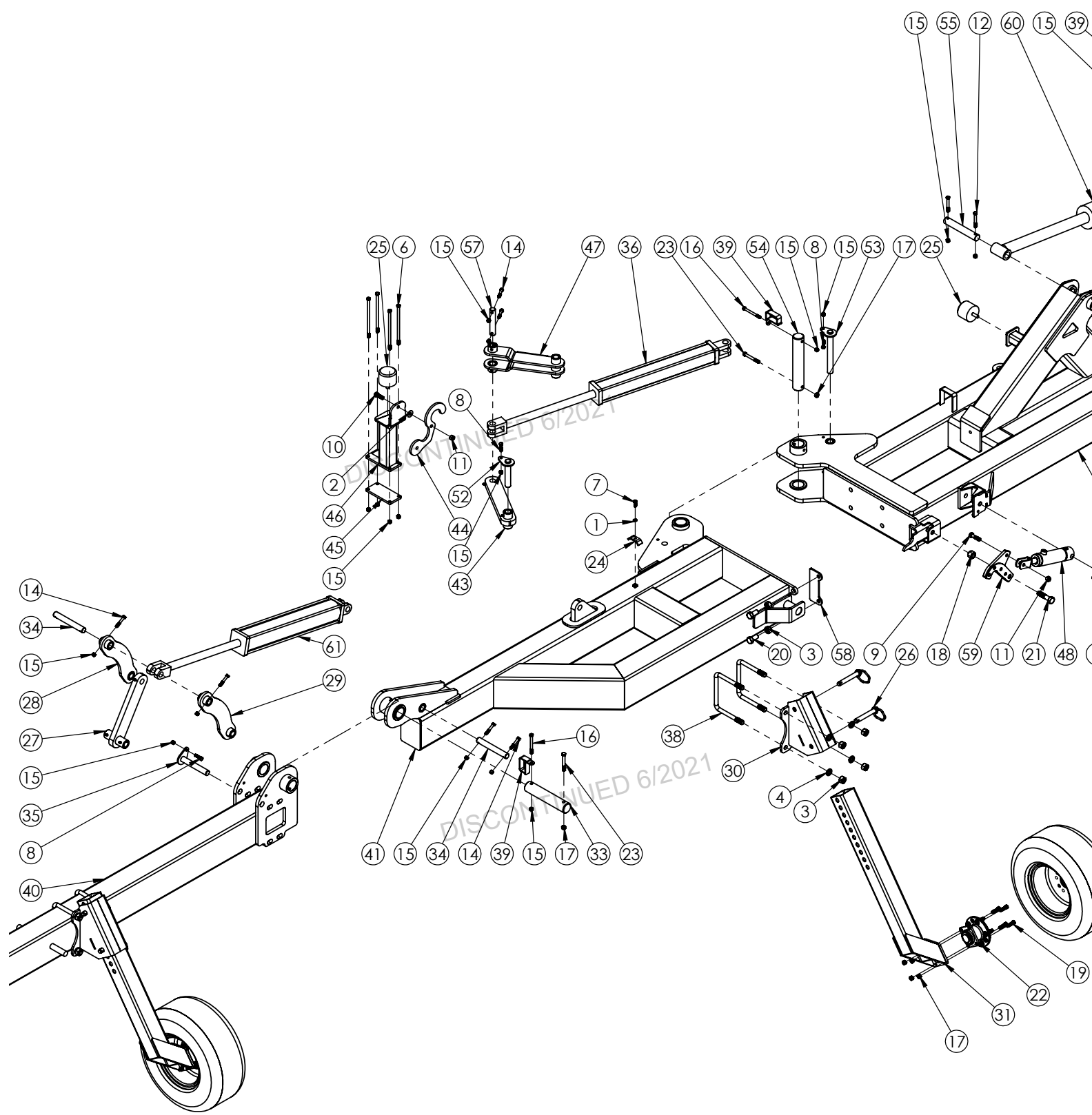


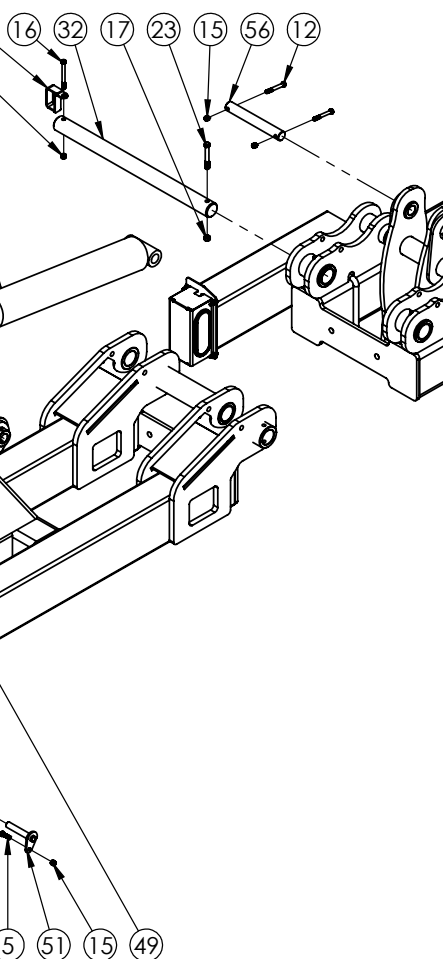
Amber light goes to the top
Red light must face the rear
Connect Yellow wire to left light
Connect Green wire to right light

| ITEM | PART # | DESCRIPTION | QTY. |
|------|-----------------|-----------------------------------|------|
| 1 | 00060 | WASHER, LOCK .375 | 4 |
| 2 | 00253 | NUT, .75 NC HEX | 8 |
| 3 | 00254 | WASHER, LOCK .75 | 8 |
| 4 | 00907 | BOLT, .375NC X 1.00 HEX HEAD GR.5 | 12 |
| 5 | 01899 | BOLT .375NC X .75 HEX HEAD GR.5 | 4 |
| 6 | 02207 | BOLT, .375NC X 3.00 HEX HEAD GR.5 | 4 |
| 7 | 02494 | BOLT, .375NC X 2.25 HEX HEAD GR.5 | 8 |
| 8 | 02592 | NUT, .375NC NYLON LOCK HEX | 24 |
| 9 | 02771 | NUT, .434NC NYLON LOCK HEX | 8 |
| 10 | 02772 | NUT, .25NC LOCK NYLON HEX | 8 |
| 11 | 03652 | GROMMET RUBBER OVAL | 4 |
| 12 | 04055 | BOLT, .25NC X 1.00 HEX HEAD GR.5 | 8 |
| 13 | 04796 | BOLT, .438NC X 3.50 HEX HEAD GR.5 | 8 |
| 14 | 14924 | LED LIGHT, SEALED YELLOW LAMP | 4 |
| 15 | 15014-76 | CENTER EXTENSION | 2 |
| 16 | 15065-95 | CENTER HINGE PIN | 2 |
| 17 | 15066-95 | LIFT CYLINDER PIN | 2 |
| 18 | 15067-95 | LINKAGE PIN | 2 |
| 19 | 15082 | 3 X 6 CYLINDER | 2 |
| 20 | 15091 | U-BOLT .75 F/ 5 X 7 TUBE | 4 |
| 21 | 15257 | 4" X 14" CYLINDER | 2 |
| 22 | 15465-76 | 60' CENTER LINKAGE | 2 |
| 23 | 15654-76 | TOP LIFT ARM | 2 |
| 24 | 15655-76 | LIFT ARM WITH CYLINDER EAR | 2 |
| 25 | 15656-76 | TOOLBAR CENTER SECTION | 1 |
| 26 | 15659-76 | CYLINDER STOP 5" | 2 |
| 27 | 15660-76 | CYLINDER STOP 4.5" | 2 |
| 28 | 15677-95 | LIFT PIN | 8 |
| 29 | 15678 | PIN, SAFETY LOCK .375" X 3" | 4 |
| 30 | 15697-76 | Block holder | 2 |
| 31 | 15698-76 | HYD MOUNT BRACKET | 4 |
| 32 | 15699-76 | HYD MOUNT BRACKET | 4 |
| 33 | 15702-76 | GAUGE HOLDER | 1 |
| 34 | 15855-76 | LIGHT POD | 2 |

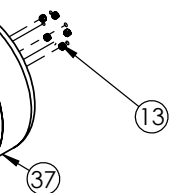
Please order replacement parts by **PART NO., DESCRIPTION, and COLOR**

60' TOOLBAR WING ASSEMBLY AND PARTS BREAKDOWN





NOTE: ONLY RIGHT SIDE SHOWN

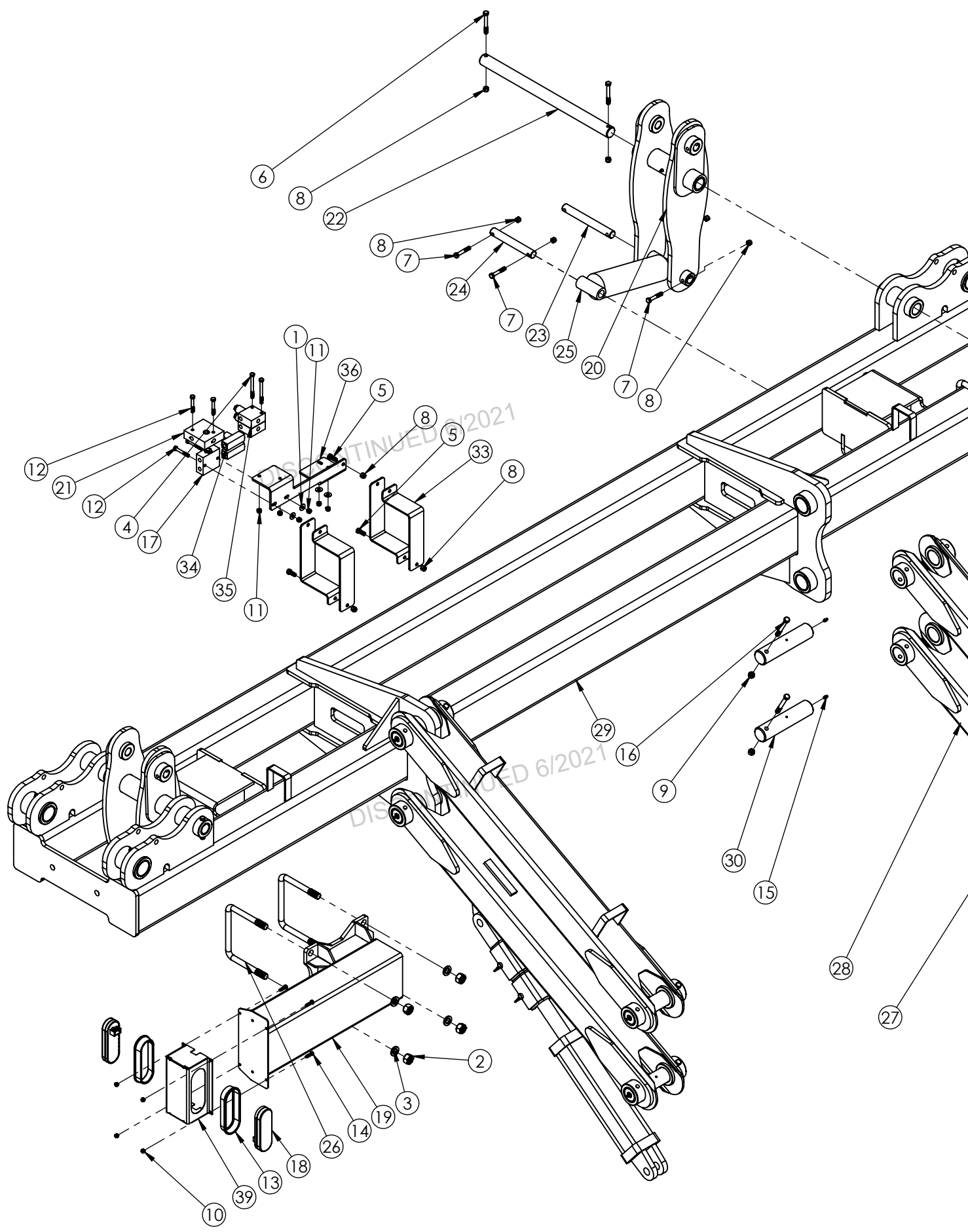


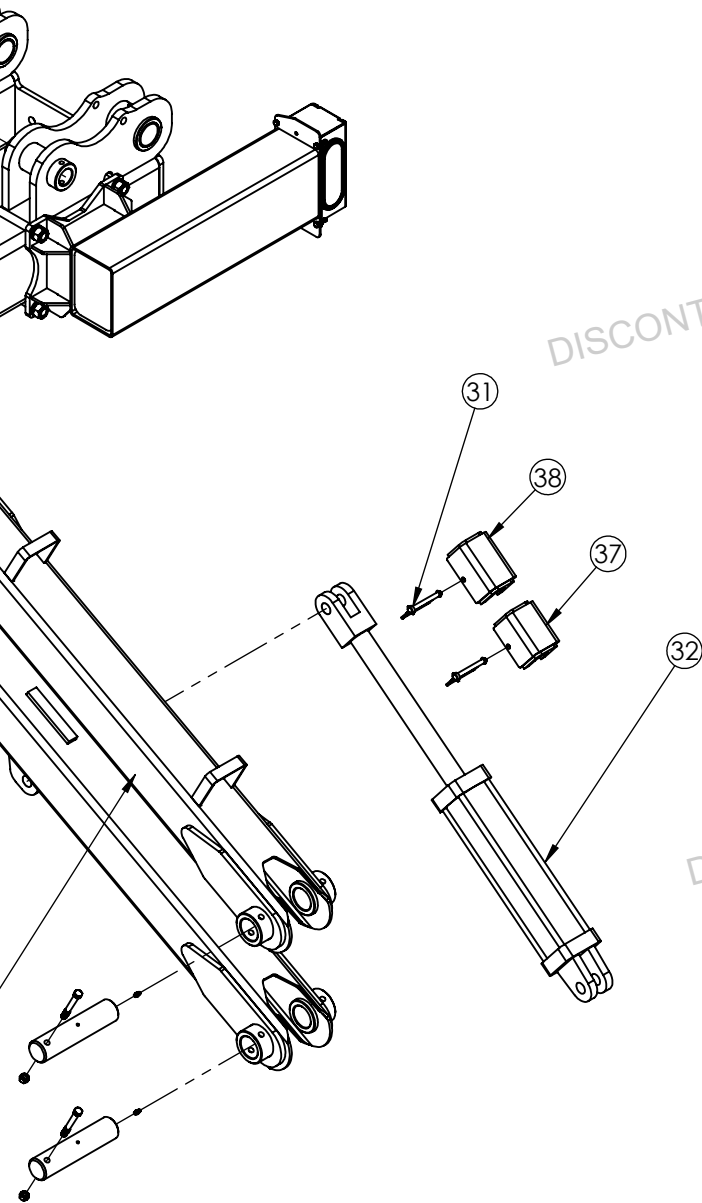
| TEM | PART # | DESCRIPTION | QTY. |
|--------------------------------------------------------------------|-----------------|----------------------|------|
| 52 | 15486-95 | LINKAGE PIN | 2 |
| 53 | 15487-95 | LINKAGE PIN | 2 |
| 54 | 15488-95 | SIDE HINGE PIN | 2 |
| 55 | 15489-95 | CYLINDER PIN | 2 |
| 56 | 15490-95 | CENTER LINK PIN | 2 |
| 57 | 15491-95 | LINKAGE PIN | 2 |
| 58 | 15492-76 | SPACER | 2 |
| 59 | 15493-76 | LOCK LATCH | 2 |
| 60 | 15494 | 4 X 20 WELD CYLINDER | 2 |
| 61 | 15495 | 3.5 X 20 CYLINDER | 2 |
| Please order replacement parts by PART NO., DESCRIPTION, and COLOR | | | |

| TEM | PART # | DESCRIPTION | QTY. |
|-----|-----------------|------------------------------------|------|
| 1 | 00060 | WASHER, LOCK .375 | 2 |
| 2 | 00085 | WASHER, FLAT .50 | 2 |
| 3 | 00253 | NUT, .75NC HEX | 20 |
| 4 | 00254 | WASHER, LOCK .75 | 16 |
| 5 | 00523 | BOLT, .375NC X 1.25 HEX HEAD GR. 5 | 2 |
| 6 | 00782 | BOLT .375NC X 8.50 GR5 HEX | 8 |
| 7 | 00907 | BOLT, .375NC X 1.00 HEX HEAD GR.5 | 2 |
| 8 | 00914 | BOLT, .375NC X 1.50 HEX HEAD GR.5 | 6 |
| 9 | 01253 | BOLT, .50NC X 2.00 HEX HEAD GR.5 | 2 |
| 10 | 01254 | BOLT, .50NC X 1.50 HEX HEAD GR.5 | 2 |
| 11 | 02178 | NUT, .50NC NYLON LOCK, HEX | 4 |
| 12 | 02207 | BOLT, .375NC X 3.00 HEX HEAD GR.5 | 8 |
| 13 | 02213 | NUT WHEEL 12MM X 1.5 ZINC | 20 |
| 14 | 02494 | BOLT, .375NC X 2.25 HEX HEAD GR.5 | 12 |
| 15 | 02592 | NUT, .375NC NYLON LOCK HEX | 42 |
| 16 | 02769 | BOLT, .375NC X 4.00 HEX HEAD GR.5 | 6 |
| 17 | 02771 | NUT, .434NC NYLON LOCK HEX | 22 |
| 18 | 02961 | NUT, .75NC NYLON LOCK HEX | 2 |
| 19 | 04050 | BOLT .438NC X 1.50 HEX HEAD GR.5 | 16 |
| 20 | 04052 | BOLT, .75UNC X 1.5 HEX HEAD GR.5 | 4 |
| 21 | 04222 | BOLT, .75NC X 3.00 HEX GR.8 | 2 |
| 22 | 04369-30 | 5-BOLT HUB/SPINDLE | 4 |
| 23 | 04796 | BOLT, .438NC X 3.50 HEX HEAD GR.5 | 6 |
| 24 | 09218-95 | HOSE KEEPER, 2 HOSE | 2 |
| 25 | 10443 | RUBBER BUMPER | 4 |
| 26 | 14681 | HITCH PIN | 8 |
| 27 | 15035-76 | END WING LINKAGE | 2 |
| 28 | 15036-76 | RIGHT CURVED LINKAGE | 2 |
| 29 | 15037-76 | LEFT CURVED LINKAGE | 2 |
| 30 | 15052-76 | GAUGE WHEEL MOUNT | 4 |
| 31 | 15053-76 | GAUGE WHEEL ARM | 4 |
| 32 | 15063-95 | CENTER HINGE PIN | 2 |
| 33 | 15064-95 | END HINGE PIN | 2 |
| 34 | 15067-95 | LINKAGE PIN | 4 |
| 35 | 15079-95 | LINKAGE PIN | 2 |
| 36 | 15084 | 3 X 20 Cylinder | 2 |
| 37 | 15090 | TIRE 20.5 X 8.0 -10 PLY W/ RIM | 4 |
| 38 | 15091 | U-BOLT .75 F/ 5 X 7 TUBE | 8 |
| 39 | 15102-76 | HOSE HOLDER | 6 |
| 40 | 15457-76 | 60' TOOLBAR OUTER WING | 2 |
| 41 | 15458-76 | 60' TOOLBAR SECOND RIGHT WING | 1 |
| 42 | 15459-76 | 60' TOOLBAR SECOND LEFT WING | 1 |
| 43 | 15460-76 | SIDE HINGE LINKAGE | 2 |
| 44 | 15461-76 | S-LATCH | 2 |
| 45 | 15462-76 | LATCH MOUNT PLATE | 2 |
| 46 | 15463-76 | BUMPER STOP | 2 |
| 47 | 15464-76 | SIDE HINGE LINKAGE | 2 |
| 48 | 15466 | CYLINDER 2.00 X 3.00 X 1.00" ROD | 2 |
| 49 | 15469-76 | 60' TOOLBAR RIGHT FIRST WING | 1 |
| 50 | 15470-76 | 60' TOOLBAR LEFT FIRST WING | 1 |
| 51 | 15485-95 | LOCK CYLINDER PIN | 2 |

Please order replacement parts by PART NO., DESCRIPTION, and COLOR

40' TOOLBAR CENTER SECTION PARTS BREAKDOWN

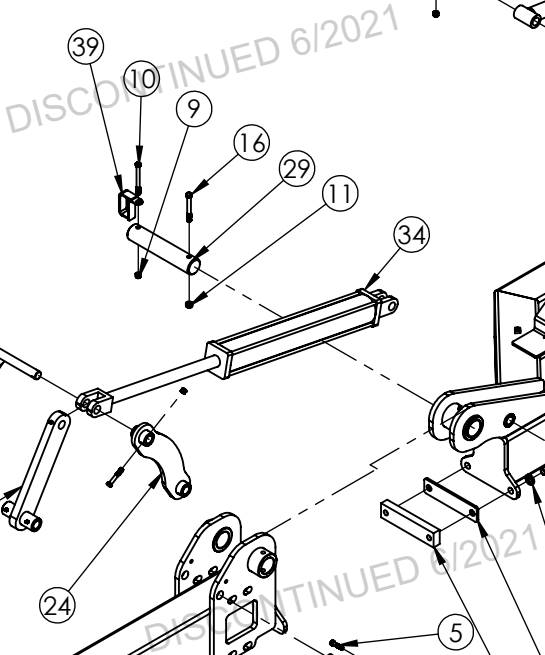


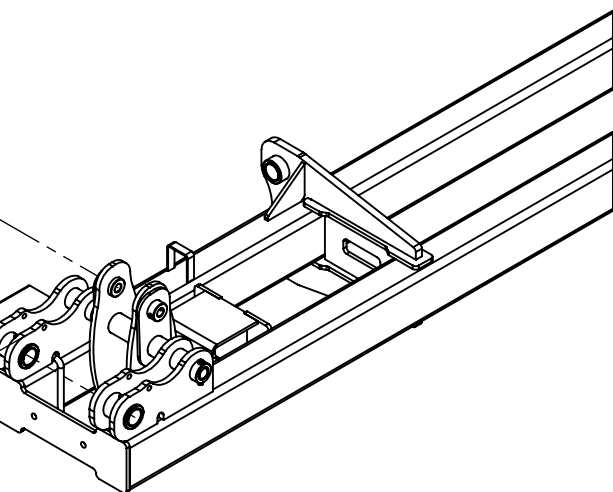


Amber light goes to the top
Red light must face the rear

Connect Yellow wire to left light
Connect Green wire to right light

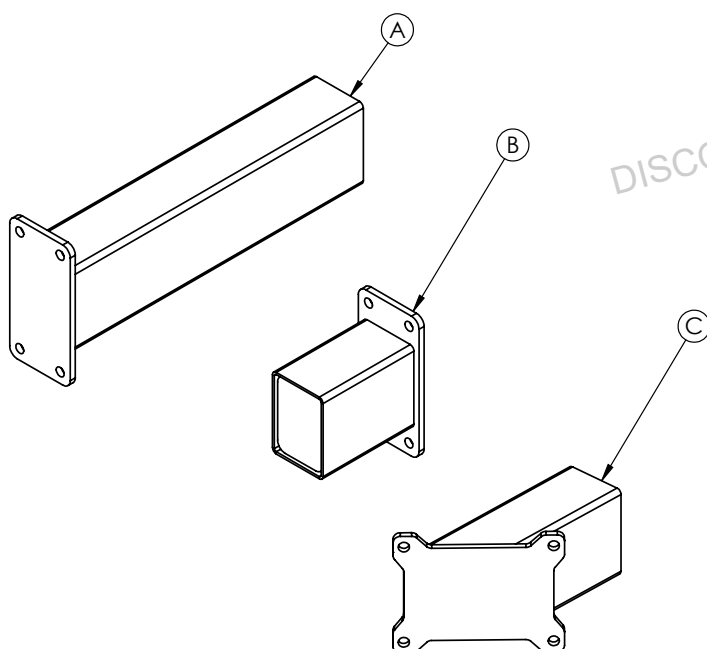
| ITEM | PART # | DESCRIPTION | QTY. |
|--------------------------------------------------------------------|----------|------------------------------------|------|
| 1 | 00004 | WASHER, FLAT .313 | 4 |
| 2 | 00253 | NUT, .75NC HEX | 8 |
| 3 | 00254 | WASHER, LOCK .75 | 8 |
| 4 | 00372 | BOLT .313NC X 3.50 HEX HEAD GR.5 | 2 |
| 5 | 00907 | BOLT, .375NC X 1.00 HEX HEAD GR.5 | 3 |
| 6 | 02207 | BOLT, .375 NC X 3.00 HEX HEAD GR.5 | 4 |
| 7 | 02494 | BOLT, .375NC X 2.25 HEX HEAD GR.5 | 8 |
| 8 | 02592 | NUT, .375NC NYLON LOCK HEX | 15 |
| 9 | 02771 | NUT, .434NC NYLON LOCK HEX | 8 |
| 10 | 02772 | NUT, .25NC LOCK NYLON HEX | 8 |
| 11 | 02802 | NUT, .313NC NYLON LOCK HEX | 6 |
| 12 | 03547 | BOLT, .313NC X 2.25 HEX HEAD GR.5 | 4 |
| 13 | 03652 | GROMMET RUBBER, OVAL | 4 |
| 14 | 04055 | BOLT, .25NC X 1.00 HEX HEAD GR.5 | 8 |
| 15 | 04642 | ZERK, GREASE, .25 UNF SF | 8 |
| 16 | 04796 | BOLT, .438NC X 3.50 HEX HEAD GR.5 | 8 |
| 17 | 07582 | DUAL PO CHECK | 1 |
| 18 | 14924 | LED LIGHT, SEALED YELLOW LAMP | 4 |
| 17 | 15014-76 | CENTER EXTENSION | 2 |
| 18 | 15034-76 | 40' CENTER LINKAGE | 2 |
| 19 | 15059 | PRRV MANIFOLD | 1 |
| 20 | 15065-95 | CENTER HINGE PIN | 2 |
| 21 | 15066-95 | LIFT CYLINDER PIN | 2 |
| 22 | 15067-95 | LINKAGE PIN | 2 |
| 23 | 15082 | 3 X 6 CYLINDER | 2 |
| 24 | 15091 | U-BOLT .75 F/ 5 X 7 TUBE | 4 |
| 27 | 15654-76 | TOP LIFT ARM | 2 |
| 28 | 15655-76 | LIFT ARM WITH CYLINDER EAR | 2 |
| 29 | 15656-76 | TOOLBAR CENTER SECTION | 1 |
| 30 | 15677-95 | LIFT PIN | 8 |
| 31 | 15678 | PIN, SAFETY LOCK .375" X 3" | 4 |
| 32 | 15695 | 3.5" X 14" CYLINDER | 2 |
| 33 | 15698-76 | HYD MOUNT BRACKET | 4 |
| 34 | 15703 | FLOW CONTROL | 2 |
| 35 | 15704 | SEQUENCE VALVE | 2 |
| 36 | 15707-76 | HYDRAULIC BLOCK HOLDER | 1 |
| 37 | 15732-76 | CYLINDER STOP 4.5" F/ 3.5 BORE | 2 |
| 38 | 15733-76 | CYLINDER STOP 5.0" F/ 3.5 BORE | 2 |
| 39 | 15855-76 | LIGHT POD | 2 |
| Please order replacement parts by PART NO., DESCRIPTION, and COLOR | | | |





DISCONTINUED 6/2021

NOTE: ONLY RIGHT SIDE SHOWN

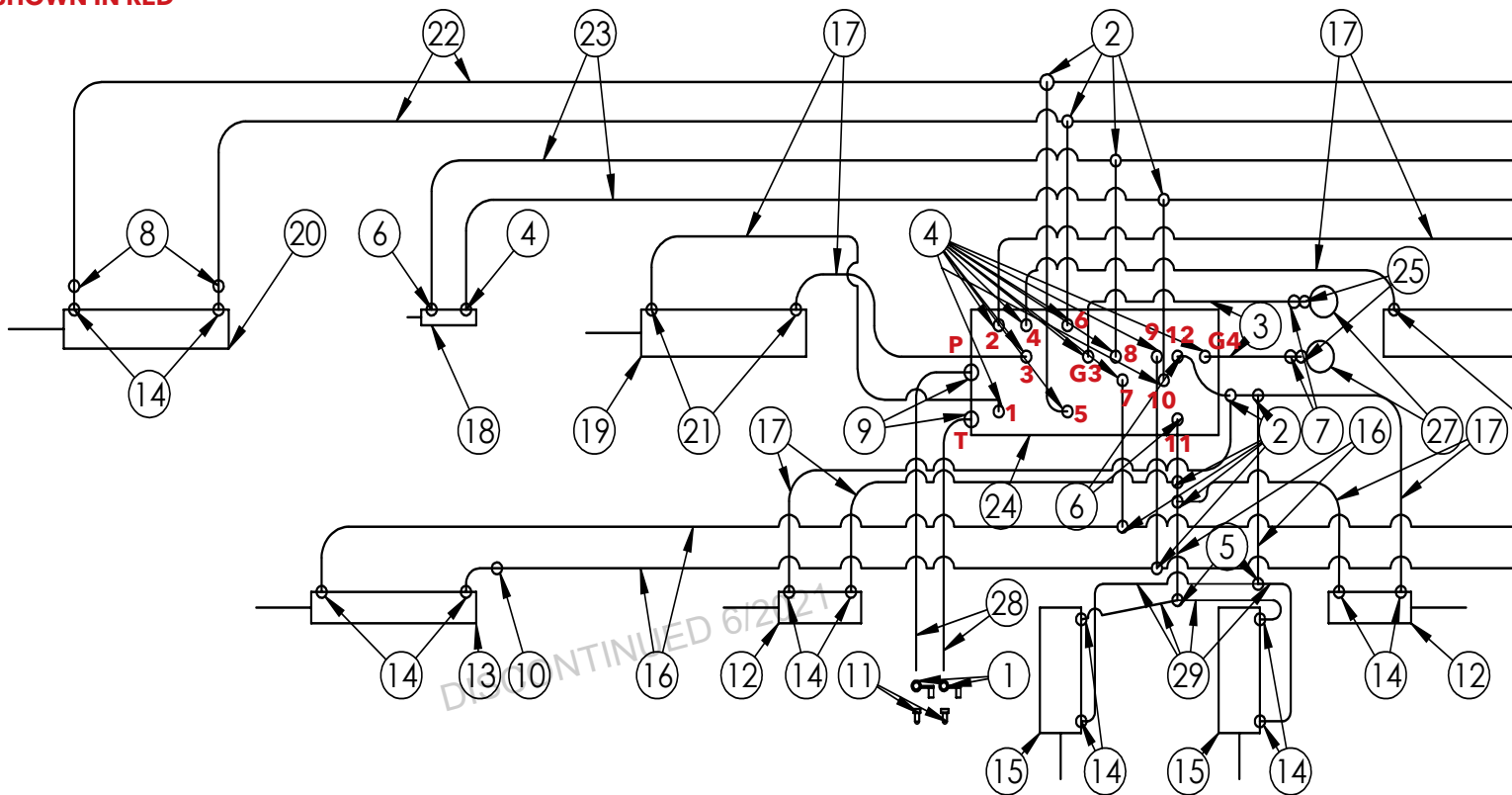


| ITEM | PART # | DESCRIPTION |
|---------------------------------------------------------------------|-----------------|-----------------------|
| A | 15015-76 | GUESS ROW EXTENSION |
| B | 15016-76 | 20" END ROW EXTENSION |
| C | 15099-76 | 20" ROW EXTENSION |
| Please order replacement parts by PART NO., DESCRIPTION, and COLOR. | | |

| ITEM | PART # | DESCRIPTION | QTY. |
|--------------------------------------------------------------------|-----------------|-----------------------------------|------|
| 1 | 00060 | WASHER, LOCK .375 | 4 |
| 2 | 00253 | NUT, .75NC HEX | 8 |
| 3 | 00254 | WASHER, LOCK.75 | 12 |
| 4 | 00907 | BOLT, .375NC X 1.00 HEX HEAD GR.5 | 4 |
| 5 | 00914 | BOLT, .375NC X 1.50 HEX HEAD GR.5 | 2 |
| 6 | 02207 | BOLT, .375NC X 3.00 HEX HEAD GR.5 | 4 |
| 7 | 02213 | NUT WHEEL 12MM X 1.5 ZINC | 10 |
| 8 | 02494 | BOLT, .375NC X 2.25 HEX HEAD GR.5 | 12 |
| 9 | 02592 | NUT, .375NC NYLON LOCK HEX | 22 |
| 10 | 02769 | BOLT .375NC X 4.00 GR.5 HEX | 4 |
| 11 | 02771 | NUT, .434NC NYLON LOCK HEX | 12 |
| 12 | 02961 | NUT, .75NC NYLON LOCK HEX | 4 |
| 13 | 04050 | BOLT .438NC X 1.50 GR5 HEX | 8 |
| 14 | 04052 | BOLT, .75UNC X 1.5 HEX HEAD GR.5 | 4 |
| 15 | 04369 | 5-BOLT HUB/SPINDLE | 2 |
| 16 | 04796 | BOLT, .438NC X 3.50 HEX HEAD GR.5 | 4 |
| 17 | 05047 | BOLT, .75NC X 2.50 HEX HEAD GR.5 | 4 |
| 18 | 09218-95 | HOSE KEEPER, 2 HOSE | 4 |
| 19 | 10443 | RUBBER BUMPER | 2 |
| 20 | 14681 | HITCH PIN | 2 |
| 21 | 15017-76 | 40' OUTER WING | 2 |
| 22 | 15035-76 | END WING LINKAGE | 2 |
| 23 | 15036-76 | RIGHT CURVED LINKAGE | 2 |
| 24 | 15037-76 | LEFT CURVED LINKAGE | 2 |
| 25 | 15038-76 | RIGHT WING 40' TOOLBAR | 1 |
| 26 | 15039-76 | LEFT WING 40' TOOLBAR (NOT SHOWN) | 1 |
| 27 | 15062-76 | WING REST | 2 |
| 28 | 15063-95 | CENTER HINGE PIN | 2 |
| 29 | 15064-95 | END HINGE PIN | 2 |
| 30 | 15067-95 | LINKAGE PIN | 6 |
| 31 | 15068-95 | CENTER LINK PIN | 2 |
| 32 | 15079-95 | LINKAGE PIN | 2 |
| 33 | 15083 | 3.5 X 20 CYLINDER | 2 |
| 34 | 15084 | 3 X 20 Cylinder | 2 |
| 35 | 15090 | TIRE 20.5 X 8.0 -10 PLY W/ RIM | 2 |
| 36 | 15091 | U-BOLT FOR 7 X 5 TUBE | 4 |
| 37 | 15100-76 | STOP BLOCK | 2 |
| 38 | 15101-76 | SPACER BLOCK | 2 |
| 39 | 15102-76 | HOSE HOLDER | 4 |
| 40 | 15467-76 | MOUNT FOR GAUGE WHEEL | 2 |
| 41 | 15524-76 | RIGHT GAUGE ARM | 1 |
| 42 | 15525-76 | LEFT GAUGE ARM (NOT SHOWN) | 1 |
| Please order replacement parts by PART NO., DESCRIPTION, and COLOR | | | |

60' TOOLBAR HYDRAULICS SCHEMATIC AND OPERATION

PORTS
SHOWN IN RED



Initial Operation:

! WARNING: To avoid personal injury or property damage, observe the following instructions. Do not attempt to operate the toolbar until the hydraulic lines and cylinders are completely charged with hydraulic fluid. Failure to do so may cause erratic and unpredictable toolbar operation that may cause personal injury and physical damage to the toolbar.

! WARNING: To avoid personal injury or property damage, observe the following instructions. Make sure whenever operating the toolbar that no one is in the line of unfolding and that no electric lines or tree branches will come in contact with the toolbar during folding or unfolding.

When doing this the first time it would be advisable to have another person standing safely behind the fertilizer applicator to ensure that none of the hoses or coupler are interfering with the toolbar operation and that the toolbar is correctly unfolding.

Note: Follow fold out and fold in procedure.

Note: Do not select more than one switch at a time.

Note: Tractor hydraulic flow control lever should be reduced to 25% for initial start up. Increased oil flow may be required on certain model tractors.

(See tractor manual for location and procedure)

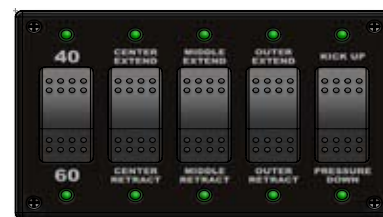
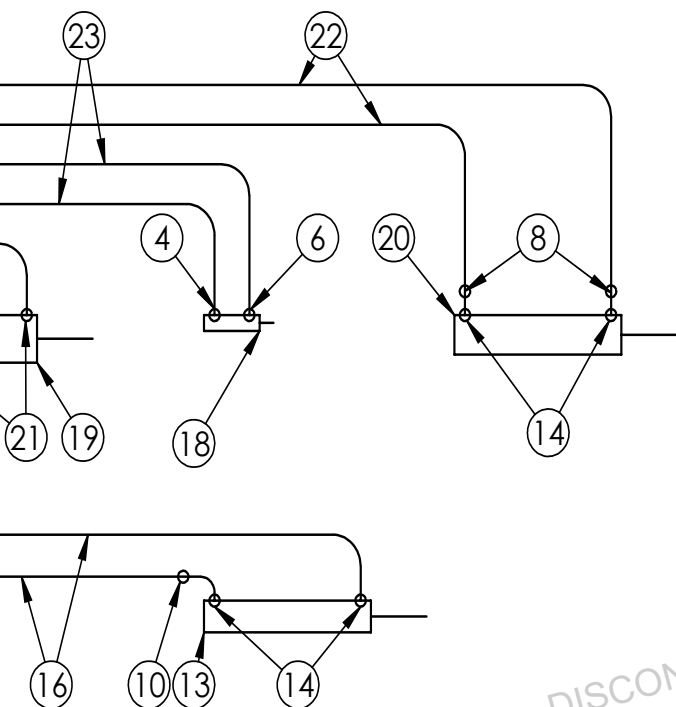
Unfolding the Toolbar :

1. Connect the controller to the toolbar and a power supply source. Make sure the hydraulic lever is locked on the pressure side and will not time out.
2. Select 40 or 60. If 40 is selected the outer wings will not fold out and the bar will function like a 40' bar. If 60 is selected the full bar will be utilized.
3. Before unfolding the bar make sure the bar is kicked up and the toolbar is raised. Press and hold the kick up button.
4. To unfold the toolbar first press and hold the center extend button until cylinders are fully extended.
5. Next press and hold the middle extend button. Hold this button until the wing cylinders fully extend and the latch cylinders on the front side fully latch. **Failure to fully latch the cylinders will cause the toolbar to open up during operation.**
6. If the bar is in 40' mode continue to activate the down pressure. If the bar is in 60' mode press and hold the outer extend until the wings are level with the rest of the bar.

After the toolbar has been unfolded the first time, stop and take a moment to make sure all hoses are routed correctly and there are no interference problems.

Folding the Toolbar:

1. Press and hold the kick up button until wings are raised and toolbar is lifted.
2. Press and hold the outer retract button until wings are fully folded. Watch to make sure that folding latched are hooked.
3. Press and hold the middle retract button until wings are fully folded.
4. Press and hold center retract button until wings are fully folded. After folding shut off the hydraulic lever for transportation.



26

HYDRAULIC PARTS LIST

| ITEM | PART # | QTY | DESCRIPTION |
|------|--------|-----|---------------------------------------|
| 1 | 05198 | 2 | COUPLER RUBBER CAP |
| 2 | 05203 | 10 | #6 FEMALE JIC TO #6 MALE JIC (2X) TEE |
| 3 | 05212 | 2 | .25" X 18.50" HYD HOSE |
| 4 | 05243 | 14 | #6 MALE O-RING TO #6 JIC MALE STR |
| 5 | 07072 | 2 | #6 MALE JIC TEE |
| 6 | 11143 | 4 | #6 O-RING X #6 MALE JIC 90° |
| 7 | 12374 | 2 | #6 JIC BULKHEAD 45° |
| 8 | 13255 | 4 | #6 JIC ORIFICE .045 |
| 9 | 13548 | 2 | #8 MALE O-RING TO #8 JIC MALE STR |
| 10 | 13631 | 2 | #6 JIC ORIFICE .060 |
| 11 | 13888 | 2 | HYDRAULIC QUICK COUPLER #8 O-RING |
| 12 | 15082 | 2 | CYLINDER HYD, 3.00 X 6.00 |
| 13 | 15084 | 2 | CYLINDER HYD, 3.00 X 20.00 |
| 14 | 15158 | 16 | #8 O-RING X #6 MALE JIC 90° |
| 15 | 15257 | 2 | CYLINDER HYD 4.00 X 14.00 |
| 16 | 15277 | 6 | .375" X 168" HYD HOSE |
| 17 | 15279 | 8 | .375" X 108" HYD HOSE |
| 18 | 15466 | 2 | CYLINDER HYD 2.00 X 3.00 |
| 19 | 15494 | 2 | CYLINDER HYD, 4.00 X 20.00 |
| 20 | 15495 | 2 | CYLINDER HYD, 3.50 X 20.00 |
| 21 | 15496 | 4 | #10 O-RING X #6 MALE JIC 90° |
| 22 | 15497 | 4 | .375" X 252" HYD HOSE |
| 23 | 15498 | 4 | .25" X 192" HYD HOSE |
| 24 | 15499 | 1 | 60' TOOLBAR HYDRAULIC BLOCK |
| 25 | 15502 | 2 | #6 FEMALE JIC SWIVEL X #4 FEMALE PIPE |
| 26 | 15766 | 1 | CONTROLLER F/ 60' TOOLBAR TRAILER |
| - | 15516 | 1 | WIRE HARNESS 30' F/ CONTROLLER |
| 27 | 15548 | 2 | GAUGE HYD 3000 PSI #4 PIPE |
| 28 | 15700 | 2 | .50" X 384" HYD HOSE |
| 29 | 15701 | 4 | .375 X 72" HYD HOSE |

Please order replacement parts by PART NO., DESCRIPTION, and COLOR

Down Pressure Operation:

The amount of down pressure can be seen on the hydraulic pressure gauge. Only use as much down pressure required to keep the coultter at the proper depth. **Do not exceed 1500 PSI** to prevent the wings from lifting up the center section.

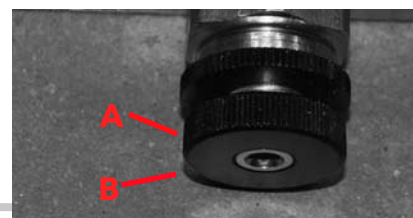
Activating the Down Pressure

1. After the toolbar has been fully unfolded press the pressure down button.
2. During operation hydraulic pressure will now show up on the gauge. (If the bar is equipped with the automatic down pressure and kick up switch, lower the three point and press the pressure down button. Now the bar is in automatic mode, raise and lower the three point when the switch is set to activate down pressure and kick up.)
3. To deactivate the down pressure, press and hold the kick up button until the wings are raised.

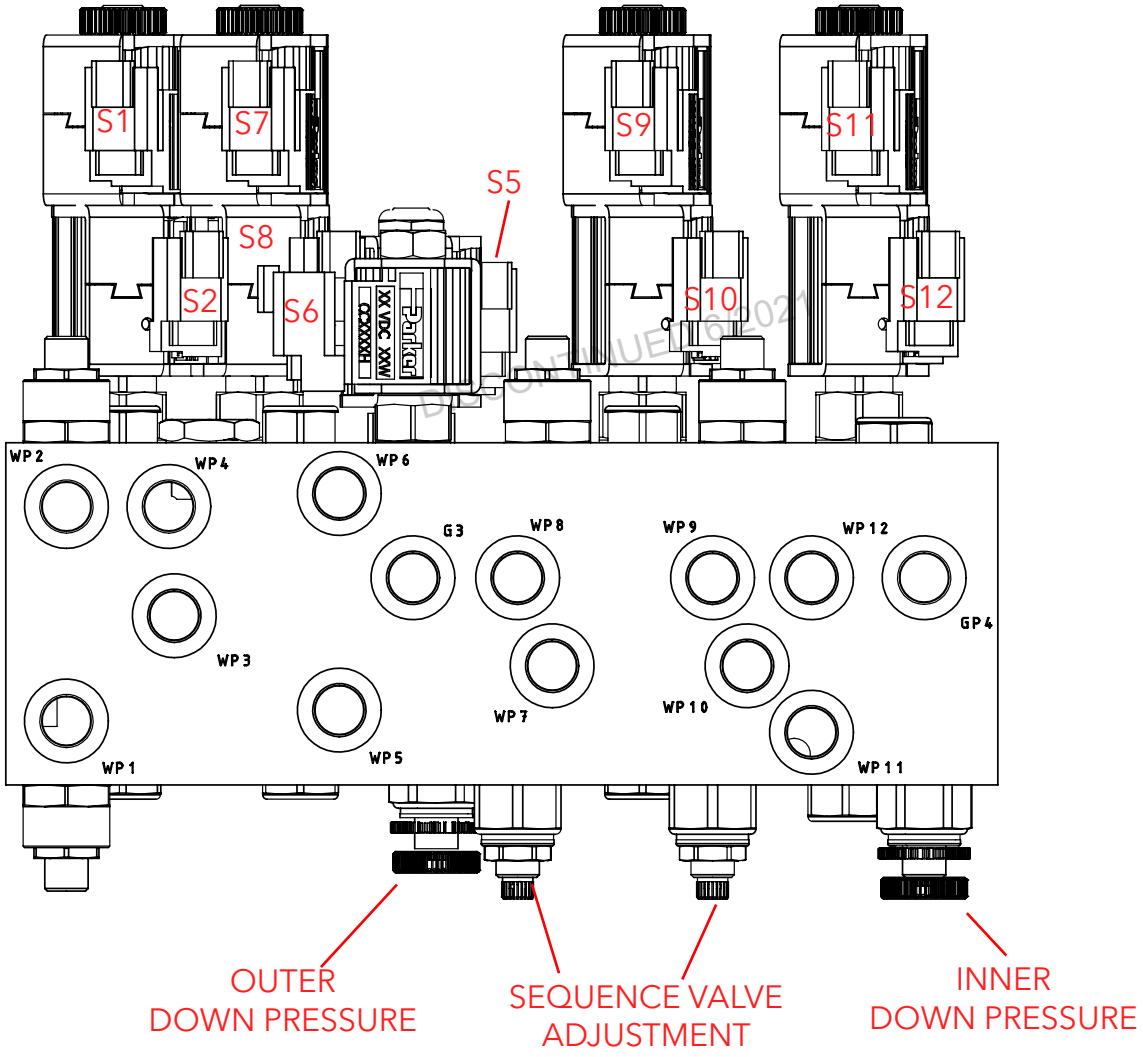
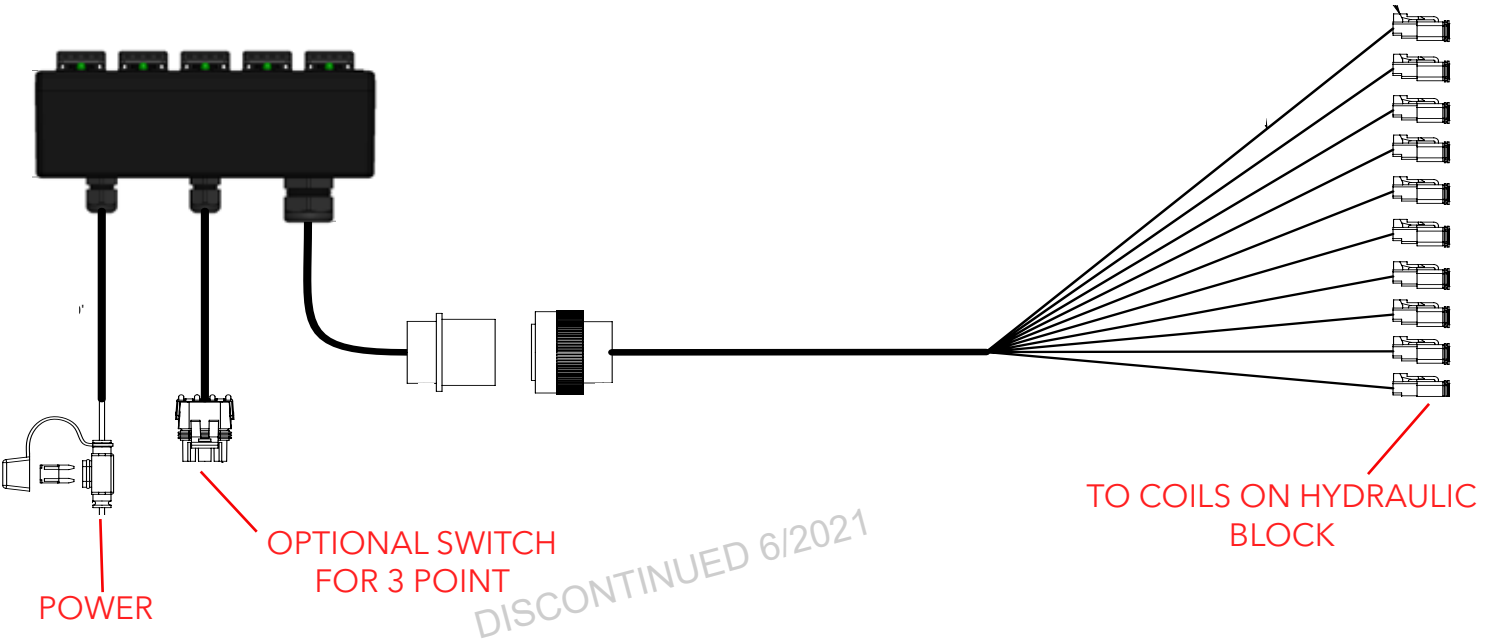
*** NOTE WHEN IN 60' MODE IF THE OUTER RETRACT BUTTON IS PRESSED THE PRESSURE DOWN WILL NOT WORK UNTIL OUTER EXTEND BUTTON HAS BEEN PRESSED AGAIN.**

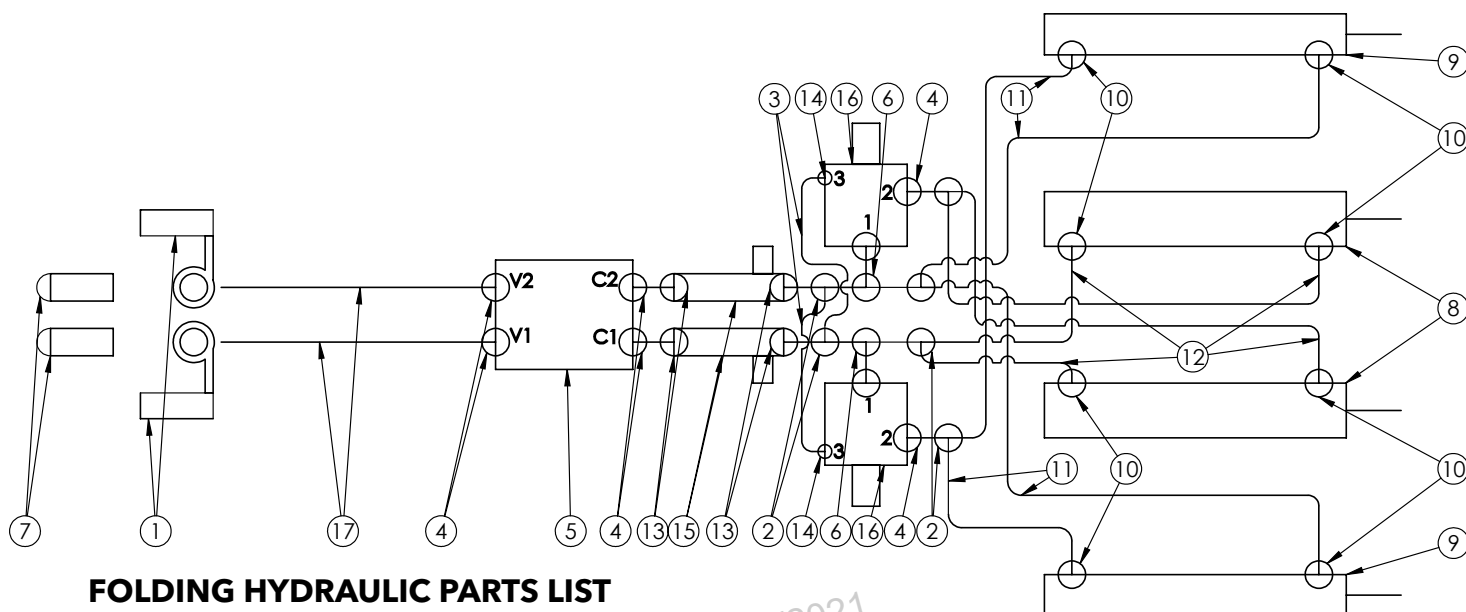
Adjusting the down pressure:

1. Loosen the jam nut (A)
2. To increase pressure turn the screw clockwise one turn at a time. (B)
3. To lower the pressure turn the screw counter clockwise one turn at a time.
4. Once the desired pressure is reached tighten the jam nut.



60' HYDRAULIC BLOCK WIRING





FOLDING HYDRAULIC PARTS LIST

| ITEM | PART # | QTY | DESCRIPTION |
|------|--------|-----|----------------------------------------|
| 1 | 05198 | 2 | COUPLER RUBBER CAP |
| 2 | 05203 | 6 | #6 FEMALE JIC TO #6 MALE JIC (2X) TEE |
| 3 | 05212 | 2 | .25" X 18.50" HYD HOSE |
| 4 | 05243 | 6 | #6 MALE O-RING TO #6 JIC MALE STR |
| 5 | 07582 | 1 | HYD PO CHECK VALVE |
| 6 | 12328 | 2 | #6 MALE O-RING TO #6 MALE JIC (2X) TEE |
| 7 | 13888 | 2 | QUICK COUPLER #8 O-RING |
| 8 | 15083 | 2 | CYLINDER HYD, 3.50 X 20.00 |
| 9 | 15084 | 2 | CYLINDER HYD, 3.00 X 20.00 |
| 10 | 15158 | 8 | #8 O-RING X #6 MALE JIC 90° |
| 11 | 15277 | 4 | .375" X 168" HYD HOSE |
| 12 | 15279 | 4 | .375" X 108" HYD HOSE |
| 13 | 15306 | 4 | #6 MALE O-RING X #6 FEMALE JIC |
| 14 | 15311 | 2 | #6 MALE JIC X #4 MALE O-RING 90° |
| 15 | 15703 | 2 | FLOW CONTROL VALVE |
| 16 | 15704 | 2 | SEQUENCE VALVE |
| 17 | 15705 | 2 | .375" X 384" HYD HOSE |

Please order replacement parts by **PART NO.**, **DESCRIPTION**, and **COLOR**.

Unfolding the toolbar :

When doing this the first time it would be advisable to have another person standing safely behind the fertilizer applicator to ensure that none of the hoses or coulters are interfering with the toolbar operation and that the toolbar is correctly unfolding.

Note: Do not select more than one switch at a time.
Note: Tractor hydraulic flow control lever should be reduced to 25% for initial start up. Increased oil flow may be required on certain model tractors.

(See tractor manual for location and procedure)

1. Fully extend the kick up cylinders and bar lift cylinders.
3. To unfold the toolbar move the hydraulic lever connected to the fold cylinders in the tractor to the extend position
4. Activate down pressure (see pg. 30)
5. Unit is now ready for field operation

After the toolbar has been unfolded the first time, stop and take a moment to make sure all hoses are routed correctly and there are no interference problems.

Folding the toolbar:

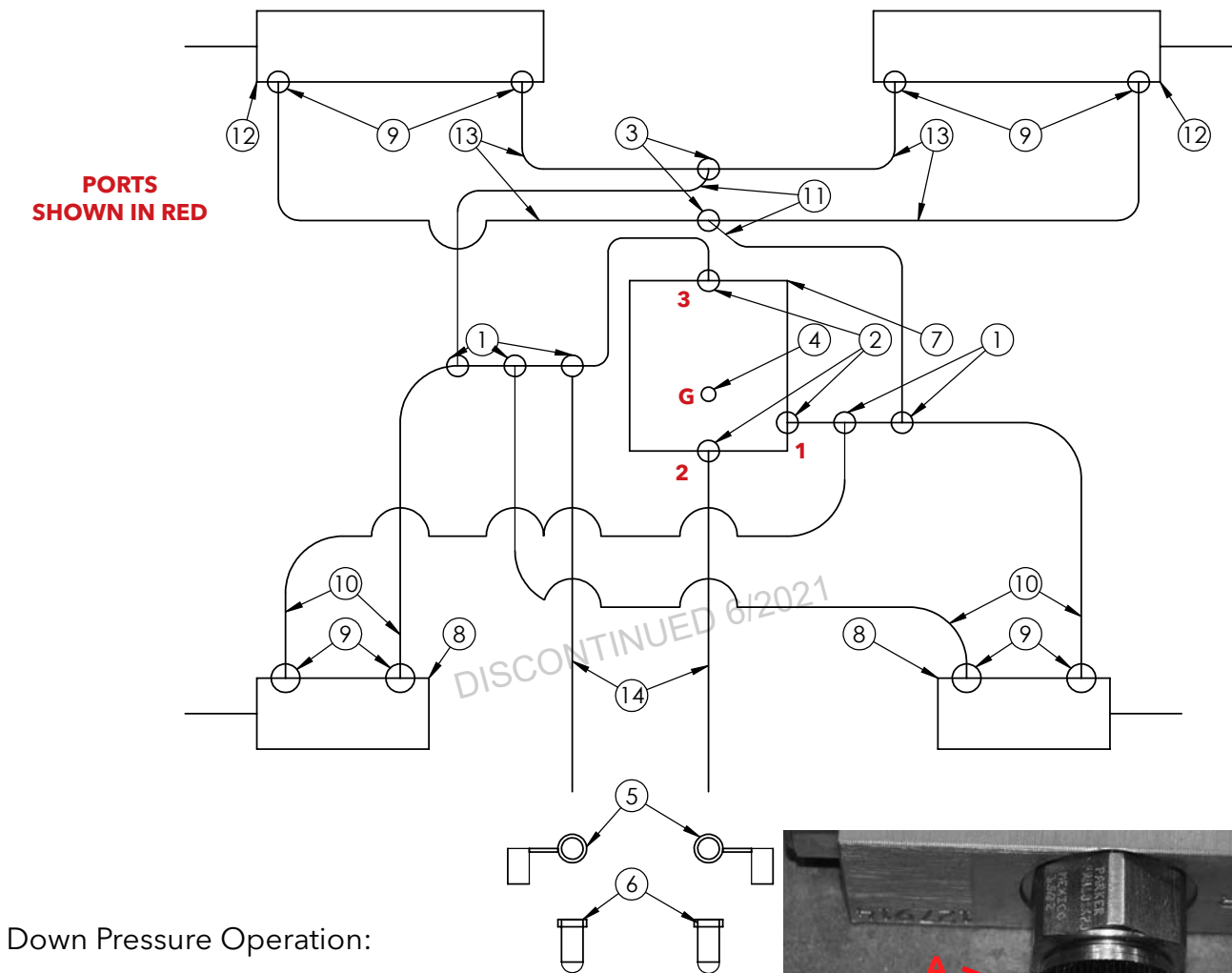
1. Move the hydraulic lever connected to the kick up cylinders and the lift cylinders in the tractor to the extend position.
3. Once fully extended move the hydraulic lever connected to the fold cylinders in the tractor to retract position

Initial Operation:

! WARNING: To avoid personal injury or property damage, observe the following instructions. Do not attempt to operate the toolbar until the hydraulic lines and cylinders are completely charged with hydraulic fluid. Failure to do so may cause erratic and unpredictable toolbar operation that may cause personal injury and physical damage to the toolbar.

! WARNING: To avoid personal injury or property damage, observe the following instructions. Make sure whenever operating the toolbar that no one is in line of unfolding and no electric lines or tree branches will come in contact with the toolbar during folding or unfolding.

40' DOWN PRESSURE AND KICK UP HYDRAULIC SCHEMATIC AND OPERATION



Down Pressure Operation:

The amount of down pressure can be seen on the hydraulic pressure gauge. Only use as much down pressure required to keep the coultter at the proper depth. **Do not exceed 1500 PSI.**

Activating the Down Pressure

1. After the toolbar has been fully unfolded **lock** the hydraulic lever connected to the kick up cylinders in the tractor to the retract position. This will lower the toolbar and drop the wings.
2. During operation leave the lever in the locked position. Hydraulic pressure will now show up on the gauge.
2. To deactivate the down pressure move the lever to extend until the wings are kicked up and the toolbar is raised.

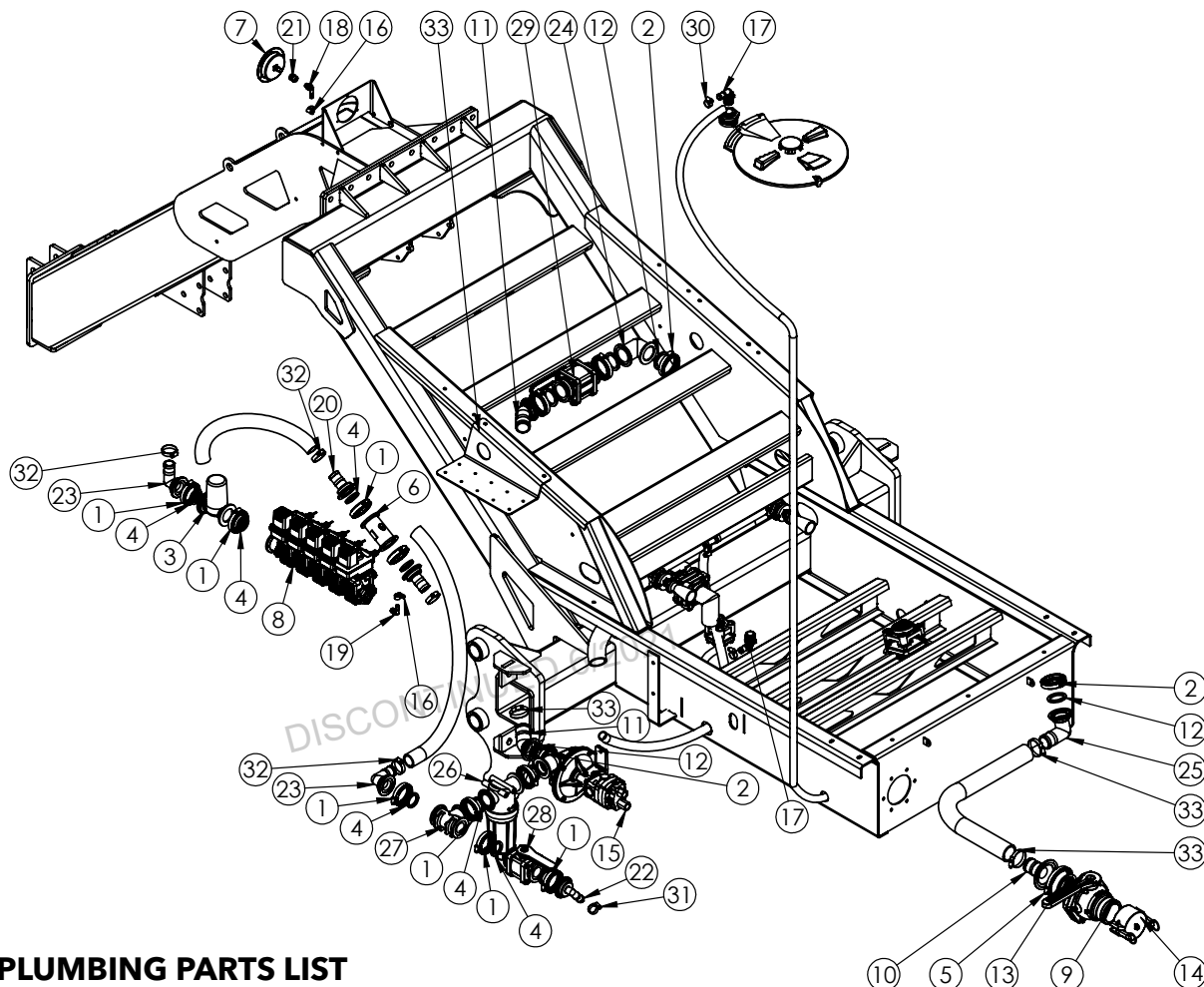
Adjusting the down pressure

1. Loosen the jam nut (A)
2. To increase pressure turn the screw clockwise one turn at a time. (B)
3. To lower the pressure turn the screw counter clockwise one turn at a time.
4. Once the desired pressure is reached tighten the jam nut.

DOWN PRESSURE HYDRAULIC PARTS LIST

| ITEM | PART # | QTY | DESCRIPTION |
|------|--------|-----|---------------------------------------|
| 1 | 05203 | 5 | #6 FEMALE JIC TO #6 MALE JIC (2X) TEE |
| 2 | 05243 | 3 | #6 MALE O-RING TO #6 JIC MALE STR |
| 3 | 07072 | 2 | #6 MALE JIC TEE |
| 4 | 12369 | 1 | GAUGE HYD 3000PSI - #4 O-RING |
| 5 | 12677 | 2 | COUPLER RUBBER CAP RED |
| 6 | 13888 | 2 | QUICK COUPLER #8 O-RING |
| 7 | 15059 | 1 | DOWN PRESSURE MANIFOLD |
| 8 | 15082 | 2 | CYLINDER HYD, 3.00 X 6.00 |
| 9 | 15158 | 8 | #8 O-RING X #6 MALE JIC 90° |
| 10 | 15279 | 4 | 375" X 108" HYD HOSE |
| 11 | 15277 | 2 | .375" X 168" HYD HOSE |
| 12 | 15695 | 2 | CYLINDER HYD, 3.50 X 14.00 |
| 13 | 15701 | 4 | .375 X 72" HYD HOSE |
| 14 | 15705 | 2 | .375" X 384" HYD HOSE |

Please order replacement parts by PART NO., DESCRIPTION, and COLOR.



PLUMBING PARTS LIST

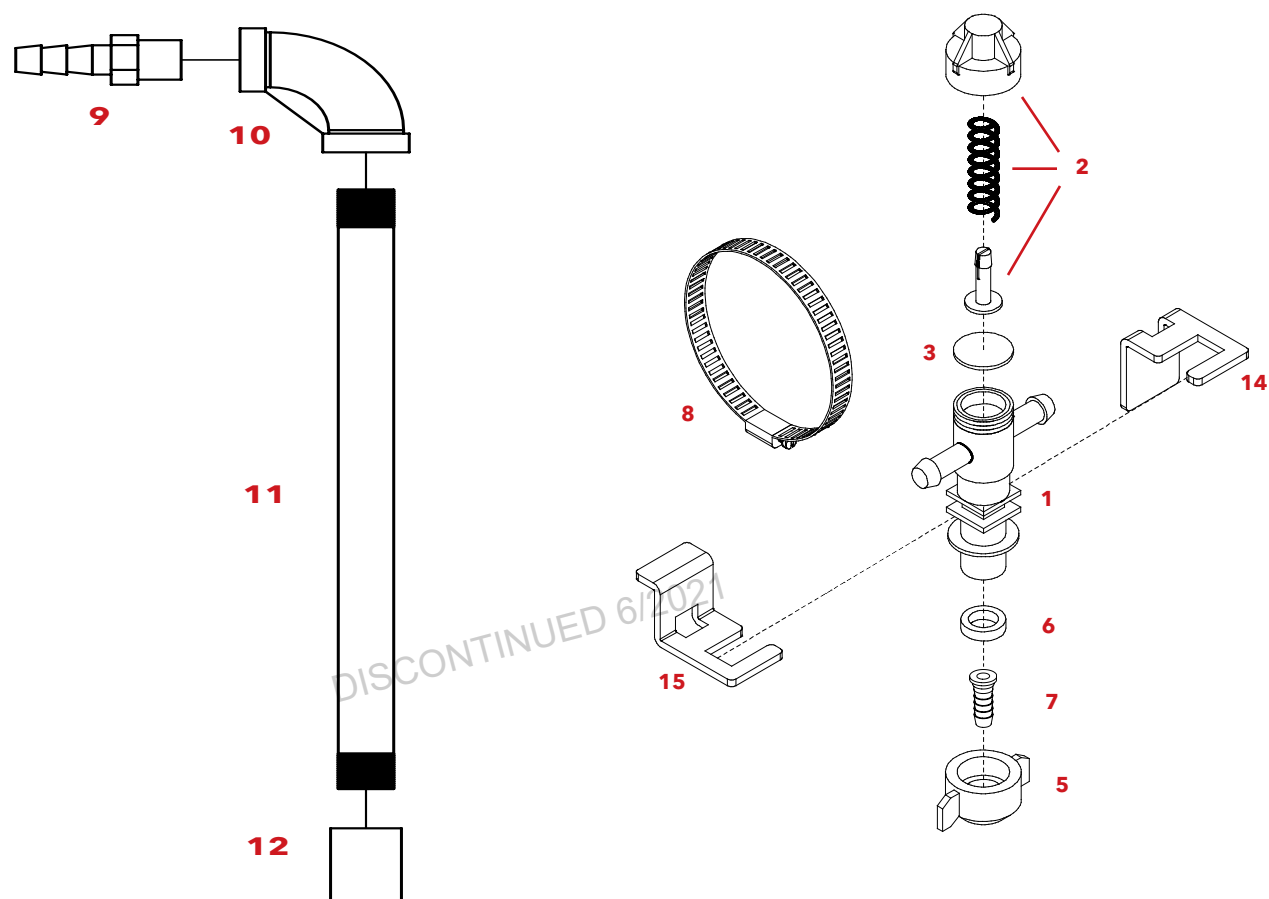
| ITEM | PART # | QTY | DESCRIPTION |
|------|---------------------|-----|-------------------------------------------|
| 1 | 09939 | 9 | CLAMP, 2" F/ FLG FTG |
| - | *09940 | 1 | CLAMP, 2" F/ FLG FTG FULL PORT |
| 2 | 09940 | 5 | CLAMP, 2" F/ FLG FTG FULL PORT |
| 3 | 10311 | 1 | REGULATOR VALVE |
| 4 | 112G | 9 | GASKET, 1.50" X .25" |
| - | *200G | 1 | GASKET, 2.00" X .25" |
| 5 | 12030 | 1 | CLAMP, 3" F/ FLG FTG |
| 6 | 12780 | 1 | FLOW METER |
| 7 | 15180 | 1 | GAUGE 4" LIQUID FILLED S.S. (0 - 160 PSI) |
| 8 | 16656 | 5 | BALL VALVE (5 OR 3 VALVES) |
| 9 | 15673 | 1 | 3" VALVE |
| 10 | 15674 | 1 | FTG, STR, 3" FLG X 2" HOSE BARB |
| 11 | 15684 | 2 | 220 FLANGE X 45 DEG 2" HOSE BARB |
| 12 | 200G | 5 | GASKET 2.00" X.25" |
| 13 | 300G | 1 | GASKET 3.00" X .25" |
| 14 | 634B3030 | 1 | VALVE CAP 3" |
| 15 | FMC150HYD304 | 1 | ACE HYD CENTRIFUGAL PUMP |
| - | C9314HM1 | 1 | HYPRO HYD CENTRIFUGAL PUMP |
| - | 15152 | 1 | SS. HYPRO HYD CENTRIFUGAL PUMP |
| - | 15153 | 1 | SS. ACE HYD CENTRIFUGAL PUMP |
| 16 | B6H | 2 | CLAMP, GEAR, SS. .375" HOSE |
| 17 | BEL1034 | 2 | FTG, ELBOW 1" MPT X .375 HB |

Please order replacement parts by **PART NO., DESCRIPTION, and COLOR.**

*** USED WITH C9314HM1 PUMP**

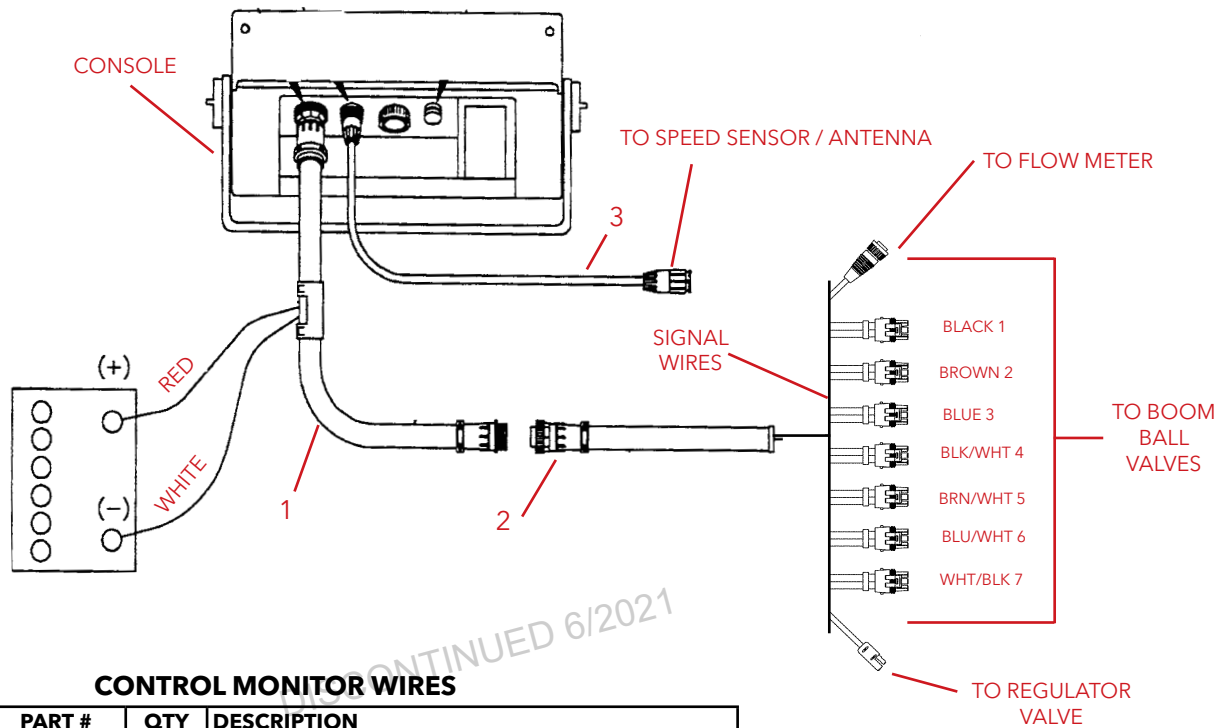
| ITEM | PART # | QTY | DESCRIPTION |
|------|---------------------|-----|--------------------------------------|
| 18 | EL1438 | 1 | FTG, ELB, .25" MPT X .375" HOSE BARB |
| 19 | EL3838 | 1 | FTG, ELB .375" MPT X.375" HOSE BARB |
| 20 | FA200 150HB | 2 | FTG, STR, 2" FLG X 1.50" HB |
| 21 | FC1400 | 1 | FTG, COUPLING .25" FPT POLY |
| 22 | FEL200 100HB | 1 | FTG, ELB, 2" FLG X 1.00" HB |
| 23 | FEL200 150HB | 2 | FTG, ELB, 2" FLG X 1.50" HB |
| 24 | FEL220 | 1 | FTG, ELB, 2" FP FLG X 2" FP FLG |
| 25 | FEL220 200HB | 1 | FTG, ELB, 2" FP FLG X 2.00" HB |
| 26 | FLST150 50 | 1 | FILTER |
| - | 11538 | 1 | REPLACEMENT 50 MESH SCREEN |
| - | 11537 | 1 | REPLACEMENT GASKET |
| 27 | FT200 | 1 | FTG, TEE 2" FLG |
| 28 | MV200CF | 1 | VALVE, BALL 2" FLG |
| 29 | MV220CF | 1 | VALVE, BALL 2" FP FLG |
| 30 | B12H | 2 | CLAMP, GEAR, SS, .75" HOSE |
| 31 | B16H | 2 | CLAMP, GEAR, SS, 1.00" HOSE |
| 32 | B32H | 4 | CLAMP, GEAR, SS, 1.50" HOSE |
| 33 | B44H | 4 | CLAMP, GEAR, SS, .2.00" HOSE |

Please order replacement parts by **PART NO., DESCRIPTION, and COLOR.**



NOZZLE PARTS LIST

| ITEM | PART # | DESCRIPTION |
|---------------------------------------------------------------------|------------|--------------------------------------|
| 1 | 09147 | 3/4" SINGLE END ASSEMBLY (ITEMS 1-3) |
| - | 09148 | 3/4" SINGLE TEE ASSEMBLY (ITEMS 1-3) |
| 2 | 21950 10PP | SPRING RETAINER CAP ASSEMBLY |
| 3 | 21953VI | DIAPHRAGM (VITON) |
| 5 | 07790 | RED FLAT FAN CAP (W/ GASKET) |
| 6 | 19438EPR | GASKET (EPDM) |
| 7 | K8400 3/8 | FTG, STR .375 HOSE BARB |
| 8 | B128H | STAINLESS STEEL GEAR CLAMP |
| 9 | 15121 | FTG, S.S. .25" MPT X .375" HB |
| 10 | 15122 | FTG, S.S. ELB .25" FPT |
| 11 | 15123 | FTG, S.S. .25" MPT X 8" NIPPLE |
| 12 | 15124 | FTG, S.S. .25" FPT FEMALE COUPLER |
| 13 | 15126 | HI-VERIFLOW1 ADJUSTABLE REG |
| - | 15127 | VERIFLOW1 HALF RATE ADJUSTABLE REG |
| 14 | 15160 | STAINLESS STEEL LOWER TIP BRACKET |
| 15 | 15161 | STAINLESS STEEL UPPER TIP BRACKET |
| Please order replacement parts by PART NO., DESCRIPTION, and COLOR. | | |



CONTROL MONITOR WIRES

| REF # | PART # | QTY | DESCRIPTION |
|-------|--------|-----|---------------------------|
| 1. | 10960 | 1 | 10' Console Control Cable |
| 2. | | 1 | Flow Control Cable |
| 3. | 10046 | 1 | 12' Speed Sensor Harness |

Please order replacement parts by PART NO. and DESCRIPTION.

CONTROL MONITOR

1 (SHOWN HERE IN A BANK OF FIVE)



CONTROL MONITOR SYSTEM

| REF # | PART # | QTY | DESCRIPTION |
|-------|-----------|-----|---------------------------------------|
| 1. | 16661 | 1 | BALL VALVE |
| 2. | 10826 | - | RAVEN 450 CONSOLE (5 SECTION - SHOWN) |
| 3. | 12780 | 1 | FLOW METER |
| 4. | 10311 | 1 | 1" REGULATING BUTTERFLY VALVE |
| 5. | 09859 | - | TEEJET CLAMP AND O-RING |
| 6. | 09858 | - | TEEJET O-RING (NOT SHOWN) |
| 7. | FA200 100 | - | 2" FLANGE TO 1" FLANGE FITTING |
| 8. | 09856 | - | S.S. CLIP FOR FITTING |
| 9. | 09857 | - | OUTLET STRAIGHT FITTING |

Guidelines For Fertilizer Applicator Calibration

Calibrating the Fertilizer Applicator

1. Mark off 660 feet (1/8 mile).
2. Fill the tank with water.
3. Set the applicator to your desired operating pressure.
4. Turn the applicator on and drive at the constant speed you will be spraying. Calibration on a road or unplowed field will give different results than on soft cultivated ground. Note tachometer reading so same speed can be maintained later.
5. Measure the amount of water it takes to refill the tank completely.
6. Calculate the amount applied:

$$\frac{\text{Number of gallons used} \times 66 (\text{factor})}{\text{Swath in Feet}} = \text{Gallons applied per acre}$$

Example: If 10 gallons are used in 660 feet and the swath is 40 feet, spraying rate is 16.5 gallons per acre.

$$\frac{10 \times 66}{40} = \frac{660}{40} \text{ or } 16.5 \text{ gallons per acre}$$

7. To calculate the amount of chemical to put in the tank:

$$\frac{\text{Sprayer Tank Size}}{\text{Desired GPA}} = \text{Acres Covered} \quad \text{then;} \quad \frac{\text{Recommended amount of chemical per acre} \times \text{Acres Covered}}{\text{Amount of chemical per tankful}}$$

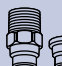


Example: If a 500 gallon tank is used and 16.5 gallons per acre are applied, one tank will cover 30.3 acres. If three pounds of chemical are required per acre, then 90 pounds of chemical are required per tankful.

$$\frac{500}{16.5} = 30.3 \text{ acres covered} \quad \text{then;} \quad 3 \text{ lbs. (gal.)} \times 30.3 = 90 \text{ lbs. (gal.) per tankful}$$

$$10 \text{ mph} \quad .50$$

Fertilizer Applicator Tips

Stream Jet NOZZLE for Injection

|  |  | PSI | CAPACITY ONE NOZZLE IN GPM | GPA  | | | | | |
|-----------------------------------------------------------------------------------|-----------------------------------------------------------------------------------|------|-------------------------------------|-----------------------------------------------------------------------------------------|----------|----------|-----------|-----------|-----------|
| | | | | 4 MPH | 6 MPH | 8 MPH | 10 MPH | 12 MPH | 14 MPH |
| H1/4U-SS0004 TP0004-SS | 10 | 0.20 | 9.9 | 6.6 | 5.0 | 4.0 | 3.3 | 2.8 | 2.5 |
| | 20 | 0.28 | 13.9 | 9.2 | 6.9 | 5.5 | 4.6 | 4.0 | 3.5 |
| | 30 | 0.35 | 17.3 | 11.6 | 8.7 | 6.9 | 5.8 | 5.0 | 4.3 |
| | 40 | 0.40 | 19.8 | 13.2 | 9.9 | 7.9 | 6.6 | 5.7 | 5.0 |
| H1/4U-SS0006 TP0006-SS | 10 | 0.30 | 14.9 | 9.9 | 7.4 | 5.9 | 5.0 | 4.2 | 3.7 |
| | 20 | 0.42 | 21 | 13.9 | 10.4 | 8.3 | 6.9 | 5.9 | 5.2 |
| | 30 | 0.52 | 26 | 17.2 | 12.9 | 10.3 | 8.6 | 7.4 | 6.4 |
| | 40 | 0.60 | 30 | 19.8 | 14.9 | 11.9 | 9.9 | 8.5 | 7.4 |
| H1/4U-SS0008 TP0008-SS | 10 | 0.40 | 19.8 | 13.2 | 9.9 | 7.9 | 6.6 | 5.7 | 5.0 |
| | 20 | 0.57 | 28 | 18.8 | 14.1 | 11.3 | 9.4 | 8.1 | 7.1 |
| | 30 | 0.69 | 34 | 23 | 17.1 | 13.7 | 11.4 | 9.8 | 8.5 |
| | 40 | 0.80 | 40 | 26 | 19.8 | 15.8 | 13.2 | 11.3 | 9.9 |
| H1/4U-SS0010 TP0010-SS | 10 | 0.50 | 25 | 16.5 | 12.4 | 9.9 | 8.3 | 7.1 | 6.2 |
| | 20 | 0.71 | 35 | 23 | 17.6 | 14.1 | 11.7 | 10.0 | 8.8 |
| | 30 | 0.87 | 43 | 29 | 22 | 17.2 | 14.4 | 12.3 | 10.8 |
| | 40 | 1.00 | 50 | 33 | 25 | 19.8 | 16.5 | 14.1 | 12.4 |
| H1/4U-SS0015 TP0015-SS | 10 | 0.75 | 37 | 25 | 19 | 14.9 | 12.4 | 10.6 | 9.3 |
| | 20 | 1.06 | 52 | 35 | 26 | 21 | 17.5 | 15.0 | 13.1 |
| | 30 | 1.30 | 64 | 43 | 32 | 26 | 21 | 18.4 | 16.1 |
| | 40 | 1.50 | 74 | 50 | 37 | 30 | 25 | 21 | 18.6 |
| H1/4U-SS0020 TP0020-SS | 10 | 1.00 | 50 | 33 | 25 | 19.8 | 16.5 | 14.1 | 12.4 |
| | 20 | 1.41 | 70 | 47 | 35 | 28 | 23 | 19.9 | 17.4 |
| | 30 | 1.73 | 86 | 57 | 43 | 34 | 29 | 24 | 21 |
| | 40 | 2.00 | 99 | 66 | 50 | 40 | 33 | 28 | 25 |
| H1/4U-SS0030 TP0030-SS | 10 | 1.50 | 74 | 50 | 37 | 30 | 25 | 21 | 18.6 |
| | 20 | 2.12 | 105 | 70 | 52 | 42 | 35 | 30 | 26 |
| | 30 | 2.60 | 129 | 86 | 64 | 51 | 43 | 37 | 32 |
| | 40 | 3.00 | 149 | 99 | 74 | 59 | 50 | 42 | 37 |
| H1/4U-SS0040 TP0040-SS | 10 | 2.00 | 99 | 66 | 50 | 40 | 33 | 28 | 25 |
| | 20 | 2.83 | 140 | 93 | 70 | 56 | 47 | 40 | 35 |
| | 30 | 3.46 | 171 | 114 | 86 | 69 | 57 | 49 | 43 |
| | 40 | 4.00 | 198 | 132 | 99 | 79 | 66 | 57 | 50 |
| H1/4U-SS0050 | 10 | 2.50 | 124 | 83 | 62 | 50 | 41 | 35 | 31 |
| | 20 | 3.54 | 175 | 117 | 88 | 70 | 58 | 50 | 44 |
| | 30 | 4.33 | 214 | 143 | 107 | 86 | 71 | 61 | 54 |
| | 40 | 5.00 | 248 | 165 | 124 | 99 | 83 | 71 | 62 |
| H1/4U-SS0060 | 10 | 3.00 | 149 | 99 | 74 | 59 | 50 | 42 | 37 |
| | 20 | 4.24 | 210 | 140 | 105 | 84 | 70 | 60 | 52 |
| | 30 | 5.20 | 257 | 172 | 129 | 103 | 86 | 74 | 64 |
| | 40 | 6.00 | 297 | 198 | 149 | 119 | 99 | 85 | 74 |

To determine GPA for solutions other than water, determine the weight per gallon or specific gravity and use the following conversion table.

| Weight per Gallon | Specific Gravity | Multiply By |
|-------------------|------------------|-------------|
| 7.0 lbs. | .84 | 1.09 |
| 8.0 lbs. | .96 | 1.02 |
| 8.34 lbs. (water) | 1.00 | 1.00 |
| 9.0 lbs. | 1.08 | .96 |
| 10.0 lbs. | 1.20 | .91 |
| 11.0 lbs. | 1.32 | .87 |
| 12.0 lbs. | 1.44 | .83 |

DISCONTINUED 6/2021

DISCONTINUED 6/2021

FERTILIZER APPLICATOR CHECKLIST:

Downtime caused by field breakdowns is costly and time consuming. Many breakdowns can be eliminated by periodic equipment maintenance. By spending time reviewing this checklist before seasonal fertilizer application time and following proper after season care, you can save time and money later.



WARNING: To Prevent Serious Injury Or Death

- Keep hands, feet, and loose clothing away from rotating parts.
- Wear protective clothing recommended by your chemical and fertilizer manufacturer when working with chemicals.

Check Before Going To The Field :

1. NOZZLES or KNIVES

Check tip or knife for excessive wear. Check nozzle spacing by starting at center and working outwards. Check that liquid comes out of each nozzle.

2. HOSES

Check all hoses for worn or soft spots. Be sure all hose clamps are tightened and hoses are not kinked or pinched. Check for leakage in any lines.

4. CONTROLS

Check for leakage, plugging, or wear on all valves, fittings, etc. Clean off any build up of foreign material.

5. PUMP

Check to be sure pump turns freely.

6. FRAME

Be sure all bolts are tightened.

7. LUBRICATE MACHINE

Grease all zerks every 10 hours.

8. REPLACEMENT PARTS

Replace all worn or damaged parts.

After Season Care:

NOTE: It is important to wear proper safety equipment when cleaning the applicator. See your chemical or fertilizer package for this information.

1. After applying chemicals, run water mixed with cleaners through tank, pump, filters, and all hose hookups.
2. When cleaned, tank should have all openings closed or covered to keep dirt from entering.
3. Pump should be flushed with soluble oil and pump ports plugged to keep out moisture and air.
4. Wash the machine using a pressure washer to remove all debris to prevent corrosion.
5. Lubricate all grease zerks.
6. Dispose of all unused chemicals or solutions in a proper and ecologically sound manner.
6. Water rinse and dry tips before storing.

NOTE: DEMCO does not and will not make any recommendations concerning application of various chemicals or solutions. These recommendations relate to either amount or procedure of materials applied. If you have any questions regarding application of certain chemicals or solutions, contact your chemical supplier and follow chemical manufacturer recommendations.

DEMCO

4010 320th St., Boyden, IA. 51234

Phone: (712) 725-2311

Fax: (712) 725-2380

Toll Free: 1-800-54DEMCO (1-800-543-3626)

Demco warranty policies, operator manuals, and product registration
can be found online:

www.demco-products.com

