

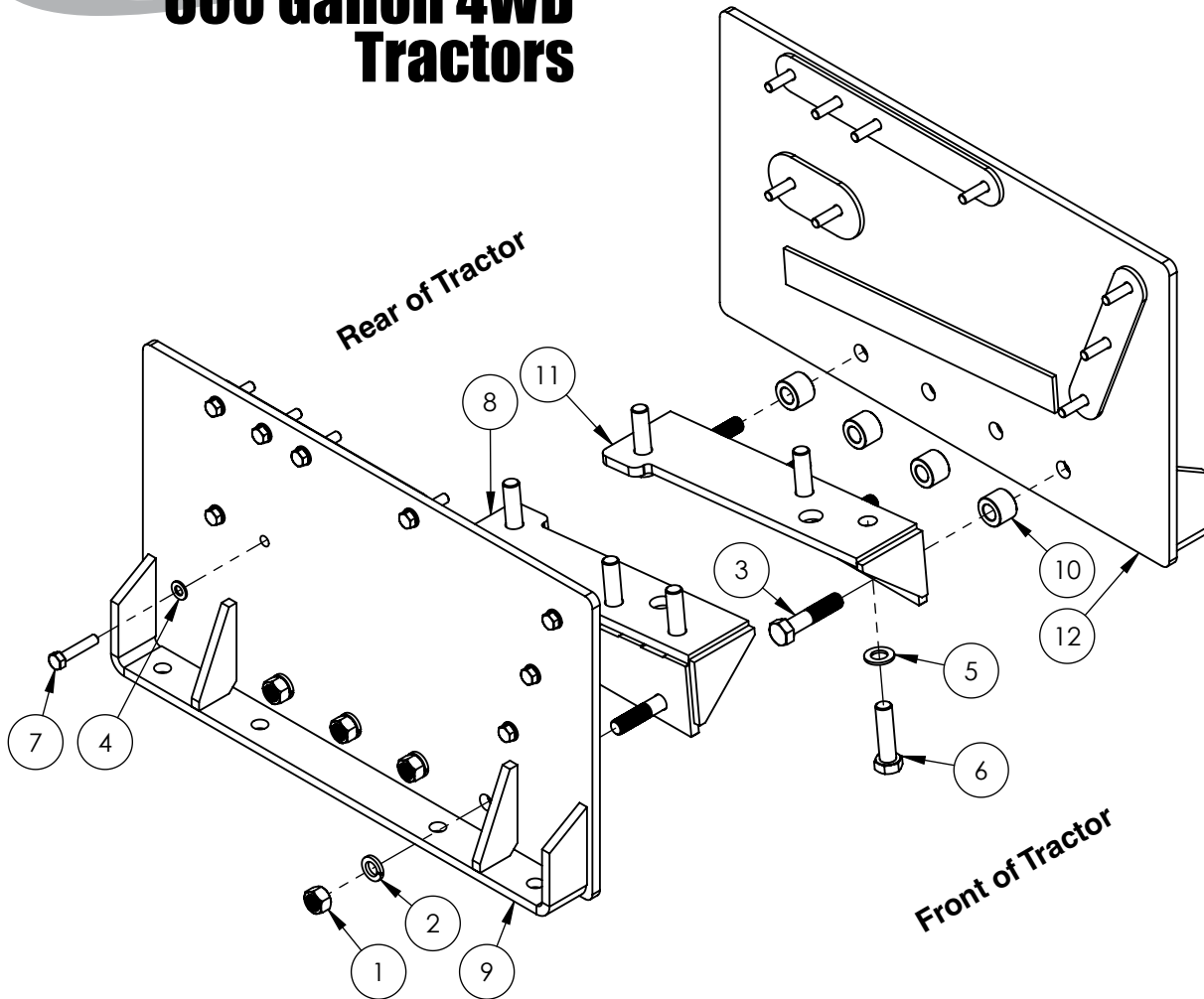
# Demco

## QUICK TACH

### 600 Gallon 4WD Tractors

10-14  
AC20096,rev1

**CASE IH**  
STEIGER -  
335



**ASSEMBLY  
REPLACEMENT PARTS**

REF. PART NO.	NO.	QTY.	DESCRIPTION
1.	00253	8	Nut, 3/4" Hex
2.	00254	8	Washer, 3/4" Lock
3.	01335	8	Bolt, 3/4NC x 3.50 Gr5
4.	07432	18	Washer, 12MM
5.	07613	6	Washer, 20MM
6.	11745	6	Bolt, 20MM-2.50 x 75MM Gr10.9
7.	14513	18	Bolt, 12MM-1.75 x 60MM Gr10.9
8.	14518-35	1	Right Baseplate Support Bracket
9.	14519-35	1	Right Baseplate f/ Case Steiger QT600
10.	14523-35	8	Spacer Bushing
11.	14531-35	1	Left Baseplate Support Bracket
12.	14532-35	1	Left Baseplate f/ Case Steiger QT600

**BOLT TORQUE SPECIFICATIONS**

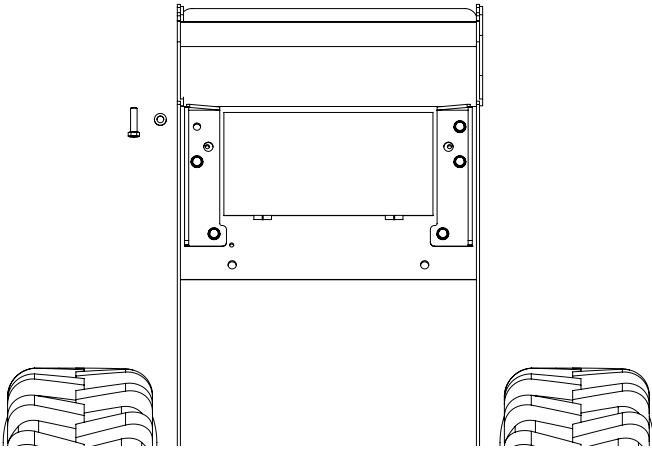
STANDARD BOLTS:			METRIC BOLTS:	
Size	Grade	Torque	Size	Torque
3/4"	5	290 ft/lbs.	12mm	106 ft/lbs.
			20mm	515 ft/lbs.

**READ complete manual CAREFULLY  
BEFORE attempting operation.**

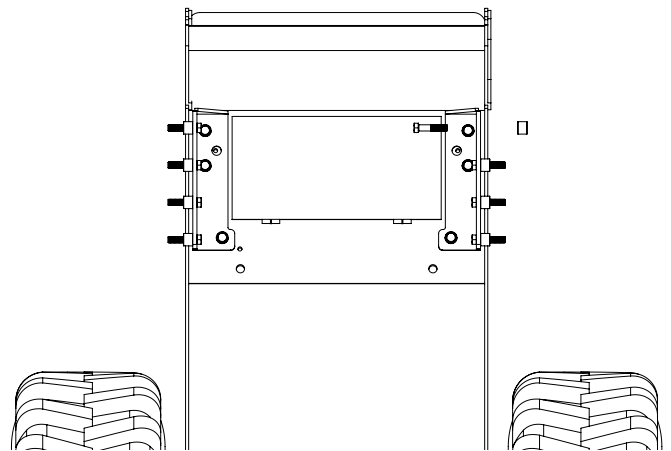
Please order replacement parts by **PART NO.** and **DESCRIPTION.**

## Baseplate Install Instructions

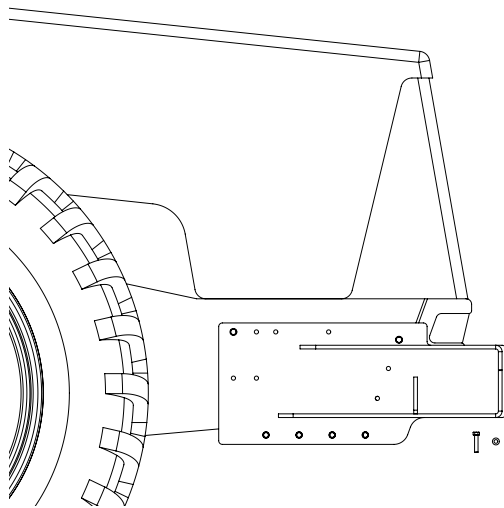
**Preparation:** Remove any loader/blade brackets from the tractor.



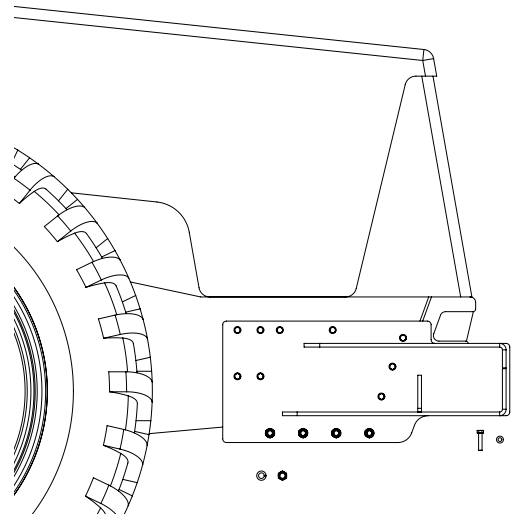
1. Install Right & Left Baseplate Support Brackets using 20mm x 75mm bolts with 20mm flat washers. Leave Support Brackets loose for alignment and do not tighten bolts.



2. Install Spacer Bushings using 3/4" x 3.50" bolts.



3. Install Right Baseplate using 12mm x 60mm bolts with 12mm flat washers. Tighten 12mm bolts to specified torque on front cover of instructions. Repeat for the opposite side.



4. Tighten 20mm bolts to specified torque (installed in step 1) before installing 3/4" nuts with lock washers on the 3/4" bolts (installed in step 2). Tighten 3/4" bolts to specified torque.