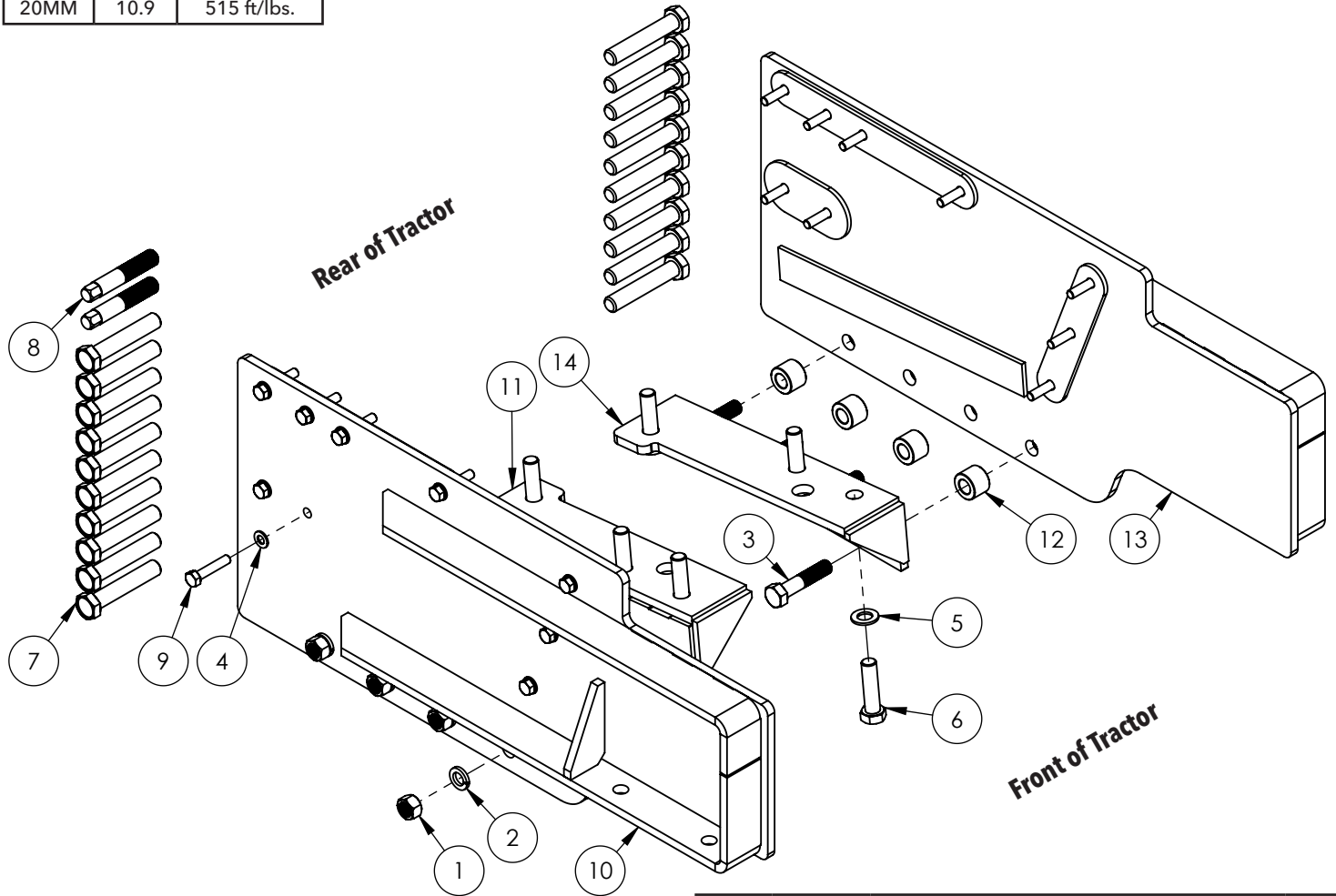


READ complete manual CAREFULLY BEFORE attempting operation.

BOLT TORQUE SPECIFICATIONS		
Size	Grade	Torque
3/4"	5	290 ft/lbs.
12MM	10.9	106ft/lbs.
20MM	10.9	515 ft/lbs.

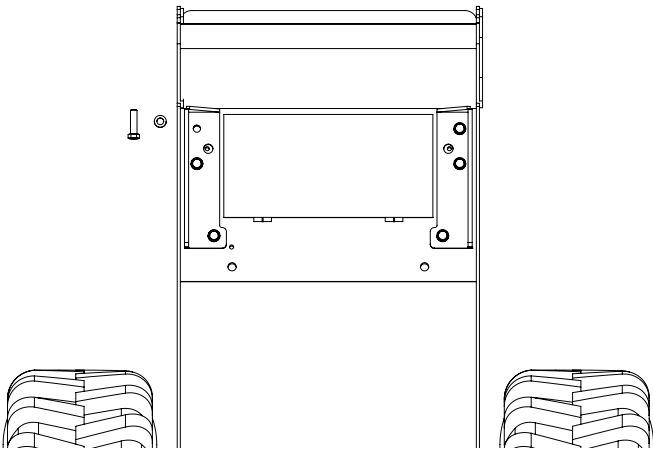


ITEM	PART #	DESCRIPTION	QTY.
1.	00253	Nut, 3/4" Hex	8
2.	00254	Washer, 3/4" Lock	8
3.	01335	Bolt, 3/4NC x 3.50 Gr5	8
4.	07432	Washer, 12MM	18
5.	07613	Washer, 20MM	6
6.	11745	Bolt, 20MM-2.50 x 75MM Gr10.9	6
7.	13222	Bolt, 22MM-2.50 x 120MM Gr10.9	20
8.	13919-95	Starter Stud	2
9.	14513	Bolt, 12MM-1.75 x 60MM Gr10.9	18
10.	14517-35	Right Baseplate f/ Case Steiger SQ1200	1
11.	14518-35	Right Baseplate Support Bracket	1
12.	14523-35	Spacer Bushing	8
13.	14530-35	Left Baseplate f/ Case Steiger SQ1200	1
14.	14531-35	Left Baseplate Support Bracket	1

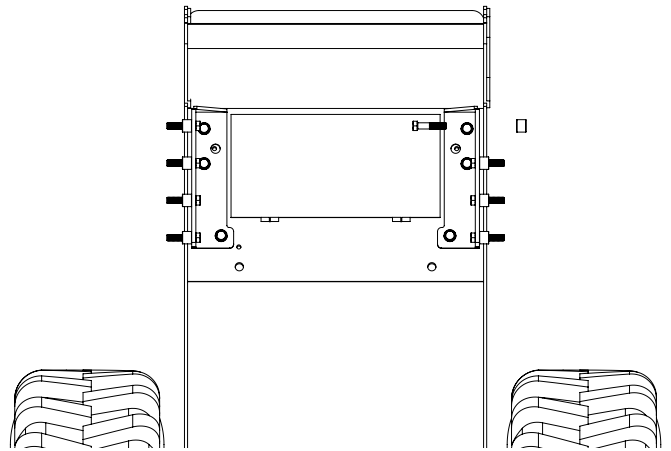
Please order replacement parts by PART NO. and DESCRIPTION.

## Baseplate Install Instructions

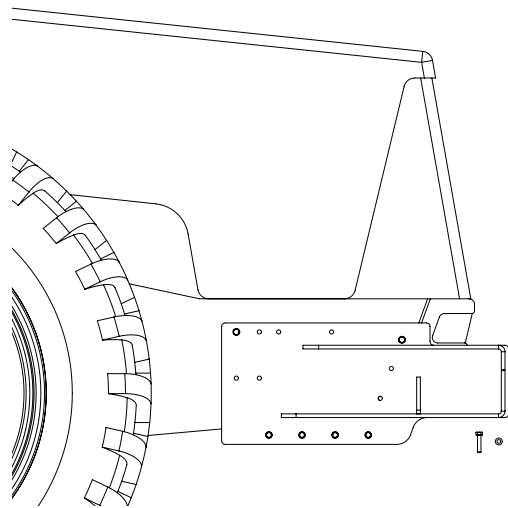
**Preparation:** Remove any loader/blade brackets from the tractor. The tractors duals must be set to 120" wheel spacing.



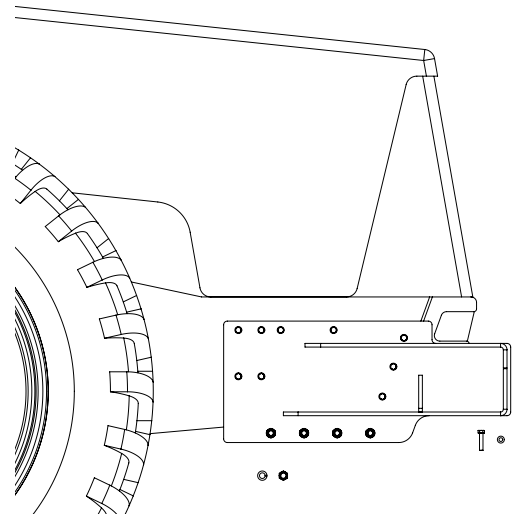
1. Install Right & Left Baseplate Support Brackets using 20mm x 75mm bolts with 20mm flat washers. Leave Support Brackets loose for alignment and do not tighten bolts.



2. Install Spacer Bushings using 3/4" x 3.50" bolts.



3. Install Right Baseplate using 12mm x 60mm bolts with 12mm flat washers. Tighten 12mm bolts to specified torque on front cover of instructions. Repeat for the opposite side.



4. Tighten 20mm bolts to specified torque (installed in step 1) before installing 3/4" nuts with lock washers on the 3/4" bolts (installed in step 2). Tighten 3/4" bolts to specified torque.