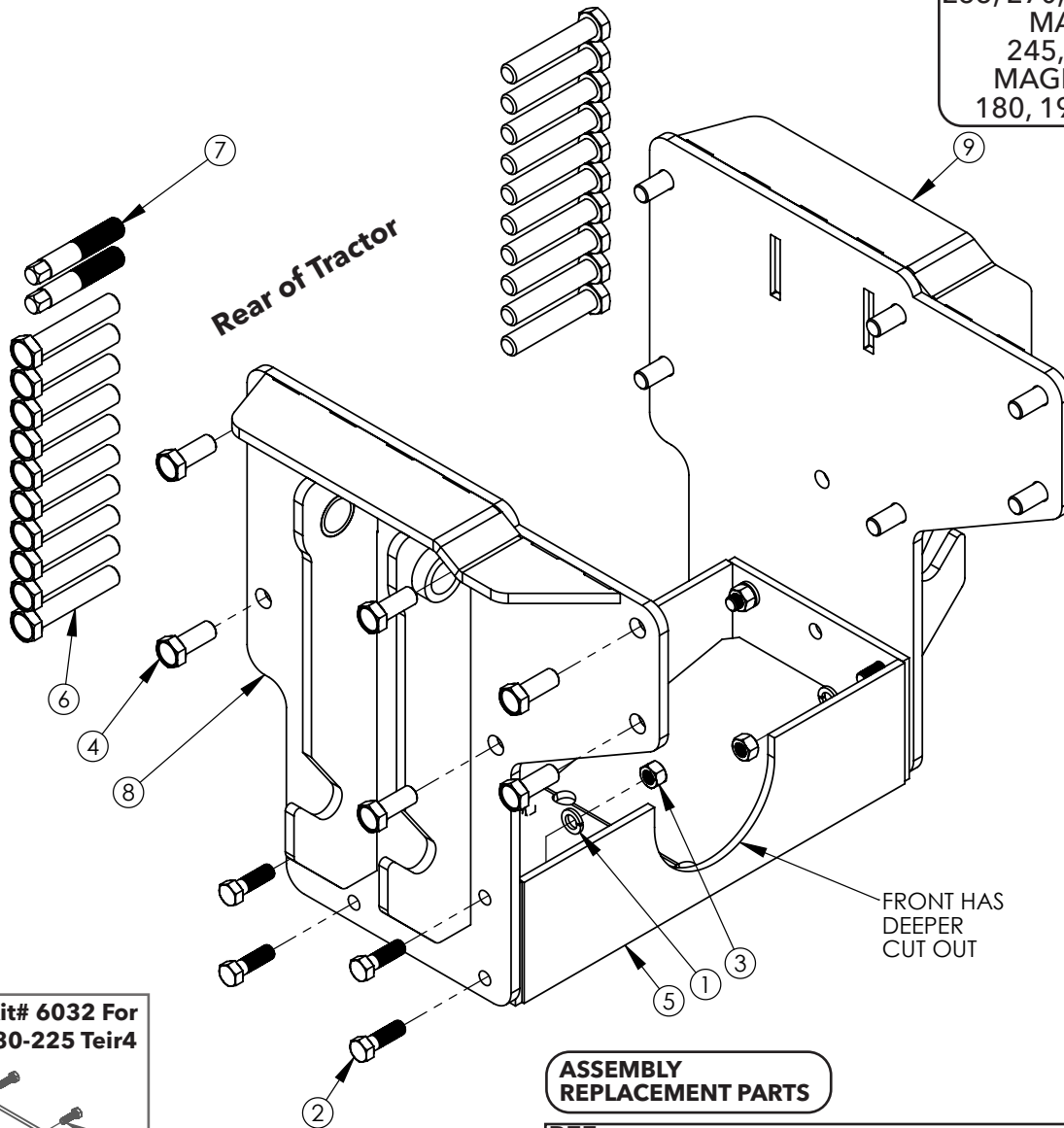


# DEMCO

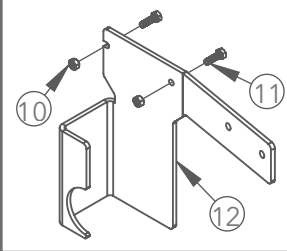
## SIDEQUEST®

03-12  
AC20078,rev2

**CASE IH**  
**MX MAGNUM**  
 180, 200, 210, 215,  
 220, 230, 240, 245,  
 255, 270, 275, 285, 305  
**MAGNUM**  
 245, 275, 305  
**MAGNUM Teir4**  
 180, 190, 210, 225



Optional: Kit# 6032 For  
Magnum 180-225 Teir4



### BOLT TORQUE SPECIFICATIONS

STANDARD BOLTS:			METRIC BOLTS:	
Size	Grade	Torque	Size	Torque
5/16"	5	18 ft/lbs.	20mm	515 ft/lbs.
5/8"	5	150 ft/lbs.	22mm	702 ft/lbs.

**READ complete manual CAREFULLY BEFORE attempting operation.**

### ASSEMBLY REPLACEMENT PARTS

REF. NO.	PART NO.	QTY.	DESCRIPTION
1.	00248	8	Washer, 5/8" Lock
2.	00290	8	Bolt, 5/8" x 2.00" Gr5 Hex Head
3.	00291	8	Nut, 5/8" Hex
4.	03840	12	Bolt, 20MM-2.50 x 50MM Gr10.9
5.	09630-72	1	Spacer Assembly
6.	13222	20	Bolt, 22MM-2.50 x 120MM Gr10.9
7.	13919-95	2	Starter Stud
8.	13959-72	1	Left Baseplate For CASE IH Magnum
9.	13960-72	1	Right Baseplate For CASE IH Magnum
10.	02802	2	Nut, 5/16"-16NC Nylon Lock (Gr. 5)
11.	02990	2	Bolt, 5/16"-16NC x 1.00" Hex (Gr. 5)
12.	14417-35	1	Magnum Fuel Filter Step Bracket

Please order replacement parts by **PART NO.** and **DESCRIPTION.**

DEMCO • 4010 320th Street • P.O. Box 189 • Boyden, IA 51234

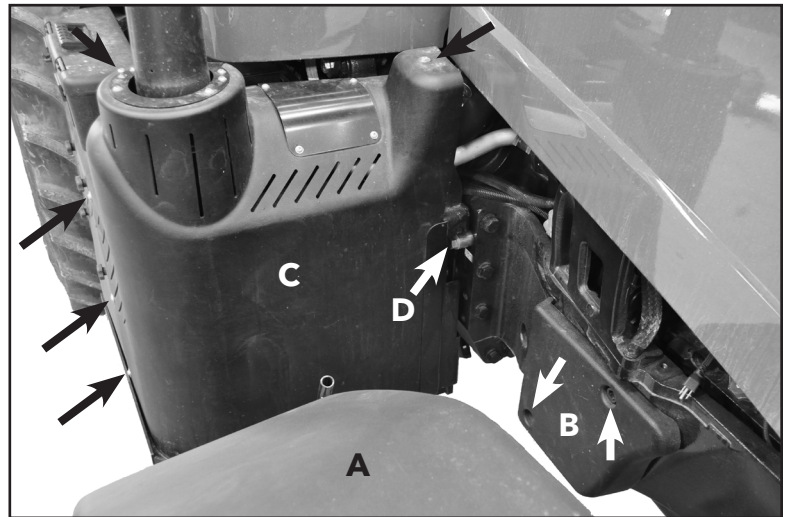
PH: (712) 725-2311 • Toll Free: 1-800-543-3626 • FAX: (712) 725-2380 or 1-800-845-6420

www.demco-products.com

CASE Magnum 180-225 Teir4  
Installation Breakdown

**Right Side - Figure 1**

1. Remove Fender (A)
2. Remove Fender Bumper (B)
3. Remove Muffler Housing (C)  
(black arrows show bolt locations)
4. Remove Negative Terminal (D)
5. Mount Baseplate
6. Start all bolts but keep bolts loose



**Right Side** (Fig. 1)

**Left Side - Figure 2**

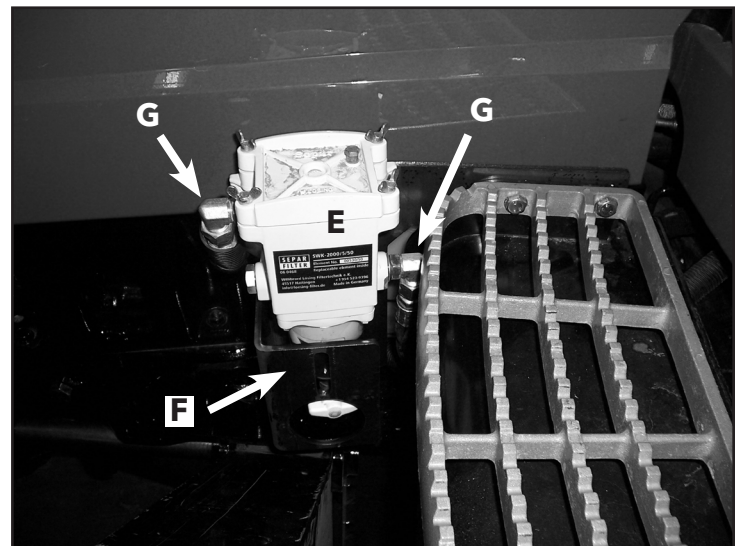
7. Remove Fender (A)
8. Remove Fender Bumper (B)
9. Relocate Fuel Filter, if equipped (E)
  - a. Remove Filter from Stock Filter Bracket
  - b. Attach DEMCO Filter Bracket (F) to Tractor step using existing step hardware (white arrows)
  - c. Attach Fuel Filter (E) to Filter Bracket (F) (Fig.3)
10. Mount Baseplate
11. Start all Baseplate bolts but keep bolts loose



**Left Side** (Fig. 2)

**Spacer Assembly**

12. Attach Spacer Assembly  
**NOTE:** Front of Spacer Assembly has a deeper cut out
13. Tighten all bolts torquing to specification



**NOTE:** Be sure to loosen and rotate hose fittings (G) so hose do not kink.

**Relocated Fuel Filter** (Fig. 3)