

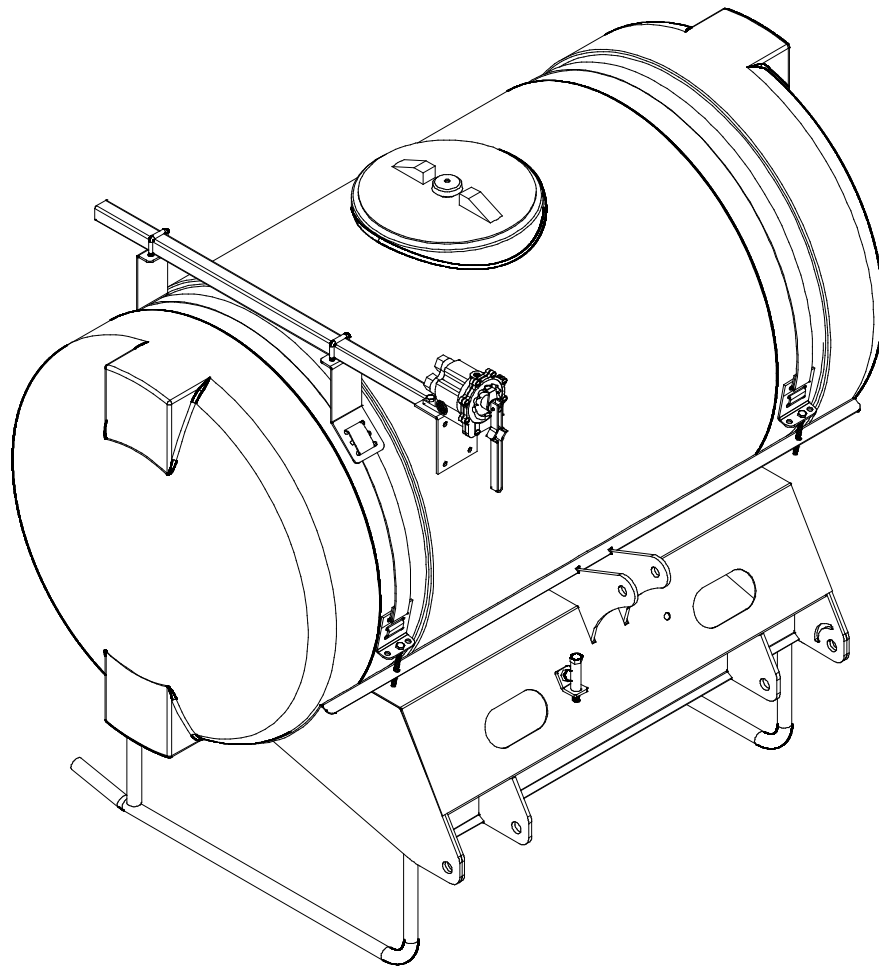


Doing Our Best to Provide You the Best

AC20047, Rev 6
12/17

SPRAYERS

Rear Mount 150 & 200 Gallon



OPERATOR MANUAL

INTRODUCTION

Thank you for purchasing a Demco sprayer. We feel you have made a wise choice and hope you are completely satisfied with your new piece of equipment.

If you have any questions regarding the applications of certain solutions or chemicals, contact your chemical supplier and follow chemical manufacturer recommendations as well as all licensing and use restrictions or regulations.

WARRANTY POLICY, OPERATOR MANUALS, PARTS MANUALS & REGISTRATION

Go online to www.demco-products.com to review Demco warranty policies, operator manuals and register your Demco product.



WARNING: TO AVOID PERSONAL INJURY OR DEATH, OBSERVE FOLLOWING INSTRUCTIONS:

- Chemicals are dangerous. Know exactly what you’re going to do and what is going to happen before attempting to work with these products. Improper selection or use can injure people, animals, plants and soil.**
- Always wear protective clothing such as coveralls, goggles and gloves when working with chemicals or the sprayer.**
- Be sure to dispose of all unused chemicals or solutions in a proper and ecologically sound manner.**

GENERAL INFORMATION

- 1. Unless otherwise specified, high-strength (grade5) (3 radial-line head markings) hex head bolts are used throughout assembly of this piece of equipment.
- 2. Whenever terms **“LEFT”** and **“RIGHT”** are used in this manual it means from a position behind sprayer and facing forward.
- 3. When placing a parts order, refer to this manual for proper part numbers and place order by **PART NO. and DESCRIPTION.**

TABLE OF CONTENTS

General Information..... 2

Safety Information3-10

Bolt Torque..... 10

Tank Installation..... 11

Rear Mount Single Section Plumbing..... 12-13

Rear Mount Three Section Plumbing..... 14-15

Centrifugal Pump Plumbing 16

Optional Single Section Electric Solenoid Controls Parts Breakdown w/ Parts List..... 17

Optional Three Section Electric Solenoid Controls Parts Breakdown w/ Parts List..... 17

Valve Mounting and Location..... 18

Rear Mount to Tractor Three Point 19

Rear Mount 150 and 200 Parts Breakdown and List..... 20

C7560D or XL7560D Roller Pump Breakdown 21

Direct-O-Valve Breakdown..... 21

Tee Valve Breakdown..... 21

DB1 Boom Mounting Breakdown and Boom Jet Nozzle Mounting..... 22

Sprayer Checklist..... 23

TAKE NOTE! THIS SAFETY ALERT SYMBOL FOUND THROUGHOUT THIS MANUAL IS USED TO CALL YOUR ATTENTION TO INSTRUCTIONS INVOLVING YOUR PERSONAL SAFETY AND SAFETY OF OTHERS. FAILURE TO FOLLOW THESE INSTRUCTIONS CAN RESULT IN INJURY OR DEATH!



THIS SYMBOL MEANS
ATTENTION
BECOME ALERT
YOUR SAFETY IS INVOLVED!

SIGNAL WORDS:

This manual uses the following signal words--**DANGER**, **WARNING**, and **CAUTION**-- with safety messages. The appropriate signal word has been selected using the following guidelines.

DANGER:

Indicates an imminently hazardous situation that, if not avoided, will result in death or serious injury. This signal word is to be limited to most extreme situations typically for machine components which, for functional purposes, cannot be guarded.

WARNING:

Indicates a potentially hazardous situation that, if not avoided, could result in death or serious injury or death, and includes hazards that are exposed when guards are removed. It may also be used to alert against unsafe practices.

CAUTION:

Indicates a potentially hazardous situation that, if not avoided, may result in minor or moderate injury. It may also be used to alert against unsafe practices.

If you have questions not answered in this manual, require additional copies, or if your manual is damaged, please contact your dealer or DEMCO, 4010 320th Street, Boyden, IA 51234
ph: (712) 725-2311 or Toll Free: 1-800-543-3626 Fax: (712) 725-2380 or 1-800-845-6420
<http://www.demco-products.com>



SAFETY...YOU CAN LIVE WITH IT



EQUIPMENT SAFETY GUIDELINES

Every year many accidents occur which could have been avoided by a few seconds of thought and a more careful approach to handling equipment. You, the operator, can avoid many accidents by observing the following precautions in this section. To avoid personal injury, study the following precautions and insist those working with you, or you yourself, follow them.

In order to provide a better view, certain illustrations in this manual may show an assembly with a safety shield removed. However, equipment should never be operated in this condition. Keep all shields in place. If shield removal becomes necessary for repairs, replace shield prior to use.

Replace any caution, warning, danger or instruction safety decal that is not readable or is missing. Location of such decals is indicated in this booklet.

Do not attempt to operate this sprayer under the influence of alcohol or drugs.

Review safety instructions with all users annually.

Operator should be a responsible adult. **DO NOT ALLOW PERSONS TO OPERATE OR ASSEMBLE THIS UNIT UNTIL THEY HAVE DEVELOPED A THOROUGH UNDERSTANDING OF SAFETY PRECAUTIONS AND HOW IT WORKS.**

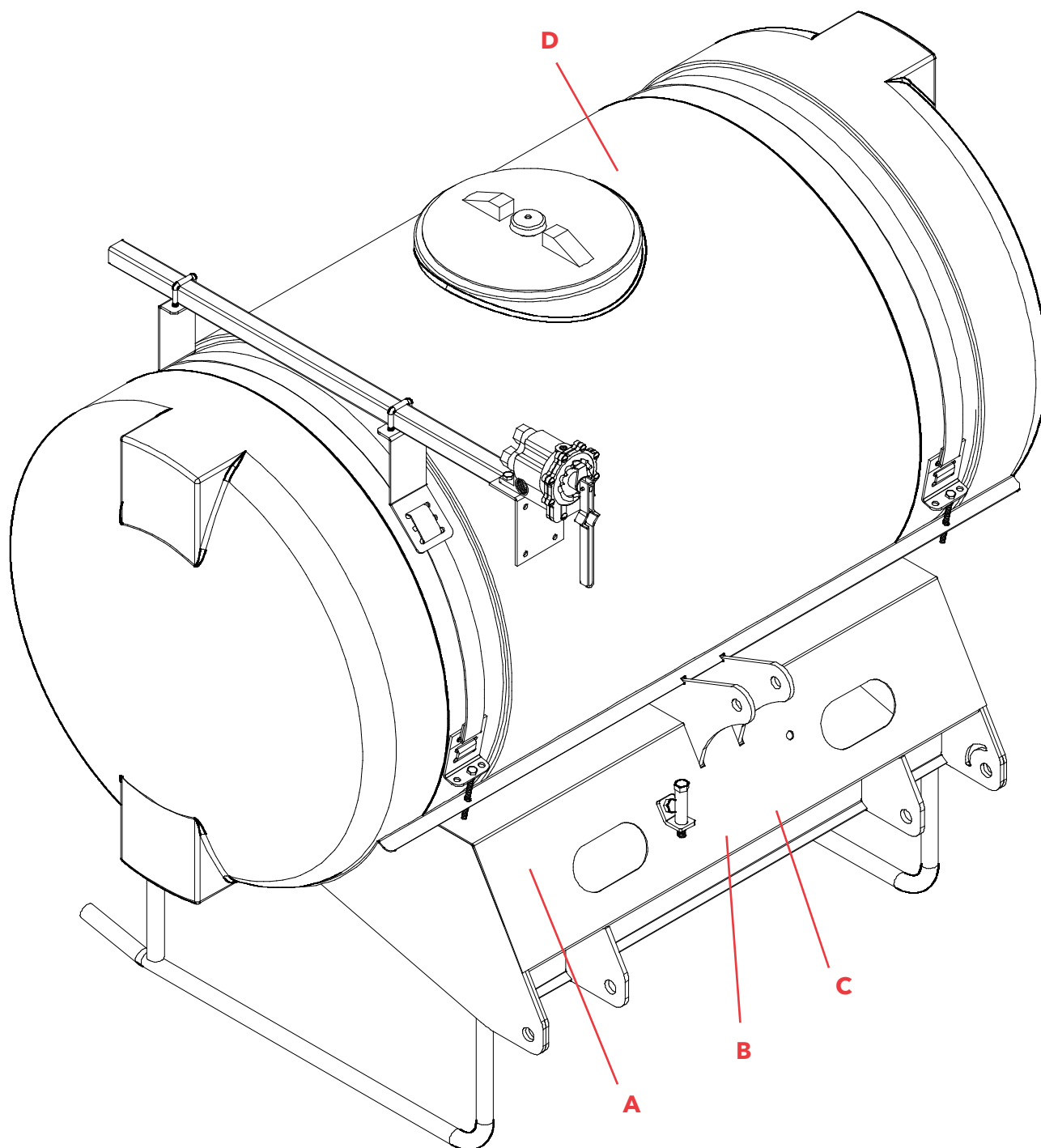
To prevent injury or death, use a tractor equipped with a roll over protective system (ROPS). Do not paint over, remove, or deface any safety signs or warning decals on your sprayer. Observe all safety signs and practice instructions on them.

Never exceed limits of a piece of machinery. If its ability to do a job, or to do so safely is in question **DON'T TRY IT.**



LIGHTING AND MARKING

It is the responsibility of customer to know lighting and marking requirements of local highway authorities and to install and maintain sprayer to provide compliance with regulations. Add extra lights when transporting at night or during periods of limited visibility.



DECAL PARTS LIST

ITEM	PART #	DESCRIPTION	QTY
A	AA21004	SMALL DEMCO	1
B	AB21001	WARNING: DO NOT RIDE....	1
C	AB21002	WARNING: DO NOT STORE....	1
D	AB21014	WARNING: REFER TO CHEMICAL SUPPLIER....	1
Please order replacement parts by PART NO. and DESCRIPTION			



SAFETY SIGN CARE

- Keep safety signs clean and legible at all times.
- Replace safety signs that are missing or have become illegible.
- Replacement parts that displayed a safety sign should also display current sign.
- Safety signs are available from your distributor, dealer parts department, or factory.

How to install safety signs:

- Be sure that installation area is clean and dry.
- Decide on exact position before you remove backing paper.
- Remove smallest portion of split backing paper.
- Align decal over specified area and carefully press small portion with exposed sticky backing in place.
- Slowly peel back remaining paper and carefully smooth decal into place.
- Air pockets can be pierced with a pin and smoothed out using piece of backing paper.



BEFORE OPERATION

- Carefully study and understand this manual.
- Do not wear loose-fitting clothing which may catch in moving parts.
- Always wear protective clothing and substantial shoes.
- It is recommended that suitable protective hearing and eye protection be worn.
- The operator may come in contact with certain materials which may require specific safety equipment relative to handling of such materials. (Examples: extremely dusty, molds, fungus, bulk fertilizers, etc.)
- Give sprayer a visual inspection for any loose bolts, worn parts, or cracked welds, and make necessary repairs. Follow maintenance safety instructions included in this manual.
- Be sure there are no tools lying on or in equipment
- Do not use sprayer until you are sure that area is clear, especially around children and animals.
- Don't hurry learning process or take sprayer for granted. Ease into it and become familiar with your new equipment.
- Practice operation of your equipment and its attachments. Completely familiarize yourself and other operators with its operation before using.
- Use a tractor equipped with Roll Over Protection System (ROPS) and fasten your seat belt prior to starting engine.
- Manufacturer does not recommend usage of a tractor with ROPS removed.

- Move tractor wheels to widest recommended settings to increase stability.
- Do not allow anyone to stand between tongue or hitch and towing vehicle when backing up to sprayer.



DURING OPERATION

- Beware of bystanders, **PARTICULARLY CHILDREN!** Always look around to make sure that it is safe to start engine of towing vehicle or move sprayer. This is particularly important with higher noise levels and quiet cabs, as you may not hear people shouting.
- **NO PASSENGERS ALLOWED**- Do not carry passengers anywhere on or in the tractor or sprayer.
- Keep hands and clothing clear of moving parts.
- Do not clean, lubricate, or adjust your sprayer while it is moving.
- When halting operation, even periodically, set tractor or towing vehicles brakes, disengage PTO, shut off engine, and **remove ignition key**.
- Be especially observant of operating area and terrain- watch for holes, rocks, or other hidden hazards. Always inspect area prior to operation.
 - DO NOT operate near edge of drop-offs or banks.
 - DO NOT operate on steep slopes as overturn may result.
 - Operate up and down (not across) intermediate slopes. Avoid sudden starts and stops.
- Pick the most level possible route when transporting across fields. Avoid edges of ditches, gullies, and steep hillsides.
- Be extra careful when working on inclines.
- Periodically clear sprayer of brush, twigs, or other materials to prevent buildup of dry combustible materials.
- Maneuver tractor or towing vehicle at safe speeds.
- Avoid overhead wires. Contact with overhead lines could cause serious injury or death.
- Avoid loose gravel, rocks, and holes; they can be dangerous for sprayer operation or movement.
- Allow for unit length when making turns.
- Do not walk or work under raised components or attachments unless securely supported.
- Keep all bystanders, pets, and livestock clear of work area.
- Never stand alongside of unit with engine running or attempt to start engine and/or operate machine while standing alongside of unit.
- Never leave running equipment attachments unattended.
- As a precaution, always recheck hardware on equipment following every 100 hours of operation. Correct all problems. Follow maintenance safety procedures.



FOLLOWING OPERATION

- Following operation, or when unhitching, stop tractor or towing vehicle, set brakes, disengage PTO and all power drives, shut off engine and **remove ignition key**.
- Store unit in an area away from human activity.
- Do not park equipment where it will be exposed to livestock for long periods of time. Damage and livestock injury could result.
- Do not permit children to play on or around stored unit.
- Make sure all parked machines are on a hard, level surface and engage all safety devices.



HIGHWAY AND TRANSPORT OPERATIONS

- **SAFETY CHAINS:** If equipment is going to be transported on a public highway, Always follow state and local regulations regarding safety chains and auxiliary lighting. Be sure to check with local law enforcement agencies for your own particular regulations. If required safety chains should be obtained and installed. Only safety chains (not elastic or nylon/plastic tow straps) should be used to retain connection between towing and towed machines in event of separation of primary attaching system. Use a high strength, appropriately sized hitch pin with a mechanical retainer and attach safety chains. Criss cross chains under tongue and secure to draw bar cage, mounting loops, or bumper frame.
- Adopt safe driving practices:
 - Keep brake pedals latched together at all times. **NEVER USE INDEPENDENT BRAKING WITH MACHINE IN TOW, LOSS OF CONTROL AND/OR UPSET OF UNIT CAN RESULT.**
 - Always drive at a safe speed relative to local conditions and ensure that your speed is low enough for an emergency stop. Keep speed to a minimum.
 - Reduce speed prior to turns to avoid risk of overturning.
 - Always keep tractor or towing vehicle in gear to provide engine braking when going downhill. Do not coast.
 - Do not drink and drive!
- Comply with state and local laws governing highway safety and movement of farm machinery.
- Use approved accessory lighting flags and necessary warning devices to protect operators of other vehicles on highway during transport. Various safety lights and devices are available from your dealer.
- Use of flashing amber lights is acceptable in most localities. However, some localities prohibit their use. Local laws should be checked for all highway lighting and marking requirements.
- When driving a tractor and sprayer under 20 mph (40 kph) day or night, use flashing amber warning lights and a slow moving vehicle (SMV) identification emblem.
- Plan your route to avoid heavy traffic.
- Be a safe and courteous driver. Always yield to oncoming traffic in all situations, including narrow bridges, intersections, etc.
- Be observant of bridge loading ratings. Do not cross bridges rated lower than gross weight at which you are operating.

- Watch for obstructions overhead and side to side while transporting.
- Always operate equipment in a position to provide maximum visibility at all times. Make allowances for increased length and weight of sprayer when making turns, stopping, etc.



REMEMBER

Your best assurance against accidents is a careful and responsible operator. If there is any portion of this manual or function you do not understand, contact your local authorized dealer or manufacturer.



PERFORMING MAINTENANCE

- Good maintenance is your responsibility. Poor maintenance is an invitation to trouble.
- Make sure there is plenty of ventilation. Never operate engine of towing vehicle in a closed building. Exhaust fumes may cause asphyxiation.
- Before working on this machine, stop towing vehicle, set brakes, disengage PTO and all power drives, shut off engine and **remove ignition key**.
- Be certain all moving parts and attachments have come to a complete stop before attempting to perform maintenance.
- Always use a safety support and block wheels. Never use a jack to support machine.
- Always use proper tools or equipment for job at hand.
- Use extreme caution when making adjustments.
- Follow torque chart on page 10 in this manual when tightening bolts and nuts.
- Never use your hands to locate a hydraulic leak on attachments. Use a small piece of cardboard or wood. Hydraulic fluid escaping under pressure can penetrate skin.
- Openings in skin and minor cuts are susceptible to infection from hydraulic fluid.
Without immediate medical treatment, serious infection and reactions can occur.
- When disconnecting hydraulic lines, shut off hydraulic supply and relieve all hydraulic pressure.
- Replace **all shields** and **guards** after servicing and before moving.
- After servicing, be sure all tools, parts and service equipment are removed.
- Do not allow grease or oil to build up on any step or platform.
- When replacing bolts refer to owners manual.
- Refer to bolt torque **BOLT TORQUE SPECIFICATIONS** for head identification marking.

SAFETY

- Replace **all shields** and guards after servicing and before moving.
- After servicing, be sure all tools, parts and service equipment are removed.
- Do not allow grease or oil to build up on any step or platform.
- Never replace hex bolts with less than grade five bolts unless otherwise specified.
- Refer to bolt torque chart for head identification marking.
- Where replacement parts are necessary for periodic maintenance and servicing, genuine factory replacement parts must be used to restore your equipment to original specifications. The Manufacturer will not claim responsibility for use of unapproved parts and/or accessories and other damages as a result of their use.
- If equipment has been altered in any way from original design, the manufacturer does not accept any liability for injury or warranty.
- A fire extinguisher and first aid kit should be kept readily accessible while performing maintenance on this equipment



TORQUE SPECIFICATION

Torque figures indicated are valid for non-greased or non-oiled threads and heads unless otherwise specified. Therefore, do not grease or oil bolts or capscrews unless otherwise specified in this manual. When using locking elements, increase torque values by 5%.

* GRADE or CLASS value for bolts and capscrews are identified by their head markings.

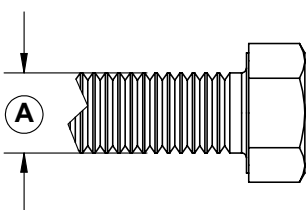
BOLT TORQUE DATA FOR STANDARD NUTS, BOLTS, AND CAPSCREWS.

Tighten all bolts to torques specified in chart unless otherwise noted. Check tightness of bolts periodically, using bolt chart as guide. Replace hardware with same grade bolt.

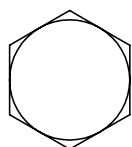
NOTE: Unless otherwise specified, high-strength Grade 5 hex bolts are used throughout assembly of equipment.

Bolt Torque for Standard bolts *						
"A"	GRADE 2		GRADE 5		GRADE 8	
	lb-ft	(N.m)	lb-ft	(N.m)	lb-ft	(N.m)
1/4"	6	(8)	9	(12)	12	(16)
5/16"	10	(13)	18	(25)	25	(35)
3/8"	20	(27)	30	(40)	45	(60)
7/16"	30	(40)	50	(70)	80	(110)
1/2"	45	(60)	75	(100)	115	(155)
9/16"	70	(95)	115	(155)	165	(220)
5/8"	95	(130)	150	(200)	225	(300)
3/4"	165	(225)	290	(390)	400	(540)
7/8"	170	(230)	420	(570)	650	(880)
1"	225	(300)	630	(850)	970	(1310)

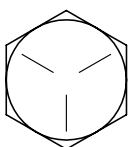
Bolt Torque for Metric bolts *						
"A"	CLASS 8.8		CLASS 9.8		CLASS 10.9	
	lb-ft	(N.m)	lb-ft	(N.m)	lb-ft	(N.m)
6	9	(13)	10	(14)	13	(17)
7	15	(21)	18	(24)	21	(29)
8	23	(31)	25	(34)	31	(42)
10	45	(61)	50	(68)	61	(83)
12	78	(106)	88	(118)	106	(144)
14	125	(169)	140	(189)	170	(230)
16	194	(263)	216	(293)	263	(357)
18	268	(363)	--	--	364	(493)
20	378	(513)	--	--	515	(689)
22	516	(699)	--	--	702	(952)
24	654	(886)	--	--	890	(1206)



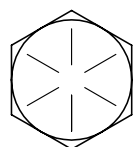
GRADE-2



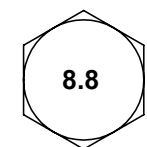
GRADE-5



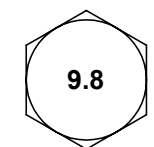
GRADE-8



CLASS 8.8



CLASS 9.8



CLASS 10.9



INSTALLING THE TANK AND CONTROL PANEL MOUNT

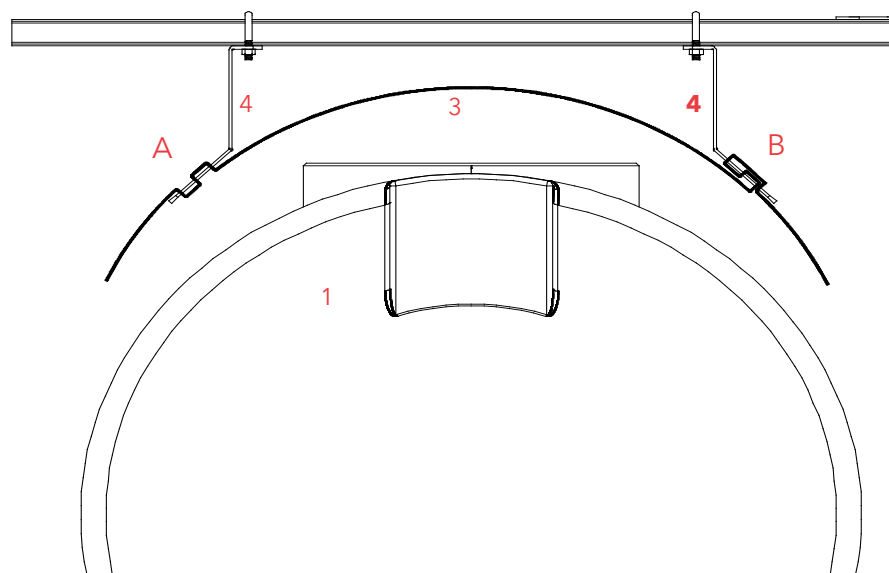
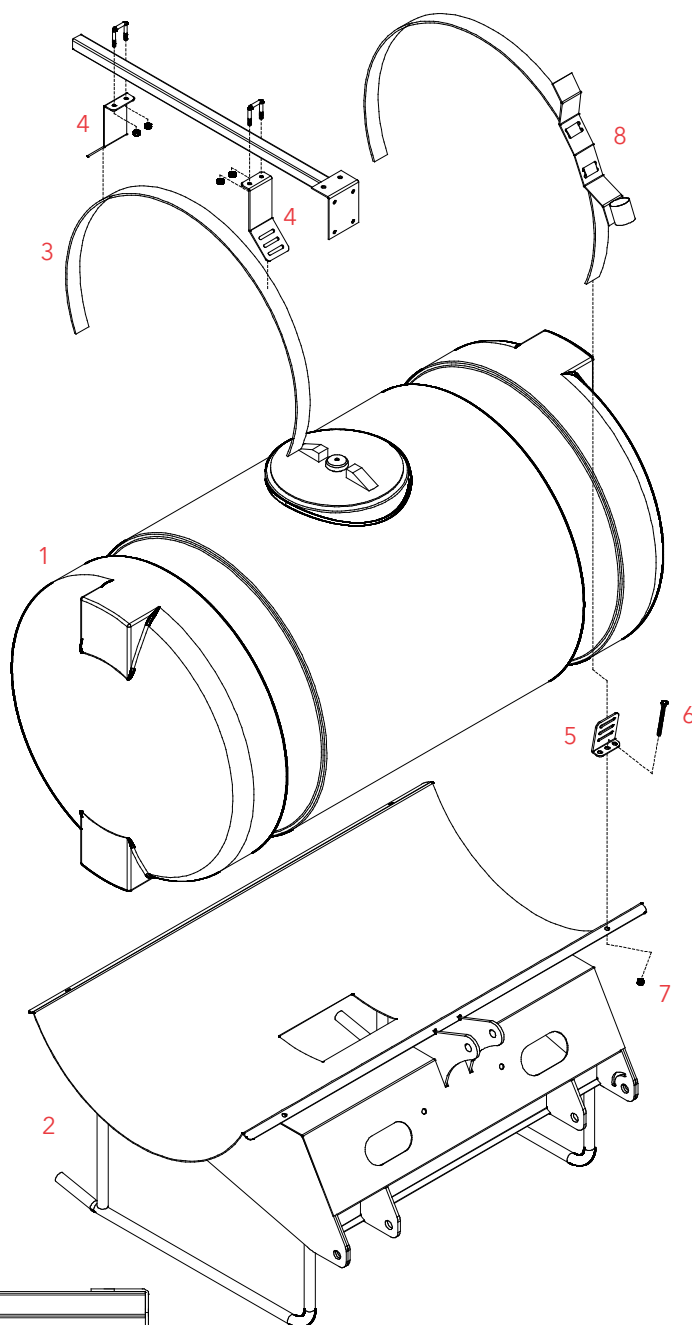
NOTE: The tank and frame in the drawing are a 200 gallon tank and frame. A 150 gallon tank and frame are assembled the same way. (See page 16 for part numbers.)

1. Set the tank (#1) into the frame (#2) making certain the tank is centered in the frame.

2. Weave strap (#3) through panel mounts (#4) as shown in views A and B. Panel mounts may be mounted on either side of tank. Be sure panel mounts are level.

3. Lay the saddle strap assemblies (#3) over the tank in the tank grooves. Weave strap through strap anchors (#5) as shown in view C. Place a 5/16" x 4" full threaded bolt (#6) through each hook on the strap and hold in place with a 5/16" locknut (#7). With the strap in place, adjust the strap through the buckle to get a snug fit. Now tighten down the locknuts.

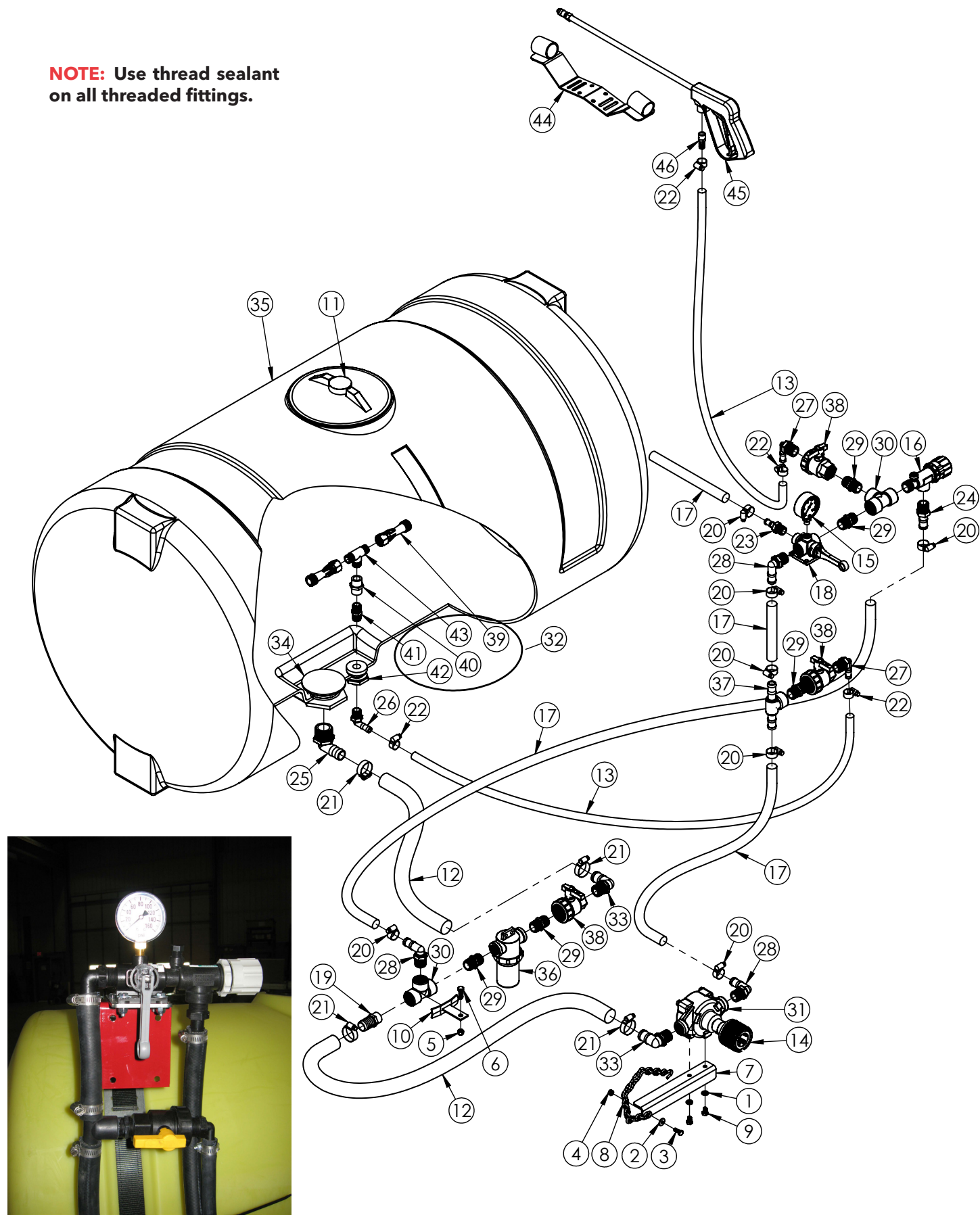
NOTE: If an optional handgun has been ordered, the hand-gun holder bracket (#8) should be attached to the saddle strap as shown on the opposite side of the panel mounts. The strap is fastened as explained in step 3.



NOTE: Do not let any agricultural chemical stand in the applicator tanks when not in use. Chemicals left standing in equipment that is not in use shorten the life of tanks, pumps, hoses, etc. The longer chemicals stand, the more the water evaporates and the stronger the chemical solution becomes.

SINGLE SECTION PLUMBING FOR REAR MOUNT W/ ROLLER PUMP

NOTE: Use thread sealant on all threaded fittings.



SINGLE SECTION PARTS BREAKDOWN

ITEM	PART #	DESCRIPTION	QTY
1	00036	LOCKWASHER, 5/16"	2
2	00214	FLAT WASHER, 1/4"	4
3	01076	BOLT, 1/4" X 3/4" HEX HEAD	1
4	02772	NUT, 1/4" NYLON INSERT LOCK	4
5	02802	NUT, 5/16" NYLON INSERT LOCK	1
6	02990	BOLT, 5/16" X 1" HEX HEAD	1
7	04298-70	ROLLER PUMP MOUNTING BRACKET	1
8	04299	CHAIN & HOOK ASSEMBLY	1
9	04305	BOLT, 5/16" X 1/2" HEX HEAD	2
10	05596-95	TEE MOUNTING BRACKET	1
11	09319	8" LID	1
12	1010RB	RUBBER HOSE 1" ID PER FOOT	-
13	120RB	RUBBER HOSE 1/2" ID PER FOOT	-
14	1321 0013	PUMP COUPLER	1
15	160GB	GAUGE BRASS 160#	1
16	23340PP	VALVE, PRESSURE RELIEF 3/4"	1
17	340RB	RUBBER HOSE 3/4" ID PER FOOT	-
18	6B1	DIRECT-O-VALVE SINGLE SECTION	1
19	A3410	FTG, 3/4" MPT X 1" HOSE BARB	1
20	B12H	HOSE CLAMP 3/4"	8
21	B20H	HOSE CLAMP 1"	4
22	B8H	HOSE CLAMP 1/2"	2
23	BA1234	FTG, 1/2" MPT X 3/4" HOSE BARB	1
24	BA3434	FTG, 3/4" MPT X 3/4" HOSE BARB	1
25	BEL114 1	FTG, 1-1/4" MPT X 1" HOSE BARB ELBOW	1
26	BEL1212	FTG, 1/2" MPT X 1/2" HOSE BARB ELBOW	1
27	BEL3412	FTG, 3/4" X 1/2" HOSE BARB ELBOW	1
28	BEL3434	FTG, 3/4" MPT X 3/4" HOSE BARB ELBOW	3
29	BM3400	FTG, 3/4" MPT NIPPLE	3
30	BTT34	FTG, 3/4" FPT TEE	1
31	C7560	PUMP LESS COUPLER	1
32	D3371PSA	JET AGITATION	1
33	EL3410	FTG, 3/4" MPT X 1" HOSE BARB ELBOW	2
34	P114AV	1-1/4" TANK OUTLET FITTING	1
35	P150 32A	150 GALLON TANK (FITTINGS INCLD)	-
-	P200 32A	200 GALLON TANK (FITTINGS INCLD)	-
36	RVF34 80	LINE STRAINER 3/4" W/ 80 MESH SCREEN	1
-	RVF34C	CAP	-
-	RVF34GV	GASKET	-
-	RVF380	80 MESH SCREEN	-
-	RVF34B	BOWL	-
37	T34F	FTG, 3/4" FPT X 3/4" HOSE BARB (2) TEE	1
38	UV075FP	BALL VALVE 3/4" POLY	2
Please order replacement parts by PART NO. and DESCRIPTION			

JET AGITATION ASSEMBLY - D3371PSA

ITEM	PART #	DESCRIPTION	QTY
39	5044 1	AGITATOR JET	2
40	FC1200	COUPLING 1/2" FPT POLY	1
41	M1200	FTG, NIPPLE 1/2" MPT	1
42	P012DA	FTG, 1/2" TANK	1
43	R1212	FTG, 1/2" MPT TEE	1
Please order replacement parts by PART NO. and DESCRIPTION			

OPTIONAL HAND GUN - DBHGR

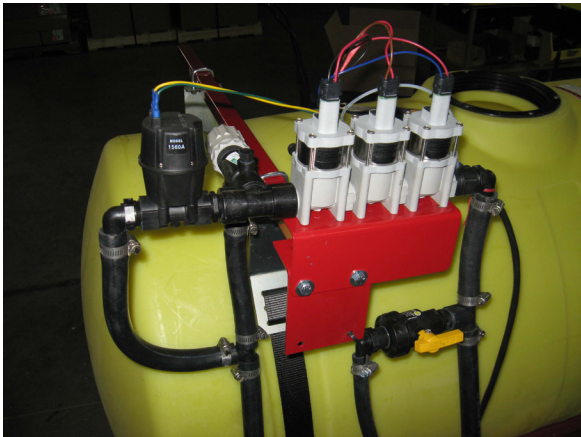
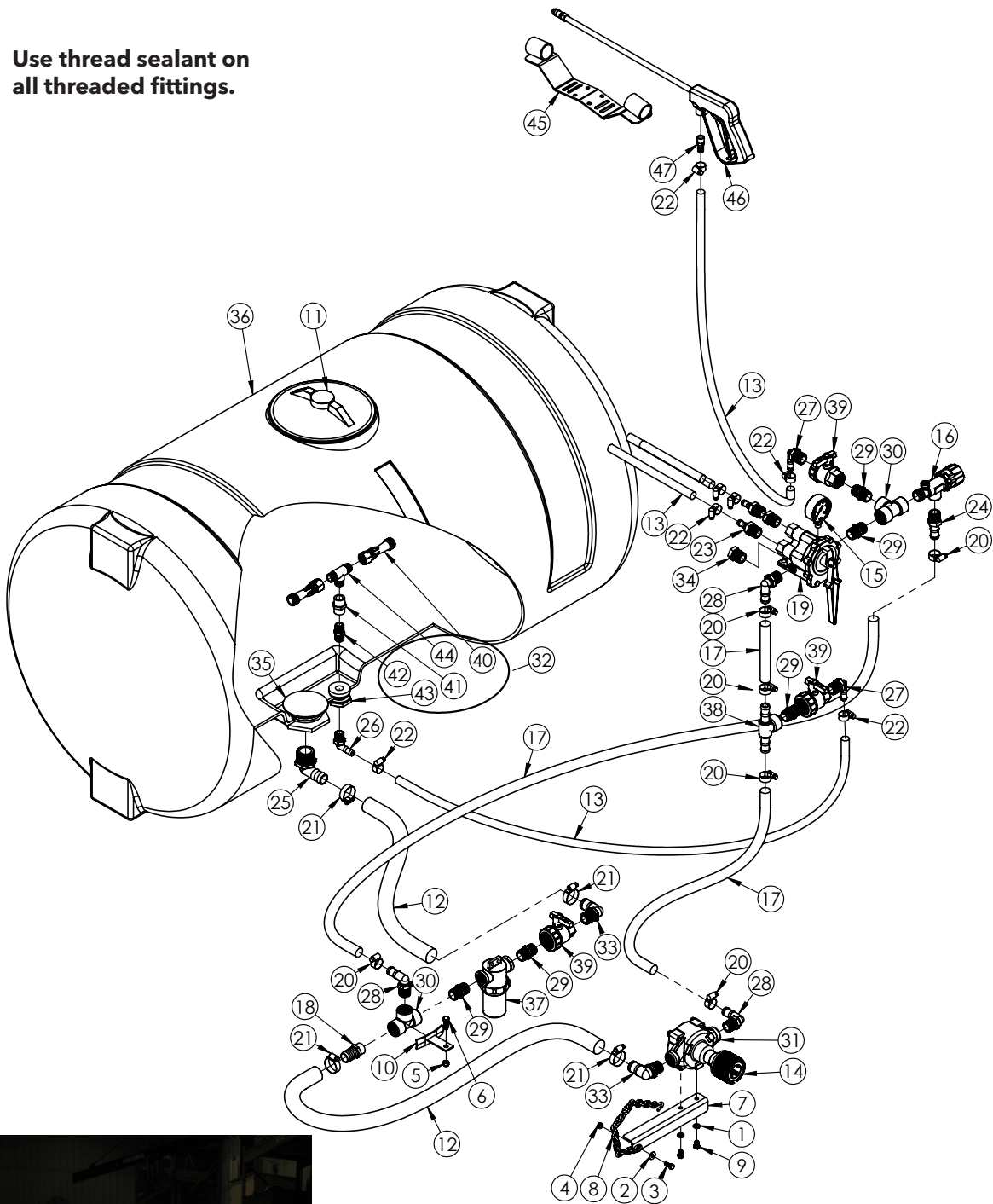
ITEM	PART #	DESCRIPTION	QTY
13	120RB	RUBBER HOSE 1/2" ID PER FOOT	-
22	B8H	CLAMP 1/2" HOSE	2
27	BEL3412	FTG, 3/4" X 1/2" HOSE BARB ELBOW	1
29	BM3400	FTG, 3/4" MPT NIPPLE	2
30	BTT34	FTG, 3/4" FPT TEE	1
38	UV075FP	BALL VALVE 3/4" POLY	1
44	05595-70	HAND GUN STORAGE BRACKET	1
45	12434	HAND SPRAY GUN	1
46	A3812	3/8" MPT X 1/2" HOSE BARB	1
Please order replacement parts by PART NO. and DESCRIPTION			

START UP INSTRUCTIONS

1. Open valves #16, #18, and (2) #38.
2. Fill tank with water.
3. Start tractor PTO to engage spray pump. When the pressure begins to build on the gauge, close valve #18.
4. Adjust valve #16 to approximately 10 PSI over your desired spraying pressure. Open boom valve #18 and make final pressure adjustment with valve #16.
5. If desired boom pressure cannot be reached, close agitation valve #38 until pressure is achieved.

THREE SECTION PLUMBING FOR REAR MOUNT W/ ROLLER PUMP

NOTE: Use thread sealant on all threaded fittings.



THREE SECTION PARTS BREAKDOWN

ITEM	PART #	DESCRIPTION	QTY
1	00036	LOCKWASHER, 5/16"	2
2	00214	FLAT WASHER, 1/4"	1
3	01076	BOLT, 1/4" X 3/4" HEX HEAD	1
4	02772	NUT, 1/4" NYLON INSERT LOCK	1
5	02802	NUT, 5/16 NYLON INSERT LOCK	1
6	02990	BOLT, 5/16" X 1" HEX HEAD	1
7	04298-70	ROLLER PUMP MOUNTING BRACKET	1
8	04299	CHAIN & HOOK ASSEMBLY	1
9	04305	BOLT, 5/16" X 1/2" HEX HEAD	2
10	05596-95	TEE MOUNTING BRACKET	1
11	09319	8" LID	1
12	1010RB	RUBBER HOSE 1" ID PER FOOT	-
13	120RB	RUBBER HOSE 1/2" ID PER FOOT	-
14	1321 0012	PUMP COUPLER	1
15	160GB	GAUGE BRASS 160#	1
16	23340PP	VALVE, PRESSURE RELIEF 3/4"	1
17	340RB	RUBBER HOSE 3/4" ID PER FOOT	-
18	A3410	FTG, 3/4" MPT X 1" HOSE BARB	1
19	AA17I	THREE SECTION TEE VALVE	1
20	B12H	HOSE CLAMP 3/4"	6
21	B20H	HOSE CLAMP 1"	4
22	B8H	HOSE CLAMP 1/2"	2
23	BA3412	FTG, 3/4" MPT X 1/2" HOSE BARB	3
24	BA3434	FTG, 3/4" MPT X 3/4" HOSE BARB	1
25	BEL114 1	FTG, 1-1/4" MPT X 1" HOSE BARB ELBOW	1
26	BEL1212	FTG, 1/2" MPT X 1/2" HOSE BARB ELBOW	1
27	BEL3412	FTG, 3/4" X 1/2" HOSE BARB ELBOW	1
28	BEL3434	FTG, 3/4" MPT X 3/4" HOSE BARB ELBOW	3
29	BM3400	FTG, 3/4" MPT NIPPLE	3
30	BTT34	FTG, 3/4" FPT TEE	1
31	C7560	PUMP LESS COUPLER	1
32	D3371P- SA	JET AGITATION	1
33	EL3410	FTG, 3/4" MPT X 1" HOSE BARB ELBOW	2
34	F3400	FTG, 3/4" MPT PLUG	1
35	P114AV	1-1/4" TANK OUTLET FITTING	1
36	P150 32A	150 GALLON TANK (FITTINGS INCLD)	-
-	P200 32A	200 GALLON TANK (FITTINGS INCLD)	-
37	RVF34 80	LINE STRAINER 3/4" W/ 80 MESH SCREEN	1
-	RVF34C	CAP	-
-	RVF34GV	GASKET	-
-	RVF380	80 MESH SCREEN	-
-	RVF34B	BOWL	-
38	T34F	FTG, 3/4" FPT X 3/4" HOSE BARB (2) TEE	1
39	UV075FP	BALL VALVE 3/4" POLY	2
Please order replacement parts by PART NO. and DESCRIPTION			

JET AGITATION ASSEMBLY - D3371PSA

ITEM	PART #	DESCRIPTION	QTY
40	5044 1	AGITATOR JET	2
41	FC1200	COUPLING 1/2" FPT POLY	1
42	M1200	FTG, NIPPLE 1/2" MPT	1
43	P012DA	FTG, 1/2" TANK	1
44	R1212	FTG, 1/2" MPT TEE	1
Please order replacement parts by PART NO. and DESCRIPTION			

OPTIONAL HAND GUN - DBHGR

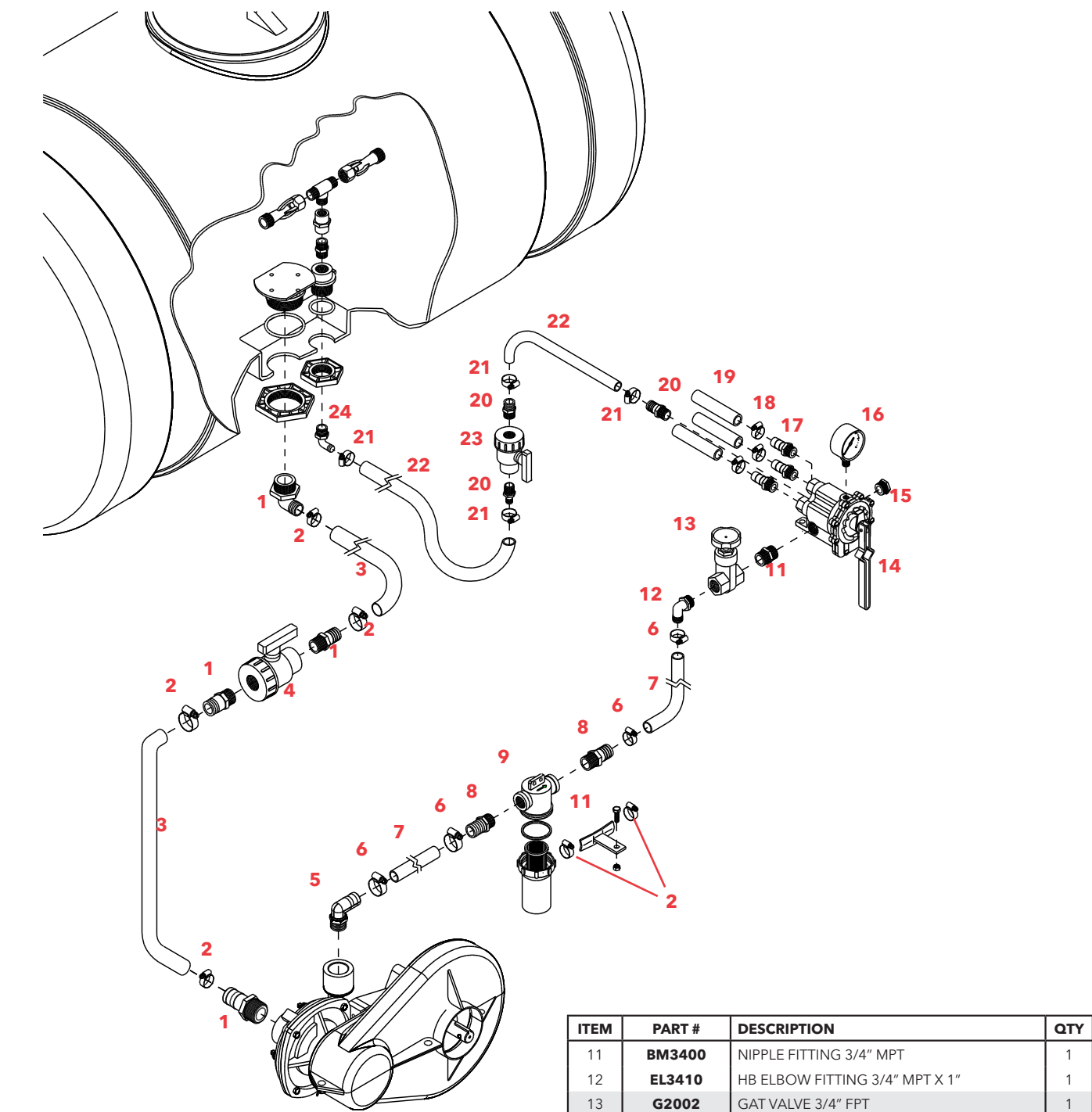
ITEM	PART #	DESCRIPTION	QTY
13	120RB	RUBBER HOSE 1/2" ID PER FOOT	-
22	B8H	HOSE CLAMP 1/2"	2
27	BEL3412	FTG, 3/4" MPT X 1/2" HOSE BARB ELBOW	1
29	BM3400	FTG, 3/4" MPT NIPPLE	2
30	BTT34	FTG, 3/4" FPT TEE	1
39	UV075FP	BALL VALVE 3/4" POLY	1
45	05595-70	HAND GUN STORAGE BRACKET	1
46	12434	HAND SPRAY GUN	1
47	A3812	3/8" MPT X 1/2" HOSE BARB	1
Please order replacement parts by PART NO. and DESCRIPTION			

START UP INSTRUCTIONS

1. Open valves #16, #19, and (2) #39.
2. Fill tank with water.
3. Start tractor PTO to engage spray pump. When the pressure begins to build on the gauge, close valve #19.
4. Adjust valve #16 to approximately 10 PSI over your desired spraying pressure. Open boom valve #19 and make final pressure adjustment with valve #16.
5. If desired boom pressure cannot be reached, close agitation valve #39 until pressure is achieved.

PLUMBING & PARTS BREAKDOWN

CENTRIFUGAL PUMP PLUMBING PARTS BREAKDOWN FOR 150-200 GALLON REAR MOUNT



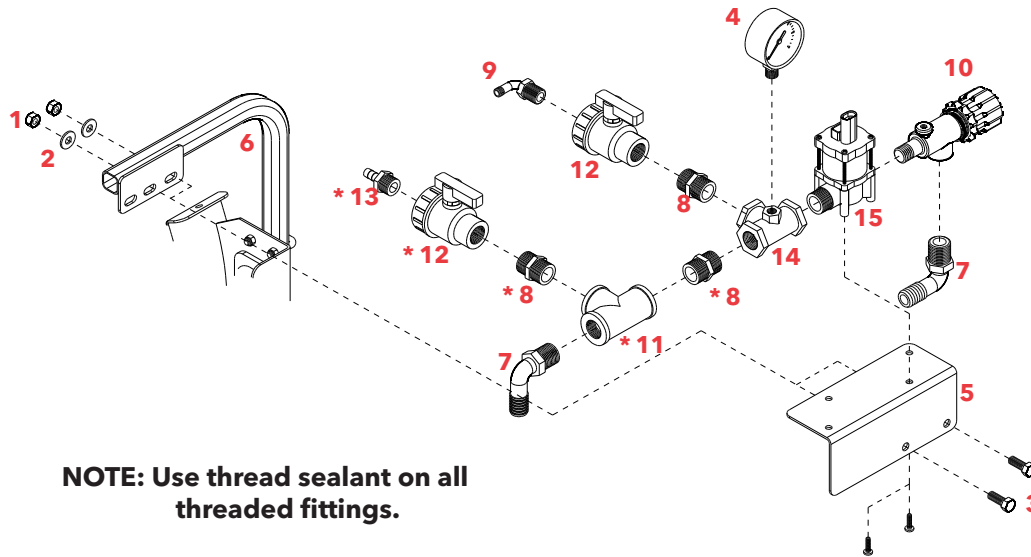
ITEM	PART #	DESCRIPTION	QTY
1	BA114	HB FITTING, 1-1/4" MPT X 1-1/4"	3
2	B24H	GEAR HOSE CLAMP 1-1/4" SS	6
3	1140RB	RUBBER HOSE 1-1/4" ID	-
4	UV125FP	POLY BALL VALVE 1-1/4"	1
5	BEL1010	HB ELBOW FITTING 1" MPT X 1"	1
6	B164	GEAR HOSE CLAMP 1" SS	4
7	1010RB	RUBBER HOSE 1" ID	-
8	A3410	HB STRAIGHT FITTING 3/4" MPT X 1"	2
9	RVF34 80	LINE STRAINER W/80 MESH SCREEN 3/4"	1
10	05596-95	PLUMBING MOUNTING HANGER PLATED	1

Please order replacement parts by PART NO. and DESCRIPTION

ITEM	PART #	DESCRIPTION	QTY
11	BM3400	NIPPLE FITTING 3/4" MPT	1
12	EL3410	HB ELBOW FITTING 3/4" MPT X 1"	1
13	G2002	GAT VALVE 3/4" FPT	1
14	AA171	3-SECTION TEE VALVE W/ 3/4" FPT OUTLETS	1
15	F3400	PLUG FITTING 3/4" MPT	1
16	160GB	160 LB. BRASS GAUGE	1
17	BA3434	HB STRAIGHT FITTING 3/4" MPT X 3/4"	3
18	B12H	GEAR HOSE CLAMP 3/4" SS	3
19	340RB	RUBBER HOSE 3/4" ID	-
20	BA3412	HB STRAIGHT FITTING 3/4" MPT X 1/2"	3
21	B8H	GEAR HOSE CLAMP 1/2" SS	4
22	120RB	RUBBER HOSE 1/2" ID	-
23	UV075FP	POLY BALL VALVE 3/4"	1
24	BEL1212	HB ELBOW FITTING 1/2" MPT X 1/2"	1

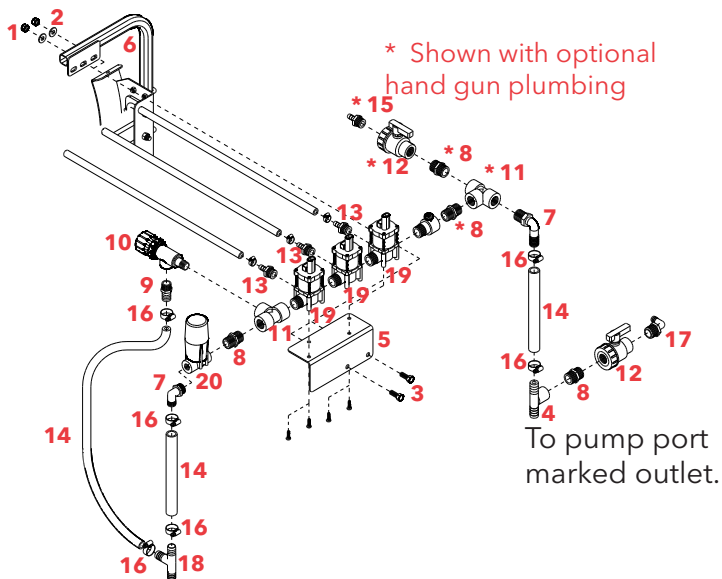
Please order replacement parts by PART NO. and DESCRIPTION

OPTIONAL SINGLE SECTION ELECTRIC SOLENOID



NOTE: Use thread sealant on all threaded fittings.

OPTIONAL THREE SECTION ELECTRIC SOLENOID



To tee in suction hose **NOTE: Use thread sealant on all threaded fittings.**
(#30 see page 14)

ITEM	PART #	DESCRIPTION	QTY
1	02592	LOCKNUT, 3/8" NYLON INSERT	2
2	00059	FLATWASHER, 3/8"	2
3	00907	BOLT, 3/8"NC X 1" GR.5 HEX HEAD	2
4	160GB	160 LB. BRASS PRESSURE GAUGE	1
5	11633-70	ELECTRIC CONTROL MOUNT	1
6	05773-70	RIGHT BOOM MOUNT	1
7	BEL3434	HOSE BARB ELBOW (GFP) 3/4" MPT X 3/4"	2
8	BM3400	NIPPLE (GFP) 3/4" MPT	3
9	BEL3412	HOSE BARB ELBOW (GFP) 3/4" MPT X 1/2"	1
10	23340PP	PISTON STYLE PRESS REL. VALVE 3/4" NPT	1
11	BTT34	TEE 3/4" FPT	2
12	UVO75FP	POLY BALL VALVE 3/4"	2
13	BA3412	HOSE BARB 3/4" MPT X 1/2"	1
14	BTT34G	TEE W/ GAUGE PORT 3/4" FPT	1
15	11635	ELECTRIC SOLENOID VALVE W/ SCREWS	1
16	11640	WIRING HARNESS F/ ELECTRIC SOLENOID (NOT SHOWN)	1

Please order replacement parts by PART NO. and DESCRIPTION

ITEM	PART #	DESCRIPTION	QTY
1	02592	LOCKNUT, 3/8" NYLON INSERT	2
2	00059	FLATWASHER, 3/8"	2
3	00907	BOLT, 3/8"NC X 1" GR.5 HEX HEAD	2
4	T34F	3/4" FPT TEE X 3/4"	1
5	11633-70	ELECTRIC CONTROL MOUNT	1
6	05773-70	RIGHT BOOM MOUNT	1
7	BEL3434	HOSE BARB ELBOW (GFP) 3/4" MPT X 3/4"	2
8	BM3400	NIPPLE (GFP) 3/4" MPT	4
9	BA3434	HOSE BARB 3/4" MPT X 3/4"	1
10	23340PP	PISTON STYLE PRESS REL. VALVE 3/4" NPT	1
11	BTT34	TEE 3/4" FPT	2
12	UVO75FP	POLY BALL VALVE 3/4"	2

Please order replacement parts by PART NO. and DESCRIPTION

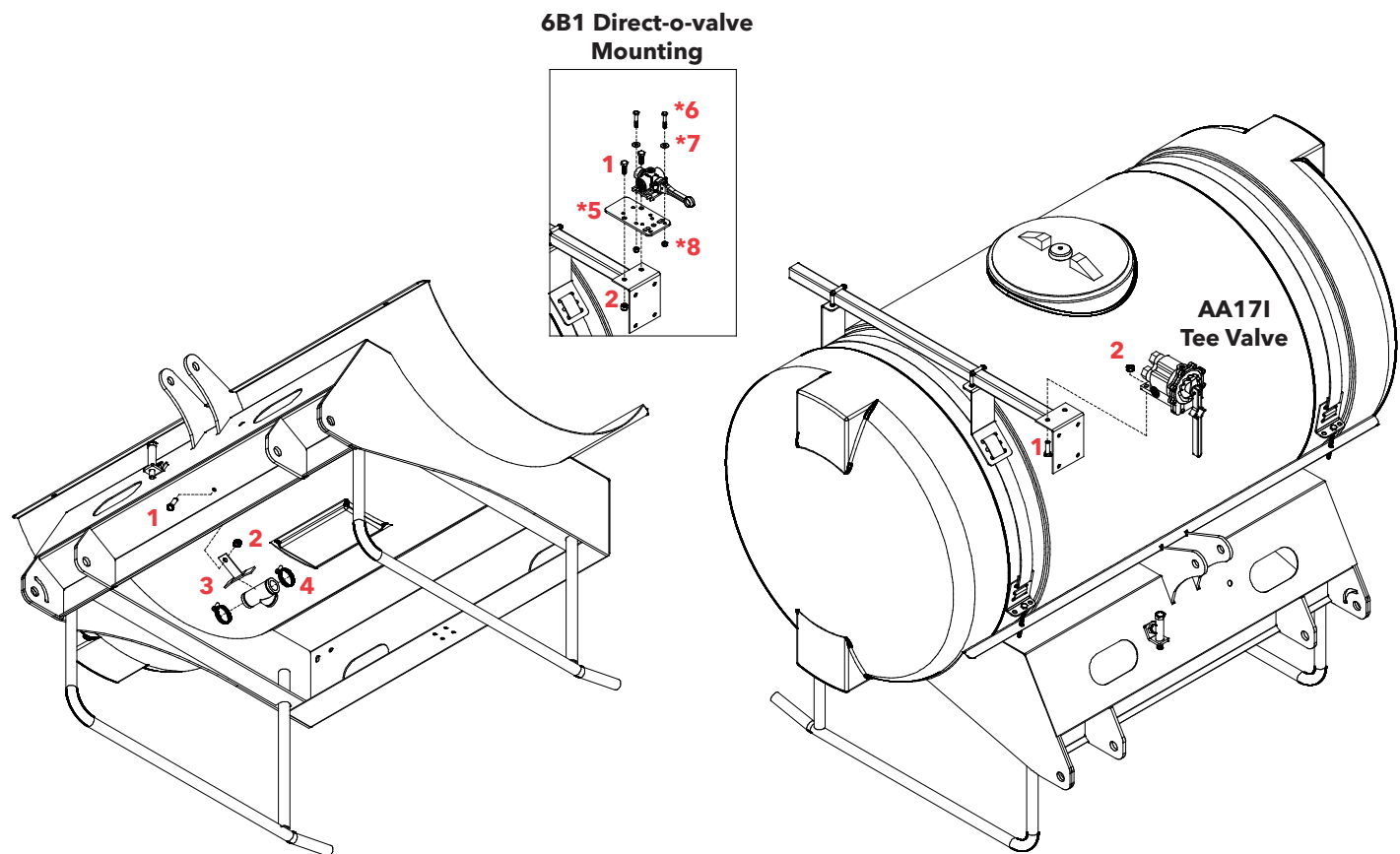
ITEM	PART #	DESCRIPTION	QTY
13	BA1234	HOSE BARB (GFP) 1/2" MPT X 3/4"	3
14	340RB	RUBBER HOSE 3/4" ID	-
15	BA3412	HOSE BARB 3/4" MPT X 1/2"	1
16	B12H	GEAR CLAMP 3/4"	6
17	BEL3412	HOSE BARB (GFP) 3/4" MPT X 1/2"	1
18	T34	TEE 3/4" FPT	1

Please order replacement parts by PART NO. and DESCRIPTION

ITEM	PART #	DESCRIPTION	QTY
-	5747	3 SECTION CONSOLE W/ HARNESS, GAUGES & SCREWS	-
19	11635	ELECTRIC SOLENOID VALVE	3
20	01057	REGULATOR VALVE	1

Please order replacement parts by PART NO. and DESCRIPTION

REAR MOUNT TEE VALVE MOUNTING



ASSEMBLY INSTRUCTIONS

1. Bolt the Tee Valve to the control mount as shown with two 5/16" x 1" bolts (#1) and 5/16" nylon locknuts (#2) provided.

When mounting a 6B1 Direct-o-valve mount valve to the valve mounting bracket (#5) using four 1/4" x 1" hex head bolts (#6), four 1/4" flatwashers (#7), and four 1/4" nylon locknuts (#8) Now mount the valve/valve bracket assembly to the control mount as shown using two 5/16" x 1" bolts (#1) and 5/16" nylon locknuts (#2) provided.

NOTE: The tee valve (AA171) is standard when the rear mount is ordered with three section control for spray boom. A directo valve (6B1) is standard when the rear mount is ordered with single control for a spray kit. The directo valve attaches to a bracket and that bracket attaches to one of the same holes in the control mount as does the tee valve (see illustration above.)

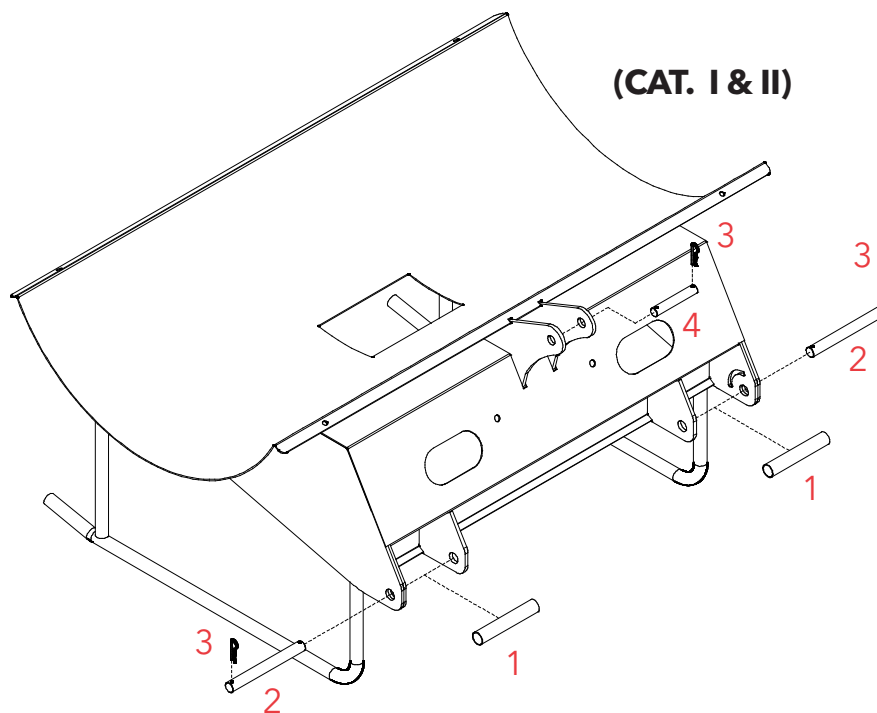
2. The tee mounting bracket (#3) is attached to the rear mount frame as shown using one 5/16" x 1" hex head bolt (#1) and 5/16" nylon locknut (#2). The Plumbing tee is attached using two 1-1/4" hose clamps (#4).

ITEM	PART #	DESCRIPTION	QTY
1	02990	BOLT, 5/16" X 1" HEX HEAD	2
2	02802	LOCKNUT, 5/16" NYLON INSERT	2
3	05596-95	TEE MOUNTING BRACKET	1
4	B24H	HOSE CLAMP 1-1/4"	2
*5	05034-95	6B1 VALVE MOUNTING BRACKET	1
*6	00093	BOLT, 1/4"-20 UNC X 1" HEX HEAD	4
*7	00214	FLATWASHER, 1/4"	4
*8	02772	LOCKNUT, 1/4"-20 UNC NYLON INSERT	4

Please order replacement parts by PART NO. and DESCRIPTION

* Items used when mounting the 6B1 Directo valve only.

ATTACHING THE REAR MOUNT TO THE TRACTOR'S THREE POINT

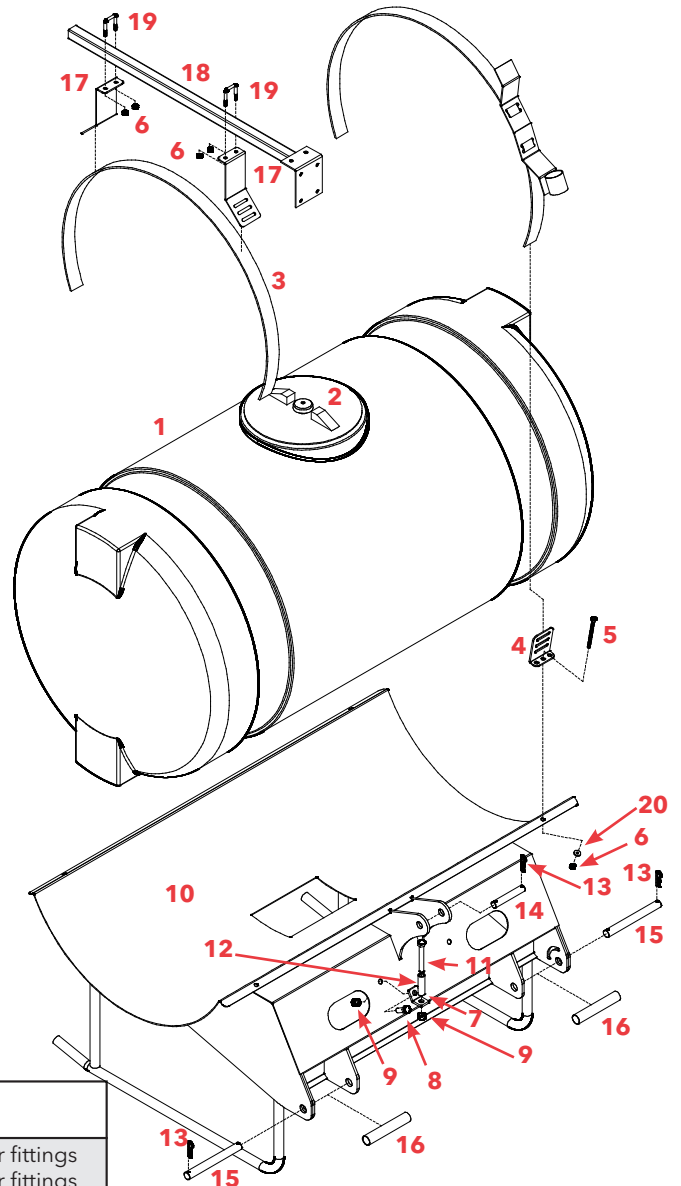


1. Begin by inserting the spacers **(#1)** through the tractor's three point lift arm swivels.
2. Connect the assembly to the tractor's lift arms by inserting the 7/8" diameter lift pins **(#2)** through the rear mounts side mounting arms and the lift arm swivels.
3. Insert the 3/16" hairpins **(#3)** provided through both ends of the lift pins.
4. Connect the tractor's three point stabilizer arm to the center mounting arm in the same manner as the lift arms using the 3/16" hairpins **(#3)** and the 3/4" diameter lift pin **(#4)**.

Note: Be sure to adjust upper arm properly or damage will result to frame.

PARTS BREAKDOWN

REAR MOUNT 150 & 200 GALLON PARTS BREAKDOWN

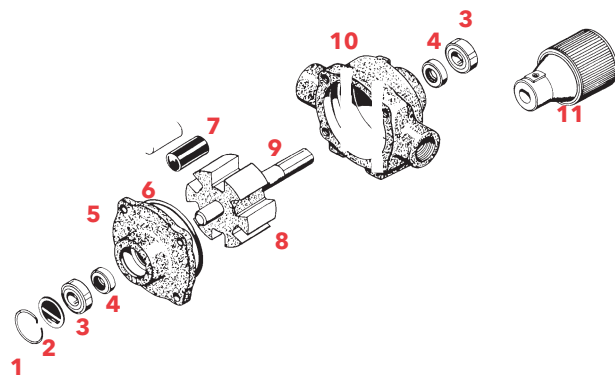


REF. NO.	PART NO.	QTY.	DESCRIPTION
1.	P150 32A	1	150 gallon Poly Tank w/ lid, agitation and outer fittings
1.	P200 32A	1	200 gallon Poly Tank w/ lid, agitation and outer fittings
2.	09319	-	8" dia. Fillwell Cover (replacement)

3.	5317	1	64" Strap Assembly (consists of two straps and hdw.)
-	09821	2	64" Polyester Strap only (black)
4.	05785-95	4	"L" Bracket for polyester strap (plated)
5.	04352	4	5/16"-18 UNC x 4" Full Thread Hex Head Bolt
6.	02802	4	5/16"-18 UNC Nylon Insert Locknut
20.	00004	4	5/16" Flatwasher

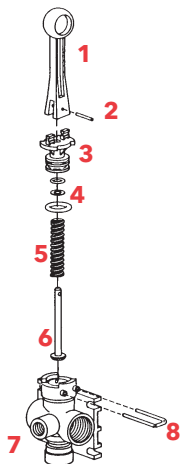
6.	02802	4	5/16"-18 UNC Nylon Insert Locknut
7.	11183-95	1	Pump Mount Bracket (plated)
8.	00967	1	1/2"-13 UNC x 1-1/4" Hex Head Bolt
9.	02178	2	1/2"-13 UNC Nylon Insert Locknut
10.	11107-10	1	Rear Mount Frame (150 gallon) (red)
-	11108-10	1	Rear Mount Frame (200 gallon) [shown] (red)
11.	01897	1	1/2"-13 UNC x 3-1/2" Hex Head Bolt
12.	05379-95	1	3/4" O.D. x 1/2" I.D. x 2-7/16" Bushing (plated)
13.	00006	6	.148" Hairpin (#9)
14.	01123-95	1	3/4" dia. x 4-1/2" lg. Pin (plated)
15.	01121-95	2	7/8" dia. x 8" lg. Pin (plated)
16.	01122-95	2	1" I.D. x 6-1/4" Spacer (plated)
17.	11176-95	2	Panel Mount Bracket (plated)
18.	05391-10	1	Panel Mount Stem (red)
19.	00909	2	5/16"-18 UNC x 1 3/8" Square U-Bolt

Please order replacement parts by **PART NO.** and **DESCRIPTION.**

(C7560D OR XL7560D) PTO DRIVEN ROLLER PUMP PARTS LIST

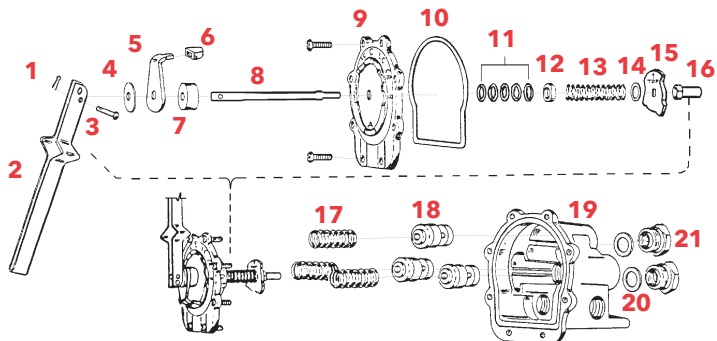
REF. NO.	PART NO.	QTY	DESCRIPTION
			Hypro Pump with 540 RPM Quick Coupler
1	1800 0003	1	Retainer Ring
2	0600	1	Name Plate (specify pump model no.)
3	2008 0001	2	Ball Bearing (sealed)
*4	2112 0003	2	Viton Seal (standard)
5	0204 7500C	1	End Plate (includes Seal#4)
-	0204 7500X	1	End Plate (includes Seal#4)(XL7560D)
*6	1720 0014	1	O-ring for End Plate
*7	1005 0004	8	Roller
8	0308 7560C	1	Rotor with Shaft
-	0308 7560X	1	Rotor and Shaft (XL7560D)
9	0550 7400	1	Shaft Only
-	1610 0005	1	Spline Key
10	0104 7500C	1	Body (includes Seal#4)
-	0104 7560X	1	Body (includes Seal#4)(XL7560D)
11	1321 0013	1	Quick Coupler Adapter-Multi Speed
	3430 0167		Parts Kit (includes items with *)

Please order replacement parts by **PART NO.** and **DESCRIPTION.**

(6B1) DIRECT-O-VALVE PARTS BREAKDOWN

REF. NO.	PART NO.	DESCRIPTION
1.	36301NY	Handle (Nylon)
*2.	36308SS	Groove Pin (Stainless Steel)
3.	36302PP	Body Insert (Polypropylene)
4.	36307SS	Washer (Type 316, Stainless Steel)
5.	36306SS	Spring (Type 316, Stainless Steel)
*6.	36305	Stem (Stainless Steel & Polyethylene)
7.	36303PP	Body (Polypropylene)
8.	36309SS	Retaining Clip (Stainless Steel)
AB6B 1 Spare Parts Kit (includes items with *)		

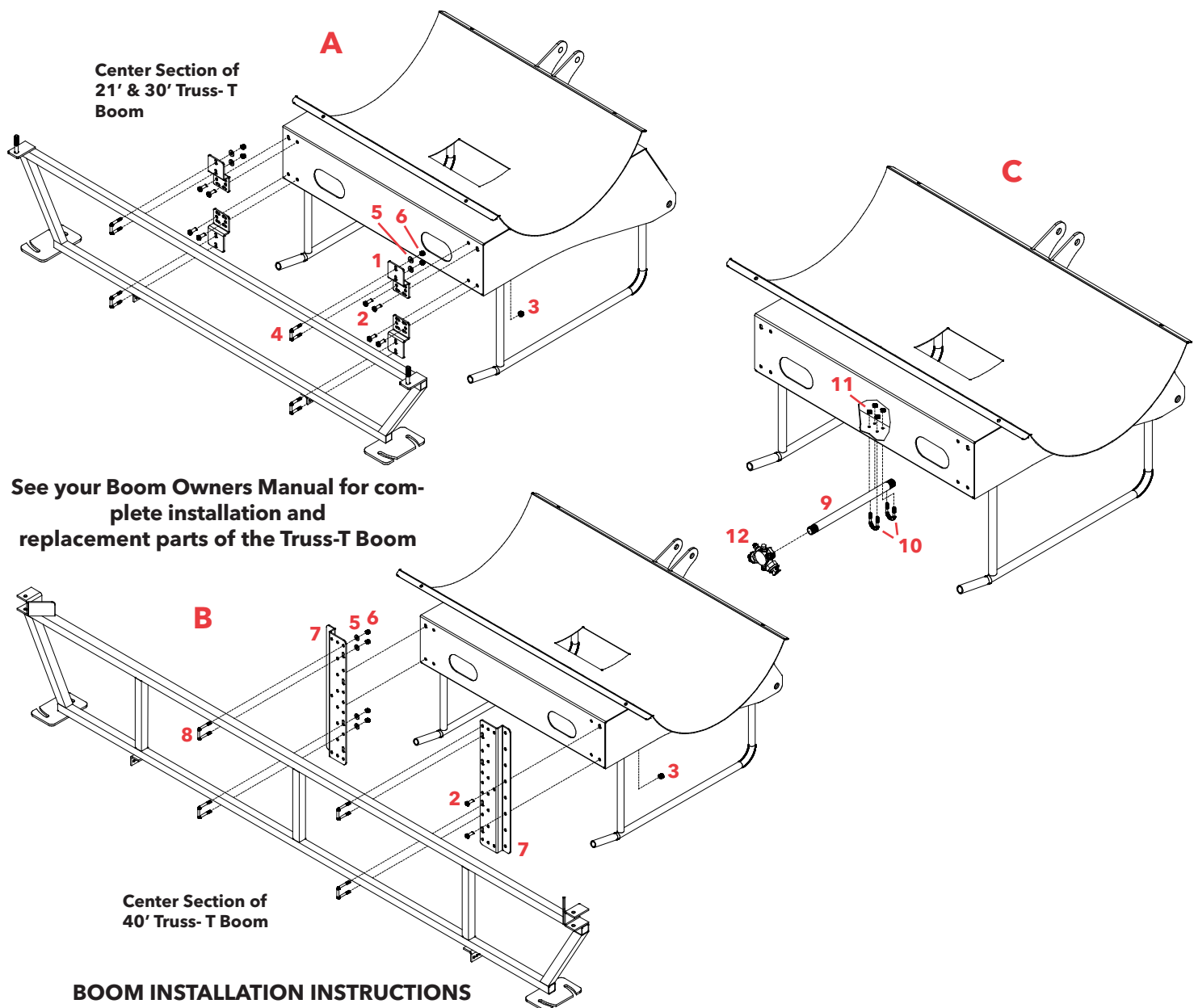
Please order replacement parts by **PART NO.** and **DESCRIPTION.**

(AA17I) TEE VALVE PARTS BREAKDOWN

REF. NO.	PART NO.	DESCRIPTION
1	8012 1/2SS	1/16" x 1/2" Cttter Pin, stainless steel
2	6849IZP	Handle, steel & zinc plated
2.A	15490SS	Rivet, stainless steel
*3	7206IZP	Rivet, steel, zinc plated
*4	6976IZP	Handle Washer, steel, zinc plated
5	12128IZP	Selector Shield, steel, zinc plated
*6	12127CE	Selector Shield Tip, celcon
7	12129CE	Spacer, celcon
8	6972SS	Main Stem, stainless steel
9	12126AL	Cover Plate, aluminum
*10	6975BU	Gasket, buna-N
*11	5809LEA	Packing, thermo-leather (5 required)
12	12130SS	Parking Gland, stainless Steel
13	7254SS	Main Spring, stainless steel
14	7987SS	Washer, stainless steel
15	6971AL	Selector Cam, aluminum
16	6973SS	Guide Nut, stainless steel
17	6959SS	Valve Spring, stainless steel (3 req'd.)
18	6956CE	Valve Stem, celcon (3 required)
19	6934 6AL	Body aluminum
*20	6958POL	Seat Plate, polyethylene (3 required)
21	7262AL	Outer Adapters, aluminum
	AB17	Spare Parts Kit (includes items with *)

Please order replacement parts by **PART NO.** and **DESCRIPTION.**

DB1 BOOM MOUNTING BRACKETS INSTALLATION



BOOM INSTALLATION INSTRUCTIONS

- A. 21' & 30' Boom:** Attach boom mount angles (#1) to rear of frame using four 3/8" x 1" hex head bolts (#2) and four 3/8" locknuts (#3). Attach boom center section to boom mount angles using four 5/16" x 1 1/4" square u-bolts (#4), eight 5/16" flatwashers (#5), and eight 5/16" locknuts (#6).
- B. 40' Boom:** Attach boom mount angles (#7) to rear of frame using four 3/8" x 1" hex head bolts (#2) and four 3/8" locknuts (#3). Attach boom center section to boom mount angles using four 5/16" x 1 1/2" square u-bolts (#8), eight 5/16" flatwashers (#5), and eight 5/16" locknuts (#5).
- C. Boomless Nozzle:** Attach BoomJet Tube (#9) to rear of frame using two 1/4" round U-bolts (#10) and four 1/4" nylon locknuts (#11).

ITEM	PART #	DESCRIPTION
1	02678-95	MOUNTING PLATE SPOT SPRAYER BOOM
2	00907	BOLT, 3/8" NC X 1" HEX GR.5
3	02592	NUT 3/8" NC LOCK NYLON INSERT
4	00909	U-BOLT SQ 5/16" NC X 1-3/8" X 1-7/8" 1" MINIMUM THREAD
5	00004	WASHER FLAT 5/16" v96
6	02802	NUT 5/16" NC LOCK NYLON INSERT
7	03275-76	BOOM MOUNTING PLATE
8	05678	U-BOLT SQ 5/16" X 1-1/2" X 2-1/4"
9	07459	BOOMJET TUBE (GALVANIZED)
10	00955	U-BOLT, ROUND 1/4" X 1" X 2"
11	02772	LOCKNUT 1/4" NYLON INSERT
12	SEE CATALOG	BOOMJET NOZZLE (SOLD SEPARATELY)
Please order replacement parts by PART NO. and DESCRIPTION		

SPRAYER CHECKLIST:

Downtime caused by breakdowns is costly and time consuming. Many breakdowns can be eliminated by periodic equipment maintenance. By spending a little time running over this checklist before seasonal spraying application time and following proper after-season care, you can save time and money later on.



WARNING: To Prevent Serious Injury Or Death

- Keep hands, feet, and loose clothing away from rotating parts.
- Wear the protective clothing recommended by your chemical and fertilizer manufacturer when working with chemicals.

Check Before Going To The Field :

1. NOZZLES

Check the tip for excessive wear by checking for grooves in or near the tip opening. Check the nozzle spacing by starting at center and working outwards. Check boom for proper height.

2. HOSES

Check all hoses for worn or soft spots. Be sure all hose clamps are tightened and hoses are not kinked or pinched. Check for leakage in any of the lines.

3. TANK

Remove and clean the agitator orifices. Check the orifices for excessive wear by checking for grooves in or near the orifice opening. Inspect the fitting and grommets to ensure they are in good condition.

4. CONTROLS

Check for leakage, plugging, or wear on all valves, fittings, etc. Clean off any buildup of foreign material.

5. PUMP

Check to be sure the pump turns freely.

6. FRAME

Be sure all bolts are tightened.

7. REPLACEMENT PARTS

Replace all worn or damaged parts.

After Season Care:

NOTE: It is important that when cleaning the sprayer one wears proper safety equipment. See your chemical or fertilizer package for this information.

1. After spraying chemicals, run water mixed with cleaners through the tank, pump and all hose hookups. If wettable powder dries out in the system, it is very difficult to put back into suspension and can cause malfunction, damage or injury.
2. The tank, when cleaned, should have all openings closed or covered to keep dirt from blowing in.
3. The pump should be flushed with soluble oil and the pump ports plugged to keep out moisture and air.
4. Disassemble the tips and rinse with water or cleaning solution. (Appropriate for chemical sprayed.)
5. Clean the tip opening with a wooden toothpick. Never use wire or a hard object that could distort the opening.
6. Be sure to dispose of all unused chemicals or solutions in a proper and ecologically sound manner.
7. Water rinse and dry the tips before storing.

NOTE: DEMCO does not and will not make any recommendations concerning the application of various chemicals or solutions. These recommendations relate to either amount or procedure of materials applied. If you have any questions regarding the application of certain chemicals or solutions, contact your chemical supplier and follow chemical manufacturer recommendations as well as all licensing and use restrictions or regulations.



4010 320th St., Boyden, IA. 51234

Phone: (712) 725-2311

Fax: (712) 725-2380

Toll Free: 1-800-54DEMCO (1-800-543-3626)

**Demco warranty policies, operator manuals, and product registration
can be found online:**

www.demco-products.com